

Conveyor chains

JWTS[®] Conveyor chains

iwis conveyor chains can especially be matched with the demands of customer applications. iwis does not only supply the customer with a wide range of special straight attachments and bent attachment plates, but the Technical Service Team offers solutions for individual customer demands and designs custom-made products.

iwis conveyor chains offer the user the benefits of parallel and synchronous running, extremely precise positioning, quiet running and a significantly higher breaking resistance than the norm. Also available: conveyor chains with extended bearing pins, conveyor chains with U-shaped attachments and multiple strand connecting links.



IWIS® Conveyor chains with straight attachment plates

for fitting to iwis chains DIN 8187, 8188 and 8181

Conveyor chains

DIN ISO no.	Ref. no. iwis	Pitch ²⁾		a (mm)	b (mm)	d (mm)	Single strand chains e ₁ (mm)	Double strand chains e ₂ (mm)	Triple strand chains e ₃ (mm)	g (mm)	i (mm)	l (mm)	s (mm)	M (mm)	Threaded insert m. max (mm)
		P (")	P (mm)												
Plate No. 102.1															
-	P 83 V	1/2"	12,7	13,0	19,0	4,2	8,1	-	-	4,5	-	18,0	1,5	-	-
-	S 84 V	1/2"	12,7	13,0	19,0	4,2	9,8	-	-	4,5	-	18,0	1,5	-	-
08 B-1	L 85 SL ¹⁾	1/2"	12,7	13,0	19,0	4,2	11,6	25,5	39,4	5,4	-	18,0	1,5	4	5,2
10 B-1	M 106 SL ¹⁾	5/8"	15,875	16,3	24,3	5,2	13,6	30,1	46,6	6,8	-	24,0	1,6	5	5,3
12 B-1	M 127 SL ¹⁾	3/4"	19,05	19,1	29,1	6,2	15,9	35,3	54,7	7,4	-	28,0	1,8	5	5,5
16 B-1	M 1611 ¹⁾	1"	25,4	24,6	36,6	8,2	25,9	57,8	89,7	10,4	-	36,2	3,0	6	8,2
08 A-1 ANSI 40	L 85 A ¹⁾	1/2"	12,7	13,0	19,0	4,2	11,4	25,8	40,2	4,5	-	18,0	1,5	-	-
10 A-1 ANSI 50	M 106 A ¹⁾	5/8"	15,875	16,3	24,3	5,2	14,1	32,3	50,4	6,8	-	24,0	1,6	-	-
12 A-1 ANSI 60	M 128 A SL ¹⁾	3/4"	19,05	19,1	29,1	6,2	18,1	40,8	63,6	7,4	-	28,0	2,4	-	-
16 A-1 ANSI 80	M 1610 A ¹⁾	1"	25,4	24,6	36,6	8,2	23,0	52,2	81,5	10,4	-	36,2	3,0	-	-
Plate No. 103.1 and 103.2															
-	P 83 V ²⁾	1/2"	12,7	17,0	23,0	4,2	8,1	-	-	4,5	12,7	23,6	1,5	-	-
-	S 84 V	1/2"	12,7	17,0	23,0	4,2	9,8	-	-	4,5	12,7	23,6	1,5	-	-
08 B-1	L 85 SL ¹⁾	1/2"	12,7	17,0	23,0	4,2	11,6	25,5	39,4	5,4	12,7	23,6	1,5	4	5,2
10 B-1	M 106 SL ¹⁾	5/8"	15,875	16,3	25,8	5,2	13,6	30,1	46,6	7,5	15,8	31,0	1,6	5	5,3
12 B-1	M 127 SL ¹⁾	3/4"	19,05	18,3	29,0	6,2	15,9	35,3	54,7	9,0	19,0	37,2	1,8	5	5,5
16 B-1	M 1611 ¹⁾	1"	25,4	28,45	41,55	8,2	25,9	57,8	89,7	10,35	25,4	47,2	3,0	6	8,2
08 A-1 ANSI 40	L 85 A ¹⁾	1/2"	12,7	17,0	23,0	4,2	11,4	25,8	40,2	4,5	12,7	23,6	1,5	-	-
10 A-1 ANSI 50	M 106 A ¹⁾	5/8"	15,875	16,3	25,8	5,2	14,1	32,3	50,4	7,5	15,8	31,0	1,6	-	-
12 A-1 ANSI 60	M 128 A SL ¹⁾	3/4"	19,05	18,3	29,0	6,2	18,1	40,8	63,6	9,0	19,0	37,2	2,4	-	-
16 A-1 ANSI 80	M 1610 A ¹⁾	1"	25,4	28,45	41,55	8,2	23,0	52,2	81,5	10,35	25,4	47,2	3,0	-	-
Plate No. 101.1 and 101.2															
208 B	LR 165 SL	1"	25,4	14,3	20,5	4,2	11,6	-	-	6,5	14,0	24,2	1,5	-	-
210 B	LR 206 SL	1 1/4"	31,75	16,3	25,8	5,2	13,8	-	-	7,5	18,0	30,2	1,6	-	-
212 B	LR 247 S	1 1/2"	38,1	19,2	29,5	6,2	15,9	-	-	9,0	20,0	36,2	1,7	-	-
216 B	LR 3211	2"	50,8	28,5	40,6	8,2	25,9	-	-	10,2	28,0	48,2	3,0	-	-

¹⁾ Available for both double and triple strand chains ²⁾ Nominal pitch

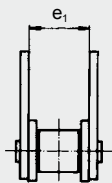
IWIS® Conveyor chains with straight attachment plates for fitting to iwis chains DIN 8187, 8188 and 8181

STRAIGHT ATTACHMENT PLATES

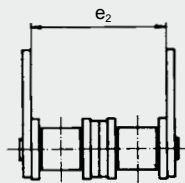
The designs shown below can be supplied as connecting links, or outer links for end

fitting or repair. Further threaded inserts can also be supplied. Details on request.

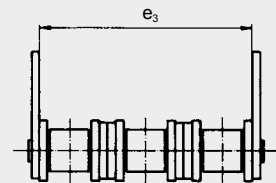
Single



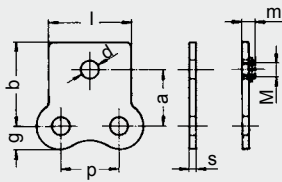
Double



Triple

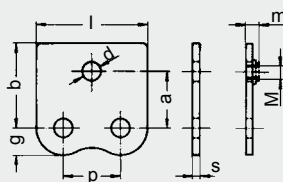


102.1

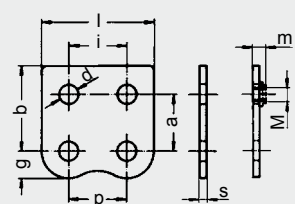


102.31 with threaded insert

103.1

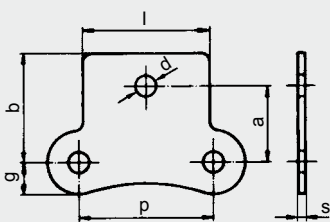


103.2

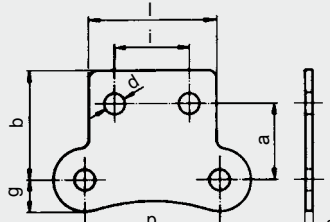


103.32 with threaded insert

101.1 for double-pitch chains



101.2 for double-pitch chains



IWIS® Conveyor chains with bent attachment plates

for fitting to iwis chains DIN 8187, 8188 and 8181

Conveyor chains

DIN ISO no.	Ref. no. iwis	Pitch				Single chains			Double chains			Triple chains			Threaded insert			
		p (Zoll)	p (mm)	c (mm)	d (mm)	e ₁ (mm)	f ₁ (mm)	e ₂ (mm)	f ₂ (mm)	e ₃ (mm)	f ₃ (mm)	g (mm)	h (mm)	i (mm)	l (mm)	s (mm)	M (mm)	m max. (mm)
Form 202.1																		
-	P 83 V	1/2"	12,7	8,0	4,2	24,1	36,1	-	-	-	-	4,5	14,0	-	18,1	1,5	-	-
-	S 84 V	1/2"	12,7	8,0	4,2	25,8	37,8	-	-	-	-	4,5	14,0	-	18,1	1,5	-	-
08 B-1	L 85 SL ¹⁾	1/2"	12,7	8,0	4,2	27,6	39,6	41,5	53,5	55,4	67,4	5,4	14,0	-	18,1	1,5	4	5,2
10 B-1	M 106 SL ¹⁾	5/8"	15,875	9,0	5,2	33,6	49,6	50,1	66,1	66,6	82,6	6,8	18,0	-	24,0	1,6	5	5,3
12 B-1	M 127 SL ¹⁾	3/4"	19,05	10,0	6,2	41,1	61,1	60,5	80,5	79,9	99,9	7,4	22,6	-	28,0	1,8	5	5,5
16 B-1	M 1611 ^{1) 2)}	1"	25,4	16,0	8,2	53,9	77,9	85,8	109,8	117,7	141,7	10,4	26,0	-	36,2	3,0	6	8,2
08 A-1 ANSI 40	L 85 A ¹⁾	1/2"	12,7	8,0	4,2	27,4	39,4	41,8	53,8	56,2	68,2	4,5	14,0	-	18,1	1,5	-	-
10 A-1 ANSI 50	M 106 A ¹⁾	5/8"	15,875	9,0	5,2	34,1	50,1	52,3	68,3	70,4	86,4	6,8	18,0	-	24,0	1,6	-	-
12 A-1 ANSI 60	M 128 A SL ¹⁾	3/4"	19,05	13,0	6,2	38,9	58,9	61,6	81,6	84,4	104,4	7,4	20,4	-	28,0	2,4	-	-
16 A-1 ANSI 80	M 1610 A ^{1) 2)}	1"	25,4	16,0	8,2	51,0	75,0	80,2	104,2	109,5	133,5	10,4	26,0	-	36,2	3,0	-	-
Form 203.1 and 203.2																		
-	P 83 V ²⁾	1/2"	12,7	9,5	4,2	29,1	41,1	-	-	-	-	4,5	16,5	12,7	23,6	1,5	-	-
-	S 84 V ²⁾	1/2"	12,7	9,5	4,2	30,8	42,8	-	-	-	-	4,5	16,5	12,7	23,6	1,5	-	-
08 B-1	L 85 SL ^{1) 2)}	1/2"	12,7	9,5	4,2	32,6	44,6	46,5	58,5	60,4	72,4	5,4	16,5	12,7	23,6	1,5	4	5,2
10 B-1	M 106 SL ^{1) 2)}	5/8"	15,875	11,0	5,2	30,6	49,6	47,1	66,1	63,6	82,6	7,5	18,0	15,8	31,0	1,6	5	5,3
12 B-1	M 127 SL ^{1) 2)}	3/4"	19,05	12,0	6,2	35,5	56,9	54,9	76,3	74,3	95,7	9,0	20,5	19,0	37,2	1,8	5	5,5
16 B-1	M 1611 ^{1) 2)}	1"	25,4	18,0	8,2	57,7	83,9	89,6	115,8	121,5	147,8	10,4	29,0	25,4	47,2	3,0	6	8,2
08 A-1 ANSI 40	L 85 A ^{1) 2)}	1/2"	12,7	9,5	4,2	32,4	44,4	46,8	58,8	61,2	73,2	4,5	16,5	12,7	23,6	1,5	-	-
10 A-1 ANSI 50	M 106 A ^{1) 2)}	5/8"	15,875	11,0	5,2	31,1	50,1	49,3	68,3	67,3	86,4	7,5	18,0	15,8	31,0	1,6	-	-
12 A-1 ANSI 60	M 128 A SL ^{1) 2)}	3/4"	19,05	13,0	6,2	37,3	58,7	60,0	81,4	82,8	104,2	9,0	20,3	19,0	37,2	2,4	-	-
16 A-1 ANSI 80	M 1610 A ^{1) 2)}	1"	25,4	18,0	8,2	54,8	81,0	84,0	110,2	113,3	139,5	10,4	29,0	25,4	47,2	3,0	-	-
Form 201.1 and 201.2																		
208 B	LR 165 SL ²⁾	1"	25,4	10,0	4,2	26,2	38,6	-	-	-	-	6,5	13,5	14,0	24,2	1,5	-	-
210 B	LR 206 SL ²⁾	1 1/4"	31,75	11,0	5,2	30,6	49,6	-	-	-	-	7,5	18,0	18,0	30,2	1,6	-	-
212 B	LR 247 SL ²⁾	1 1/2"	38,1	13,0	6,2	34,9	55,5	-	-	-	-	9,0	19,8	20,0	36,2	1,7	-	-
216 B	LR 3211 ²⁾	2"	50,8	18,0	8,2	57,7	81,9	-	-	-	-	10,2	28,0	28,0	48,2	3,0	-	-

¹⁾ Available also for corresponding double and triple strand chains ²⁾ The bent attachment plates can also be fitted facing inwards with the top part

Iwis® Conveyor chains with bent attachment plates for fitting to iwis chains DIN 8187, 8188 and 8181

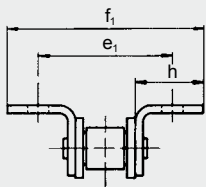
BENT ATTACHMENT PLATES

The designs shown below can be supplied as connecting links, or outer links for end fitting or repair.

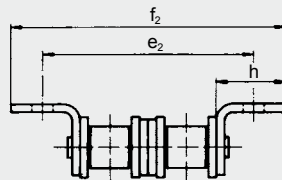
When the attachment is fitted facing inwards over the chain, threaded inserts

cannot be used. Further threaded inserts can also be supplied. Details on request.

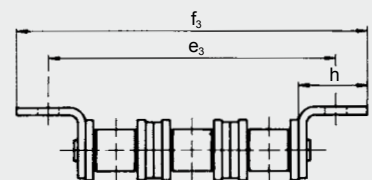
Single



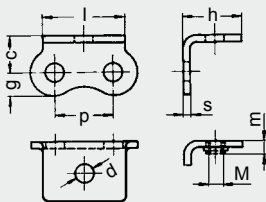
Double



Triple

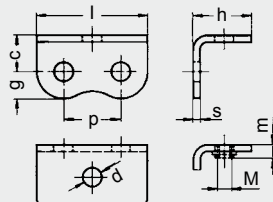


202.1



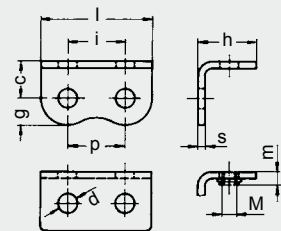
202.31 with threaded insert

203.1



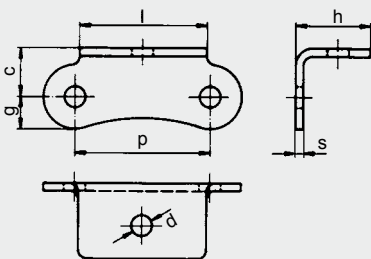
203.31 with threaded insert

203.2

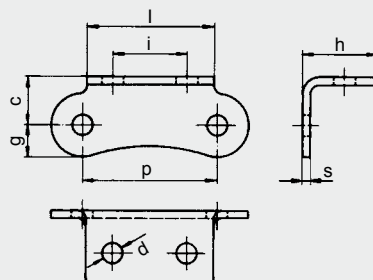


203.32 with threaded insert

201.1 for double-pitch chains



201.2 for double-pitch chains

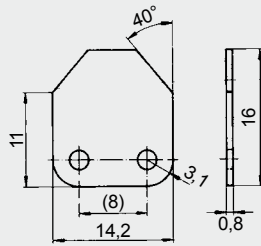


Iwis® Conveyor chains

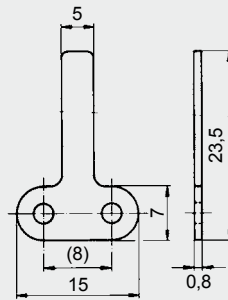
Special straight attachment plates – examples

Conveyor chains

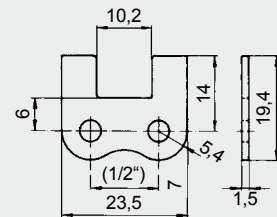
For chain G 52: Form 103.7



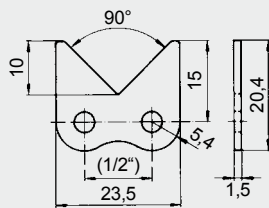
For chain G 52: Form 121.0



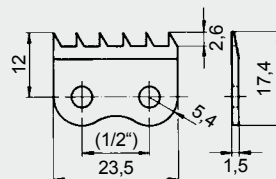
For chain L 85 SL: Form 103.62



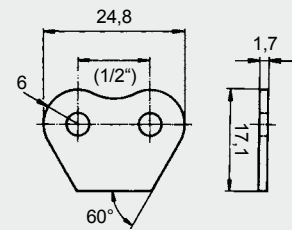
For chain L 85 SL: Form 103.63



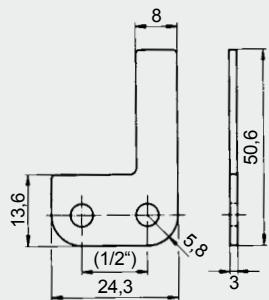
For chain L 85 SL: Form 103.65



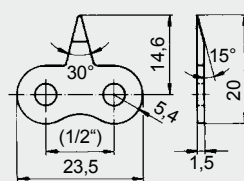
For chain L 85 SL: Form 106.0
Guide plates for inner links



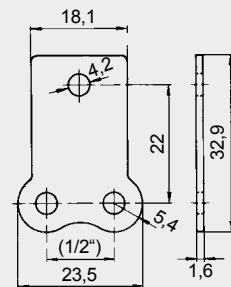
For chain L 85 SL: Form 110.0



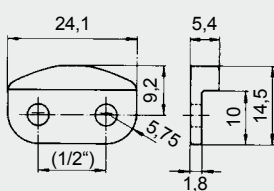
For chain L 85 SL: Form 112.0



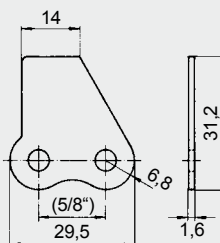
For chain L 85 SL: Form 120.11



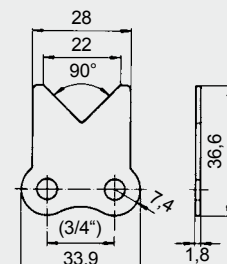
For chain L 85 SL: Trip or cam plate



For chain M 106 SL: Form 102.71

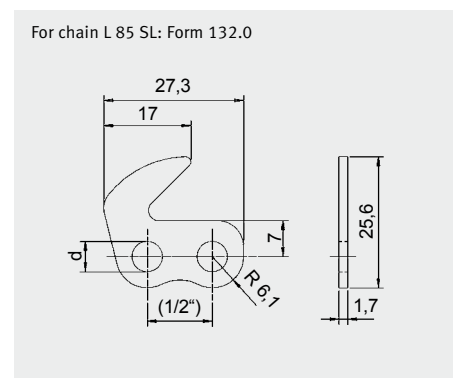
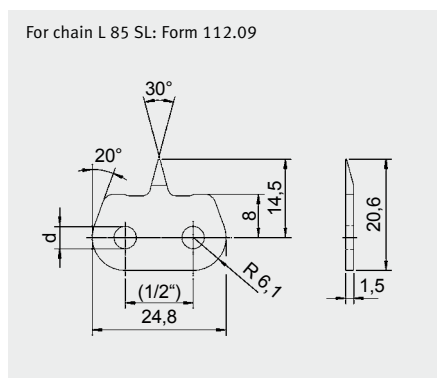
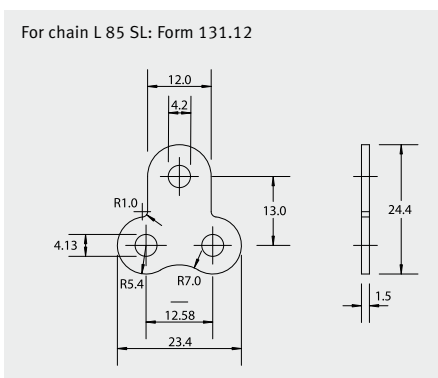
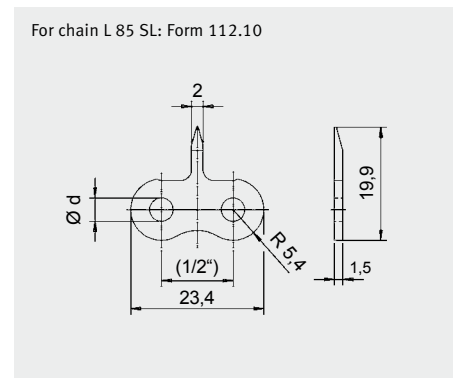
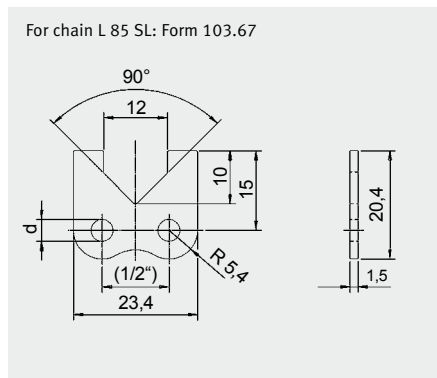
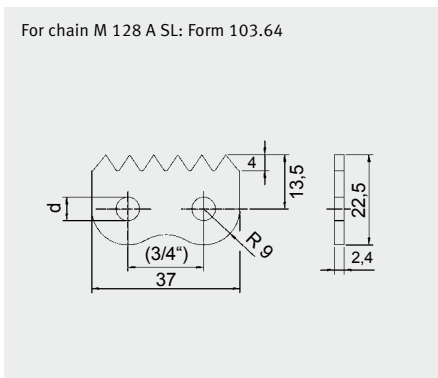
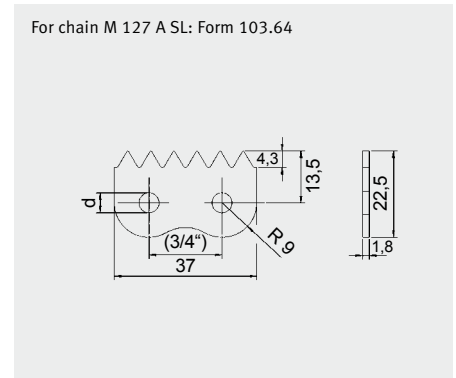
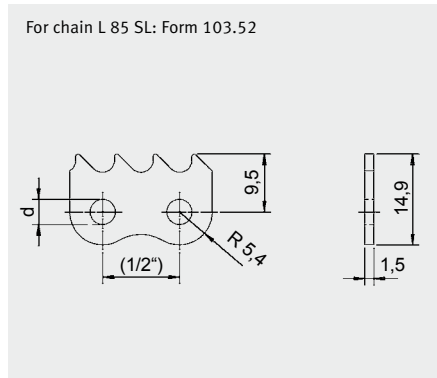
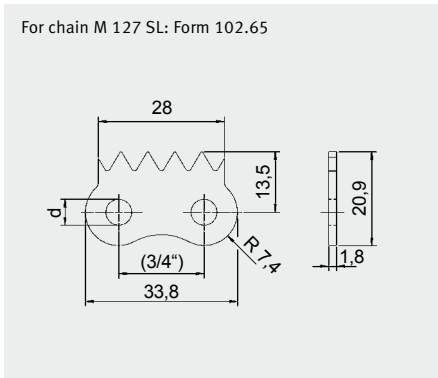
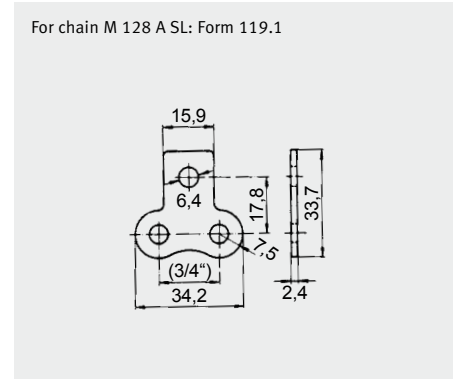
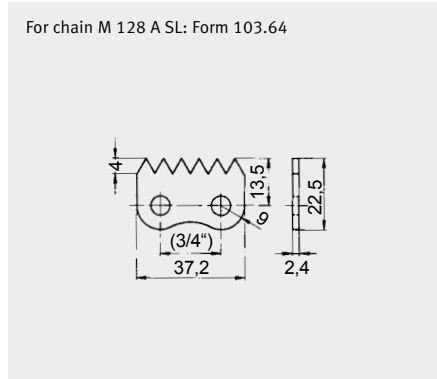
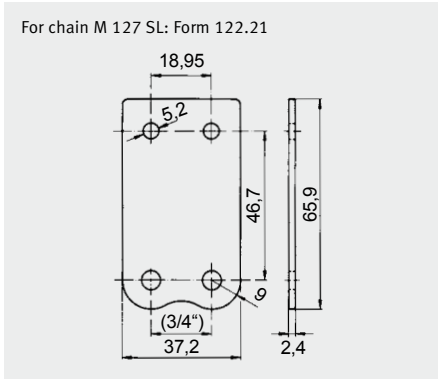


For chain M 127 SL: Form 102.61



Iwis® Conveyor chains

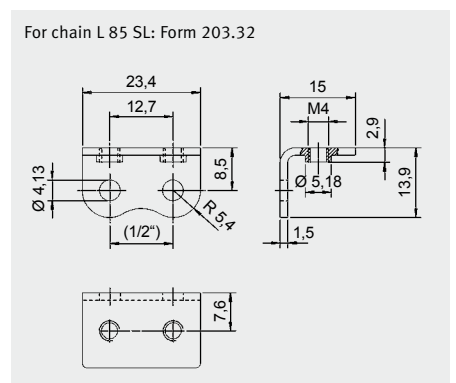
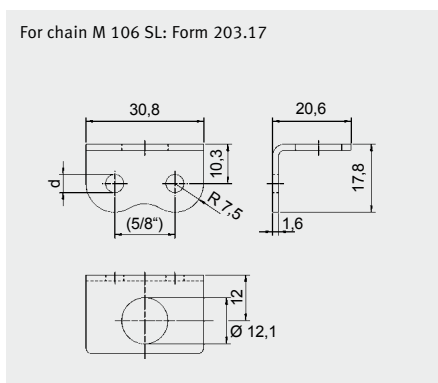
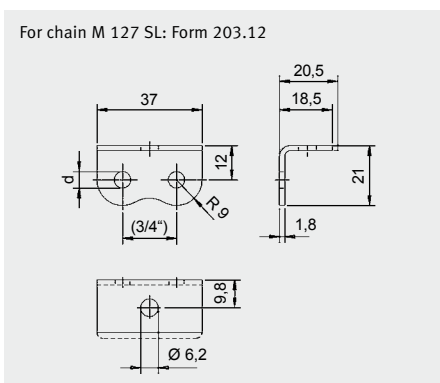
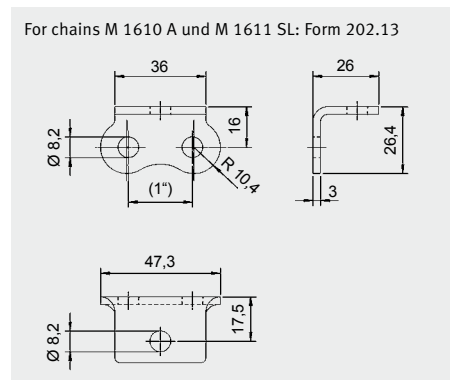
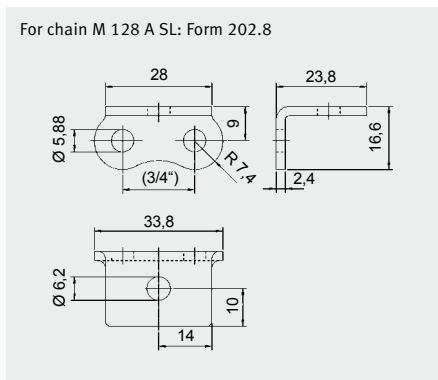
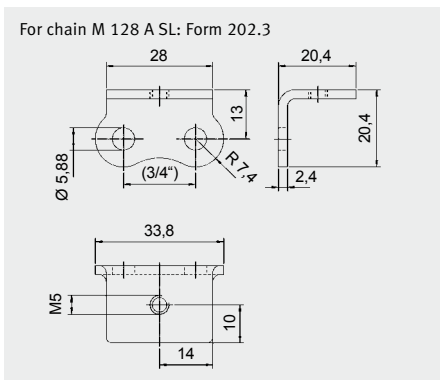
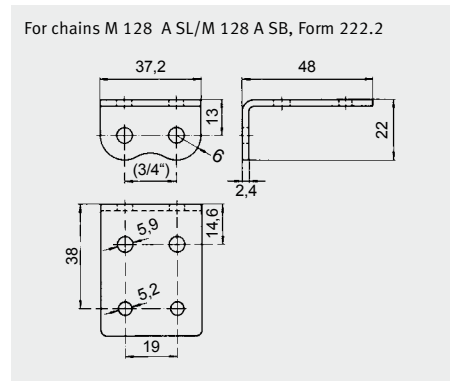
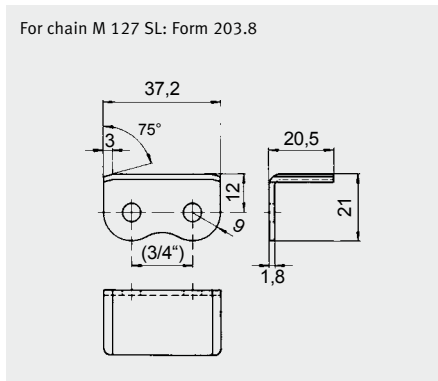
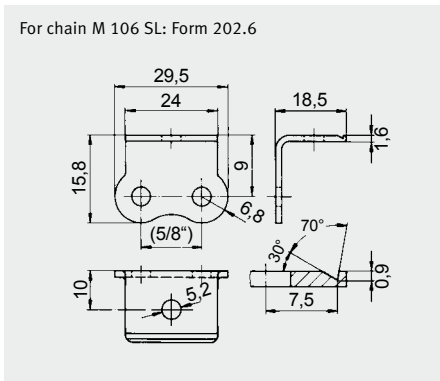
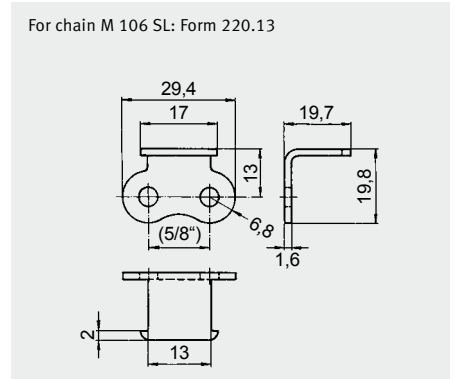
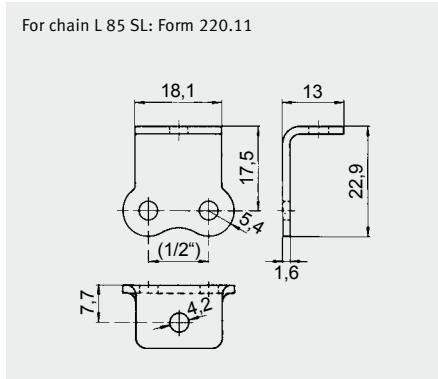
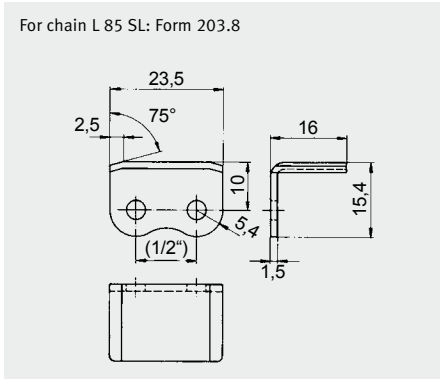
Special straight attachment plates – examples



Iwis® Conveyor chains

Special bent attachment plates – examples

Conveyor chains



Similar attachment plate designs for other chain types are available on request, as are other attachment plate designs. For some special attachment plates minimum order quantities are required.

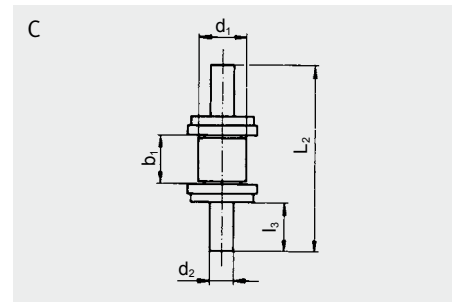
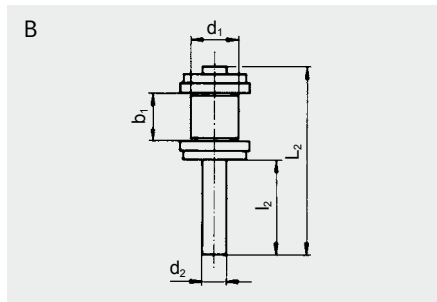
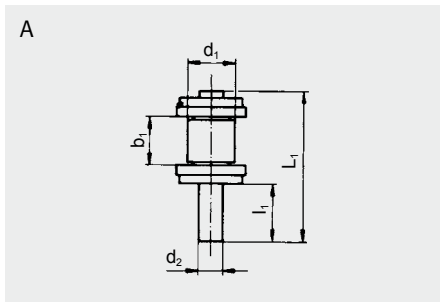
IWIS® Conveyor chains extended bearing pins for fitting to iwis chains DIN 8187, 8188 and 8181

DIN ISO no.	Ref. no. iwis ¹⁾	P (")	Pitch		Roller diameter d_1 (mm)	Extended bearing pin diameter d_2 (mm)	Design A pin length		Design B and C pin length			
			P (mm)	inner width b_1 (mm)			L_1 (mm)	l_1 (mm)	L_2 (mm)	l_2 (mm)	l_3 (mm)	
Pin design A, B, C												
05 B-1	G 52	-	8,0	3,16	5,0	2,31	17,5	10,0	27,5	20,0	10,5	
06 B-1	G 67	3/8"	9,525	5,72	6,35	3,31	22,0	10,0	34,0	22,0	11,5	
-	P 83 V	1/2"	12,7	4,88	7,75	3,68	22,0	10,0	37,0	25,0	13,0	
08 B-1	L 85 SL	1/2"	12,7	7,75	8,51	4,45	25,5	10,0	40,5	25,0	13,0	
10 B-1	M 106 SL	5/8"	15,875	9,65	10,16	5,08	30,0	12,0	48,0	30,0	15,5	
12 B-1	M 127 SL	3/4"	19,05	11,75	12,07	5,72	36,0	15,0	51,0	30,0	15,5	
16 B-1	M 1611	1"	25,4	17,02	15,88	8,28	53,5	20,0	68,5	35,0	18,0	
08 A-1 ANSI 40	L 85 A	1/2"	12,7	7,94	7,95	3,96	25,5	10,0	45,3	30,0	15,5	
10 A-1 ANSI 50	M 106 A	5/8"	15,875	9,53	10,16	5,08	31,5	12,0	48,0	29,0	15,0	
12 A-1 ANSI 60	M 128 A SL	3/4"	19,05	12,70	11,91	5,96	38,0	14,0	48,0	24,0	12,5	
16 A-1 ANSI 80	M 1610 A	1"	25,4	15,88	15,88	7,92	49,5	19,0	61,3	31,0	16,0	
208 B	LR 165 SL	1"	25,4	7,75	8,51	4,45	25,5	10,0	40,5	25,0	13,0	
210 B	LR 206 SL	1 1/4"	31,75	9,65	10,16	5,08	30,0	12,0	48,0	30,0	15,5	
212 B	LR 247 SL	1 1/2"	38,1	11,75	12,07	5,72	36,0	15,0	51,0	30,0	15,5	
216 B	LR 3211	2"	50,8	17,02	15,88	8,28	53,5	20,0	68,5	35,0	18,0	

¹⁾ For multiple strand chains on request. Other pin designs and lengths available on request.

EXTENDED BEARING PINS

The designs shown below can be supplied as connecting links or outer links for end fitting or repair (C only as outer link).



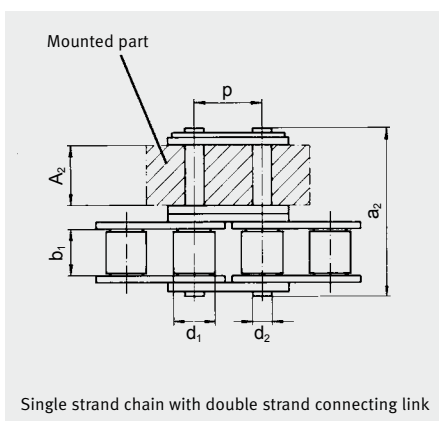
Iwis® Multiple strand connecting links for attachment of components ¹⁾

Conveyor chains

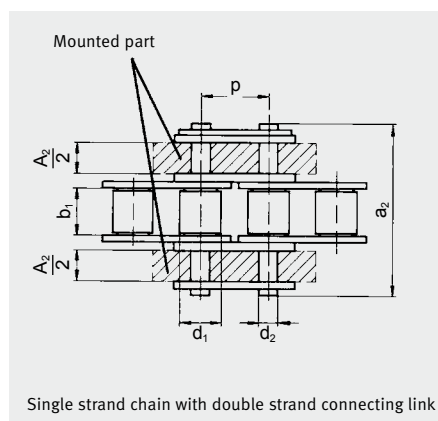
DIN ISO no.	Ref. no. iwis	Chain p (°)	Pitch Pitch of holes in component t (mm)	Inside width b ₁ (mm)	Roller diameter d ₁ (mm)	Pin diameter d ₂ (mm)	Outside width a ₂ (mm)	Outside width a ₃ (mm)	Block width A ₂ (max. mm)	Block width A ₃ (max. mm)
Double										
05B-1	G 52	8 mm	7,94	3,16	5,0	2,31	14,9	-	4,0	-
06B-1	G 67	3/8	9,42	5,72	6,35	3,31	24,5	34,6	7,0	17,5
Double / Triple										
08B-1	L 85 SL	1/2	12,58	7,75	8,51	4,45	32,3	46,2	11,3	25,2
10B-1	M 106 SL	5/8	15,76	9,65	10,16	5,08	37,4	53,9	13,3	29,9
12B-1	M 127 SL	3/4	18,95	11,75	12,07	5,72	42,9	62,4	15,6	35,1
16B-1	M 1611	1	25,3	17,02	15,88	8,28	68,7	100,6	25,5	57,4
08 A-1 ANSI 40	L 85 A	1/2	12,58	7,94	7,95	3,96	31,8	46,2	11,2	25,5
10 A-1 ANSI 50	M 106 A	5/8	15,76	9,53	10,16	5,08	39,8	57,9	13,8	32,0
12 A-1 ANSI 60	M 128 A SL	3/4	18,95	12,70	11,91	5,96	49,4	72,2	17,8	40,6
16 A-1 ANSI 80	M 1610 A	1	25,3	15,88	15,88	7,92	63,2	92,6	22,6	51,9

¹⁾ Please note the exact pitch measure „p“ for the assembly of special components.

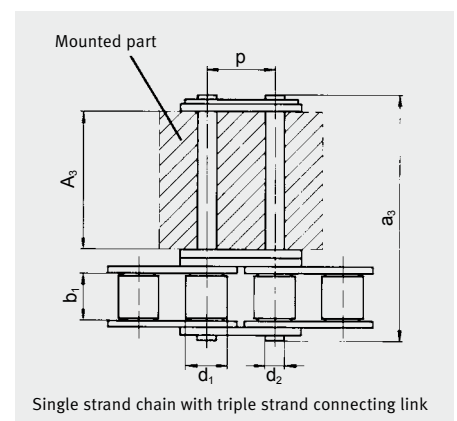
EXAMPLES



Multiple strand connecting links permit components to be fitted easily at specific locations on the chain.



Multiple strand connecting links can be supplied with normal side plates or as connecting links with straight or bent attachment plates, mounted on one or both sides.



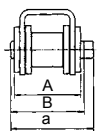
Note: The pitch of holes in the mounted part (component) differ from chain pitch.

Iwis® Conveyor chains with U-shaped attachments

for fitting to iwis roller chains DIN 8187 and 8188

DIN ISO no.	Ref. no. iwis	Pitch p (mm)	A (mm)	B (mm)	a (mm)	c (mm)	d ¹ (mm)	g (mm)	h (mm)	i (mm)	k (mm)	l (mm)	s (mm)	M (mm)	Threaded insert m max. (mm)
U-shaped attachment 303.2 / 303.32 / 303.9															
08B-1	L 85 SL	12,7	17,8	19,8	21,5	9,5	4,1	6,3	14,6	12,6	3,0	24,2	1,5	4	5,2
08B-2	D 85 SL	12,7	31,8	33,9	35,5	9,5	4,1	6,3	28,5	13,9	3,0	24,2	1,5	4	5,2
10B-1	M 106 SL	15,875	20,0	22,0	24,0	12,0	7,1	7,5	16,6	15,8	3,0	31,0	1,5	5	5,2
16 A-1 ANSI 80	M 1610 A	25,4	33,7	36,5	38,4	16,2	8,7	10,5	27,3	25,3	5,0	49,2	2,1	6	7,3

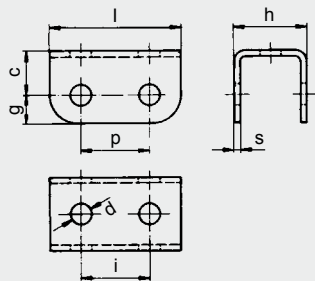
¹⁾ Alternative diameters: for L 85 SL: 5,8 mm / for M 106 L: 4,7 mm



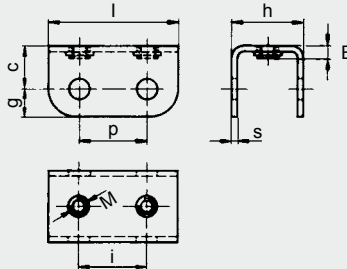
Chain width:

When U-shaped attachments are fitted between the inner and outer plates, the chain width increases above the norm.
 a = pin length of connecting link

Form 303.2 with standard attachment holes

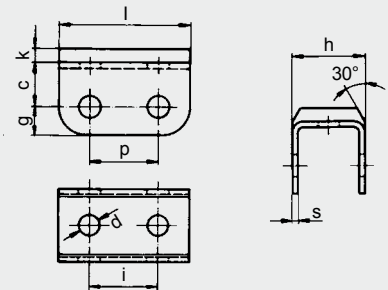


Form 303.32 with threaded inserts



With D 85 SL threaded inserts are positioned transversely to the chain

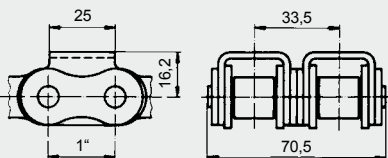
Form 303.9 with rubber cover



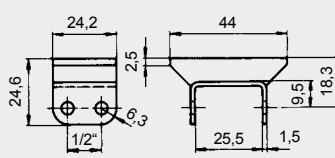
Cover material: Perbunan
 Hardness: 65 Shore / Temperature: -30 up to +100 °C

SPECIAL DESIGNS

1"-double strand chain with special U-shaped attachment. Base chain: iwis M 1610 A



No. 303.94 for chain D 85 SL



No. 303.97 for chain L 85 SL

