

# SPECIFICATIONS

Material:

Insulator: Glass filled PA6T (UL94V-0), Black

Contacts: Brass

Plating: Au or Sn over 50u'' Ni

**Electrical Characteristics:**

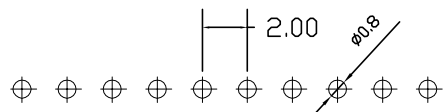
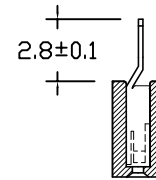
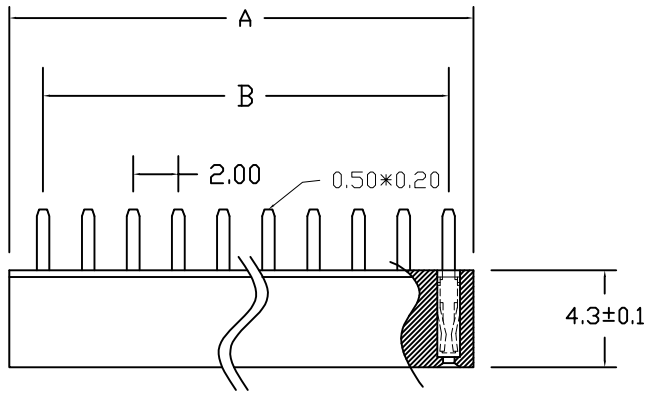
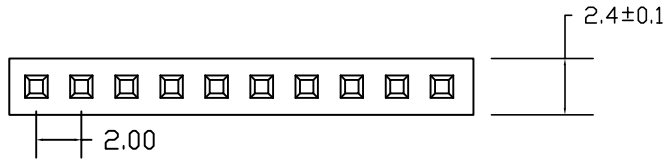
Contact Resistance: 20mΩ Max.

Insulator Resistance: 1000MΩ Min.

Withstanding Voltage: AC 500V

Current Rating: 1.5 AMP

Operating Temperature: -40°C to +105°C



PCB LAYOUT

Position Dimension	2 Thru 40
A± 0.30	2.00 * No. of Positions+0.40
B± 0.20	2.00 * No. of Contacts-2.00

未注公差按公差分段要求

MATERIAL(材质)		单位 MM	比例 按图纸缩放	日期 2013-4-23	深圳市百富特电子有限公司	
主体	PA6T					
端子	黄铜镀金	制图	审查	核准	品名	2.0*4.3
公差分段	>10 ±0.3 <10 ±0.2 <3 ±0.1					单排直母 1*NP
视角						刘建