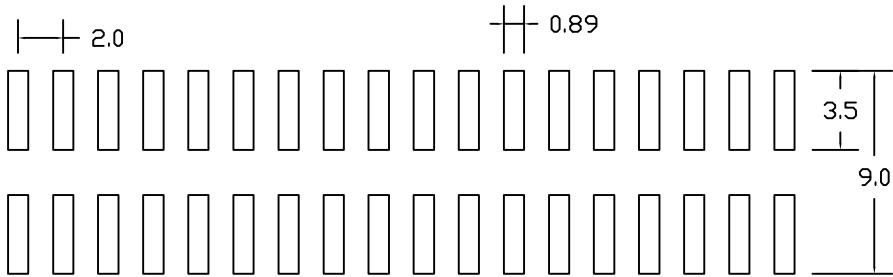
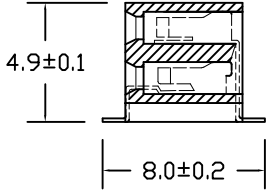
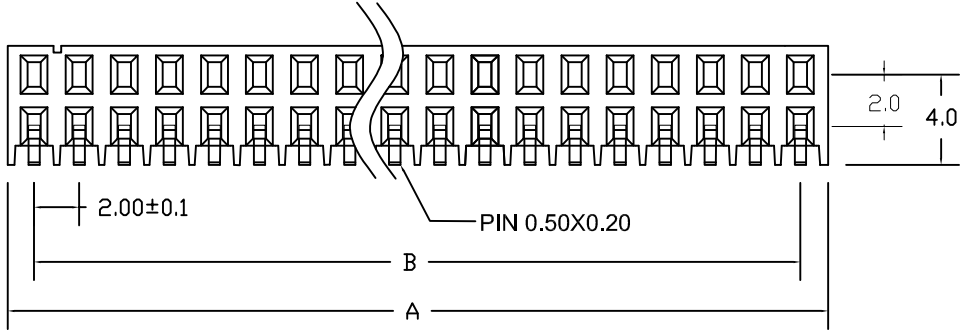
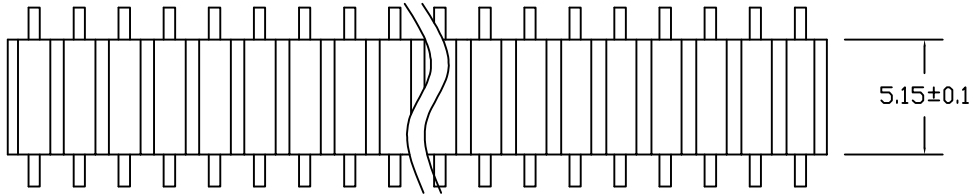


SPECIFICATIONS

Material:
 Insulator: Glass filled PA6T (UL94V-0), Black
 Contacts: Brass
 Plating: Au or Sn over 50u'' Ni
Electrical Characteristics:
 Contact Resistance: 20mΩ Max.
 Insulator Resistance: 1000MΩ Min.
 Withstanding Voltage: AC 500V
 Currernt Rating: 1.5 AMP
 Operating Temperature: -40°C to +105°C



PCB LAYOUT

Position Dimension	1 Thru 40
A± 0.30	2.00 * No. of Positions+0.4
B± 0.20	2.00 * No. of Contacts-2.00

MATERIAL(材质)		单位 MM	比例 按图纸缩放	日期 2013-05-30	深圳市百富特电子 有限公司	
主体	PA6T					
端子	黄铜镀金	制图	审查	核准	品名	2.0*5.15 双排母座 侧SMT 2*NP
公差 分段	>10 ±0.3 <10 ±0.2 <3 ±0.1					
视角						