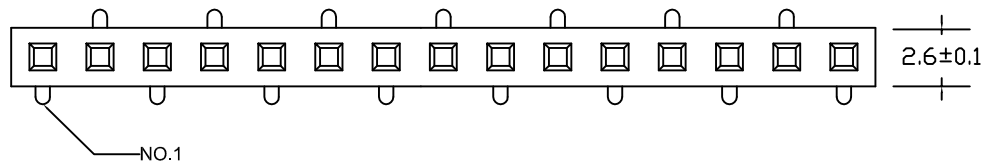
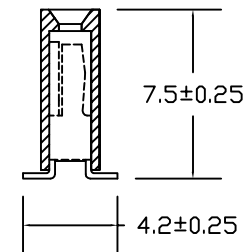
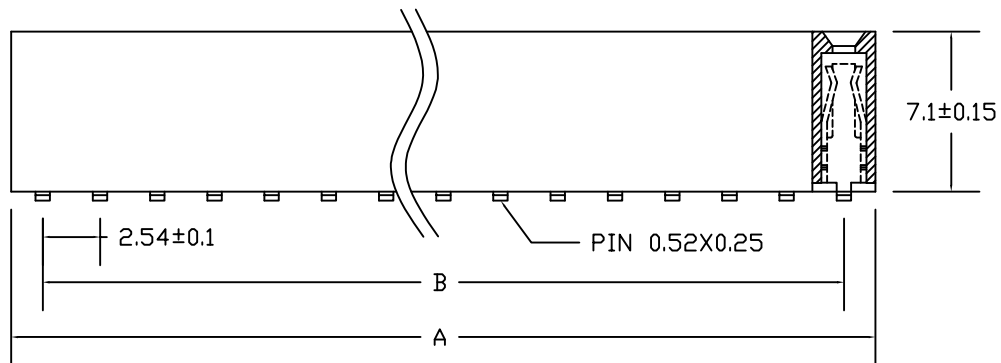


TYPE 1



TYPE 2



### SPECIFICATIONS

#### Material:

Insulator: Glass filled PA6T (UL94V-0), Black  
 Contacts: Brass  
 Contact Plating: Au or Sn over 50 u'' Ni  
 Plating: 1u'' Au

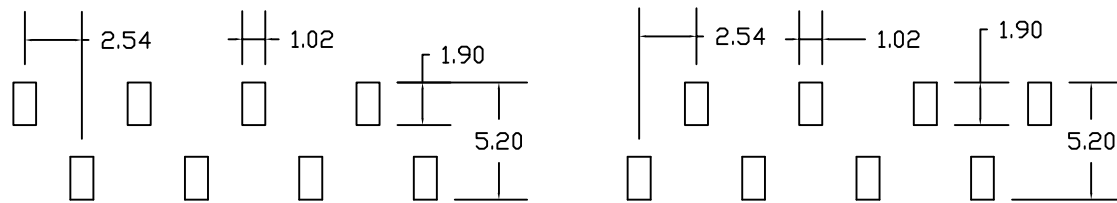
#### Electrical Characteristics:

Contact Resistance: 20mΩ Max.  
 Insulator Resistance: 1000MΩ Min.  
 Withstanding Voltage: AC 1000V  
 Currernt Rating: 3 AMP  
 Operating Temperature: -40°C to +105°C

Position Dimension	2 thru 40
A± 0.30	2.54 * No. of Positions+0.40
B± 0.25	2.54 * No. of Contacts-2.54

未注公差按公差分段要求

MATERIAL(材质)		单位 MM	比例 按图纸缩放	日期 2012-05-11	深圳市百富特电子有限公司	
主体	PA6T					
端子	黄铜镀金	制图	审查	核准	品名	2.54(H7.1)1*NP SMT 排母
公差分段	>10 ±0.30 <10 ±0.25 <3 ±0.10					
视角						



TYPE 1

PCB LAYOUT

TYPE 2