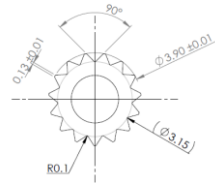
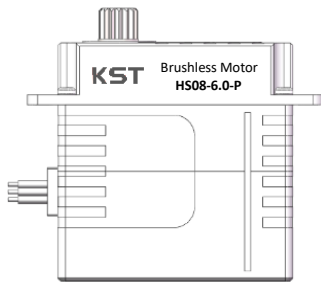
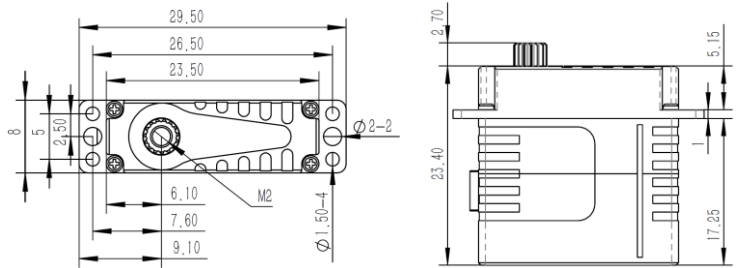


HS08-6.0-P Technical Specification



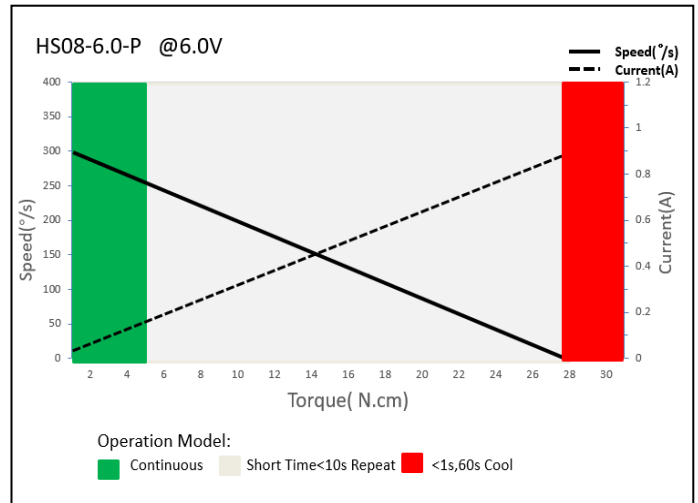
15T 4mm
Output Shaft Spline



1. Servo Data

2. Performance

	HS08-6.0-P
Rated Voltage	DC6.0V
Voltage Range	DC4.8V-8.4V
Stalling Torque	20N.cm@4.8V
	28N.cm@6.0V
	40N.cm@7.4V
Rated Torque	5N.cm@6.0V
Stalling Current	0.85A@6.0V
Rated Current	0.25A@6.0V
No-load Speed	0.23sec/60°@4.8V
	0.18sec/60°@6.0V
	0.14sec/60°@7.4V
Rated Speed	0.23sec/60°@6.0V
Default Travel Angle	±50° = 100° Total travel
Operating	-30°C.....+65°C
Case Material	Aluminum Alloy
Motor Type	Brushless DC Motor
Gear Set Material	Hardened Steel
Position Sensor	Potentiometer
Ball Bearing	2BB
Case Dimensions	23.5mm*8mm*23.4mm±0.2mm
Weight	11g ±10%



3. Command Signal

3.1. PWM Command Interface

Signal Voltage	HIGH:min.3.3V,max.5.0V Low:min.0.0V,max.1.5V
Pulse Lengths	9000us-2100us
Pulse Lengths for Position -50° 0°/+50°	1000us/1500us/2000us

4. Electrical Connection

	Pin Assignment			
	1	Orange	PWM	PWM Command Signal
	2	Red	DC+	Supply Voltage
	3	Brown	DC-	Supply Ground, Signal Ground