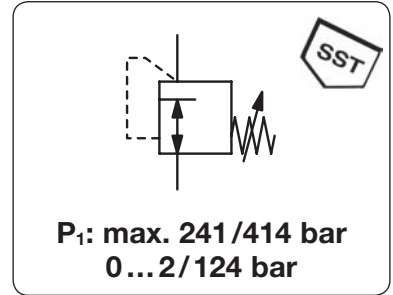


# Miniature High Pressure Regulator up to 414 bar RPH0 / RPH1

|                           |   |  |
|---------------------------|---|--|
| <b>Description</b>        | Diaphragm-operated high pressure regulator of small and light design.         |  |
| <b>Adjustment</b>         | by black plastic knob   |  |
| <b>Relieving function</b> | non-relieving   | <b>Weight</b> aluminium 200 g, brass 430 g                                 |
| <b>Gauge port</b>         | 1/4" NPT for inlet and outlet pressure  | <b>Mounting position</b> any   |
| <b>Media</b>              | <b>RPH0</b><br>corrosive or non-corrosive gases up to purity 5.0 max. 241 bar | <b>RPH1</b><br>compressed air, non-corrosive gases or liquids max. 414 bar |
| <b>Supply pressure</b>    | < 1 x 10 <sup>-6</sup> mbar l/s He  | < 1 x 10 <sup>-4</sup> mbar l/s He   |
| <b>Leakage rate</b>       | -40 °C to 60 °C / -40 °F to 140 °F  | -25 °C to 75 °C / -13 °F to 167 °F   |
| <b>Temperature range</b>  | brass, optionally stainless steel or aluminium                                | nickel-plated aluminium  |
| <b>Body</b>               | diaphragm made of stainless steel   | piston with EPDM o-ring, as option NBR or FKM                              |
| <b>Regulating system</b>  | PFA or CTFE as option   | CTFE or Vespel as option   |
| <b>Valve seat</b>         | brass, optionally stainless steel   | stainless steel and aluminium  |
| <b>Inner valve</b>        |   |  |



| Dimensions |        |        | K <sub>v</sub> value (m³/h) | Flow rate (m³/h) | Flow rate (l/min) | Connection thread NPT | Pressure range (bar) | Order number |
|------------|--------|--------|-----------------------------|------------------|-------------------|-----------------------|----------------------|--------------|
| A (mm)     | B (mm) | C (mm) |                             |                  |                   |                       |                      |              |

| High pressure regulator 241 bar |    |    |      |     |       | for gases, non-relieving, brass, stainless steel diaphragm | RPH0                          |                                  |
|---------------------------------|----|----|------|-----|-------|--|-------------------------------|----------------------------------|
| 41                              | 82 | 14 | 0.05 | 9*1 | 150*1 | 1/4" NPT   | 0.2...2<br>0.4...4<br>0.6...7 | RPH0-02A<br>RPH0-02B<br>RPH0-02C |

| High pressure regulator 414 bar |    |    |      |       |        | for gases and liquids, non-relieving, aluminium, piston with EPDM | RPH1                                |                                  |
|---------------------------------|----|----|------|-------|--------|---|-------------------------------------|----------------------------------|
| 41                              | 76 | 13 | 0.05 | 84*2  | 1400*2 | 1/4" NPT  | 0.5... 5<br>0.5... 10<br>1.5... 15  | RPH1-02A<br>RPH1-02B<br>RPH1-02C |
| 41                              | 76 | 13 | 0.05 | 192*3 | 3200*3 | 1/4" NPT  | 4.0... 48<br>8.0... 83<br>10... 124 | RPH1-02D<br>RPH1-02E<br>RPH1-02F |



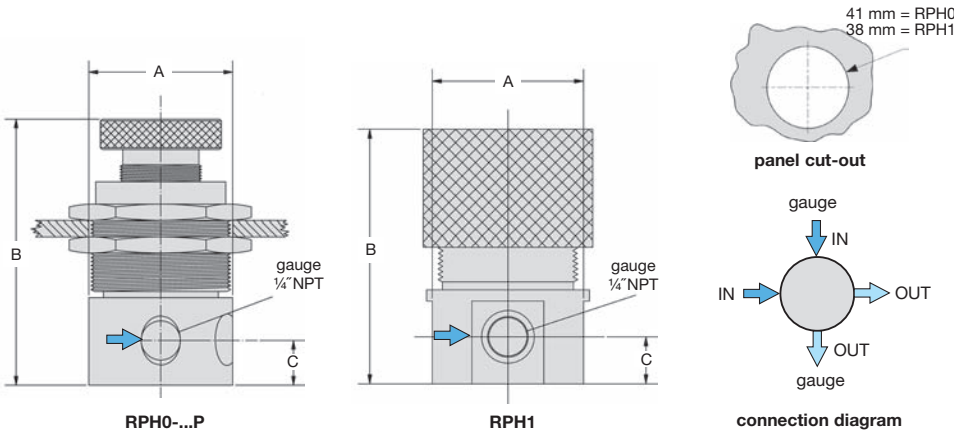
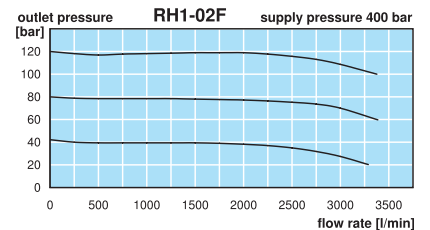
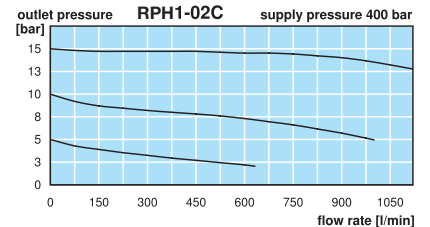
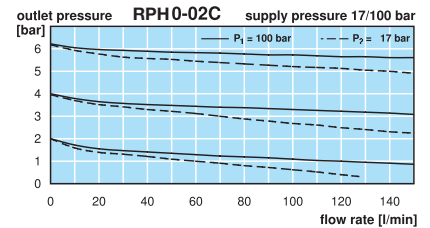
RPH0



RPH1

## Special options, add the appropriate letter

- 1/8" NPT connection thread for RPH0 RPH0-01.
- aluminium body for RPH0 RPH0-02 .A
- stainless steel body for RPH0 RPH0-02S
- CTFE seat for RPH0 RPH0-02 .X52
- Vespel seat for RPH1 RPH0-02 .X45
- NBR/Buna-N o-ring for RPH1 RPH1-02 .N
- FKM o-ring for RPH1 RPH1-02V
- free of grease and oil suitable for oxygen, specially cleaned, P<sub>1</sub> < 200 bar for RPH0 RPH0-02L
- for oxygen inlet side **HM** for RPH1 RPH1-0215
- brass pressure gauge inlet side **H** outlet side RPH. -02 .GM
- SST pressure gauge inlet side **H** outlet side RPH. -02 .G
- for panel mounting outlet side for RPH0 RPH0-02.P



\*1 at 100 bar supply pressure and 6 bar outlet pressure  
\*2 at 400 bar supply pressure and 15 bar outlet pressure  
\*3 at 400 bar supply pressure and 120 bar outlet pressure



**Order example:**  
RPH0-02A  
China website: www.duray-control.cn