



The 4-way double membrane seal (IP66) offers secure cable entry for up to four cables thanks to a double seal with two sealing membranes.

The highly elastic, flat 4-way double-membrane seal is made from thermoplastic elastomer. The high-quality, halogen-free material is very flexible and extremely durable. This guarantees high safety reserves for the installation. In addition, the four insertion openings of the sealing element are all constructed as double membranes to achieve the high IP 66 protection rating, protecting the installation against dust and strong water jets.

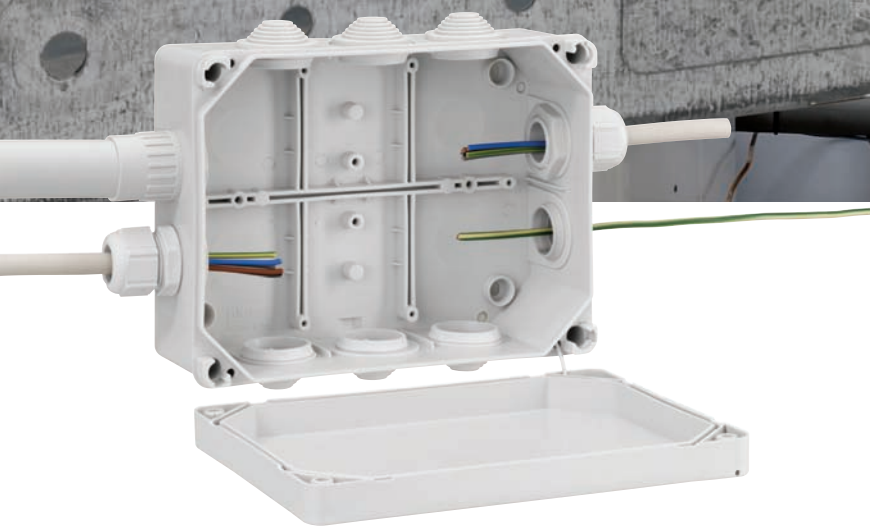
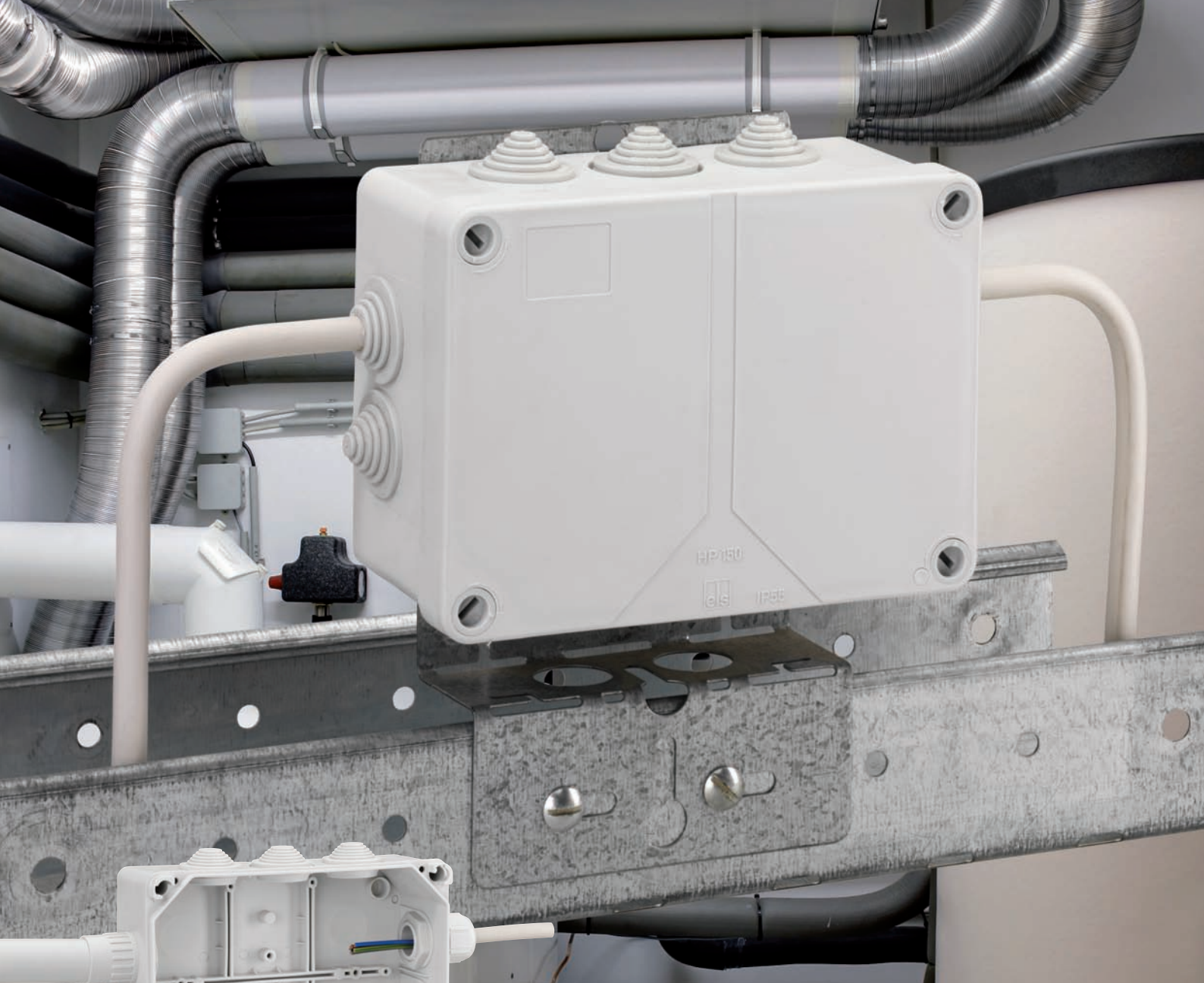
Thanks to the M32 inlet seals, one to four cables ranging in diameter from 3.5 to 6 mm can be inserted and sealed reliably, saving time and space.

The openings are made simply by cutting off the caps on the attachment bushes. With reliable sealing, the double membranes of the openings fit the diameter of the cable optimally, but the installation still remains flexible. The multiple double membrane seal is suitable for installation in all enclosures with a wall thickness of 1.5 to 4.5 mm.

You can find other sealing elements on pages 456-463.



The right accessories for every application.



- 6 sizes
- Mounting on wood or other combustible materials
- Mounted stepped nipples
- Cross-sectional area of 1.5 mm<sup>2</sup> to 10 mm<sup>2</sup>
- Insertion points are equally suitable for metric mounting accessories

**Suitable for installation**

- in damp and wet areas and rooms
- in installations for gatherings of people
- In temporary buildings, cars and caravans

IP55

10<sup>2</sup>

IK07

400V  
AC

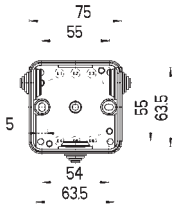
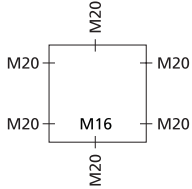
**Junction boxes HP.**

| Usage  |               |
|--|---------------|
| Weak acids   | ●             |
| Strong acids   | ●             |
| Weak bases   | ●             |
| Strong bases   | ●             |
| Alcohol  | ●             |
| Petrol   | ◐             |
| Benzene  | ◐             |
| Mineral oil  | ●             |
| Diesel   | ⊗             |
| Ammonia  | ●             |
| Vegetable fats   | ●             |
| Animal fats  | ●             |
| Free of halogens, heavy metals, PVC and silicone         | no            |
| Combustion behaviour acc. to VDE 0471 / EN 60695 / UL 94 | 960°C/<br>V-2 |

● = resistant    ◐ = partially resistant  
⊗ = not resistant

### HP 70

75 x 75 x 42 mm,  
internal dimension: 68 x 68 x 38 mm



Description

Order No.

Packing Qty

Junction box acc. DIN EN 60670 (VDE 0606),  $U_i=400V$ ,  
3 recessed stepped nipples and two loose ones enclosed, seal range 5 - 16 mm,  
for terminals up to 2.5 mm<sup>2</sup>

IP55

2,5<sup>2</sup>

IK07



400V  
AC



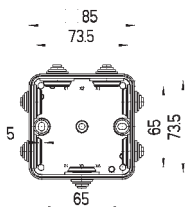
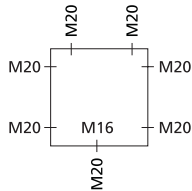
**HP 70-L**  
grey, without terminals

320 970 01

60/1

### HP 80

85 x 85 x 42 mm  
internal dimension: 78 x 78 x 38 mm



Junction box acc. DIN EN 60670 (VDE 0606),  $U_i=400V$ ,  
7 recessed stepped nipples, seal range 5 - 16 mm, for terminals up to 2.5 mm<sup>2</sup>

IP55

2,5<sup>2</sup>

IK07



400V  
AC



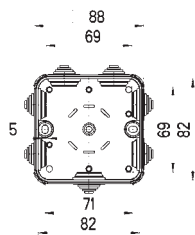
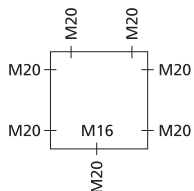
**HP 80-L**  
grey, without terminals

322 980 01

50/1

### HP 90

90 x 90 x 45 mm,  
internal dimension: 82 x 82 x 38 mm



Description Order No. Packing Qty

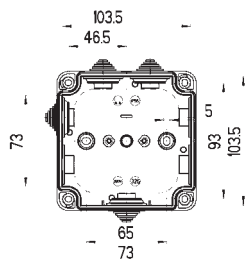
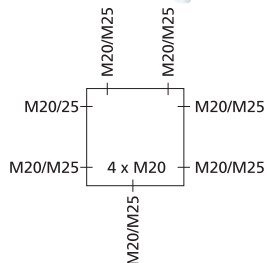
Junction box acc. DIN EN 60670 (VDE 0606),  $U_i=400V$ ,  
7 recessed stepped nipples, seal range 5 - 16 mm, for terminals up to 4 mm<sup>2</sup>

IP55
4<sup>2</sup>
IK07
400V AC
DVE

|   |            |      |
|---|------------|------|
| <b>HP 90-L</b><br>grey, without terminals | 325 990 01 | 40/1 |
|---|------------|------|

### HP 100

113 x 113 x 58 mm  
internal dimension: 103.5 x 103.5 x 32 mm



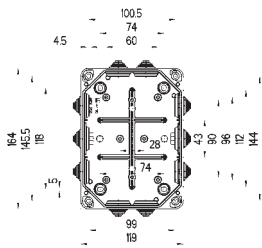
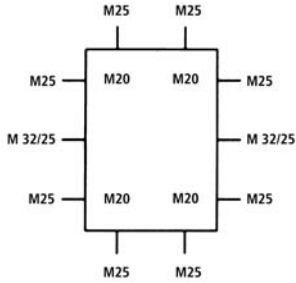
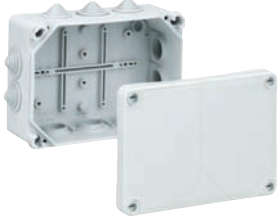
Junction box acc. DIN EN 60670 (VDE 0606),  $U_i=690V$ ,  
7 recessed stepped nipples, seal range 5 - 21 mm, for terminals up to 10 mm<sup>2</sup>

IP55
10<sup>2</sup>
IK07
690V
DVE

|  |            |      |
|--|------------|------|
| <b>HP 100-L</b><br>grey, without terminals | 326 900 01 | 20/1 |
|--|------------|------|

### HP 150

164 x 119 x 77 mm  
internal dimension: 155 x 110 x 70 mm



Description

Order No.

Packing Qty

Junction box,  $U_i=690V$ , 10 recessed stepped nipples, seal range 5 - 21 mm

IP55

IK07



690V



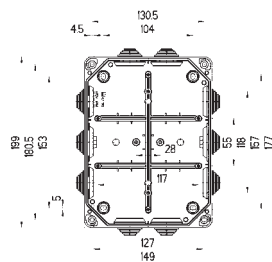
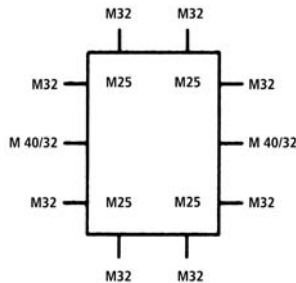
**HP 150-L**  
grey, without terminals

326 950 01

12/1

### HP 190

199 x 149 x 77 mm  
internal dimension: 190 x 140 x 70 mm



Junction box,  $U_i=690V$ , 10 recessed stepped nipples, seal range 13 - 26.5 mm

IP55

IK07



690V



**HP 190-L**  
grey, without terminals

326 990 01

8/1