

**Flow Meters**

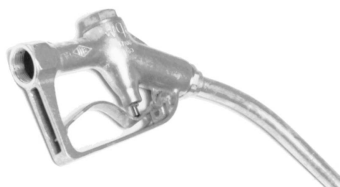
**U.S. GALLONS**

PART NO.	DESCRIPTION
A101523	ALUMINUM FLOW METER - 3 TO 50 GPM, MAX PSI 300
A101524	NYLON FLOW METER - 3 TO 50 GPM, MAX PSI 150
A101525	316SS FLOW METER - 3 TO 50 GPM, MAX PSI 800

**METRIC**

PART NO.	DESCRIPTION
A101527	1" ALUMINUM FLOW METER - 10 TO 190 LPM, MAX BAR 20.7
A101528	1" NYLON FLOW METER - 10 TO 190 LPM, MAX BAR 10.3
A101529	1" 316SS FLOW METER - 10 TO 190 LPM, MAX BAR 55.2

- QUALITY BUILT
- FIELD REPLACEABLE LITHIUM BATTERIES
- ENCAPSULATED ELECTRONICS FOR MOISTURE PROTECTION
- THE TOTALIZERS - 1 CUMULATIVE AND 2 RESETTABLE
- THREE CALIBRATION CURVES WITH UP TO 5 CALIBRATION POINTS
- RATE OF FLOW WITH BYPASS
- ONE YEAR FACTORY WARRANTY
- MODELS ALSO COME WITH A 1" CLOSE NIPPLE

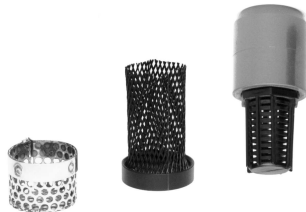
**Nozzles**


PART NO.	DESCRIPTION
A101497	<p>1" POLYPROPYLENE DISPENSING NOZZLE</p> <ul style="list-style-type: none"> <li>• FLOW RATE TO 27 GPM</li> <li>• MAX 75 PSI</li> <li>• STAINLESS HANDLE, SPRING AND PIN</li> <li>• TEFLON BUSHING</li> <li>• VITON RUBBER PARTS</li> <li>• QUICK RELEASE ACTION</li> <li>• INCLUDES POLYPRO HOSE BARB AND SS CLAMP</li> </ul> <p>THIS PRODUCT HAS A WIDE RANGE OF INDUSTRIAL AND AGRICULTURAL APPLICATIONS. IT IS IDEAL FOR FILLING CONTAINERS WITH MILD CORROSIVE FLUIDS.</p>
A101522	<p>1" SINGLE UNION POLY VALVE WITH ANGLE HOSE END</p> <ul style="list-style-type: none"> <li>• FLOW RATE TO 40 GPM</li> <li>• INCLUDES POLYPRO HOSE BARB AND SS CLAMP</li> <li>• NO FLUID CONTACT WITH METAL PARTS</li> </ul> <p>THIS VALVE IS IDEAL FOR MORE PRECISE METERED FILLING OPERATIONS. USE WITH CORROSIVE MATERIALS.</p>
J101929	<p>1" ALUMINUM DISPENSING NOZZLE</p> <ul style="list-style-type: none"> <li>• FLOW RATE 17 GPM AT 34 PSI</li> <li>• USE FOR DISPENSING FLAMMABLES</li> <li>• QUICK RELEASE ACTION</li> </ul> <p>USE THIS VALVE WHEN DISPENSING FLAMMABLE LIQUIDS. WHEN THE NOZZLE IS PART OF A PROPERLY GROUNDED PUMP SYSTEM, FLAMMABLE LIQUIDS ARE SAFER TO HANDLE. USE THE STATIC PROTECTION KIT (SHOWN IN THIS CATALOG SHEET) WITH THIS PRODUCT.</p>

## Inlet Strainer

PART NO.	PUMP MODELS	CONSTRUCTION
A100109	TT, TB** (1-5/8" O.D.)	PVC/POLYPROPYLENE
A100111	PF, BT (2" O.D.)	316SS
A100337	TT, TB (1-1/2" O.D.)	316SS
A100855	PF (2" O.D.)	POLYPROPYLENE

\*\*FOR USE WITH CPVC TUBE



## Discharge Tubing

PART NO.	PUMP MODELS	CONSTRUCTION
J103470	EP	3/4" PVC
J102785	TB, TT	1" PVC
M100076	BT	1-1/2" PVC
J100302	PF	1" REINFORCED PVC



## Static Protection Kit

PART NO.	PUMP MODELS
A100835	PFS, TBS, TTS, STTS
A101521*	PFS, TBS, TTS, STTS
A100836	BTS, SBTS
A100961	TMS (includes ground wire assy. only)

### CONTENTS

- 1 - 4' GROUNDED HOSE WITH SPECIAL ENDS
- 1 - 6' MOTOR/TUBE GROUND WIRE WITH CLAMP AND TWO (AIR OR ELEC.) TERMINALS WITH LOCKWASHERS
- 1 - STAINLESS STEEL HOSE CLAMP
- 1 - #8-32 X 1/4 BRASS RD HD SCREW WITH #8 BRASS LOCKWASHER

\*GROUNDED HOSE HAS THREADED END TO ATTACH J101929 ALUMINUM NOZZLE

NOTE: SPECIAL HOSE LENGTHS AVAILABLE UPON REQUEST



## 2" IPS Drum Adapter

PART NO.	PUMP MODELS	CONSTRUCTION
M100088	BT, PF, TM	GALVANIZED STEEL
M100089	TT, TB*	GALVANIZED STEEL
M100090	TT, TB*	POLYPROPYLENE
M100091	TT, TB**	POLYPROPYLENE
M100092	TT, TB*	316SS
M100094	BT, PF, TM	316SS
M100095	BT, PF, TM	POLYPROPYLENE
J100366	EP	POLYPROPYLENE

\*FOR USE WITH STAINLESS STEEL TUBE

\*\*FOR USE WITH CPVC TUBE



## Wall Mount Bracket



PART NO.	PUMP MODELS
M100015	TB, PF, TT, TM, BT-1, BT-2
M100740	BT-3

## Filter Lubricator



### FILTER LUBRICATOR ASSEMBLY

PART NO.	MOTOR MODELS
A100003	M2, M6, M6X, M18,
A100221	M19, M20

### 15' AIR HOSE

PART NO.	MOTOR MODELS
A100009	M2, M6, M6X, M18
J100243	M19, M20



### FINISH THOMPSON INC.

921 Greengarden Road • Erie, PA 16501-1591 U.S.A.  
Ph 814-455-4478 • Fax 814-455-8518  
Email ft@finishthompson.com • www.finishthompson.com

Toll Free USA & Canada 1-800-834-9384  
Literature ID No. FT95-566D, 9-03

