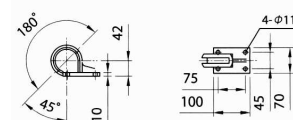
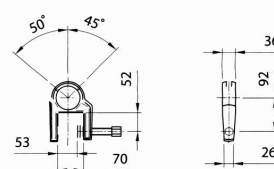


## C 型液体搅拌机



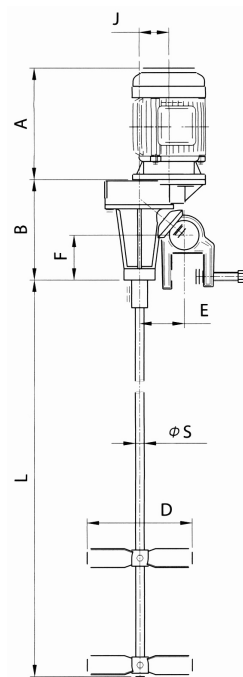
P 型夾板 P-Plate



C 型夾頭 C-Clamp

尺寸表 Dimension Table

型号	转速 Rpm		使用马达	Dimension:mm								图样
Type	60Hz	50Hz	Motor	A	B	J	E	F	D	S	L	Pic
C-020	1720	1450	1/4HP-4P	225	234	0	98	60	100	19	650	A
	430	360	1/4HP-4P	225	223	65	98	60	230	19	800	B
	330	280	1/4HP-4P	225	223	65	98	60	230	19	800	B
	220	175	1/4HP-4P	225	237	20	98	60	260	19	800	C
	100	85	1/4HP-4P	225	237	20	98	60	260	19	800	C
C-050	1720	1450	1/2HP-4P	248	234	0	98	60	100	19	650	A
	1120	1000	1/4HP-6P	248	234	0	98	60	100	19	700	A
	430	360	1/2HP-4P	248	223	65	98	60	230	19	1000	B
	330	280	1/2HP-4P	248	223	65	98	60	230	19	1000	B
	200	175	1/2HP-4P	248	237	20	98	60	260	19	1000	C
	100	85	1/2HP-4P	248	237	20	98	60	260	19	1000	C
C-100	1720	1450	1HP-4P	242	325	0	124	123	150	22	700	A
	1120	1000	1/2HP-6P	242	325	0	124	123	150	22	800	A
	510	430	1HP-4P	242	300	95	124	123	330	22	1200	B
	360	300	1HP-4P	242	300	95	124	123	330	22	1200	B
	290	250	1HP-4P	242	300	38	124	123	330	22	1200	C
	240	200	1HP-4P	242	315	38	124	123	360	22	1200	C
	190	160	1HP-4P	242	315	38	124	123	360	22	1200	C
	140	120	1HP-4P	242	315	38	124	123	360	22	1200	C
	115	100	1HP-4P	242	315	38	124	132	360	22	1200	C
	90	80	1HP-4P	242	315	38	124	123	360	22	1200	C
C-200	1720	1450	2HP-4P	322	325	0	124	123	150	25	800	A
	1120	1000	1HP-6P	322	325	0	124	123	200	25	900	A
	510	430	2HP-4P	322	300	98	124	123	330	25	1400	B
	360	300	2HP-4P	322	300	98	124	123	330	25	1400	B
	240	200	2HP-4P	322	315	38	124	123	360	25	1400	C
	140	120	2HP-4P	322	315	38	124	123	360	25	1400	C
	115	100	2HP-4P	322	315	38	124	123	360	25	1400	C



- 随机所付之机片为双翼平桨两层,或三翼螺旋桨一层,表面酸洗处理
- 接液部份之棒叶材质为 SUS304 其他特殊材质或包涂装, 请另行洽询

- The impellers attached to this machine are two layers of bi-wing paddles, or one layer of three-propeller its surface has dealt with acid process.
- The stick and blade of liquid contact part are made from SUS304, other special materials or coverings, please contact us.