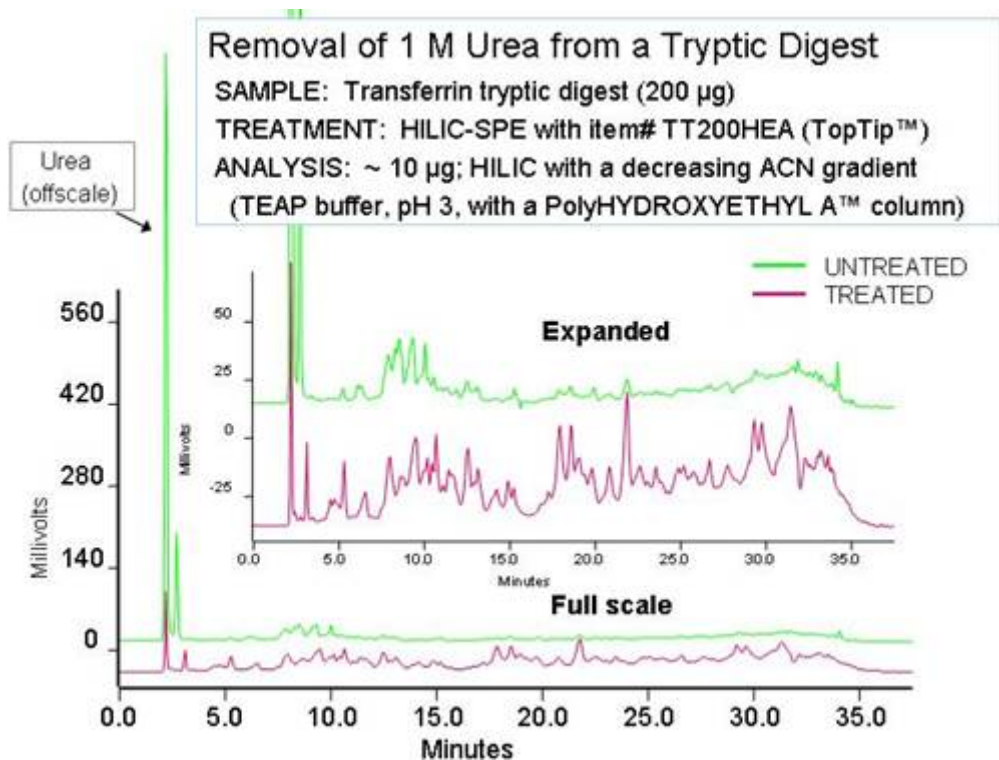


Solid Phase Extraction

PolyLC offers all of its materials in cartridges for SPE as well as additional materials:

NuTips™: Available for samples 1-10 μ l and 10-200 μ l. The stationary phase is embedded in the wall with an open channel in the center. Sample is pipetted up and down to promote solute capture. These are convenient for desalting or quick sampling and spotting on a MALDI target. However, if the amount of peptide being sampled greatly exceeds the capacity of the NuTip (or any other SPE cartridge, for that matter), then the peptides that bind with highest affinity will be present in sufficient quantity to displace the others. Result: A nonrepresentative sampling of the mixture.

TopTips™: Available for samples 1-10, 10-200, and 200-1000 μ l. Their capacity is much greater than that of NuTips or other microscale SPE cartridges. This permits the entire sample to be bound and cleaned up, a safe way to avoid selective loss of components. The following figure shows the removal of 1-2 M urea from a tryptic digest with a HILIC TopTip.



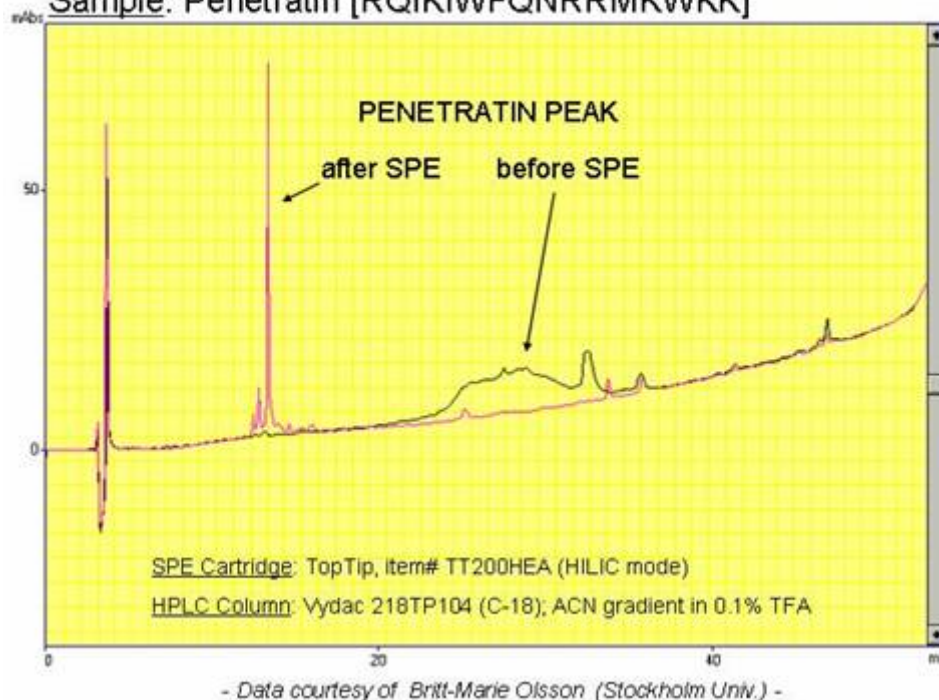
北京金欧亚科技发展有限公司

北京崇文区左安门内大街8号伟图大厦301室 PC: 100061
Tel: 010-67136152/67100708 Fax: 010-67114016/67113925
<http://www.chromatogr.com> E-mail: china.hplc@163.com

HILIC NuTips and TopTips can also remove detergents from protein and peptide samples.

Removal of 8.6% SDS from Peptide by SPE-HILIC

Sample: Penetratin [RQIKIWFQNRRMKWKK]



SPE cartridges: These are for samples up to 5 ml or larger in size. Available in closed cartridges with luer fittings or in packed syringe barrels.

北京金欧亚科技发展有限公司

北京崇文区左安门内大街8号伟图大厦301室 PC: 100061
Tel: 010-67136152/67100708 Fax: 010-67114016/67113925
<http://www.chromatogr.com> E-mail: china.hplc@163.com