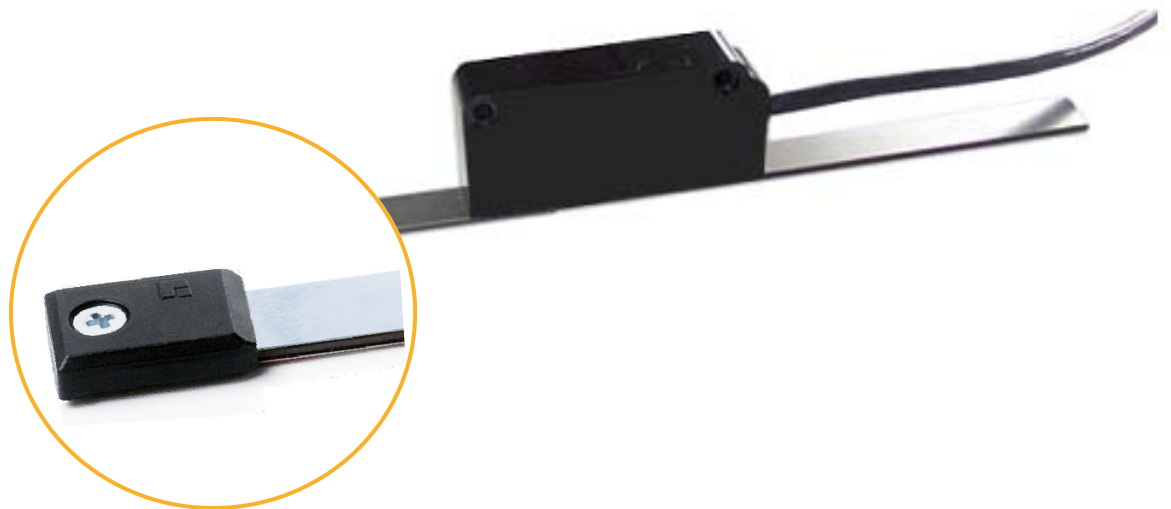


# SMIX



Magnetic Length Measuring System

- 0,01 mm resolution
- Push - Pull outputs for MIN/MAX limits

## **SMIX** Magnetic Length Measuring System with 0,01 mm resolution

**General:** The series SMIX is a Magnetic Length Measuring System. The sensor technology and translator are both placed in housing. The magnetic tape is fixed to a plane base with the provided sticky tape. The SMIX can be installed up to a maximum distance of 2,0 mm.

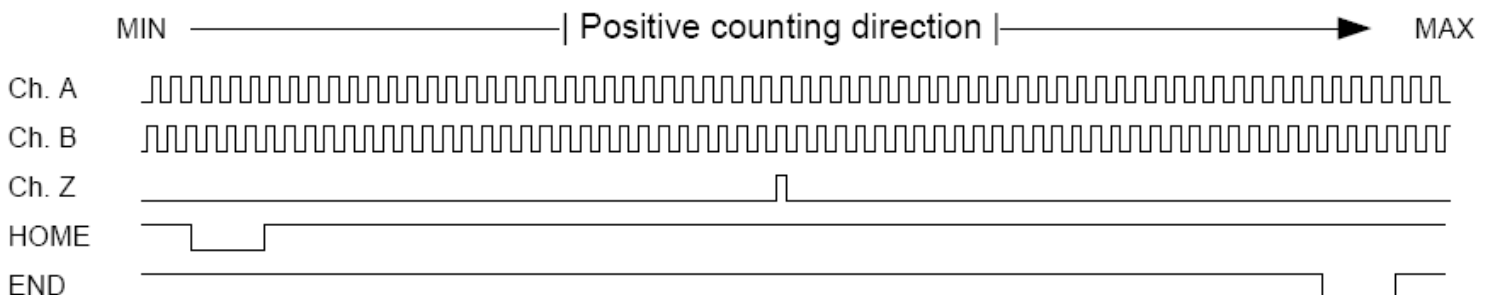
Signal outputs: A, A', B, B', Z, Z' and two push—pull outputs for Min/Max limits.

### **Product features:**

- Direct contactless measurement
- The distance between sensor and measuring tape can vary between 0,1 and 2,0 mm
- Measuring lengths up to 32 m
- High resolution of 0,01 mm
- Repeating accuracy +/- 0,01 mm
- Very robust against pollution



### **Pulse diagram**



-> Supply-Voltage: 24 V (10-30 V)

-> Resolution: 10 )m

-> Channel A, /A, B, /B, Z, /Z: 24V-Push-Pull (HTL)

-> Limit Switches: 24V-Push-Pull (HTL) Inverted Logic: active „Low“



**Accessories:**

MB20-50-10-2-R-SNXXX

Magnetic tape for SMIX

Magnetic tape fixation pieces (10 mm)

Additional fixation in the radial and linear area to protect the tape ends

