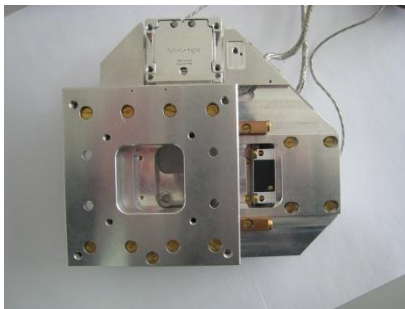
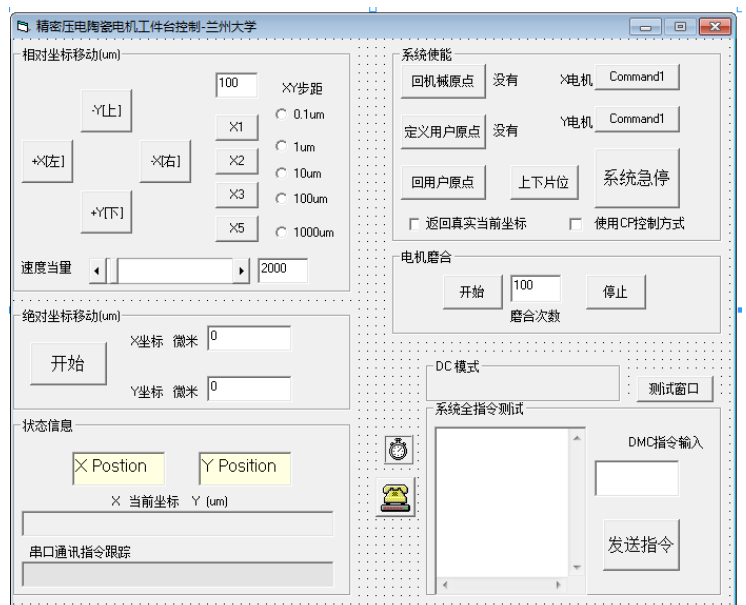


Open Compact Table

KDT 105-50-1M



平台实物照片

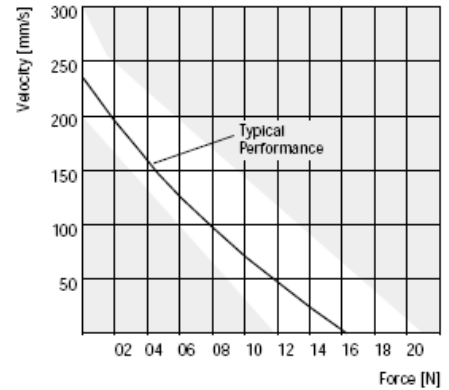


平台控制系统及软件照片

Technical Data



		KDT 105-50-LM	
Travel	[mm]	50	
Max. traversing rate	[mm/s]	250	
		micro-step-performance (Minimum step size of the motor 5 nm)	
Max. acceleration	[m/s ²]	10	
Reproducibility	[μm]	≤ 0.3	
Positioning accuracy - over total length	[μm]	± 1	
Max. deviation from straightness / flatness			
Linear compensation - over total length	[μm]	± 0.5	
Clear aperture	[mm]	40	
Permissible loads	Fx	[N]	15
	Fy	[N]	30
	Fz	[N]	50
Backlash	[μm]	0	
Weight	[kg]	1.6	



平台技术指标

Specification

■ Incremental linear encoder

Measuring system type LIA20
 Material measure singleflex-measuring tape
 Graduation 20 μm
 Accuracy class ± 1 μm
 Output signal rectangular signal RS422
 Evaluation 4fold evaluation and 50fold interpolator
 Resolution 0.1 μm

■ Piezo linear motor
 Static Holding Force

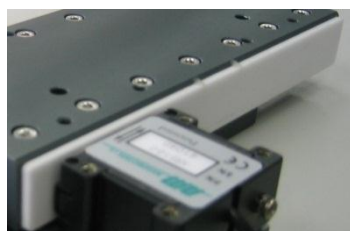
- Lift limitation
- Guideways
- Casing

HR-4

16 N
 no magnetic fields, no heat

fixed stops
 backlash-free preloaded precision cross roller guideways
 warp-proof, anodized black aluminum alloy

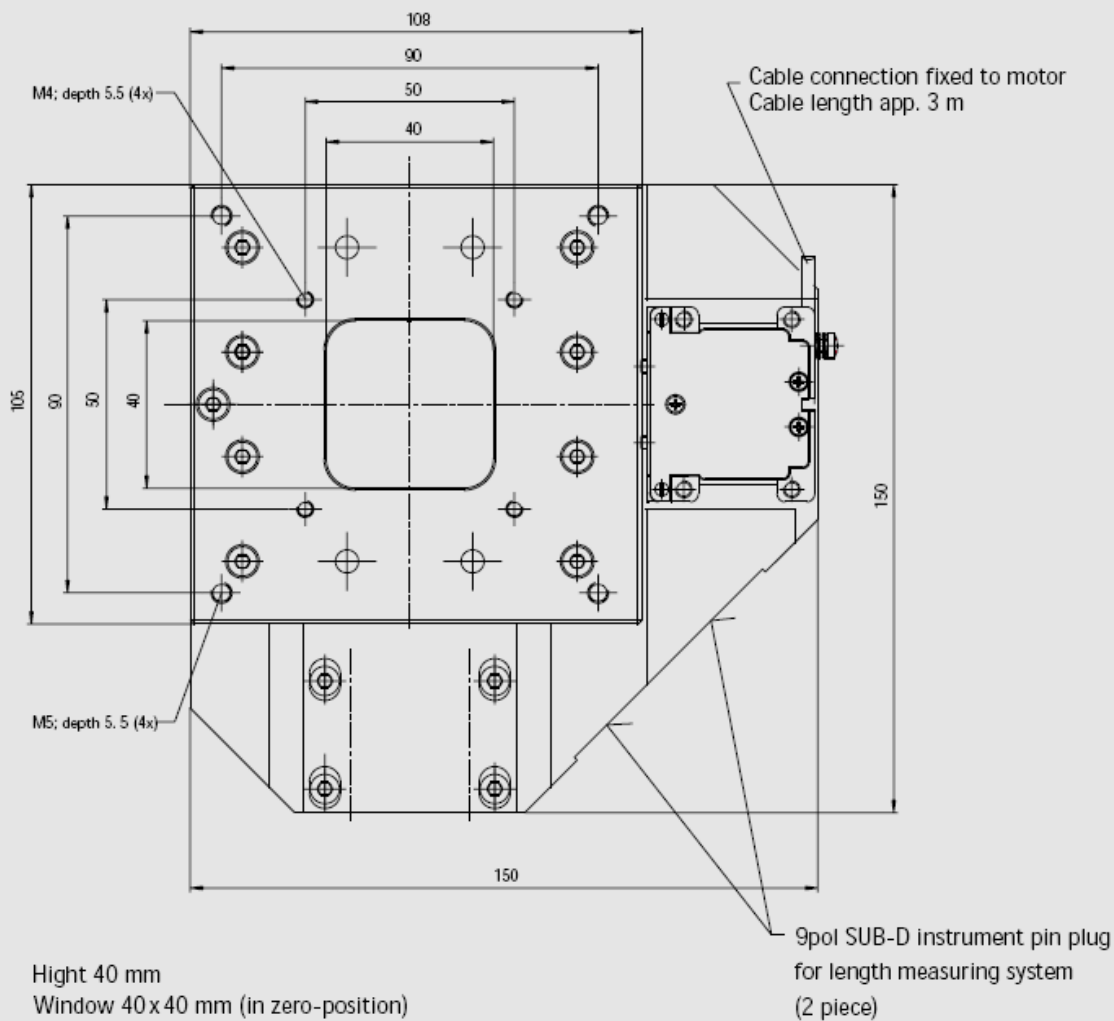
平台规格指标



平台使用部件（控制卡+驱动器+压电陶瓷马达+陶瓷条+光栅尺）

Dimensions

View from top (identically from bottom)



平台机械尺寸