



Analytical Industries Inc.
Advanced Instruments Inc.

Palm

产品简介：

分析：0-100% 氧气

是用于测量和显示氧气呼吸气体混合物的浓度

应用范围：麻醉，呼吸治疗，新生儿与小儿孵化器和防护罩，氧气疗法等
采用的电化学燃料电池型氧传感器

产品特点：

可手握仪器测试，小巧轻便

彩色屏幕显示，手机菜单操作，简单易用

用于连续、快速、可靠和准确的监测环境中的氧气浓度

背光液晶显示屏

分辨率：0.1 %

微处理器从键盘控制，并提供系统诊断

精度 在恒定条件下，<FS的2%

分析 0-100% 氧气

报警 无

补偿 温度

连线 1x16mm螺纹或O形圈转向器

控制 软触摸按键为开/关和CAL

尺寸 2.72" x 4.1" x 1.35"，重量7盎司（196公克）

显示 3位LCD1.1" x .625"；分辨率0.1%的O2

湿度 非冷凝0-95%相对湿度

线性度 在恒定条件下+1%

电池 1.5VAA碱性电池；13,000小时的使用

响应时间 90%最终FS读数在10秒

灵敏度 FS的范围<0.5%

传感器寿命 32个月

存储温度 -20o至60oC（-4 ° F至140 ° F）

温度范围 5o至45oC（41oF至113 ° F）

预热时间 无

保修期 分析仪12个月，传感器12个月（任何应用程序）

NEW



Palm O₂ **Oxygen Analyzer**

Easy user interface . . . one touch controls

Simple to use . . . accurate reliable results

One touch calibration . . . 100% O₂ or air

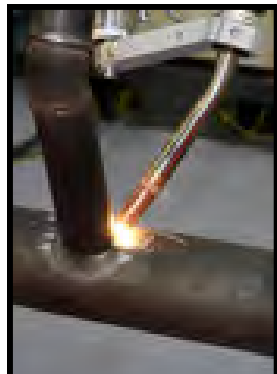
Long battery life . . . 13,000 hrs of use

Advanced sensor technology

Internal or external sensor configurations

State of the art electronics

Certified ISO 9001:2008 QA System



ISO 9001:2008 Certified
INTERTEK Certificate No. 485





Analytical Industries Inc.
Advanced Instruments Inc.

Palm O₂ **NEW** Oxygen Analyzer

采用的电化学燃料电池型氧传感器



Applications

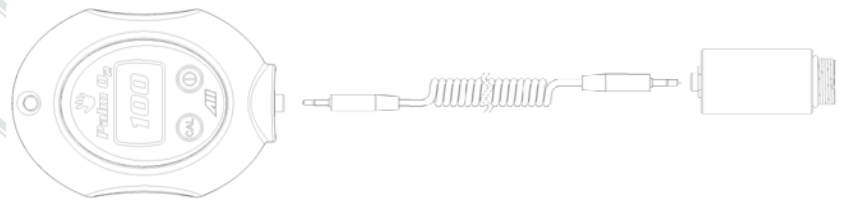
- Personnel Safety
- Area Monitoring
- O₂ Deficiency Confined Spaces
- Check Breathing Air Tanks
- Confirm O₂ Levels Prior to Weld

For added flexibility select from the standard configuration with integral oxygen sensor or the optional remote sensor . . .

either way there is a variety of sampling options available to meet your need.

Optional Accessories

Palm O₂ R Oxygen Analyzer, Remote Oxygen Sensor



Oxygen Analyzer with A-3654 Remote Sensor Connector

CABL-1009 Cable 6 ft. Phone Plug with Lock Nut

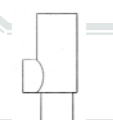
AII-11-75-PO2R I/W Oxygen Sensor



A-3388 Adapter, Dome to Sensor



FITN-1112-1 Flow Diverter



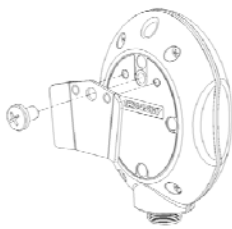
FITN-1009 Tee Adapter

HRWR-1157 Screwdriver

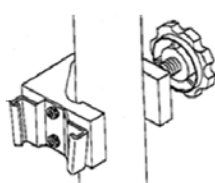
HRWR-1158 Lanyard

Temporary Mounting in a Fixed Location:

A-3657-1 Dovetail Mounting Kit



A-3657 Dovetail Bracket
HRWR-1162 Screw 1/4-20 x 3/8"



HRWR-1075 Dovetail Clamp Pole or Shelf

A-3692 Hand Pump Kit



A-3674 Adapter 5/16" Tube to Sensor

PUMP-1020 Pump, Hand

TUBE-1020 Tubing, 5/16" x 3' (2x pcs)



A-3676 Adapter, 1/8" Tube to Sensor



TUBE-1018 Tubing, 1/8" x 3'



A-3609 Adapter, Dome to 1/8" Tube