



» CORE DRILLING & EDGE MILLING MACHINES



Core drilling machines

Hand core drilling machine RSH 1300

The high performance motor, optimally adjustable rotational speed and the handy design ensure perfect drilling results. The RUKO hand core drilling machine RSH1300 is ideal for fast and flexible use.

Magnetic-stand drilling machines RS120, RS125e, RS130e, RS140e

The new generation of RUKO magnetic-stand drilling machines is supplied as standard with fine adjustment and a strong magnet with 18.000 N holding force. The ergonomic design and the integrated coolant bottle with intelligent coolant supply facilitate the handling and allow a precise work.

Edge milling machine

Edge milling machine RKF10

The new RUKO edge milling machine is used for chamfering and rounding off edges, as well as for the removal of burrs and sharp corners. The speed can be adapted to the material to be processed. The support surface is depth adjustable. The 45° tool holder for triangular TC indexable cutting inserts allows a quick and easy chamfering. The 2 additional guide rollers ensure a quieter, more stable running.





The new RUKO magnetic-stand drilling machines RS120 - RS140e

1. Standard fine adjustment stabilised (Displaceability: ± 5 mm / Pivoting range: $\pm 5^\circ$).
2. Magnet with 18.000 N holding force and larger contact surface in all four models.
3. Integrated coolant bottle with intelligent coolant supply (filling quantity 750 ml).
4. Fast and simple side change of the star grip.
5. Better handling due to ergonomic carrying handle.



Hand core drilling machine RSH 1300

Technical data:

Total Power consumption:	1.300 Watt
Power output:	800 Watt
Nominal speed:	0 - 2000 r.p.m.
Idling speed:	3400 r.p.m.
Weight:	3,4 kg
Adapter:	flexible $\frac{5}{8}$ " x 16

Infinitely variable speed control:	✓
Right-left-handed rotation:	✓
Torque slipping clutch:	✓
Electronic overload protection:	✓
Restart inhibit:	✓

Drilling range:	
Tungsten carbide hole saws:	Ø 15,0 - 30,0 mm Cutting depth 20,0 mm
Multigrade hole saws MHS:	Ø 15,0 - 30,0 mm Cutting depth 20,0 mm
HSS-G hole saws:	Ø 12,0 - 60,0 mm Cutting depth 2,5 mm
Tungsten carbide hole saws, shallow cut:	Ø 16,0 - 60,0 mm Cutting depth 4,0 mm
Flow drill:	M4 - M8
Threaded cutting:	up to M12
Input voltage:	220 - 240 Volt
Conformity with:	VDE, CEE

Accessories:

- 1 Flexible mounting $\frac{5}{8}$ " x 16, article no. 108 323
- 1 Cutting spray 200 ml, article no. 101 025
- 1 Plastic tool case

Article no.: 108 1300 RSH





The RSH 1300 in summary:

The high performance motor, optimally adjustable rotational speed and the handy design ensure perfect drilling results. The RUKO hand core drilling machine RSH 1300 is ideal for fast and flexible use.

① **Infinitely variable speed control**

Due to the adjustable speed controller, the cutting speed can be adjusted to suit specific operations.

② **High performance motor**

For fast work progress and drilling up to Ø 60,0 mm.

③ **Right-/ left-handed rotation**

Reversible for threaded cutters up to M 12.

④ **Torque slipping clutch**

Protects users and hand core drilling machine by cutting the driven side from the driving side in case of overload.

⑤ **Electronic overload protection**

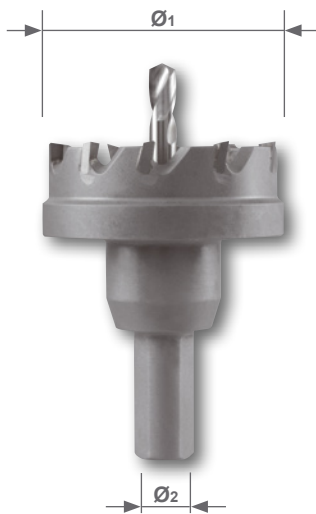
Protects the hand core drilling machine from damage.

⑥ **Restart inhibit**

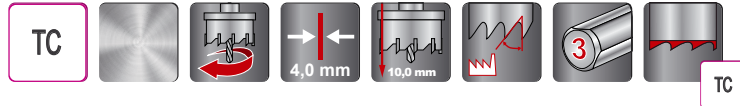
Prevents the automatic restart of the machine after overloading.



Accessories for hand core drilling machine RSH 1300



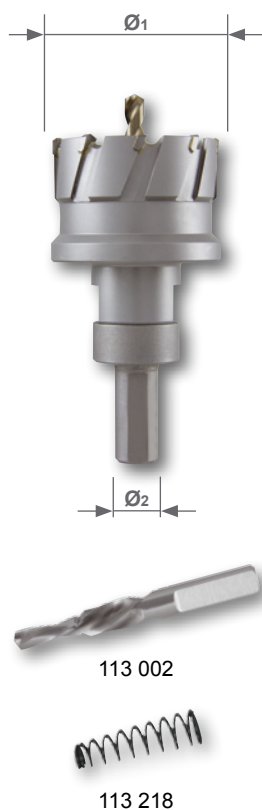
Tungsten carbide hole saws,
shallow cut



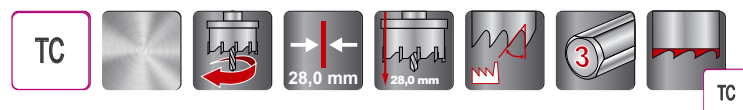
Packing unit: individual carton

Ø ₁ mm	Ø inch	Through dimensions M + PG	Tube dimensions inch	Ø ₂ mm	Article no.
16,0	5/8	~ PG 9		10,0	105 016 -1
16,5		M 16		10,0	105 165 -1
17,0				10,0	105 017 -1
18,0				10,0	105 018 -1
18,6		PG 11		10,0	105 186 -1
19,0	3/4		3/8	10,0	105 019 -1
20,0				10,0	105 020 -1
20,4	13/16	M 20 / PG 13,5		10,0	105 204 -1
21,0				10,0	105 021 -1
22,0			1/2	10,0	105 022 -1
22,5	7/8	PG 16		10,0	105 225 -1
23,0				10,0	105 023 -1
24,0	15/16			10,0	105 024 -1
25,0				10,0	105 025 -1
25,5	1	M 25		10,0	105 255 -1
26,0				10,0	105 026 -1
27,0	1 1/16			10,0	105 027 -1
28,0	1 3/32			10,0	105 028 -1
28,3	1 1/8	PG 21		10,0	105 283 -1
29,0			3/4	10,0	105 029 -1
30,0	1 3/16			10,0	105 030 -1
32,0	1 1/4			10,0	105 032 -1
32,5		M 32		10,0	105 325 -1
34,0				10,0	105 034 -1
35,0	1 3/8		1	10,0	105 035 -1
36,0				10,0	105 036 -1
37,0	1 7/16	PG 29		10,0	105 037 -1
38,0	1 1/2			10,0	105 038 -1
40,0	1 9/16			10,0	105 040 -1
40,5		M 40		10,0	105 405 -1
41,0	1 5/8			10,0	105 041 -1
42,0				10,0	105 042 -1
43,0	1 11/16			10,0	105 043 -1
44,0	1 3/4		1 1/4	10,0	105 044 -1
45,0				10,0	105 045 -1
48,0				10,0	105 048 -1
50,0	1 31/32			10,0	105 050 -1
50,5		M 50		10,0	105 505 -1
51,0	2		1 1/2	13,0	105 051 -1
52,0				13,0	105 052 -1
54,0	2 1/8	PG 42		13,0	105 054 -1
55,0				13,0	105 055 -1
57,0	2 1/4			13,0	105 057 -1
60,0	2 3/8	~ PG 48		13,0	105 060 -1





Tungsten carbide multigrade hole saws MHS

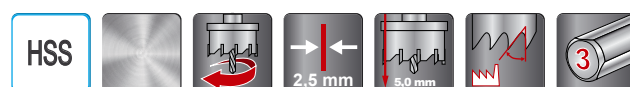


Packing unit: individual carton

Ø1 mm	Ø inch	Tube dimensions inch	Ø2 mm	Article no.
15,0			13,0 mm	113 015 -1
16,0	5/8		13,0 mm	113 016 -1
17,0			13,0 mm	113 017 -1
18,0			13,0 mm	113 018 -1
19,0	3/4	3/8	13,0 mm	113 019 -1
20,0			13,0 mm	113 020 -1
21,0			13,0 mm	113 021 -1
22,0	7/8	1/2	13,0 mm	113 022 -1
23,0			13,0 mm	113 023 -1
24,0	15/16		13,0 mm	113 024 -1
25,0	1		13,0 mm	113 025 -1
26,0			13,0 mm	113 026 -1
27,0	1 1/16		13,0 mm	113 027 -1
28,0	1 3/32		13,0 mm	113 028 -1
29,0	1 1/8	3/4	13,0 mm	113 029 -1
30,0	1 3/16		13,0 mm	113 030 -1



HSS-G hole saws



Packing unit: individual plastic pack

Ø1 mm	Ø inch	PG	Tube dimensions inch	Ø2 mm	Article no. HSS
12,0	15/32			8,0	128 012
13,0				8,0	128 013
14,0	9/16			8,0	128 014
15,0				10,0	128 015
16,0	5/8	PG 9		10,0	128 016
17,0				10,0	128 017
18,0				10,0	128 018
19,0	3/4		3/8	10,0	128 019
20,0				10,0	128 020
21,0				10,0	128 021
22,0			1/2	10,0	128 022
23,0				10,0	128 023
24,0	15/16			10,0	128 024
25,0				10,0	128 025
26,0				10,0	128 026
27,0	1 1/16			10,0	128 027
28,0	1 3/32			10,0	128 028
29,0			3/4	10,0	128 029
30,0	1 3/16			10,0	128 030
31,0	1 7/32			10,0	128 031
32,0	1 1/4			10,0	128 032

Ø1 mm	Ø inch	PG	Tube dimensions inch	Ø2 mm	Article no. HSS
33,0				10,0	128 033
34,0				10,0	128 034
35,0	1 3/8		1	10,0	128 035
36,0				10,0	128 036
37,0	1 7/16	PG 29		10,0	128 037
38,0	1 1/2			10,0	128 038
39,0				10,0	128 039
40,0	1 9/16			10,0	128 040
41,0	1 5/8			10,0	128 041
42,0				10,0	128 042
43,0	1 11/16			10,0	128 043
44,0	1 3/4		1 1/4	10,0	128 044
45,0				10,0	128 045
46,0				10,0	128 046
47,0	1 7/8	PG 36		10,0	128 047
48,0				10,0	128 048
49,0				10,0	128 049
50,0	1 31/32			10,0	128 050
55,0				12,0	128 055
60,0	2 3/8	PG 48		12,0	128 060



Forming taps DIN 2174 HSS Co 5-nitrated-VAP, ground



Forming taps with reinforced shank for through threads and bottoming.

Thread: metric, DIN ISO 13
Flanks: relief-ground

Packing unit: individual plastic pack

Nominal thread size M	Pitch mm	Thread core hole Ø ₁ mm	L ₁ mm	L ₂ mm	Ø ₂ mm	Article no. HSSE-Co 5 nitrated VAP
M 4	0,70	3,70	63,0	13,0	4,5	271 004 N
M 5	0,80	4,65	70,0	16,0	6,0	271 005 N
M 6	1,00	5,55	80,0	19,0	6,0	271 006 N
M 8	1,25	7,45	90,0	22,0	8,0	271 008 N

N TC flow drill with self centre tip

Heat is generated locally using rotational speed and friction heat, which plastifies the metallic materials of all kinds. Thus closed eyelets can be made in several basic material thickness within a few seconds without chips.



Packing unit: individual plastic pack

Nominal thread size M	Thread core hole Ø mm	Material thickness mm	Article no.
M 4	3,7	1,3	274 004
M 5	4,5	1,3	274 005
M 6	5,4	2,0	274 006
M 8	7,4	2,0	274 008



Comparison of technical data RS120 - RS 140e



Technical data	RS120	RS125e	RS130e	RS140e
Mag. clamping force:	18.000 N	18.000 N	18.000 N	18.000 N
Power consumption:	1.200 Watt	1.200 Watt	1.840 Watt	1.840 Watt
Gears:	2 gear	2 gear	2 gear	4 gear
Rotation speeds r.p.m.:	250 / 450 r.p.m.	100-250 / 180-450 r.p.m.	40-120 / 160-450 r.p.m.	40-120 / 70-180 / 160-450 / 300-700 r.p.m.
Electrical rotation controller:	No	Yes	Yes	Yes
Torque controller:	No	No	No	Yes
Right-left-handed rotation:	No	Yes	No	Yes
Height:	600,0 - 675,0 mm	600,0 - 675,0 mm	600,0 - 680,0 mm	600,0 - 680,0 mm
Width:	240 x 108,0 mm	240 x 108,0 mm	240 x 108,0 mm	240 x 108,0 mm
Weight:	23,0 kg	23,0 kg	26,0 kg	26,0 kg
Lift:	200,0 mm	200,0 mm	200,0 mm	200,0 mm
Adapter:	Morse taper MT 2	Morse taper MT 2	Morse taper MT 3	Morse taper MT 3
Core drills:	Ø 12,0 - 60,0 mm	Ø 12,0 - 60,0 mm	Ø 12,0 - 100,0 mm	Ø 12,0 - 100,0 mm
Drill chuck:	3,0 - 16,0 mm	3,0 - 16,0 mm	3,0 - 16,0 mm	3,0 - 16,0 mm
Twist drills DIN 338:	max. Ø 16,0 mm	max. Ø 16,0 mm	max. Ø 16,0 mm	max. Ø 16,0 mm
Twist drills DIN 1897:	max. Ø 16,0 mm	max. Ø 16,0 mm	max. Ø 16,0 mm	max. Ø 16,0 mm
Twist drills DIN 345:	max. Ø 23,0 mm	max. Ø 23,0 mm	max. Ø 31,5 mm	max. Ø 31,5 mm
Cutting depth core drills:	up to 110,0 mm	up to 110,0 mm	up to 110,0 mm	up to 110,0 mm
Input voltage:	220 – 240 V	220 – 240 V	220 – 240 V	220 – 240 V
Conformity with:	VDE, CEE	VDE, CEE	VDE, CEE	VDE, CEE
Moveable field:	+/- 5,0 mm	+/- 5,0 mm	+/- 5,0 mm	+/- 5,0 mm
Turn field:	+/- 5°	+/- 5°	+/- 5°	+/- 5°
Thread cutting:	No	Yes	No	Yes

Accessories:	RS120	RS125e	RS130e	RS140e
	Plastic tool case + trolley	Plastic tool case + trolley	Plastic tool case + trolley	Plastic tool case + trolley
	Drill drift	Drill drift	Drill drift	Drill drift
	Safety belt	Safety belt	Safety belt	Safety belt
	Drill chuck, Art. no. 108 117 3,0 - 16,0 mm	Drill chuck, Art. no. 108 117 3,0 - 16,0 mm	Drill chuck, Art. no. 108 117 3,0 - 16,0 mm	Drill chuck, Art. no. 108 117 3,0 - 16,0 mm
	Coolant bottle + sprayer	Coolant bottle + sprayer	Coolant bottle + sprayer	Coolant bottle + sprayer
	Protective work gloves	Protective work gloves	Protective work gloves	Protective work gloves
	Safety goggles	Safety goggles	Safety goggles	Safety goggles
	Ear protectors	Ear protectors	Ear protectors	Ear protectors
	EasyLock, Art. no. 108 317	EasyLock, Art. no. 108 317	EasyLock, Art. no. 108 318	EasyLock, Art. no. 108 318
Article no.	108 0120 RS	108 0125 RS	108 0130 RS	108 0140 RS

Comparison of technical data RS5e - RS25e



Technical data	RS5e	RS10	RS25e
Mag. clamping force:	10.000 N	10.000 N	13.000 N
Power consumption:	1.200 Watt	1.120 Watt	1.200 Watt
Gears:	1 gear	1 gear	2 gear
Rotation speeds r.p.m.:	140 - 350 r.p.m.	450 r.p.m.	100-250 / 180-450 r.p.m.
Electrical rotation controller:	Yes	No	Yes
Torque controller:	No	No	No
Right-left-handed rotation:	No	No	Yes
Height:	182,0 mm	413,0 - 548,0 mm	408,0 - 598,0 mm
Width:	160,0 x 80,0 mm	160,0 x 80,0 mm	190,0 x 90,0 mm
Weight:	11,0 kg	13,0 kg	18,0 kg
Lift:	38,0 mm	135,0 mm	190,0 mm
Adapter:	Weldon shank 19,0 mm	Weldon shank 19,0 mm	Morse taper MT 2
Core drills:	Ø 12,0 - 35,0 mm	Ø 12,0 - 35,0 mm	Ø 12,0 - 60,0 mm
Drill chuck:	–	1,0 - 13,0 mm	3,0 - 16,0 mm
Twist drills DIN 338:	–	max. Ø 10,0 mm	max. Ø 13,0 mm
Twist drills DIN 1897:	–	max. Ø 13,0 mm	max. Ø 16,0 mm
Twist drills DIN 345:	–	–	max. Ø 20,0 mm
Cutting depth core drills:	up to 30,0 mm	up to 30,0 mm	up to 30,0 / 55,0 mm
Input voltage:	220 – 240 V	220 – 240 V	220 – 240 V
Conformity with:	VDE, CEE	VDE, CEE	VDE, CEE
Moveable field:	Nein	Nein	Nein
Turn field:	Nein	Nein	Nein
Thread cutting:	No	No	Yes

Accessories:	RS5e	RS10	RS25e
	Carrying bag incl. 2 plastic boxes	Plastic tool case	Plastic tool case
	Allen key	Allen key	Drill drift
	Safety belt	Safety belt	Safety belt
	–	Drill chuck, Art. no. 108 116 1,0 - 13,0 mm	Drill chuck, Art. no. 108 117 3,0 - 16,0 mm
	–	Drill chuck adapter	Spike cone MT 2 / B16
	Cooling bottle + holder	Cooling bottle + holder	Cooling bottle + holder
		Arbor holder, Art. no. 108 159	Arbor holder MT 2, Art. no. 108 315

Article no.	108 006 RS	108 001 RS	108 005 RS
-------------	------------	------------	------------



Magnetic-stand drilling machine RS120

Technical data:

Magnetic clamping force:	18.000 N
Total Power consumption:	1.200 Watt
Rotation speeds:	1st gear: 250 r.p.m. 2nd gear: 450 r.p.m.
Height:	600,0 - 675,0 mm
Lift:	200,0 mm
Length and width:	240,0 x 108,0 mm
Weight:	23,0 kg
Adapter:	Morse taper MT 2
Drill chuck:	3,0 - 16,0 mm

Drilling range:	
Twist drills (DIN 338):	max. Ø 16,0 mm
Twist drills (DIN 1897):	max. Ø 16,0 mm
Twist drills (DIN 345):	max. Ø 23,0 mm
Core drills:	Ø 12,0 - 60,0 mm
Cutting depth core drills:	up to 110,0 mm

Input voltage:	220 - 240 Volt
Conformity with:	VDE, CEE

Accessories:

- 1 Plastic shipping case + trolley
- 1 Drill drift
- 1 Safety belt
- 1 Drill chuck Ø 3,0 - 16,0 mm, article no. 108 117
- 1 Coolant bottle + sprayer
- 1 Protective work gloves
- 1 Safety goggles
- 1 Ear protectors
- 1 EasyLock article no. 108317

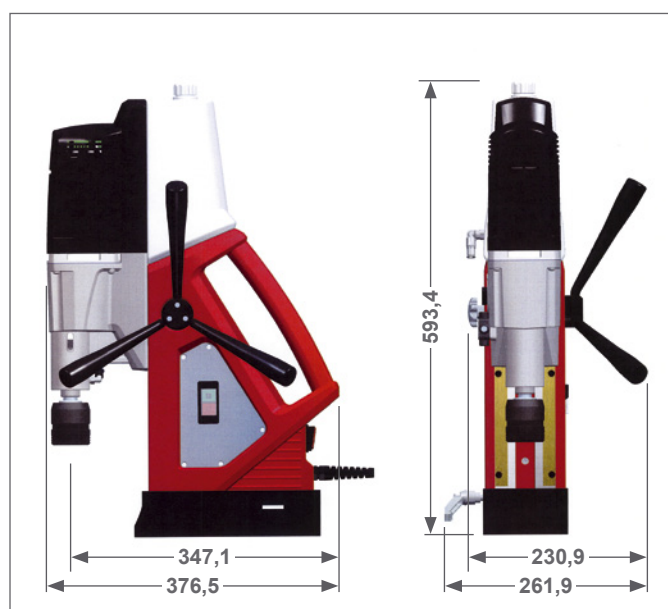
Article no.: 108 0120 RS





The RS120 in summary:

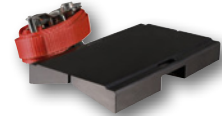
- ① **Extremely long service life due to internal cable routing**
Contamination or damage is no longer possible!
- ② **High-performance motor**
For core drills up to Ø 60,0 mm.
- ③ **2-speed gearbox**
with hardened precision gear teeth can be operated with ergonomic rotary switch.
- ④ Ergonomic positioning of the **motor and the solenoid switch.**
- ⑤ **Fine adjustment**
Displaceability: ± 5 mm
Pivoting range: $\pm 5^\circ$
- ⑥ **Magnet**
Strong magnet with 18,000 N clamping force.



RS 120



Vacuum plate Art. No. 108 113



Pipe clamping device 500 Art. No. 108 114

Arbor holder
MT 2
Art. no. 108 315



Arbor holder
EasyLock
Art. no. 108 317



Arbor holder
MT 2
Art. no. 108 104



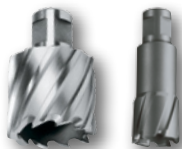
Spike cone
MT 2
Art. no. 108 120



Adapter
Art. no. 108 108



Core drills
HSS / HSS Co 5 / TC
with Weldon shank



Adapter
Art. no. 108 126



Twist drills
DIN 345 HSS
with MT2 shank



Drill chuck
Art. no. 108 117



TC
50,0 mm
Thread retainer



TC
50,0 mm
Quick IN-shank



HSSE-Co 5
50,0 mm
Quick IN-shank



HSS
30,0 mm
Quick IN-shank



Core drills
HSS / TC
with threaded retainer



Magnetic-stand drilling machine RS125e

Technical data:

Magnetic clamping force:	18.000 N
Total Power consumption:	1.200 Watt
Rotation speeds:	1st gear: 100 - 250 r.p.m. 2nd gear: 180 - 450 r.p.m.
Height:	600,0 - 675,0 mm
Lift:	200,0 mm
Length and width:	240,0 x 108,0 mm
Weight:	23,0 kg
Adapter:	Morse taper MT 2
Drill chuck:	3,0 - 16,0 mm

Drilling range:	
Twist drills (DIN 338):	max. Ø 16,0 mm
Twist drills (DIN 1897):	max. Ø 16,0 mm
Twist drills (DIN 345):	max. Ø 23,0 mm
Core drills:	Ø 12,0 - 60,0 mm
Cutting depth core drills:	up to 110,0 mm

Input voltage:	220 - 240 Volt
Conformity with:	VDE, CEE

Accessories:

- 1 Plastic shipping case + trolley
- 1 Drill drift
- 1 Safety belt
- 1 Drill chuck Ø 3,0 - 16,0 mm, article no. 108 117
- 1 Coolant bottle + sprayer
- 1 Protective work gloves
- 1 Safety goggles
- 1 Ear protectors
- 1 EasyLock article no. 108317

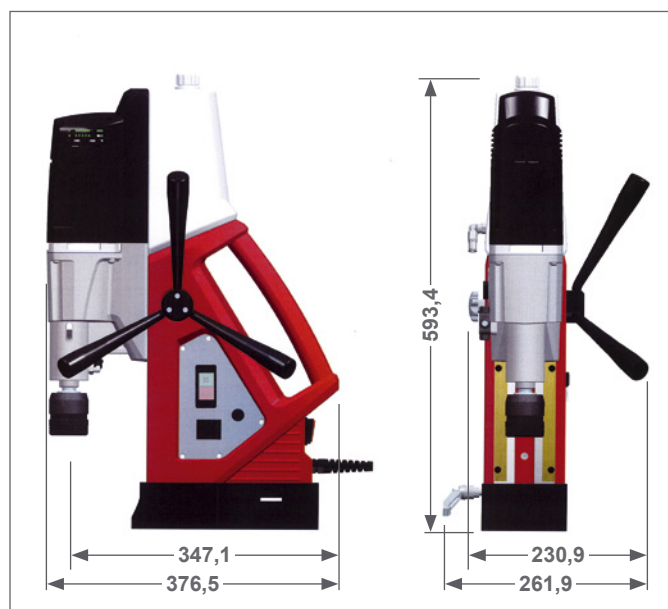
Article no.: 108 0125 RS





The RS125e in summary:

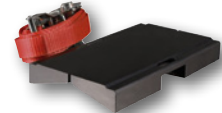
- ① **Extremely long service life due to internal cable routing**
Contamination or damage is no longer possible!
- ② **High-performance motor**
For core drills up to Ø 60,0 mm.
- ③ **2-speed gearbox**
with hardened precision gear teeth can be operated with ergonomic rotary switch.
- ④ Ergonomic positioning of the **motor and the solenoid switch.**
- ⑤ **Speed controller**
Continuously variable speed controller for optimum adjustment of cutting speed.
- ⑥ **Right-/ left-handed rotation**
Reversible for threaded cutters up to M 30.
- ⑦ **Fine adjustment**
Displaceability: ± 5 mm
Pivoting range: $\pm 5^\circ$
- ⑧ **Magnet**
Strong magnet with 18,000 N clamping force.



RS 125e



Vacuum plate Art. No. 108 113



Pipe clamping device 500 Art. No. 108 114

Arbor holder
MT 2
Art. no. 108 315



Arbor holder
EasyLock
Art. no. 108 317



Thread tap quick-acting holder
MT 2
Art. no. 108 163



Arbor holder
MT 2
Art. no. 108 104



Spike cone
MT 2
Art. no. 108 120



Core drills
HSS / HSS Co 5 / TC
with Weldon shank

Adapter
Art. no. 108 108



Adapter
Art. no. 108 126



Core drills
HSS / HSS Co 5 / TC
with Weldon shank



Twist drills
DIN 345 HSS
with MT2 shank



Core drills
HSS / TC
with threaded retainer



Drill chuck
Art. Nr. 108 117



Thread tap quick-change
insert **with** safety coupling
Art. no. 108 166



Thread tap quick-change
insert **without** safety coupling
Art. no. 108 180



TC
50,0 mm
Thread retainer



TC
50,0 mm
Quick IN-shank



HSSE-Co 5
50,0 mm
Quick IN-shank



HSS
30,0 mm
Quick IN-shank



Magnetic-stand drilling machine RS130e

Technical data:

Magnetic clamping force:	18.000 N
Total Power consumption:	1.840 Watt
Rotation speeds:	1st gear: 40 - 120 r.p.m. 2nd gear: 160 - 450 r.p.m.
Height:	600,0 - 680,0 mm
Lift:	200,0 mm
Length and width:	240,0 x 108,0 mm
Weight:	26,0 kg
Adapter:	Morse taper MT 3
Drill chuck:	3,0 - 16,0 mm

Drilling range:	
Twist drills (DIN 338):	max. Ø 16,0 mm
Twist drills (DIN 1897):	max. Ø 16,0 mm
Twist drills (DIN 345):	max. Ø 31,5 mm
Core drills:	Ø 12,0 - 100,0 mm
Cutting depth core drills:	up to 110,0 mm

Input voltage:	220 - 240 Volt
Conformity with:	VDE, CEE

Accessories:

- 1 Plastic shipping case + trolley
- 1 Drill drift
- 1 Safety belt
- 1 Drill chuck Ø 3,0 - 16,0 mm, article no. 108 117
- 1 Coolant bottle + sprayer
- 1 Protective work gloves
- 1 Safety goggles
- 1 Ear protectors
- 1 EasyLock article no. 108 318

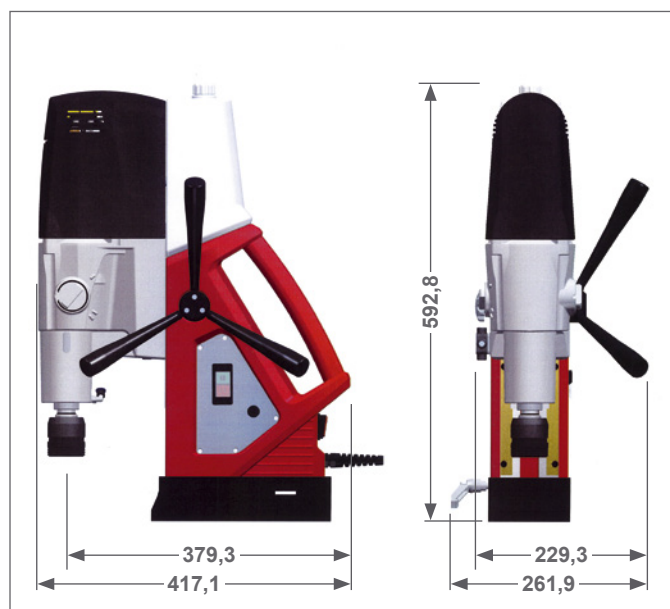
Article no.: 108 0130 RS





The RS130e in summary:

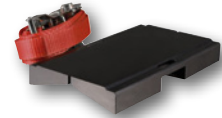
- ① **Extremely long service life due to internal cable routing**
Contamination or damage is no longer possible!
- ② **High-performance motor**
For core drills up to $\varnothing 100,0$ mm.
- ③ **2-speed gearbox**
With hardened precision gear teeth can be operated with ergonomic rotary switch.
- ④ **Ergonomic positioning of the motor and the solenoid switch.**
- ⑤ **Speed controller**
Continuously variable speed controller for optimum adjustment of cutting speed.
- ⑥ **Fine adjustment**
Displaceability: ± 5 mm
Pivoting range: $\pm 5^\circ$
- ⑦ **Magnet**
Strong magnet with 18,000 N clamping force.



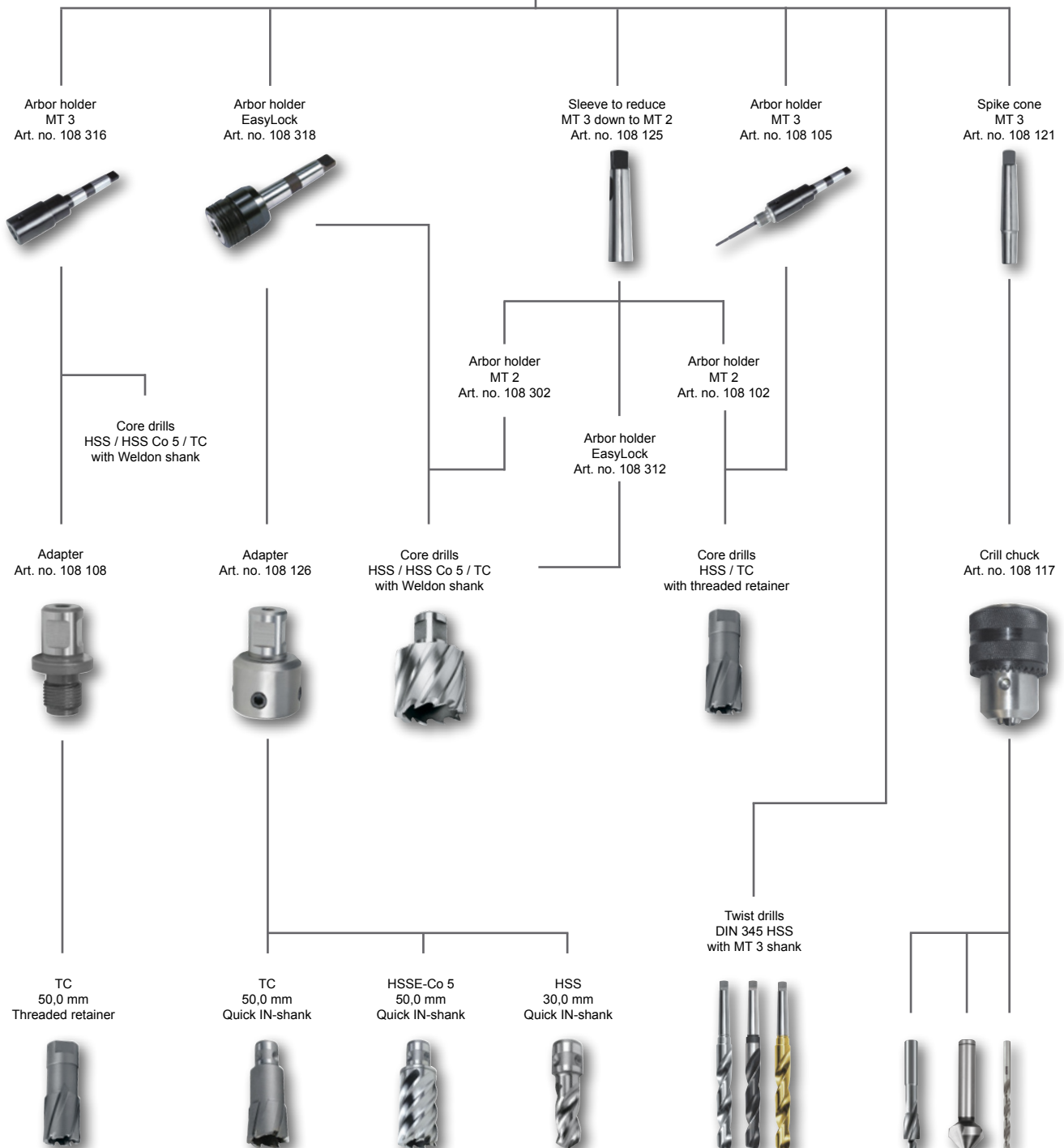
RS 130e



Vacuum plate Art. no. 108 113



Pipe clamping device 500 Art. no. 108 114



Magnetic-stand drilling machine RS140e

Technical data:

Magnetic clamping force:	18.000 N
Total Power consumption:	1.840 Watt
Rotation speeds:	1. gear: 40 - 120 r.p.m. 2. gear: 70 - 180 r.p.m. 3. gear: 160 - 450 r.p.m. 4. gear: 300 - 700 r.p.m.
Height:	600,0 - 680,0 mm
Lift:	200,0 mm
Length and width:	240,0 x 108,0 mm
Weight:	26,0 kg
Adapter:	Morse taper MT 3
Drill chuck:	3,0 - 16,0 mm

Drilling range:	
Twist drills (DIN 338):	max. Ø 16,0 mm
Twist drills (DIN 1897):	max. Ø 16,0 mm
Twist drills (DIN 345):	max. Ø 31,5 mm
Core drills:	Ø 12,0 - 100,0 mm
Cutting depth core drills:	up to 110,0 mm

Input voltage:	220 - 240 Volt
Conformity with:	VDE, CEE

Accessories:

- 1 Plastic shipping case + trolley
- 1 Drill drift
- 1 Safety belt
- 1 Drill chuck Ø 3,0 - 16,0 mm, article no. 108 117
- 1 Coolant bottle + sprayer
- 1 Protective work gloves
- 1 Safety goggles
- 1 Ear protectors
- 1 EasyLock article no. 108 318

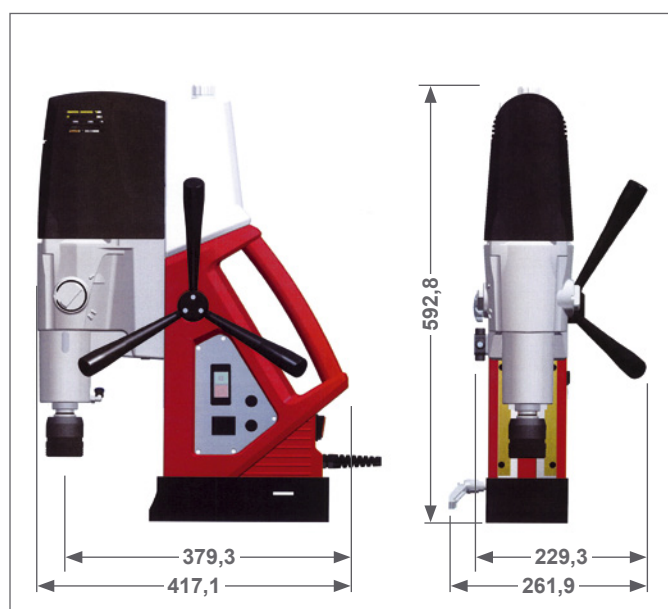
Article no.: 108 0140 RS





The RS140e in summary:

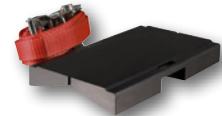
- ① **Extremely long service life due to internal cable routing**
Contamination or damage is no longer possible!
- ② **High-performance motor**
For core drills up to $\varnothing 100,0$ mm.
- ③ **4-speed gearbox**
With hardened precision gear teeth can be operated with ergonomic rotary switch.
- ④ **Ergonomic positioning of the motor and the solenoid switch.**
- ⑤ **Speed controller**
Continuously variable speed controller for optimum adjustment of cutting speed.
- ⑥ **Power controller**
Continuously variable Power-Controller for adjustment of torque.
- ⑦ **Right-/ left-handed rotation**
Reversible for threaded cutters up to M 30.
- ⑧ **Fine adjustment**
Displaceability: ± 5 mm
Pivoting range: $\pm 5^\circ$
- ⑨ **Magnet**
Strong magnet with 18,000 N holding force.



RS 140e



Vacuum plate Art. no. 108 113



Pipe clamping device 500 Art. no. 108 114

Arbor holder
MT 3
Art. no. 108 316



Arbor holder
EasyLock
Art. no. 108 318



Sleeve to reduce
MT 3 down to MT 2
Art. no. 108 125



Arbor holder
MT 3
Art. no. 108 105



Spike cone
MT 3
Art. no. 108 121



Core drills
HSS / HSS Co 5 / TC
with Weldon shank

Adapter
Art. no. 108 108



Adapter
Art. no. 108 126



Arbor holder
MT 2
Art. no. 108 302

Core drills
HSS / HSS Co 5 / TC
with Weldon shank



Arbor holder
EasyLock
Art. no. 108 312

Arbor holder
MT 2
Art. no. 108 102

Core drills
HSS / TC
with threaded retainer



Twist drills
DIN 345 HSS
with MT3 shank



Thread tap quick-acting
holder MT 3
Art. no. 108 160



Drill chuck
Art. no. 108 117



TC
50,0 mm
with threaded retainer



TC
50,0 mm
Quick IN-shank



HSSE-Co 5
50,0 mm
Quick IN-shank



HSS
30,0 mm
Quick IN-shank



Thread tap quick-change
insert **with** safety
coupling
Art. no. 108 166



Thread tap quick-change
insert **without** safety
coupling
Art. no. 108 180



Angle core drilling machine RS5e

Technical data:

Magnetic clamping force:	10.000 N
Total Power consumption:	1.200 Watt
Rotation speeds:	140 - 350 r.p.m.
Height:	182,0 mm
Lift:	38,0 mm
Length and width:	160,0 x 80,0 mm
Weight:	11,0 kg
Adapter:	Weldon shank 19,0 mm (3/4")

Drilling range:	
Core drills:	up to Ø 35,0 mm
Cutting depth core drills:	30,0 mm

Input voltage:	230 Volt
Conformity with:	VDE, CEE

Accessories per machine:

- 1 Carrying bag incl. 2 plastic boxes
- 1 Ejector pin Ø 6,35 x 70,0 mm article no. 108 344
- 1 Cooling bottle article no. 108 101
- 1 Safety belt
- 1 Operating instructions

Article no.: 108 006 RS

RS5e - Optimal for use in cramped spaces.

The magnetic-stand makes horizontal, vertical or overhead work possible. The machine's compact, light construction makes it extremely versatile and easily portable.

An electronic protective switch prevents inadvertent operation until the magnet has been switched on. The machine is equipped with a safety cut-off if the magnet fails due to outside influences.

Ideal for use in steel construction, industrial building, engineering, terotechnology, shipbuilding, bridge construction, crane building and assembly work in metalworking shops.





The RS5e in summary:

- despite its small overall height it is possible to use core drills with a cutting depth of 30,0 mm.
- the robust structure of the machine ensures good durability.
- the cast aluminium gearbox casing contributes to the light weight whilst ensuring the necessary stability.
- the conical gear wheels with helical tooth pattern, which are used in the angular gear, ensure smooth operation and good durability.
- the high precision bearings are generously sized so that the axial and radial forces can be securely absorbed by the work spindle with its 5 bearings.
- the precise spline duct of the work spindle guarantee continuing good load transmission to the drilling tool.
- the interior tool cooling system ensures optimal cooling of the tool and thus long service life.
- the engine speed electronics allow the user to adjust the speed to the tool diameter.

① Defined feed of cooling lubricant

Internal cooling guarantees a clean cut and long service life of the tools.

② High-performance motor

For core drills up to Ø 35,0 mm.

③ Magnet

10.000 N

④ Speed controller

Continuously variable speed controller for optimum adjustment of cutting speed.

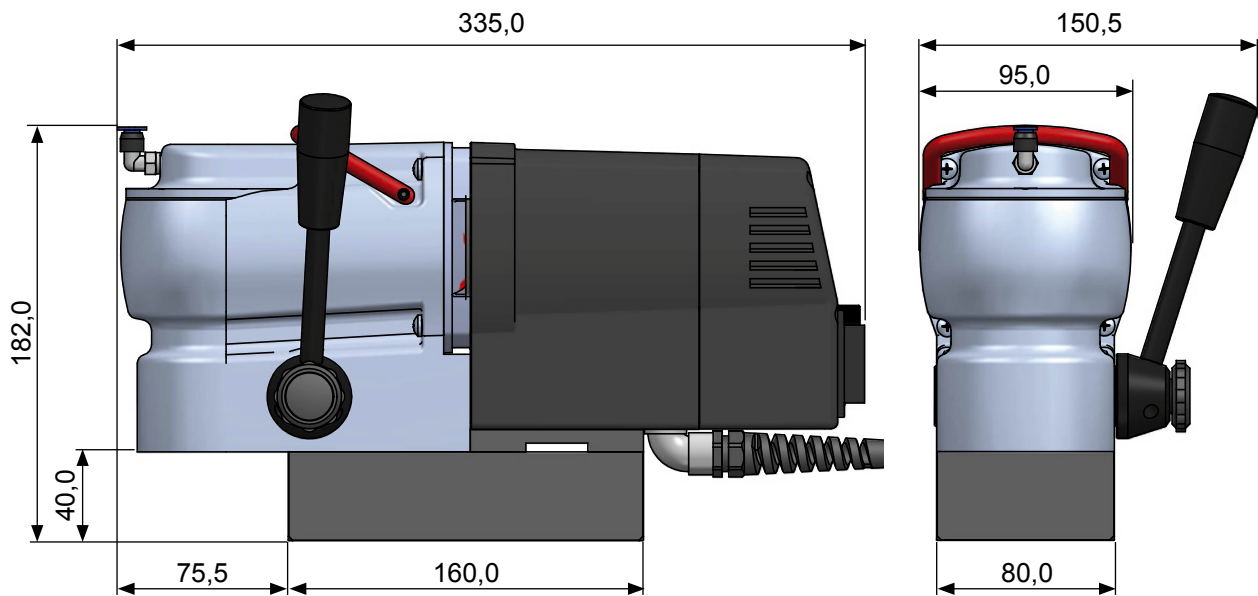
⑤ Handle

Suitable for left or right hand operation.

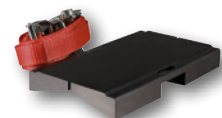
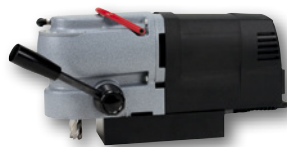
Handle can be mounted easily on the right or the left.



RS 5e



Vacuum plate Art. no. 108 113



Pipe clamping device 500 Art. no. 108 114

HSS
30,0 mm
Weldon shank



HSSE-Co 5
30,0 mm
Weldon shank



TC
25,0 mm
Weldon shank



HSS-TiAlN
30,0 mm
Weldon shank



HSS
30,0 mm
Weldon shank



Magnetic-stand drilling machine RS10

Technical data:

Magnetic clamping force:	10.000 N
Total Power consumption:	1.120 Watt
Rotation speeds:	450 r.p.m
Height:	413,0 - 548,0 mm
Lift:	135,0 mm
Length and width:	160,0 x 80,0 mm
Weight:	13,0 kg
Adapter:	Weldon shank 19,0 mm (3/4")
Transmission opening:	M14
Drill chuck:	1,0 - 13,0 mm with adapter

Drilling range:	
Twist drills (DIN 338):	max. Ø 10,0 mm
Twist drills (DIN 1897):	max. Ø 13,0 mm
Core drills:	up to Ø 35,0 mm
Cutting depth core drills:	30,0 mm

Input voltage:	230 V
Conformity with:	VDE, CEE

Accessories:

- 1 Plastic tool case
- 1 Drill chuck 1,0 - 13,0 mm article no. 108 116
- 1 Adapter for drill chuck article no. 108 115
- 1 Cooling bottle including holding device article no. 108 101
- 1 Allen key for Weldon shank
- 1 Safety belt
- 1 Operating instructions
- 1 With arbor article no. 108 159 for core drills with Weldon shank

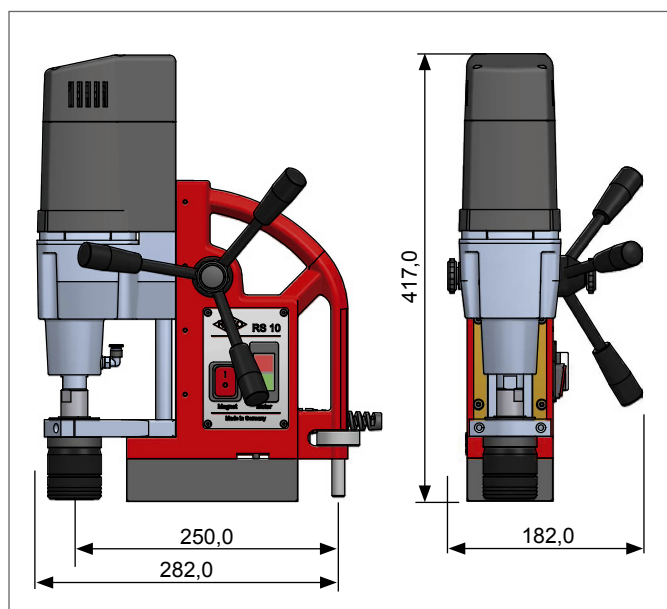
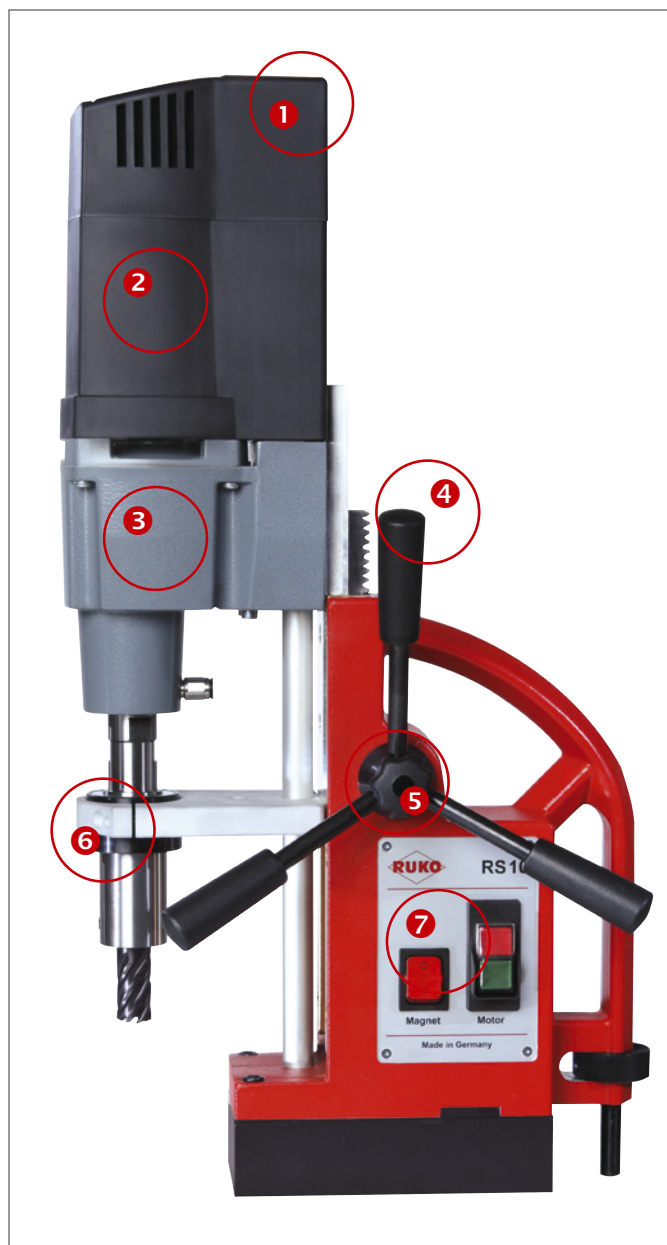
Article no.: 108 001 RS





The RS10 in summary:

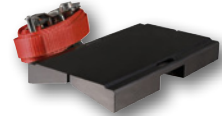
- ① **Very rugged plastic housing**
- ② **High-performance motor**
For core drills up to Ø 35,0 mm.
- ③ **Transmission**
Hardened precision gear teeth.
- ④ **Ergonomic handles**
For easy portability.
- ⑤ **Suitable for left or right hand operation**
Handle can be mounted easily on the right or the left.
- ⑥ **Removable device**
Enables the use of further arbors.
- ⑦ **Built-in electronics**
Impervious to supply voltage fluctuations and other disturbing influences.



RS 10



Vacuum plate Art. no. 108 113



Pipe clamping device 500 Art. no. 108 114

EasyLock RS 10
threaded retainer M14
for core drills
with Weldon shank



TC 50,0 mm
Threaded retainer



Adapter
Art. no. 108 108



Adapter
Art. no. 108 115



Drill chuck
Art. no. 108 116



Adapter
Art. no. 108 126



HSSE-Co 5
30,0 mm
Weldon shank



HSS-TiAlN
30,0 mm
Weldon shank



HSS
30,0 / 50,0 mm
Weldon shank



TC
50,0 mm
Weldon shank



TC
50,0 mm
Quick IN-shank



HSSE-Co 5
50,0 mm
Quick IN-shank



HSS
30,0 mm
Quick IN-shank



1.09

Magnetic-stand drilling machine RS25e

Technical data:

Magnetic clamping force:	13.000 N
Total Power consumption:	1.200 Watt
Rotation speeds:	1st gear: 100 - 250 r.p.m. 2nd gear: 180 - 450 r.p.m.
Height:	408,0 - 598,0 mm
Lift:	190,0 mm
Length and width:	190,0 x 90,0 mm
Weight:	18,0 kg
Adapter:	Morse taper MT 2
Drill chuck:	3,0 - 16,0 mm

Drilling range:	
Twist drills (DIN 338):	max. Ø 13,0 mm
Twist drills (DIN 1897):	max. Ø 16,0 mm
Twist drills (DIN 345):	max. Ø 20,0 mm
Core drills:	up to Ø 60,0 mm
Cutting depth core drills:	30,0 / 55,0 mm
Thread cutting:	up to M20

Input voltage:	230 V
Conformity with:	VDE, CEE

Accessories:

- 1 Plastic tool case
- 1 Drill drift
- 1 Drill chuck 3,0 - 16,0 mm article no. 108 117
- 1 Spike cone MT 2 / B16 article no. 108 120
- 1 Cooling bottle including holding device article no. 108 101
- 1 Safety belt
- 1 Operating instructions
- 1 With arbor article no. 108 315
for core drills with Weldon shank

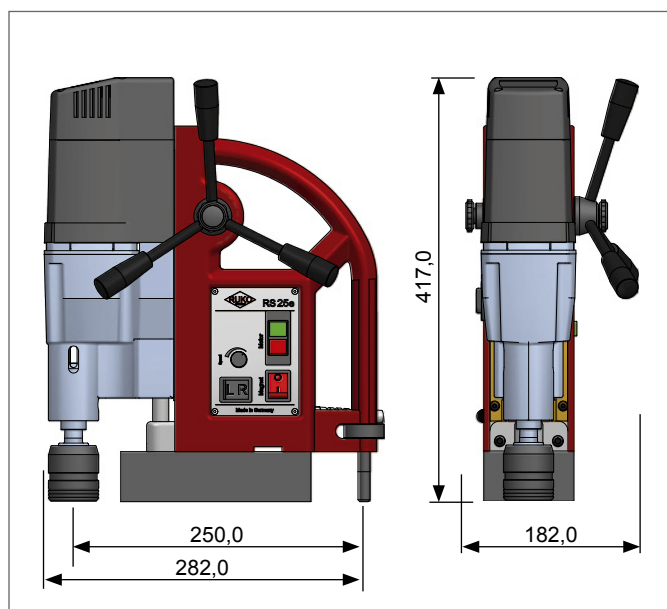
Article no.: 108 005 RS





The RS25e in summary:

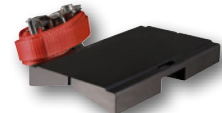
- ① **Extremely long service life due to internal cable routing**
Contamination or damage is no longer possible!
- ② **High-performance motor**
For core drills up to Ø 60,0 mm.
- ③ **Extra support**
The manually adjustable extra support boosts the attraction of the magnet.
- ④ **2-speed gearbox**
With hardened precision gear teeth can be operated with ergonomic rotary switch.
- ⑤ Ergonomic positioning of the **motor and the solenoid switch.**
- ⑥ **Speed controller**
Continuously variable speed controller for optimum adjustment of cutting speed.
- ⑦ **Right-/ left-handed rotation**
Reversible for threaded cutters up to M 20.



RS 25e



Vacuum plate Art. No. 108 113



Pipe clamping device 500 Art. No. 108 114

Arbor holder
MT 2
Art. no. 108 315



Arbor holder
EasyLock
Art. no. 108 317



Thread tap quick-acting holder
MT 2
Art. no. 108 163



Arbor holder
MT 2
Art. no. 108 104



Spike cone
MT 2
Art. no. 108 120



Core drills
HSS / HSS Co 5 / TC
with Weldon shank

Adapter
Art. no. 108 108



Adapter
Art. no. 108 126



Core drills
HSS / HSS Co 5 / TC
with Weldon shank



Twist drills
DIN 345 HSS
with MT2 shank



Core drills
HSS / TC
with threaded retainer



Drill chuck
Art. Nr. 108 117



Thread tap quick-change
insert **with** safety coupling
Art. no. 108 166



Thread tap quick-change
insert **without** safety coupling
Art. no. 108 180



TC
50,0 mm
Thread retainer



TC
50,0 mm
Quick IN-shank



HSSE-Co 5
50,0 mm
Quick IN-shank



HSS
30,0 mm
Quick IN-shank



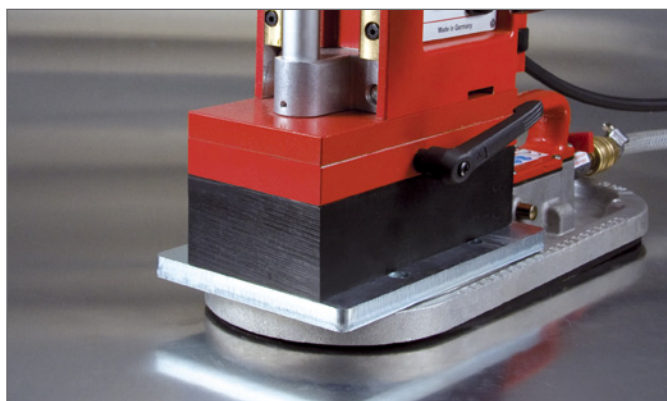
Vacuum clamping plate with compressed air connection for magnetic-stand drilling machine

Length: 410,0 mm (16")
 Width: 153,0 mm (6")
 Height: 100,0 mm (4")
 Weight: 4,6 kg (10.1 lbs)
 Pressure at work min.: 4,5 bar (65 PSI)
 Pressure at work max.: 8 bar (120 PSI)
 Air consumption: 0,06 m³
 2 CFM at 6 bar (85 PSI)

The vacuum clamping plate enables the use of magnetic stand drills on non-magnetic surfaces. In order to achieve the highest possible adhesive force, the application surface should be as free as possible of dust, scale, loose rust and filler. For safety reasons, the vacuum plate should only be used horizontally.

Packing unit:
individual carton

Description	Article no.
Vacuum clamping plate with compressed air connection for magnetic-stand drilling machine	108 113



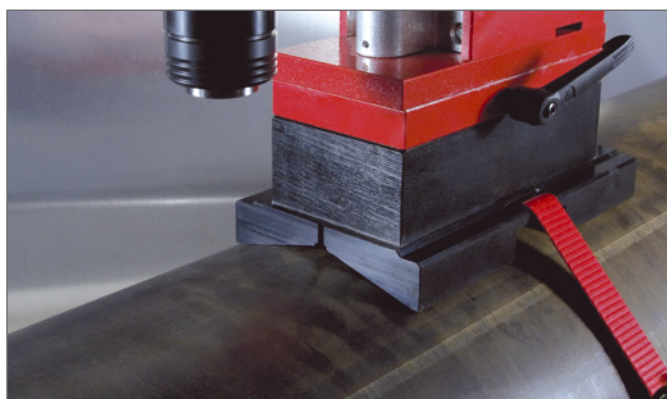
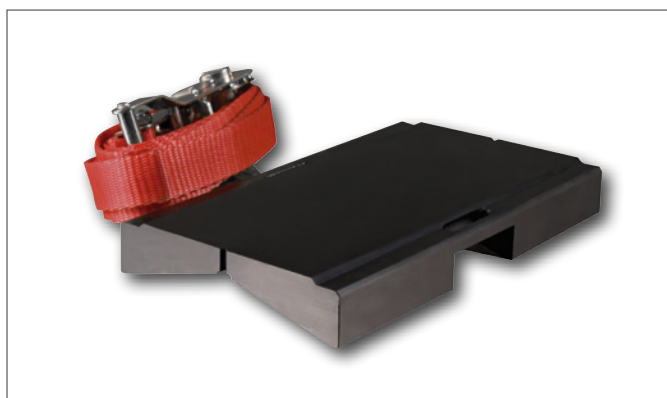
Pipe clamping device 500 for magnetic-stand drilling machine

Length: 220,0 mm (8.7")
 Width: 130,0 mm (5.1")
 Height: 28,0 mm (1.1")
 Safety belt: 2,0 m (78.7")
 Weight: 4,4 kg (9.7 lbs)
 Clamping agent: ratchet

The pipe clamping device enables the use of magnetic stand drills on pipes 50,0 to 500,0 mm in diameter. For safety reasons, the pipe clamping device should only be used horizontally.

Packing unit:
individual carton

Description	Article no.
Pipe clamping device 500 for magnetic-stand drilling machine	108 114



Automatic EasyLock quick-in arbor for core drills with Weldon shank

The EasyLock quick-in arbor enables a very quick tool change without additional tools.

Can be operated with one hand.

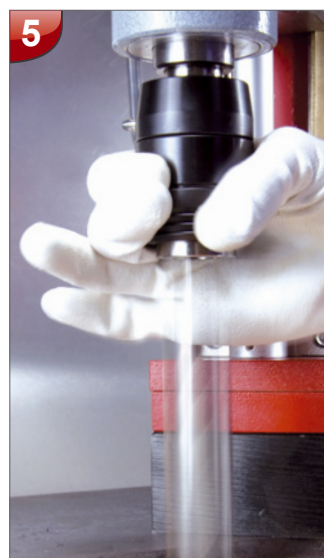
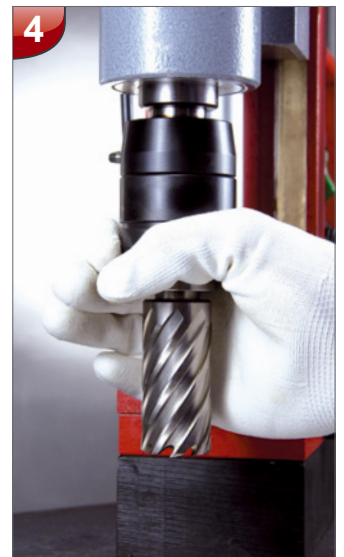
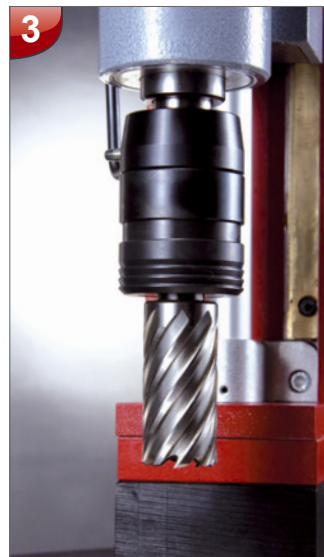
Picture 1: Push the ring spanner up until it sits tight.

Picture 2: Insert the core drill in the EasyLock.
This locks in with a loud "click."
The ring spanner snaps down.

Picture 3: The core drill is fixed securely in the EasyLock.
The machine is now ready for operation.

Picture 4: To release the core drill, push the ring spanner up.

Picture 5: Caution! The core drill will fall out of the EasyLock.



Automatic EasyLock quick-in arbor for core drills with Weldon shank ($\frac{3}{4}$ "

Packing unit: individual carton



108 314



108 312 / 108 313



108 317 / 108 318

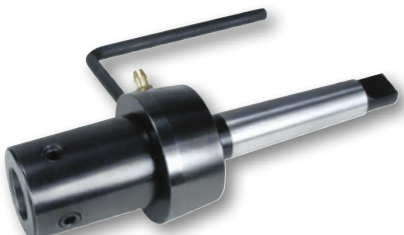
Description	Magnetic-stand drilling machine	Ø Core drills mm	Core drills cutting depth mm	Article no.
EasyLock with thread M 14 and interior cooling	RS10	10,0 - 35,0	30,0	108 314
EasyLock with morse taper no. 2 shank and cooling bottle article no. 108 101	RS20 / RS25e	10,0 - 60,0	30,0 / 50,0	108 312
EasyLock with morse taper no. 2 shank and interior cooling	RS20 / RS25e RS120 / RS125e	10,0 - 60,0	30,0 / 50,0	108 317
EasyLock with morse taper no. 3 shank and cooling bottle article no. 108 101	RS30e / RS40e	10,0 - 60,0	30,0 / 50,0	108 313
EasyLock with morse taper no. 3 shank and interior cooling	RS30e / RS40e RS130e / RS140e	10,0 - 60,0	30,0 / 50,0	108 318

Arbor holders for core drills with Weldon shank ($\frac{3}{4}$ "

Packing unit: individual carton



108 159



108 302 / 108 303



108 315 / 108 316

Description	Magnetic-stand drilling machine	Ø Core drills mm	Core drills cutting depth mm	Article no.
Arbor holder with thread M 14	RS10	10,0 - 35,0	30,0	108 159
Arbor holder with morse taper no. 2 shank and cooling bottle article no. 108 101	RS20 / RS25e	10,0 - 60,0	30,0 / 50,0	108 302
Arbor holder with morse taper no. 2 shank and interior cooling	RS20 / RS25e RS120 / RS125e	10,0 - 60,0	30,0 / 50,0	108 315
Arbor holder with morse taper no. 3 shank and cooling bottle article no. 108 101	RS30e / RS40e	10,0 - 60,0	30,0 / 50,0	108 303
Arbor holder with morse taper no. 3 shank and interior cooling	RS30e / RS40e RS130e / RS140e	10,0 - 60,0	30,0 / 50,0	108 316

Arbor holders for core drills with threaded retainer M 18 x 6 P1,5

Packing unit: individual carton

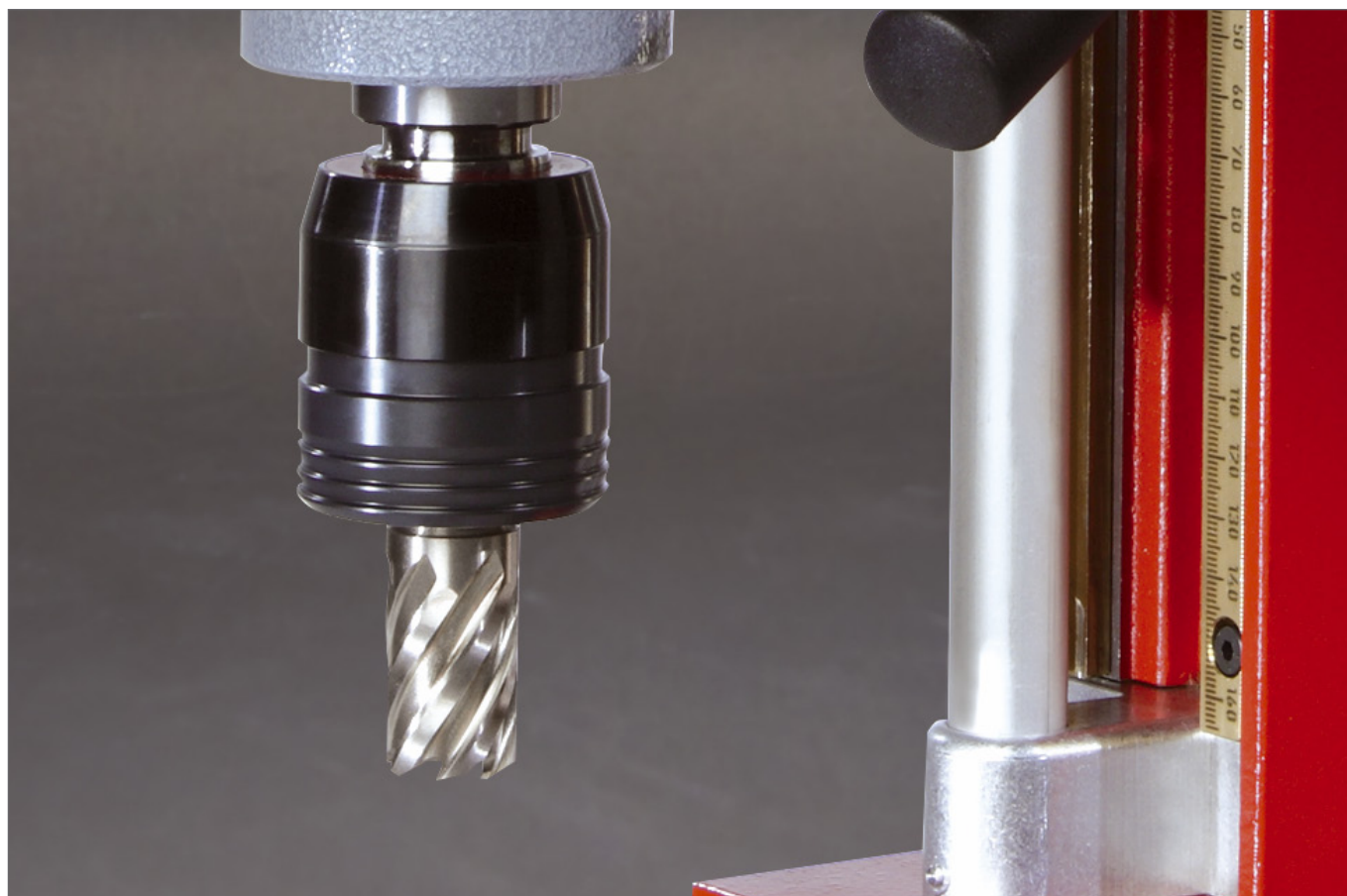


No. 108 102 / No. 108 103



No. 108 104 / No. 108 105

Description	Magnetic-stand drilling machine	Ø Core drills mm	Core drills cutting depth mm	Article no.
Arbor holder with morse taper no. 2 shank including cooling bottle article no. 108 101, adapter article no. 108 108 and ejector pin article no. 108 110	RS20 / RS25e	12,0 - 80,0	50,0	108 102
Arbor holder with morse taper no. 2 shank and interior cooling including adapter article no. 108 108 and ejector pin article no. 108 110	RS20 / RS25e RS120 / RS125e	12,0 - 80,0	50,0	108 104
Arbor holder with morse taper no. 3 shank including cooling bottle article no. 108 101, adapter article no. 108 108 and ejector pin article no. 108 110	RS30e / RS40e	12,0 - 80,0	50,0	108 103
Arbor holder with morse taper no. 3 shank and interior cooling including adapter article no. 108 108 and ejector pin article no. 108 110	RS30e / RS40e RS130e / RS140e	12,0 - 80,0	50,0	108 105



1.09

Adapter for magnetic-stand drilling machine

Packing unit: individual plastic pack



108 108



108 126



108 111



108 118

Description	Magnetic-stand drilling machine	Article no.
Adapter with thread retainer M18 x 6 P1,5 for core drills with Weldon shank 3/4"	RS10 / RS20 / RS25e / RS30e / RS40e RS120 / RS125e / RS130e / RS140e	108 107
Adapter with Weldon shank 3/4" for core drills with thread retainer M18 x 6 P1,5	RS10 / RS20 / RS25e / RS30e / RS40e RS120 / RS125e / RS130e / RS140e	108 108
Adapter with Weldon shank 3/4" for core drills with Quick IN-shank	RS10 / RS20 / RS25e / RS30e / RS40e RS120 / RS125e / RS130e / RS140e	108 126
Adapter with Quick IN-shank for core drills with thread retainer M18 x 6 P1,5	with Quick IN-retainer	108 111
Adapter with Quick IN-shank for core drills with Weldon shank 3/4"	with Quick IN-retainer	108 118
Adapter with Nitto-shank for core drills with Weldon shank 3/4"	with Nitto-retainer	108 190
Adapter with Weldon shank 3/4" for core drills with Nitto-shank	RS10 / RS20 / RS25e / RS30e / RS40e RS120 / RS125e / RS130e / RS140e	108191

Drill chuck and accessories for magnetic-stand drilling machine

Packing unit: individual plastic pack



108 115



108 109



108 120

Description	Magnetic-stand drilling machine	Article no.
Drill chuck with thread retainer 1/2" UNF for clamp field Ø 1,0 - 13,0 mm	RS10	108 116
Drill chuck with B16 cone for clamp field Ø 3,0 - 16,0 mm	RS20 / RS25e / RS30e / RS40e RS120 / RS125e / RS130e / RS140e	108 117
Adapter with Weldon shank 3/4" for drill chuck article no. 108 116	RS10	108 109
Adapter with thread M14 for drill chuck article no. 108 116	RS10	108 115
Spike cone with morse taper no. 2 shank for drill chuck article no. 108 117	RS20 / RS25e / RS120 / RS125e	108 120
Spike cone with morse taper no. 3 shank for drill chuck article no. 108 117	RS30e / RS40e / RS130e / RS140e	108 121
Sleeve to reduce morse taper 3 down to morse taper 2	RS30e / RS40e / RS130e / RS140e	108 125
Sleeve to reduce morse taper 3 down to morse taper 1	RS30e / RS40e / RS130e / RS140e	108 124

Thread tap quick-acting holder and quick-change inserts for magnetic-stand drilling machine

Packing unit: individual plastic pack

Description	Magnetic-stand drilling machine	Article no.
Quick-acting holder with morse taper no. 2 shank and - 5,0 / + 10,0 mm length compensation for thread taps	RS25e RS 125e	108 163
Quick-acting holder with morse taper no. 3 shank and + / - 10,0 mm length compensation for thread taps	RS40e RS 140e	108 160

Description	For thread tap Ø-shank mm	Article no. with safety coupling	Article no. without safety coupling
Quick-change insert	6,0	108 166	108 180
Quick-change insert	7,0	108 167	108 181
Quick-change insert	8,0	108 168	108 182
Quick-change insert	9,0	108 169	108 183
Quick-change insert	10,0	108 170	108 184
Quick-change insert	11,0	108 171	108 185
Quick-change insert	12,0	108 172	108 186
Quick-change insert	14,0	108 173	108 187
Quick-change insert	16,0	108 174	108 188
Quick-change insert	18,0	108 175	108 189



108 163



108 166

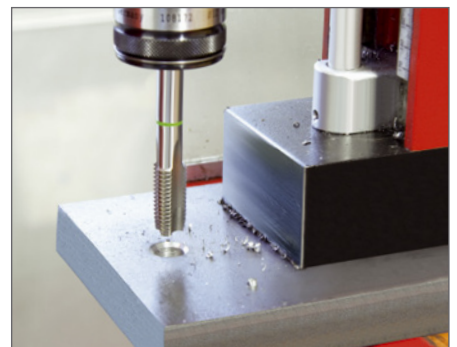


108 180

Overview of thread tap shaft diameters

Ø-shank mm	DIN 352 Nominal thread size	DIN 357 / DIN 376 Nominal thread size	DIN 371 Nominal thread size	UNC / UNF ≈ DIN 371 Nominal thread size
6,0	M 4,5 - M 8	M 8	M 5 / M 6	No. 10 / No. 12 / 1/4"
7,0	M 9 / M 10	M 9 / M 10	M 7	
8,0	M 11	M 11	M 8	5/16"
9,0	M 12	M 12	M 9	
10,0			M 10	3/8"
11,0	M 14	M 14		
12,0	M 16	M 16		
14,0	M 18	M 18		
16,0	M 20	M 20		
18,0	M 22 / M 24	M 22 / M 24		

Ø-shank mm	DIN 374 Nominal thread size	UNC / UNF ≈ DIN 376 Nominal thread size	DIN 5156 Nominal thread size	DIN 40433 Nominal thread size
6,0	MF 8		G 1/8"	PG 7
7,0	MF 10			
8,0		7/16"		
9,0	MF 12	1/2"		PG 9
10,0				
11,0	MF 14	9/16"	G 1/4"	PG 11
12,0	MF 16	5/8"	G 3/8"	PG 13,5
14,0	MF 18	3/4"		
16,0	MF 20		G 1/2"	
18,0	MF 22 / MF 24	7/8" / 1"		PG 21



Magnetic chip lifter

The RUKO magnetic chip lifter attracts metal chips thanks to its strong magnet. Pulling back the magnet into its housing simply allows the chips to drop off again. Ideal for removing the chips on magnetic-stand drilling machines and difficult to reach areas.

Packing unit: individual plastic pack

Description	Article no.
Magnetic chip lifter, 400,0 mm	108 202



Ratchet for RS4 / RS5e

Suitable instead of star grip in cramped space conditions.

Packing unit: individual plastic pack

Description	Article no.
Ratchet for RS4 / RS5e 3/8" square	108 205



Adapter for magnetic-stand drilling machines as an addition to using a ratchet

Packing unit: individual plastic pack

Description	Article no.
Adapter small, fits magnetic-stand drilling machines RS4 / RS5e / RS10	108 164
Adapter large, fits magnetic-stand drilling machines RS20 / RS25e / RS30e / RS40e	108 165



Adapter for thread taps with Weldon shank (3/4") in magnetic-stand drilling machines RS25e and RS40e

Packing unit: individual plastic pack

Thread tap	DIN	For thread tap Ø-shank mm	Square mm	Article no.	Thread tap	DIN	For thread tap Ø-shank mm	Square mm	Article no.
M 8	DIN 376	6,0		108 192	M 18	DIN 376	14,0	11,0	108 197
M 10	DIN 376	7,0	5,5	108 193	M 20	DIN 376	16,0	12,0	108 198
M 12	DIN 376	9,0	7,0	108 194	M 22 / M 24	DIN 376	18,0	14,5	108 199
M 14	DIN 376	11,0	9,0	108 195	M 27	DIN 376	20,0	16,0	108 200
M 16	DIN 376	12,0	9,0	108 196	M 30	DIN 376	22,0	18,0	108 201



Splash guard for magnetic-stand drilling machines

Packing unit: individual plastic pack

Description	Article no.
Splash guard large, fits magnetic-stand drilling machines RS30e, RS40e, RS130e, RS140e	108 203
Splash guard small, fits magnetic-stand drilling machines RS4, RS5e, RS10, RS20, RS25e, RS120, RS125e	108 204



Cooling bottles (RS 4 / 5e / 10 / 20 / 25e / 30e / 40e)

Packing unit: individual carton

Description	Article no.
Cooling-spray bottle, 500 ml	108 101
Cooling bottle with regulating tap, 500 ml	108 122



Arbor holders for M 27 and M 30 thread taps in magnetic-stand drilling machine RS40e

Packing unit: individual plastic pack

Description	Article no.
MT 3 arbor holder for M 27 thread taps	108 161
MT 3 arbor holder for M 30 thread taps	108 162



Coolants and lubricants

The RUKO coolants and lubricants provide an outstanding separation and cooling effect. They generate a high surface quality and increase the service life of the tools, even with hard and brittle materials.



Edge milling machine RKF10

Technical data:

Dimensions L x B x W:	475,0 mm x 296,0 mm x 247,0 mm
Power consumption:	1100 W
Input voltage:	230 V / 50 Hz, 110 V / 60 Hz
Zero load:	50 Hz / 3000 r.p.m., 60 Hz / 3600 r.p.m.
Net weight:	19.3 kg (42.46 Lbs)
Angle adjustment:	60,0 degrees / 12.7 mm 45,0 degrees / 16,0 mm 37.5 degrees / 15.6 mm 30,0 degrees / 14,0 mm 15,0 degrees / 12,0 mm

Accessories:

- Torx wrench
- Hook tightening wrench
- Spindle locking pin
- Tool holder
- HM cutting inserts 12 pcs.
- Hexagonal wrench M 8
- Hexagonal wrench M 3
- Combination spanner M 32
- Wrench 27,0 mm x 24,0 mm

Article no.: 104 010 RKF

With 2 additional guide rollers for a quieter, more stable running.

