

测试报告

No. CANEC0903759701

日期: 2009年07月21日 第1页,共6页

深圳市罗湖区华诚商行
中国深圳市罗湖区宝安北路春笋楼C420

以下测试之样品是由申请者所提供及确认:

WL吸油棉

SGS工作编号 : 12012779 - SZ
样品接收日期 : 2009年07月17日
测试周期 : 2009年07月17日 - 2009年07月21日
测试要求 : 根据客户要求测试
测试方法 : 请参见下一页
测试结果 : 请参见下一页

通标标准技术服务有限公司
授权签名



Sunny Huang黄昉
部门高级主管

备注: 根据客户申请, SGS出具了此中文报告, 英文版本可根据客户要求提供. (The Chinese test report is issued according to the applicant's request. The English version is available from SGS if further needed)

This document is issued by the Company under its General Conditions of Service printed overleaf or available on request and accessible at http://www.sgs.com/terms_and_conditions.htm. Attention is drawn to the limitation of liability, indemnification and jurisdiction issues defined therein. Any holder of this document is advised that information contained hereon reflects the Company's findings at the time of its intervention only and within the limits of Client's instructions, if any. The Company's sole responsibility is to its Client and this document does not exonerate parties to a transaction from exercising all their rights and obligations under the transaction documents. Any unauthorized alteration, forgery or falsification of the content or appearance of this document is unlawful and offenders may be prosecuted to the fullest extent of the law. Unless otherwise stated the results shown in this test report refer only to the sample(s) tested. This document cannot be reproduced except in full, without prior approval of the Company.

测试报告

No. CANEC0903759701

日期: 2009年07月21日 第2页,共6页

测试结果:

样品1 ID : CAN09-037597.001
 样品1描述 : 白色片状物

元素分析

测试项目	单位	测试方法 (参考)	测试结果	MDL
镉 (Cd)	毫克/千克	IEC 62321:2008, ICP-OES	N.D.	2
铅 (Pb)	毫克/千克	IEC 62321:2008, ICP-OES	N.D.	2
汞 (Hg)	毫克/千克	IEC 62321:2008, ICP-OES	N.D.	2
碱性溶液萃取测六价铬(Cr VI)	毫克/千克	IEC 62321:2008, UV-Vis	N.D.	2

注释:

1. 毫克/千克 = ppm
2. N.D.= 未检出 (< MDL)
3. MDL = 方法检测限

阻燃剂

测试项目	单位	测试方法 (参考)	测试结果	MDL
多溴联苯(PBBs)之和	毫克/千克	-	N.D.	-
单溴联苯	毫克/千克	IEC 62321:2008, GC-MS	N.D.	5
二溴联苯	毫克/千克	IEC 62321:2008, GC-MS	N.D.	5
三溴联苯	毫克/千克	IEC 62321:2008, GC-MS	N.D.	5
四溴联苯	毫克/千克	IEC 62321:2008, GC-MS	N.D.	5
五溴联苯	毫克/千克	IEC 62321:2008, GC-MS	N.D.	5
六溴联苯	毫克/千克	IEC 62321:2008, GC-MS	N.D.	5
七溴联苯	毫克/千克	IEC 62321:2008, GC-MS	N.D.	5
八溴联苯	毫克/千克	IEC 62321:2008, GC-MS	N.D.	5
九溴联苯	毫克/千克	IEC 62321:2008, GC-MS	N.D.	5
十溴联苯	毫克/千克	IEC 62321:2008, GC-MS	N.D.	5
多溴二苯醚(PBDEs)之和	毫克/千克	-	N.D.	-
单溴二苯醚	毫克/千克	IEC 62321:2008, GC-MS	N.D.	5
二溴二苯醚	毫克/千克	IEC 62321:2008, GC-MS	N.D.	5
三溴二苯醚	毫克/千克	IEC 62321:2008, GC-MS	N.D.	5
四溴二苯醚	毫克/千克	IEC 62321:2008, GC-MS	N.D.	5
五溴二苯醚	毫克/千克	IEC 62321:2008, GC-MS	N.D.	5
六溴二苯醚	毫克/千克	IEC 62321:2008, GC-MS	N.D.	5
七溴二苯醚	毫克/千克	IEC 62321:2008, GC-MS	N.D.	5
八溴二苯醚	毫克/千克	IEC 62321:2008, GC-MS	N.D.	5
九溴二苯醚	毫克/千克	IEC 62321:2008, GC-MS	N.D.	5
十溴二苯醚 ##	毫克/千克	IEC 62321:2008, GC-MS	N.D.	5

This document is issued by the Company under its General Conditions of Service printed overleaf or available on request and accessible at http://www.sgs.com/terms_and_conditions.htm. Attention is drawn to the limitation of liability, indemnification and jurisdiction issues defined therein. Any holder of this document is advised that information contained hereon reflects the Company's findings at the time of its intervention only and within the limits of Client's instructions, if any. The Company's sole responsibility is to its Client and this document does not exonerate parties to a transaction from exercising all their rights and obligations under the transaction documents. Any unauthorized alteration, forgery or falsification of the content or appearance of this document is unlawful and offenders may be prosecuted to the fullest extent of the law. Unless otherwise stated the results shown in this test report refer only to the sample(s) tested. This document cannot be reproduced except in full, without prior approval of the Company.

注释:

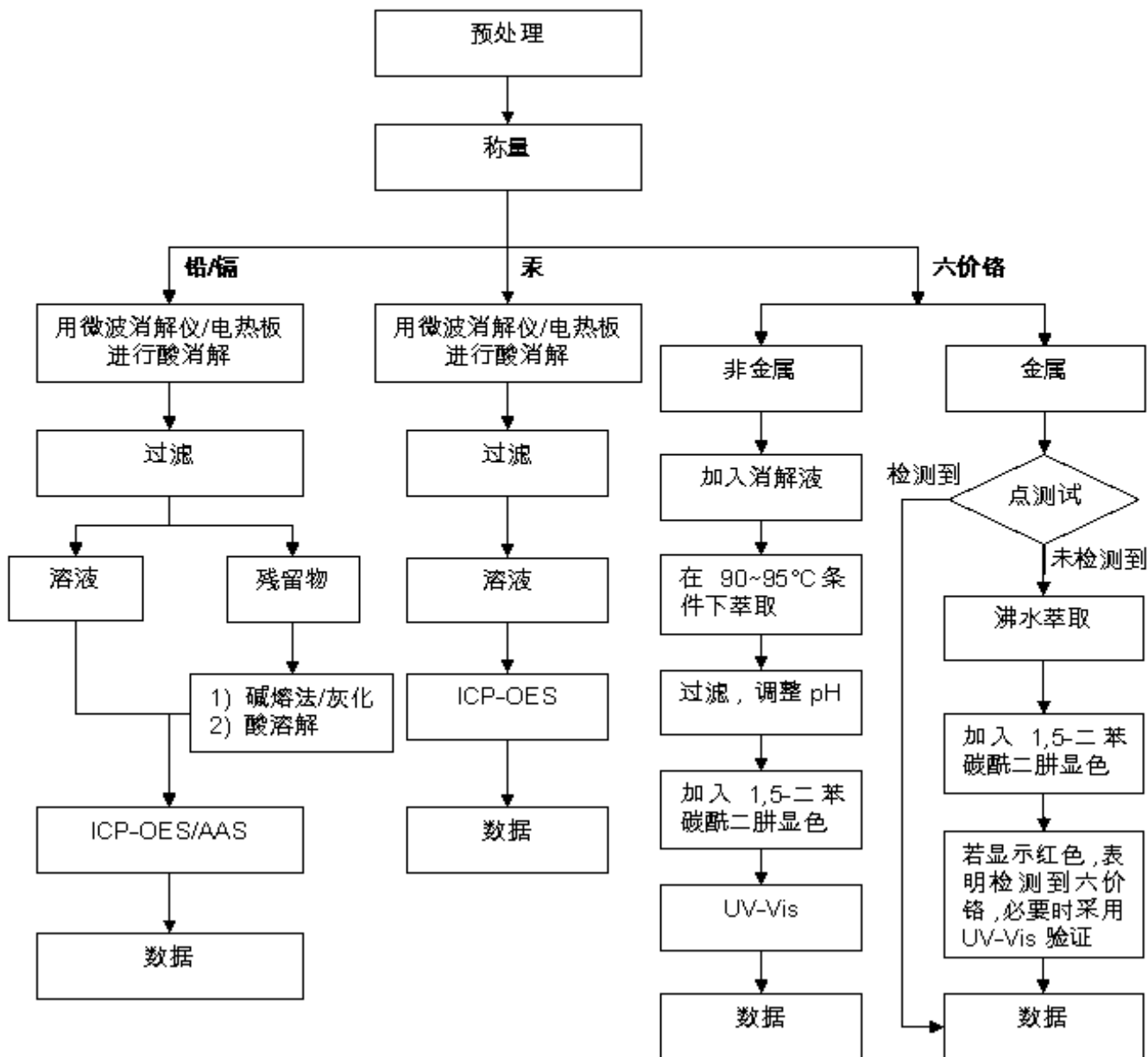
1. 毫克/千克 = ppm
2. N.D.= 未检出 (< MDL)
3. MDL = 方法检测限
4. ## =根据欧洲法庭2008年4月1日的决议, 2005/717/EC中关于聚合物样品中十溴二苯醚的豁免被否决。自2008年7月1日起, 十溴二苯醚被包含于多溴二苯醚的总和计算之中。
5. "-" = 未规定
6. 多溴二苯醚 = 多溴联苯醚

This document is issued by the Company under its General Conditions of Service printed overleaf or available on request and accessible at http://www.sgs.com/terms_and_conditions.htm. Attention is drawn to the limitation of liability, indemnification and jurisdiction issues defined therein. Any holder of this document is advised that information contained hereon reflects the Company's findings at the time of its intervention only and within the limits of Client's instructions, if any. The Company's sole responsibility is to its Client and this document does not exonerate parties to a transaction from exercising all their rights and obligations under the transaction documents. Any unauthorized alteration, forgery or falsification of the content or appearance of this document is unlawful and offenders may be prosecuted to the fullest extent of the law. Unless otherwise stated the results shown in this test report refer only to the sample(s) tested. This document cannot be reproduced except in full, without prior approval of the Company.

附件

- 1) 分析人员: 许锋华 / 李莉莉
- 2) 项目负责人: 余奕东 / 王宏霖

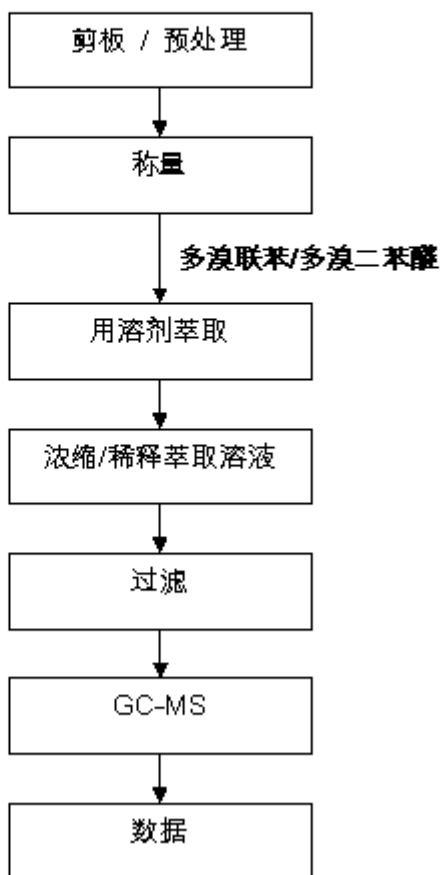
测试流程图



This document is issued by the Company under its General Conditions of Service printed overleaf or available on request and accessible at http://www.sgs.com/terms_and_conditions.htm. Attention is drawn to the limitation of liability, indemnification and jurisdiction issues defined therein. Any holder of this document is advised that information contained hereon reflects the Company's findings at the time of its intervention only and within the limits of Client's instructions, if any. The Company's sole responsibility is to its Client and this document does not exonerate parties to a transaction from exercising all their rights and obligations under the transaction documents. Any unauthorized alteration, forgery or falsification of the content or appearance of this document is unlawful and offenders may be prosecuted to the fullest extent of the law. Unless otherwise stated the results shown in this test report refer only to the sample(s) tested. This document cannot be reproduced except in full, without prior approval of the Company.

测试流程图

- 1) 分析人员: 唐丽娜
- 2) 项目负责人: 赵瑞娜



This document is issued by the Company under its General Conditions of Service printed overleaf or available on request and accessible at http://www.sgs.com/terms_and_conditions.htm. Attention is drawn to the limitation of liability, indemnification and jurisdiction issues defined therein. Any holder of this document is advised that information contained hereon reflects the Company's findings at the time of its intervention only and within the limits of Client's instructions, if any. The Company's sole responsibility is to its Client and this document does not exonerate parties to a transaction from exercising all their rights and obligations under the transaction documents. Any unauthorized alteration, forgery or falsification of the content or appearance of this document is unlawful and offenders may be prosecuted to the fullest extent of the law. Unless otherwise stated the results shown in this test report refer only to the sample(s) tested. This document cannot be reproduced except in full, without prior approval of the Company.

测试报告

No. CANEC0903759701

日期: 2009年07月21日 第6页,共6页

样品照片:



此照片仅限于随SGS正本报告使用

*** 报告完 ***

This document is issued by the Company under its General Conditions of Service printed overleaf or available on request and accessible at http://www.sgs.com/terms_and_conditions.htm. Attention is drawn to the limitation of liability, indemnification and jurisdiction issues defined therein. Any holder of this document is advised that information contained hereon reflects the Company's findings at the time of its intervention only and within the limits of Client's instructions, if any. The Company's sole responsibility is to its Client and this document does not exonerate parties to a transaction from exercising all their rights and obligations under the transaction documents. Any unauthorized alteration, forgery or falsification of the content or appearance of this document is unlawful and offenders may be prosecuted to the fullest extent of the law. Unless otherwise stated the results shown in this test report refer only to the sample(s) tested. This document cannot be reproduced except in full, without prior approval of the Company.