

# 高品质的卫生管和管配件 High Quality Sanitary Tubes and Fittings





森明深知，阀门管道连接件等产品对制药、啤酒、食品、乳制品、饮料、化妆品、及化工等卫生领域产品功能的发挥非常重要，所以其产品必须满足极高的精度与光洁度要求。为确保森明管道连接产品的互换性与产品的高精度，每一个部件的制作加工都在直接数控（CNC）下进行。森明品牌各系列产品在卫生级流体设备行业中享有良好的声誉。

SENMING well knows the importance of sanitary valves and pipe-fittings to pharmacy, beer, food, dairy, beverage, cosmetic and chemical industries. So, it sets extremely high requirements to its products. For precision, every product is produced by CNC machine. SENMING various Series products. brand reward good reputation in sanitary fluid facility industry.

森明生产的各种管件连接系列产品有 DIN、3A、SMS、ISO/IDF、BS-RJT、DS 等各标准系列。其中卫生级管件：管道连接用的 45°/90°/180° 弯头系列；三通/四通系列；同（偏）心大小头系列使您的生产线大小管道系统的自由连通。各系列管件配件有焊接、快装、螺纹与法兰四种常用连接方式与您的管道系统标准连接。

森明为配合客户的需求，致力于制造耐腐蚀性、耐久性，焊接和组合可靠并有最高强度的安装材料。在每个制造过程都有严格误差控制，且管道连接件有多种表面处理方法，还有均一的外壳厚度。

森明仍然不能满足于现状，依旧致力于新产品的研发与生产，继续朝着更领先的地位前进，利用其生产技术和产品开发的能力来迎接新的挑战，最终满足人类 21 世纪的健康需要。

SENMING produce kinds of pipe products which have DIN, 3A, SMS, ISO/IDF, BS - RJT, DS and so on various standard series. And pipe fitting: 45°/90°/180°/ bend series, tee/cross series, concentric (eccentric) series make your pipeline system free connectivity. Each series pipe fittings have welding, clamp, thread and flange four common install ways with your pipe system standard link.

SENMING according to the customers requirements, devoted itself to manufacturing the kind of fitting materials which can resistant to corrosion, wearing, welding and combination and have high intensity. In each manufacturing process has strict control error, and pipe connectors have a variety of surface treatment methods, and uniform shell thickness.

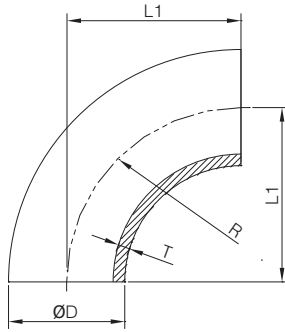
However SENMING is not satisfied with current situations, still devoting itself to researching and developing the new products, Move towards more advanced leading position. Take advantage of product technical and product developing ability to greet the new challenge, and finally to satisfied the 21th century health needs.



# DIN

## 1.1 卫生级管件 Sanitary Pipe-fittings

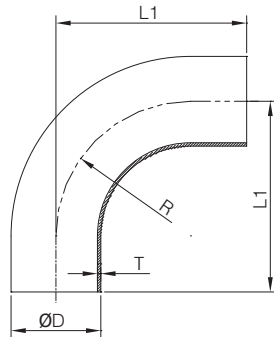
No.SM0111001



90° 焊接式弯头  
90° Welded Elbow

Size	L1	D	R	T
DN10	26.0	12.0	26.0	1.5
DN15	35.0	18.0	35.0	1.5
DN20	40.0	22.0	40.0	1.5
DN25	50.0	28.0	50.0	1.5
DN32	55.0	34.0	55.0	1.5
DN40	60.0	40.0	60.0	1.5
DN50	70.0	52.0	70.0	1.5
DN65	80.0	70.0	80.0	2.0
DN80	90.0	85.0	90.0	2.0
DN100	100.0	104.0	100.0	2.0
DN125	187.0	129.0	187.0	2.0
DN150	225.0	154.0	225.0	2.0

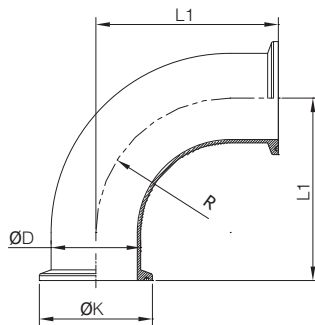
No.SM0111002



90° 加直端焊接式弯头  
90° Weleded Elbow With  
Straight Ends

Size	L1	D	R	T
DN10	38.0	12.0	26.0	1.5
DN15	47.0	18.0	35.0	1.5
DN20	52.0	22.0	40.0	1.5
DN25	70.0	28.0	50.0	1.5
DN32	78.0	34.0	55.0	1.5
DN40	85.0	40.0	60.0	1.5
DN50	97.0	52.0	70.0	1.5
DN65	110.0	70.0	80.0	2.0
DN80	118.0	85.0	90.0	2.0
DN100	140.0	104.0	100.0	2.0

No.SM0111003



90° 夹式弯头  
90° Clamped Elbow

Size	L1	K	D	R
DN15	53.0	34.0	18.0	35.0
DN20	58.0	34.0	22.0	40.0
DN25	71.0	50.5	28.0	50.0
DN32	76.0	50.5	34.0	55.0
DN40	81.0	50.5	40.0	60.0
DN50	91.0	64.0	52.0	70.0
DN65	101.0	91.0	70.0	80.0
DN80	111.0	106.0	85.0	90.0
DN100	121.0	119.0	104.0	100.0

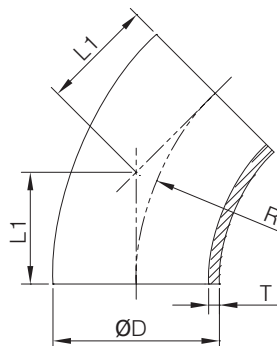
# DIN

## 1.1 卫生级管件 Sanitary Pipe-fittings

### 45° 焊接式弯头 45° Welded Elbow

Size	L1	D	R	T
DN10	10.8	12.0	26.0	1.5
DN15	14.5	18.0	35.0	1.5
DN20	16.6	22.0	40.0	1.5
DN25	20.7	28.0	50.0	1.5
DN32	22.8	34.0	55.0	1.5
DN40	24.8	40.0	60.0	1.5
DN50	29.0	52.0	70.0	1.5
DN65	33.1	70.0	80.0	2.0
DN80	37.3	85.0	90.0	2.0
DN100	41.4	104.0	100.0	2.0
DN125	77.5	129.0	187.0	2.0
DN150	93.2	154.0	225.0	2.0

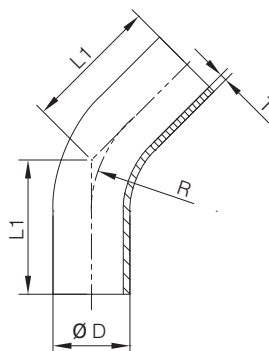
No.SM0211004



### 45° 加长焊接式弯头 45° Welded Elbow With Straight Ends

Size	L1	D	R	T
DN10	35.8	12.0	26.0	1.5
DN15	39.5	18.0	35.0	1.5
DN20	41.6	22.0	40.0	1.5
DN25	60.7	28.0	50.0	1.5
DN32	62.8	34.0	55.0	1.5
DN40	64.9	40.0	60.0	1.5
DN50	69.0	52.0	70.0	1.5
DN65	73.1	70.0	80.0	2.0
DN80	92.3	85.0	90.0	2.0
DN100	96.4	104.0	100.0	2.0
DN125	160.2	129.0	187.0	2.0
DN150	193.2	154.0	225.0	2.0

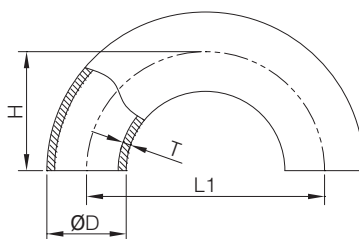
No.SM0211005



### 180° 焊接式弯头 180° Welded Elbow

Size	L1	D	H	T
DN15	70.0	18.0	35.0	1.5
DN20	80.0	22.0	40.0	1.5
DN25	100.0	28.0	50.0	1.5
DN32	110.0	34.0	55.0	1.5
DN40	120.0	40.0	60.0	1.5
DN50	140.0	52.0	70.0	1.5
DN65	160.0	70.0	80.0	2.0
DN80	180.0	85.0	90.0	2.0
DN100	200.0	104.0	100.0	2.0

No.SM0311006

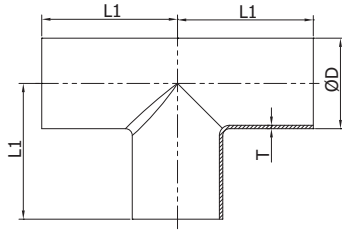


# DIN

## 1.1 卫生级管件 Sanitary Pipe-fittings



No.SM0311007

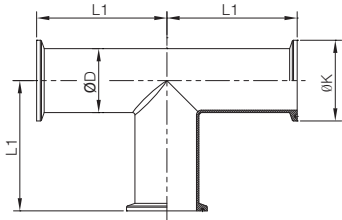


焊接式三通  
Welded Tee

Size	L1	D	T
DN10	26.0	12.0	1.5
DN15	35.0	18.0	1.5
DN20	40.0	22.0	1.5
DN25	50.0	28.0	1.5
DN32	55.0	34.0	1.5
DN40	60.0	40.0	1.5
DN50	70.0	52.0	1.5
DN65	80.0	70.0	2.0
DN80	90.0	85.0	2.0
DN100	100.0	104.0	2.0
DN125	187.0	129.0	2.0
DN150	225.0	154.0	2.0



No.SM0312008

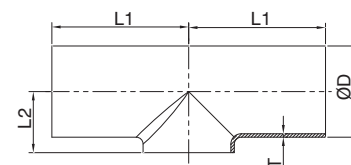


夹式三通  
Clamped Tee

Size	L1	K	D
DN15	53.0	34.0	18.0
DN20	58.0	34.0	22.0
DN25	71.0	50.5	28.0
DN32	76.0	50.5	34.0
DN40	81.0	50.5	40.0
DN50	91.0	64.0	52.0
DN65	101.0	91.0	70.0
DN80	111.0	106.0	85.0
DN100	121.0	119.0	104.0



No.SM0311009



短焊三通  
Short-type Welded Tee

Size	L1	L2	D	T
DN10	26.0	7.5	12.0	1.5
DN15	35.0	10.5	18.0	1.5
DN20	40.0	12.5	22.0	1.5
DN25	50.0	16.5	28.0	1.5
DN32	55.0	19.5	34.0	1.5
DN40	60.0	22.5	40.0	1.5
DN50	70.0	30.0	52.0	1.5
DN65	80.0	39.5	70.0	2.0
DN80	90.0	47.5	85.0	2.0
DN100	100.0	58.0	104.0	2.0
DN125	187.0	70.5	129.0	2.0
DN150	225.0	83.0	154.0	2.0

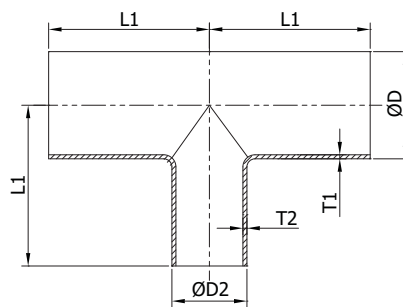
# DIN

## 1.1 卫生级管件 Sanitary Pipe-fittings

### 变径三通 Reducing Tee

Size	L1	D	D2	T1	T2
DN15 DN10	35.0	18.0	12.0	1.5	1.5
DN20 DN15	40.0	22.0	18.0	1.5	1.5
DN25 DN15	50.0	28.0	18.0	1.5	1.5
DN25 DN20	50.0	28.0	22.0	1.5	1.5
DN32 DN25	55.0	34.0	28.0	1.5	1.5
DN40 DN25	60.0	40.0	28.0	1.5	1.5
DN40 DN32	60.0	40.0	34.0	1.5	1.5
DN50 DN32	70.0	52.0	34.0	1.5	1.5
DN50 DN40	70.0	52.0	40.0	1.5	1.5
DN65 DN50	80.0	70.0	52.0	2.0	1.5
DN80 DN50	90.0	85.0	52.0	2.0	1.5
DN80 DN65	90.0	85.0	70.0	2.0	2.0
DN100 DN50	100.0	104.0	52.0	2.0	1.5
DN100 DN65	100.0	104.0	70.0	2.0	2.0
DN100 DN80	100.0	104.0	85.0	2.0	2.0

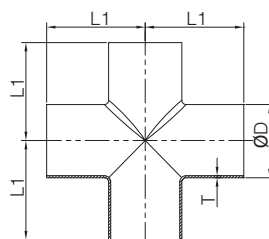
### No.SM0311011



### 焊接式四通 Welded Cross

Size	L1	D	T
DN25	50.0	28.0	1.5
DN32	55.0	34.0	1.5
DN40	60.0	40.0	1.5
DN50	70.0	52.0	1.5
DN65	80.0	70.0	2.0
DN80	90.0	85.0	2.0
DN100	100.0	104.0	2.0

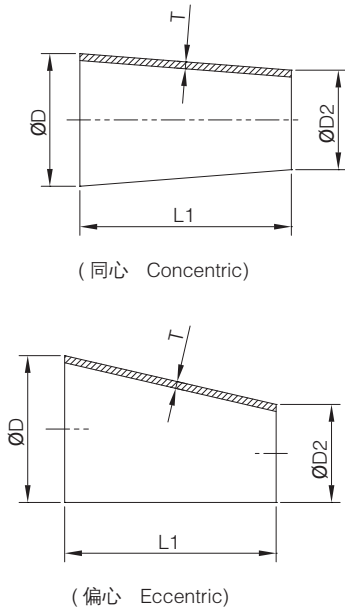
### No.SM0311010



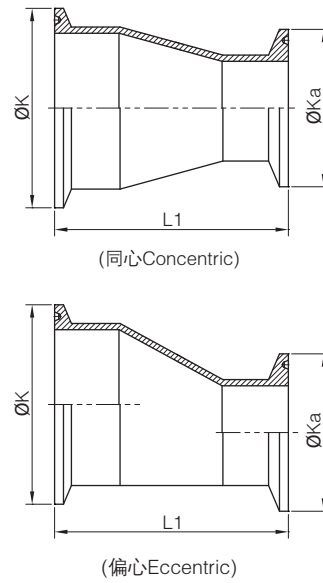
# DIN

## 1.1 卫生级管件 Sanitary Pipe-fittings

No.SM0411012



No.SM0412013



焊接式大小头  
Welded Reducer

Size	L1	D	D2	T
DN20/15	7.0	22.0	18.0	1.5×1.5
DN25/20	11.0	28.0	22.0	1.5×1.5
DN32/20	22.0	34.0	22.0	1.5×1.5
DN32/25	11.0	34.0	28.0	1.5×1.5
DN40/20	33.0	40.0	22.0	1.5×1.5
DN40/25	22.0	40.0	28.0	1.5×1.5
DN40/32	11.0	40.0	34.0	1.5×1.5
DN50/25	44.0	52.0	28.0	1.5×1.5
DN50/32	33.0	52.0	34.0	1.5×1.5
DN50/40	22.0	52.0	40.0	1.5×1.5
DN65/25	73.0	70.0	28.0	2.0×1.5
DN65/32	62.0	70.0	34.0	2.0×1.5
DN65/40	51.0	70.0	40.0	2.0×1.5
DN65/50	29.0	70.0	52.0	2.0×1.5
DN80/40	78.0	85.0	40.0	2.0×1.5
DN80/50	56.0	85.0	52.0	2.0×1.5
DN80/65	27.0	85.0	70.0	2.0×2.0
DN100/50	90.0	104.0	52.0	2.0×1.5
DN100/65	61.0	104.0	70.0	2.0×2.0
DN100/80	34.0	104.0	85.0	2.0×2.0

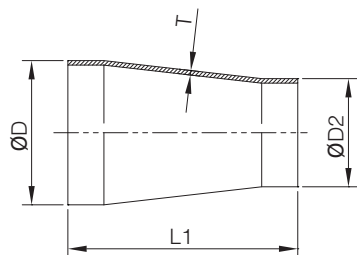
夹式大小头  
Clamped Reducer

Size	L1	K	Ka	
DN20/15	50.0	34.0	34.0	
DN25/20	54.0	50.5	34.0	
DN32/20	65.0	50.5	34.0	
DN32/25	54.0	50.5	50.5	
DN40/20	76.0	50.5	34.0	
DN40/25	65.0	50.5	50.5	
DN40/32	54.0	50.5	50.5	
DN50/25	87.0	64.0	50.5	
DN50/32	76.0	64.0	50.5	
DN50/40	65.0	64.0	50.5	
DN65/25	116.0	91.0	50.5	
DN65/32	105.0	91.0	50.5	
DN65/40	94.0	91.0	50.5	
DN65/50	72.0	91.0	64.0	
DN80/40	121.0	106.0	50.5	
DN80/50	99.0	106.0	64.0	
DN80/65	70.0	106.0	91.0	
DN100/50	133.0	119.0	64.0	
DN100/65	104.0	119.0	91.0	
DN100/80	77.0	119.0	106.0	

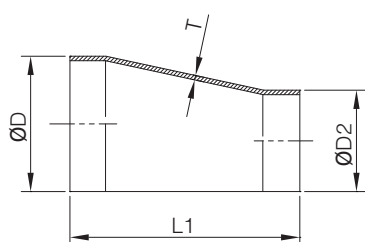
# DIN

## 1.1 卫生级管件 Sanitary Pipe-fittings

No.SM0411014

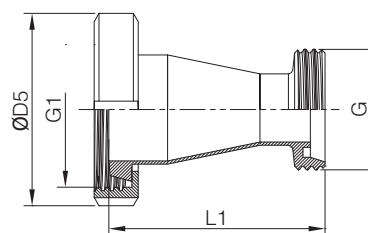


(同心 Concentric)

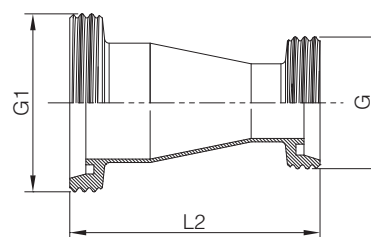


(偏心 Eccentric)

No.SM0415015



(单螺纹单螺母 Threaded/nut)



(螺纹式 Threaded)

加直端焊接式大小头  
Welded Reducer  
With Straight Ends

Size	L1	D	D2	T
DN20/15	38.0	22.0	18.0	1.5×1.5
DN25/20	38.0	28.0	22.0	1.5×1.5
DN32/20	50.0	34.0	22.0	1.5×1.5
DN32/25	50.0	34.0	28.0	1.5×1.5
DN40/20	50.0	40.0	22.0	1.5×1.5
DN40/25	50.0	40.0	28.0	1.5×1.5
DN40/32	50.0	40.0	34.0	1.5×1.5
DN50/25	67.0	52.0	28.0	1.5×1.5
DN50/32	67.0	52.0	34.0	1.5×1.5
DN50/40	67.0	52.0	40.0	1.5×1.5
DN65/25	67.0	70.0	28.0	2.0×1.5
DN65/32	67.0	70.0	34.0	2.0×1.5
DN65/40	67.0	70.0	40.0	2.0×1.5
DN65/50	67.0	70.0	52.0	2.0×1.5
DN80/40	67.0	85.0	40.0	2.0×1.5
DN80/50	67.0	85.0	52.0	2.0×1.5
DN80/65	67.0	85.0	70.0	2.0×2.0
DN100/50	87.0	104.0	52.0	2.0×1.5
DN100/65	87.0	104.0	70.0	2.0×2.0
DN100/80	87.0	104.0	85.0	2.0×2.0

由任式大小头  
Union-type Reducer

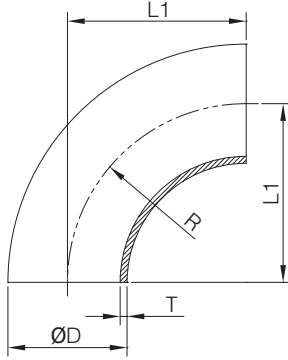
Size	L1	G1	D5	G	L2
DN20/15	70.0	RD44x1/6	54.0	RD34x1/8	75.0
DN25/20	75.0	RD52x1/6	63.0	RD44x1/6	80.0
DN32/20	87.0	RD58x1/6	70.0	RD44x1/6	92.0
DN32/25	89.0	RD58x1/6	70.0	RD52x1/6	94.0
DN40/20	87.0	RD65x1/6	78.0	RD44x1/6	92.0
DN40/25	89.0	RD65x1/6	78.0	RD52x1/6	94.0
DN40/32	89.0	RD65x1/6	78.0	RD58x1/6	94.0
DN50/25	107.0	RD78x1/6	92.0	RD52x1/6	111.0
DN50/32	107.0	RD78x1/6	92.0	RD58x1/6	111.0
DN50/40	107.0	RD78x1/6	92.0	RD65x1/6	111.0
DN65/25	109.0	RD95x1/6	112.0	RD52x1/6	113.0
DN65/32	109.0	RD95x1/6	112.0	RD58x1/6	113.0
DN65/40	109.0	RD95x1/6	112.0	RD65x1/6	113.0
DN65/50	109.0	RD95x1/6	112.0	RD78x1/6	113.0
DN80/40	109.0	RD110x1/4	127.0	RD65x1/6	117.0
DN80/50	109.0	RD110x1/4	127.0	RD78x1/6	117.0
DN80/65	111.0	RD110x1/4	127.0	RD95x1/6	119.0
DN100/50	133.0	RD130x1/4	148.0	RD78x1/6	137.0
DN100/65	135.0	RD130x1/4	148.0	RD95x1/6	139.0
DN100/80	139.0	RD130x1/4	148.0	RD110x1/4	143.0



# 3A

## 1.2 卫生级管件 Sanitary Pipe-fittings

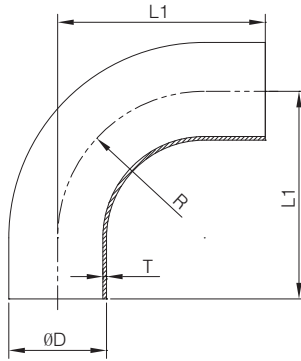
No.SM0121016



90° 焊接式弯头  
90° Welded Elbow

Size	L1	D	R	T
1/2"	19.05	12.7	19.05	1.65
3/4"	28.5	19.05	28.5	1.65
1"	38.1	25.4	38.1	1.65
1 1/4"	47.7	31.8	47.7	1.65
1 1/2"	57.2	38.1	57.2	1.65
2"	76.2	50.8	76.2	1.65
2 1/2"	95.3	63.5	95.3	1.65
3"	114.3	76.2	114.3	1.65
4"	152.4	101.6	152.4	2.1
6"	228.6	152.4	228.6	2.8

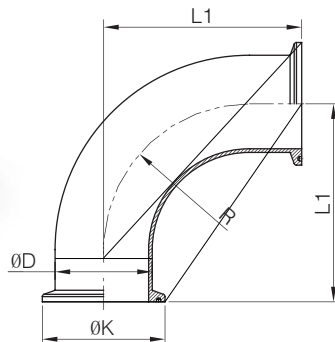
No.SM0121017



90° 加长焊接式弯头  
90° Weleded Elbow  
With Straight Ends

Size	L1	D	R	T
1/2"	52.4	12.7	19.05	1.65
3/4"	52.4	19.05	28.5	1.65
1"	52.4	25.4	38.1	1.65
1 1/4"	64.0	31.8	47.7	1.65
1 1/2"	74.6	38.1	57.2	1.65
2"	103.2	50.8	76.2	1.65
2 1/2"	131.8	63.5	95.3	1.65
3"	160.3	76.2	114.3	1.65
4"	211.1	101.6	152.4	2.1

No.SM0122018



90° 夹式弯头  
90° Clamped Elbow

Size	L1	K	D	R
1/2"	62.0	25.2	12.7	19.05
3/4"	41.2	25.2	19.05	28.5
1"	50.8	50.5	25.4	38.1
1 1/4"	60.4	50.5	31.8	47.7
1 1/2"	69.9	50.5	38.1	57.2
2"	88.9	64.0	50.8	76.2
2 1/2"	108.0	77.5	63.5	95.3
3"	127.0	91.0	76.2	114.3
4"	168.3	119.0	101.6	152.4

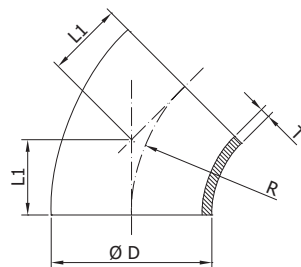
# 3A

## 1.2 卫生级管件 Sanitary Pipe-fittings

### 45° 焊接式弯头 45° Welded Elbow

Size	L1	D	R	T
1"	15.8	25.4	38.1	1.65
1 1/4"	19.8	31.8	47.7	1.65
1 1/2"	23.7	38.1	57.2	1.65
2"	31.6	50.8	76.2	1.65
2 1/2"	39.5	63.5	95.3	1.65
3"	47.3	76.2	114.3	1.65
4"	63.1	101.6	152.4	2.1
6"	94.7	152.4	228.6	2.8

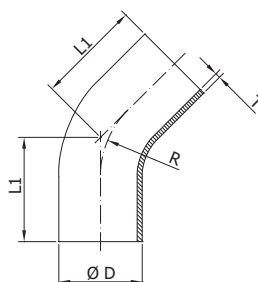
### No.SM0221019



### 45° 加长焊接式弯头 45° Welded Elbow With Straight Ends

Size	L1	D	R	T
1"	30.2	25.4	38.1	1.65
1 1/4"	35.8	31.8	47.7	1.65
1 1/2"	41.3	38.1	57.2	1.65
2"	58.7	50.8	76.2	1.65
2 1/2"	76.2	63.5	95.3	1.65
3"	93.7	76.2	114.3	1.65
4"	122.2	101.6	152.4	2.10

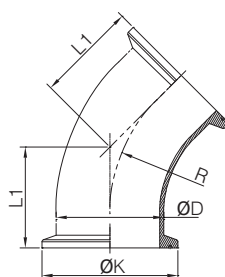
### No.SM0221020



### 45° 夹式弯头 45° Clamped Elbow

Size	L1	K	D	R
1"	28.5	50.5	25.4	38.1
1 1/4"	32.5	50.5	31.8	47.7
1 1/2"	36.4	50.5	38.1	57.2
2"	44.3	64.0	50.8	76.2
2 1/2"	52.2	77.5	63.5	95.3
3"	60.0	91.0	76.2	114.3
4"	79.0	119.0	101.6	152.4

### No.SM0222021

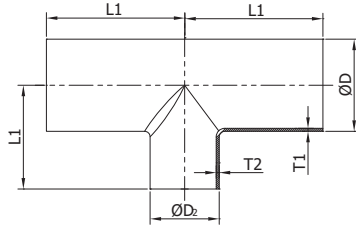


# 3A

## 1.2 卫生级管件 Sanitary Pipe-fittings



No.SM0321022

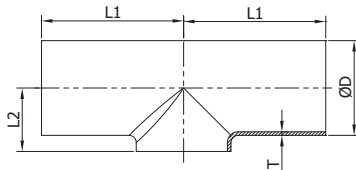


长型变径焊接三通  
Long-type Reducing  
Welded Tee

Size	L1	D	D2	T1	T2
3/4" 1/2"	47.6	19.05	12.7	1.65	1.65
1" 1/2"	47.6	25.4	12.7	1.65	1.65
1" 3/4"	47.6	25.4	19.05	1.65	1.65
1 1/4" 1"	47.7	31.8	25.4	1.65	1.65
1 1/2" 1"	57.2	38.1	25.4	1.65	1.65
1 1/2" 1 1/4"	57.2	38.1	31.8	1.65	1.65
2" 1 1/4"	76.2	50.8	31.8	1.65	1.65
2" 1 1/2"	76.2	50.8	38.1	1.65	1.65
2 1/2" 2"	76.2	63.5	50.8	1.65	1.65
3" 2"	82.6	76.2	50.8	1.65	1.65
3" 2 1/2"	82.6	76.2	63.5	1.65	1.65
4" 2"	98.4	101.6	50.8	2.1	1.65
4" 2 1/2"	98.4	101.6	63.5	2.1	1.65
4" 3"	98.4	101.6	76.2	2.1	1.65



No.SM0321023



短焊三通  
Short-type Welded Tee

Size	L1	L2	D	T
1"	28.6	14.7	25.4	1.65
1 1/4"	38.0	18.0	31.8	1.65
1 1/2"	42.05	21.0	38.1	1.65
2"	52.35	27.4	50.8	1.65
2 1/2"	59.55	34.8	63.5	1.65
3"	65.9	41.1	76.2	1.65
4"	87.35	53.8	101.6	2.1

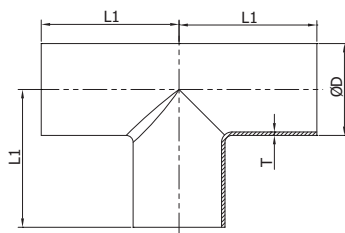
# 3A

## 1.2 卫生级管件 Sanitary Pipe-fittings

### 焊接式三通 Welded Tee

Size	L1	D	T
1/2"	22.5	12.7	1.65
3/4"	28.6	19.05	1.65
1"	28.6	25.4	1.65
1 1/4"	38.0	31.8	1.65
1 1/2"	42.05	38.1	1.65
2"	52.35	50.8	1.65
2 1/2"	59.55	63.5	1.65
3"	65.9	76.2	1.65
4"	87.35	101.6	2.10

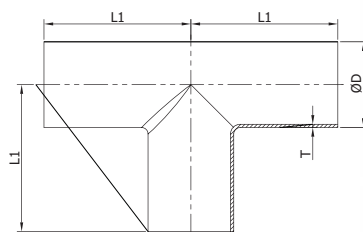
### No.SM0321024



### 长型焊式三通 Long-type Welded Tee

Size	L1	D	T
1/2"	38.1	12.7	1.65
3/4"	47.6	19.05	1.65
1"	47.6	25.4	1.65
1 1/4"	47.7	31.8	1.65
1 1/2"	57.2	38.1	1.65
2"	76.2	50.8	1.65
2 1/2"	76.2	63.5	1.65
3"	82.6	76.2	1.65
4"	98.4	101.6	2.10

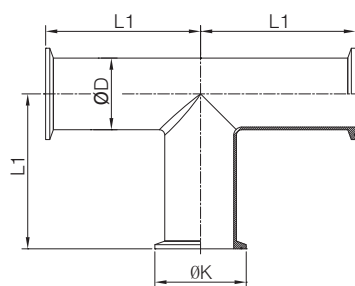
### No.SM0321025



### 长型夹式三通 Long-type Clamped Tee

Size	L1	K	D
1/2"	50.8	25.2	12.7
3/4"	60.3	25.2	19.05
1"	60.3	50.5	25.4
1 1/4"	60.4	50.5	31.8
1 1/2"	69.9	50.5	38.1
2"	88.9	64.0	50.8
2 1/2"	88.9	77.5	63.5
3"	95.3	91.0	76.2
4"	114.3	119.0	101.6

### No.SM0322026

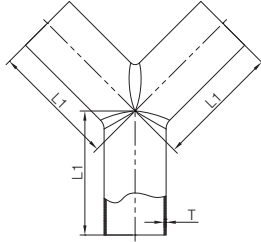


# 3A

## 1.2 卫生级管件 Sanitary Pipe-fittings



No.SM0321027

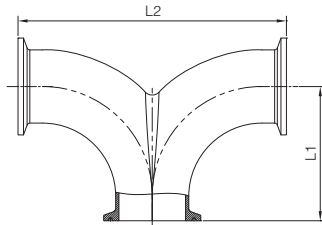


对焊“Y”型三通  
Butt Weld Y-type Tee

Size	L1	T
1/2"	50.8	1.65
3/4"	50.8	1.65
1"	76.2	1.65
1 1/2"	76.2	1.65
2"	101.6	1.65
2 1/2"	127.0	1.65
3"	152.4	1.65
4"	203.2	2.10
6"	203.2	2.80



No.SM0322028

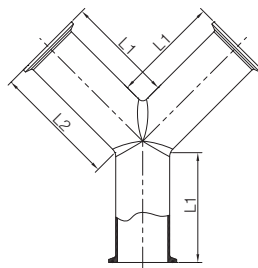


90° 夹式双头弯  
90° Clamp Double Bend

Size	L1	L2	STOCK NO.
1 1/2"	69.85	139.7	132015
2"	88.9	177.8	132020
2 1/2"	107.9	215.9	132025
3"	127.0	228.6	132030



No.SM0322029



135° 夹式 Y 型三通  
135° clamped Y-type

Size	L1	L2	STOCK NO.
1 1/2"	63.5	74.6	131Y15
2"	79.4	95.3	131Y20
2 1/2"	98.4	117.5	131Y25
3"	114.3	136.5	131Y30
4"	152.4	182.6	131Y40

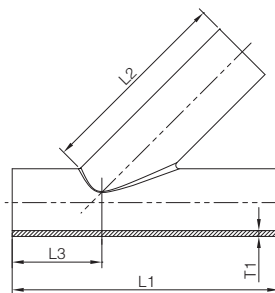
# 3A

## 1.2 卫生级管件 Sanitary Pipe-fittings

### 对焊斜型三通 Butt Weld Slanting-type Tee

Size	L1	L2	L3	T
1/2"	152.4	127.0	25.4	1.65
3/4"	152.4	127.0	25.4	1.65
1"	152.4	127.0	25.4	1.65
1 1/2"	187.3	173.1	30.2	1.65
2"	222.2	180.9	41.3	1.65
2 1/2"	254.0	215.9	38.1	1.65
3"	273.1	225.4	47.6	1.65
4"	325.5	273.1	52.4	2.10
6"	419.1	317.5	101.6	2.80

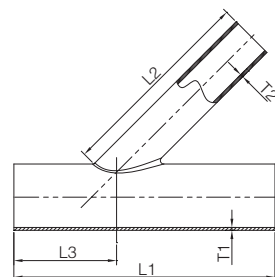
No.SM0321030



### 对焊斜型变径三通 Butt Weld Slanting-type Reducing Tee

Size	L1	L2	L3	T1	T2
1 1/2" x 1"	187.3	157.2	30.2	1.65	1.65
2" x 1"	222.2	181.0	41.3	1.65	1.65
2" x 1 1/2"	222.2	181.0	41.3	1.65	1.65
2 1/2" x 1"	254.0	215.9	38.1	1.65	1.65
2 1/2" x 1 1/2"	254.0	215.9	38.1	1.65	1.65
2 1/2" x 2"	254.0	215.9	38.1	1.65	1.65
3" x 1"	273.1	225.4	47.6	1.65	1.65
3" x 1 1/2"	273.1	225.4	47.6	1.65	1.65
3" x 2"	273.1	225.4	47.6	1.65	1.65
3" x 2 1/2"	273.1	225.4	47.6	1.65	1.65
4" x 1"	325.5	273.1	52.4	2.10	1.65
4" x 1 1/2"	325.5	273.1	52.4	2.10	1.65
4" x 2"	274.7	273.1	52.4	2.10	1.65
4" x 2 1/2"	325.5	273.1	52.4	2.10	1.65
4" x 3"	325.5	273.1	52.4	2.10	1.65

No.SM0321031

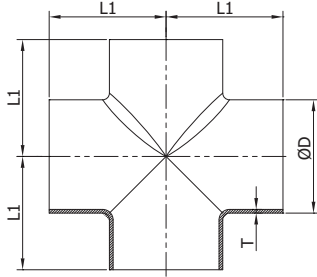


# 3A

## 1.2 卫生级管件 Sanitary Pipe-fittings



No.SM0321032

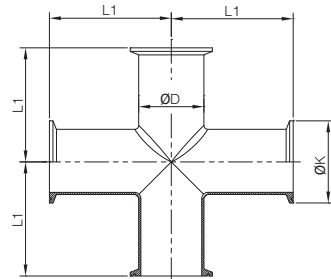


短型焊式四通  
Short-type Welded Cross

Size	L1	D	T
1"	28.6	25.4	1.65
1 1/4"	38.0	31.8	1.65
1 1/2"	42.05	38.1	1.65
2"	52.35	50.8	1.65
2 1/2"	59.55	63.5	1.65
3"	65.9	76.2	1.65
4"	87.35	101.6	2.1



No.SM0322033

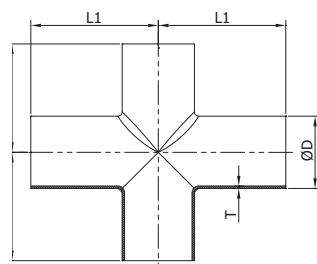


长型夹式四通  
Long-type Clamped Cross

Size	L1	K	D
1"	60.3	50.5	25.4
1 1/4"	60.4	50.5	31.8
1 1/2"	69.9	50.5	38.1
2"	88.9	64.0	50.8
2 1/2"	88.9	77.5	63.5
3"	95.3	91.0	76.2
4"	114.3	119.0	101.6



No.SM0321034



长型焊式四通  
Long-type Welded Cross

Size	L1	D	T
1"	47.6	25.4	1.65
1 1/4"	47.7	31.8	1.65
1 1/2"	57.2	38.1	1.65
2"	76.2	50.8	1.65
2 1/2"	76.2	63.5	1.65
3"	82.6	76.2	1.65
4"	98.4	101.6	2.1

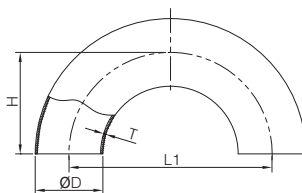
# 3A

## 1.2 卫生级管件 Sanitary Pipe-fittings

### 180° 焊式弯头 180° Welded Elbow

Size	L1	D	H	T
1"	76.2	25.4	38.1	1.65
1 1/2"	114.3	38.1	57.2	1.65
2"	152.4	50.8	76.2	1.65
2 1/2"	190.5	63.5	95.3	1.65
3"	228.6	76.2	114.3	1.65
4"	304.8	101.6	152.4	2.1

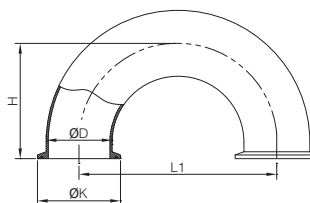
### No.SM0321035



### 180° 夹式弯头 180° Clamped Elbow

Size	L1	K	D	H
1"	76.2	50.5	25.4	50.8
1 1/2"	114.3	50.5	38.1	69.9
2"	152.4	64.0	50.8	88.9
2 1/2"	190.5	77.5	63.5	108.0
3"	228.6	91.0	76.2	127.0
4"	304.8	119.0	101.6	168.3

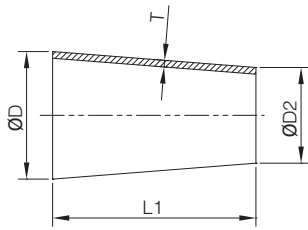
### No.SM0322036



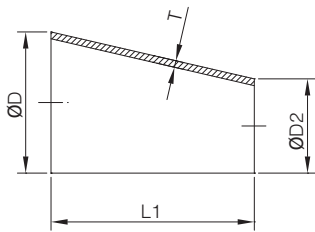


# 3A

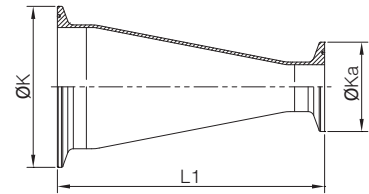
## 1.2 卫生级管件 Sanitary Pipe-fittings



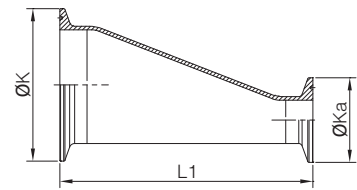
(同心 Concentric)



(偏心 Eccentric)



(同心 Concentric)



(偏心 Eccentric)

**No.SM0421037**

**No.SM0422038**

### 焊接式大小头 Welded Reducer

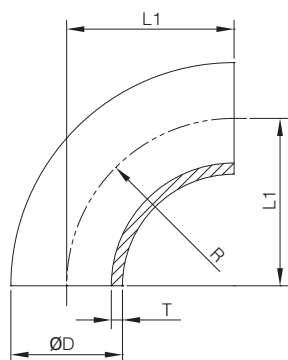
Size	L1	D	D2	T
1 1/2" 1"	50.8	38.1	25.4	1.65×1.65
2" 1"	101.6	50.8	25.4	1.65×1.65
2" 1 1/2"	50.8	50.8	38.1	1.65×1.65
2 1/2" 1 1/2"	101.6	63.5	38.1	1.65×1.65
2 1/2" 2"	50.8	63.5	50.8	1.65×1.65
3" 1 1/2"	152.4	76.2	38.1	1.65×1.65
3" 2"	101.6	76.2	50.8	1.65×1.65
3" 2 1/2"	50.8	76.2	63.5	1.65×1.65
4" 2"	203.2	101.6	50.8	2.1×1.65
4" 2 1/2"	152.4	101.6	63.5	2.1×1.65
4" 3"	101.6	101.6	76.2	2.1×1.65

### 夹式大小头 Clamped Reducer

Size	L1	K	Ka
1 1/2" 1"	76.2	50.5	50.5
2" 1"	127.0	64.0	50.5
2" 1 1/2"	76.2	64.0	50.5
2 1/2" 1 1/2"	127.0	77.5	50.5
2 1/2" 2"	76.2	77.5	64.0
3" 1 1/2"	177.8	91.0	50.5
3" 2"	127.0	91.0	64.0
3" 2 1/2"	76.2	91.0	77.5
4" 2"	231.8	119.0	64.0
4" 2 1/2"	181.0	119.0	77.5
4" 3"	130.2	119.0	91.0

# SMS

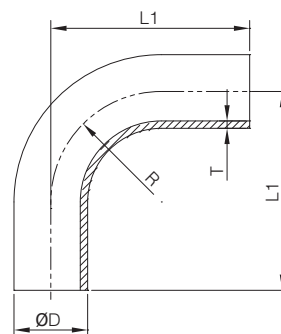
## 1.3 卫生级管件 Sanitary Pipe-fittings



No.SM0131039

90° 焊接式弯头  
90° Welded Elbow

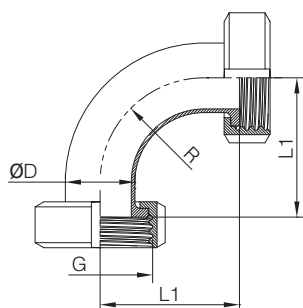
Size	L1	D	R	T-1	T-2
25	38.1	25.4	38.1	1.25	1.5
32	47.7	31.8	47.7	1.25	1.5
38	57.2	38.1	57.2	1.25	1.5
51	76.2	50.8	76.2	1.25	1.5
63	95.3	63.5	95.3	1.60	2.0
76	114.3	76.2	114.3	1.60	2.0
102	152.4	101.6	152.4	2.0	2.0



No.SM0131040

90° 加直端焊接式弯头  
90° Weleded  
Elbow With Straight Ends

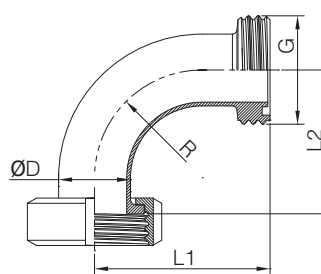
Size	L1	D	R	T-1	T-2
25	52.4	25.4	38.1	1.25	1.5
32	64.0	31.8	47.7	1.25	1.5
38	74.6	38.1	57.2	1.25	1.5
51	103.2	50.8	76.2	1.25	1.5
63	131.8	63.5	95.3	1.60	2.0
76	160.3	76.2	114.3	1.60	2.0
102	211.1	101.6	152.4	2.0	2.0



No.SM0134041

90° 两端螺母式弯头  
90° Nut-type Elbow

Size	L1	G	D	R
25	47.1	RD40x1/6	25.4	38.1
32	57.7	RD48x1/6	31.8	47.7
38	67.2	RD60x1/6	38.1	57.2
51	86.2	RD70x1/6	50.8	76.2
63	106.3	RD85x1/6	63.5	95.3
76	126.3	RD98x1/6	76.2	114.3
102	165.4	RD125x1/4	101.6	152.4



No.SM0134042

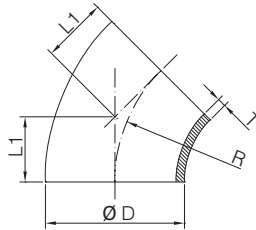
90° 外螺纹 - 螺母式弯头  
90° Male Nut-type Elbow

Size	L1	L2	G	D	R
25	53.1	47.1	RD40X1/6	25.4	38.1
32	63.7	57.7	RD48x1/6	31.8	47.7
38	77.2	67.2	RD60X1/6	38.1	57.2
51	96.2	86.2	RD70X1/6	50.8	76.2
63	117.3	106.3	RD85X1/6	63.5	95.3
76	137.3	126.3	RD98X1/6	76.2	114.3
102	178.4	165.4	RD125x1/4	101.6	152.4

**SMS**

### 1.3 卫生级管件 Sanitary Pipe-fittings

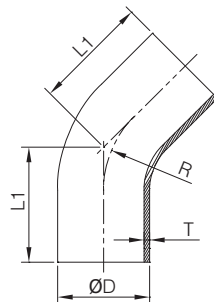
**No.SM0231043**



**45° 焊接式弯头  
45° Welded Elbow**

Size	L1	D	R	T-1	T-2
25	15.8	25.4	38.1	1.25	1.5
32	19.8	31.8	47.7	1.25	1.5
38	23.7	38.1	57.2	1.25	1.5
51	31.6	50.8	76.2	1.25	1.5
63	39.5	63.5	95.3	1.6	2.0
76	47.3	76.2	114.3	1.6	2.0
102	63.1	101.6	152.4	2.0	2.0

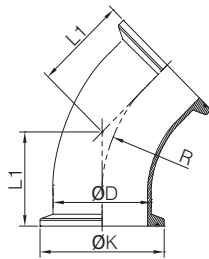
**No.SM0231044**



**45° 加长焊接式弯头  
45° Welded Elbow  
With Straight Ends**

Size	L1	D	R	T-1	T-2
25	30.2	25.4	38.1	1.25	1.5
32	35.8	31.8	47.7	1.25	1.5
38	41.3	38.1	57.2	1.25	1.5
51	58.7	50.8	76.2	1.25	1.5
63	76.2	63.5	95.3	1.6	2.0
76	93.7	76.2	114.3	1.6	2.0
102	122.2	101.6	152.4	2.0	2.0

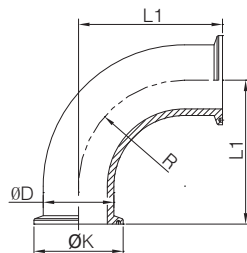
**No.SM0232045**



**45° 夹式弯头  
45° Clamped Elbow**

Size	L1	K	D	R
25	28.5	50.5	25.4	38.1
32	32.5	50.5	31.8	47.7
38	36.4	50.5	38.1	57.2
51	44.3	64.0	50.8	76.2
63	52.2	77.5	63.5	95.3
76	60.0	91.0	76.2	114.3
102	79.0	119.0	101.6	152.4

**No.SM0132046**



**90° 夹式弯头  
90° Clamped Elbow**

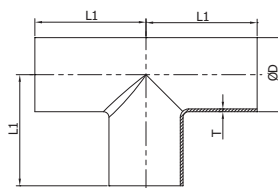
Size	L1	K	D	R
25	50.8	50.5	25.4	38.1
32	60.4	50.5	31.8	47.7
38	69.9	50.5	38.1	57.2
51	88.9	64.0	50.8	76.2
63	108.0	77.5	63.5	95.3
76	127.0	91.0	76.2	114.3
102	168.3	119.0	101.6	152.4

**SMS**

### 1.3 卫生级管件 Sanitary Pipe-fittings

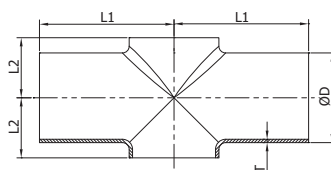
焊接式三通 Welded Tee				
Size	L1	D	T-1	T-2
25	55.0	25.4	1.25	1.5
32	55.0	31.8	1.25	1.5
38	70.0	38.1	1.25	1.5
51	82.0	50.8	1.25	1.5
63	105.0	63.5	1.6	2.0
76	110.0	76.2	1.6	2.0
102	150.0	101.6	2.0	2.0

No.SM0331047



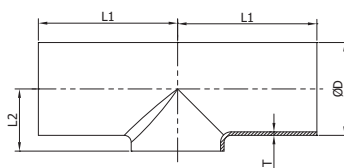
焊接式四通 Welded Cross				
Size	L1	L2	D	T
25	55.0	14.5	25.4	1.5
32	55.0	18.0	31.8	1.5
38	70.0	21.5	38.1	1.5
51	82.0	29.5	50.8	1.5
63	105.0	36.0	63.5	2.0
76	110.0	43.0	76.2	2.0
102	150.0	57.0	101.6	2.0

No.SM0331048



短焊三通 Short-type Welded Tee				
Size	L1	L2	D	T
25	55.0	14.5	25.4	1.5
32	55.0	18.0	31.8	1.5
38	70.0	21.5	38.1	1.5
51	82.0	29.5	50.8	1.5
63	105.0	36.0	63.5	2.0
76	110.0	43.0	76.2	2.0
102	150.0	57.0	101.6	2.0

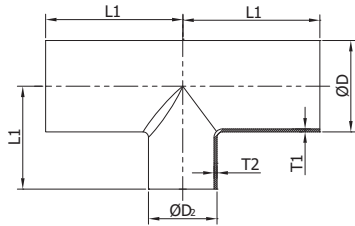
No.SM0331049



**SMS**

### 1.3 卫生级管件 Sanitary Pipe-fittings

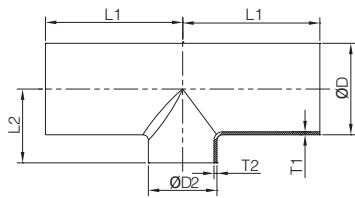
**No.SM0331051**



**长型变径焊接三通  
Long-type  
Reducing Welded Tee**

Size		L1	D	D2	T1	T2
32	25	55.0	31.8	25.4	1.5	1.5
38	25	70.0	38.1	25.4	1.5	1.5
38	32	70.0	38.1	31.8	1.5	1.5
51	32	82.0	50.8	31.8	1.5	1.5
51	38	82.0	50.8	38.1	1.5	1.5
63	51	105.0	63.5	50.8	2.0	1.5
76	51	110.0	76.2	50.8	2.0	1.5
76	63	110.0	76.2	63.5	2.0	2.0
102	51	150.0	101.6	50.8	2.0	1.5
102	63	150.0	101.6	63.5	2.0	2.0
102	76	150.0	101.6	76.2	2.0	2.0

**No.SM0331050**



**短型变径焊接三通  
Short-type  
Reducing Welded Tee**

Size		L1	L2	D	D2	T1	T2
32	25	55.0	38.1	31.8	25.4	1.5	1.5
38	25	70.0	38.1	38.1	25.4	1.5	1.5
38	32	70.0	45.5	38.1	31.8	1.5	1.5
51	32	82.0	45.5	50.8	31.8	1.5	1.5
51	38	82.0	57.2	50.8	38.1	1.5	1.5
63	51	105.0	76.2	63.5	50.8	2.0	1.5
76	51	110.0	76.2	76.2	50.8	2.0	1.5
76	63	110.0	95.3	76.2	63.5	2.0	2.0
102	51	150.0	76.2	101.6	50.8	2.0	1.5
102	63	150.0	95.3	101.6	63.5	2.0	2.0
102	76	150.0	114.3	101.6	76.2	2.0	2.0

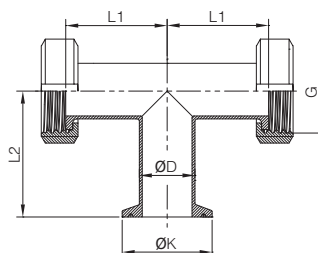
**SMS**

### 1.3 卫生级管件 Sanitary Pipe-fittings

**两端螺母一端快装式三通  
Two Side Nut-type  
One Side Clamped Tee**

Size	L1	L2	K	D	G
25	64.0	67.7	50.5	25.4	RD40x1/6
32	65.0	67.7	50.5	31.8	RD48x1/6
38	80.0	82.7	50.5	38.1	RD60x1/6
51	92.0	94.7	64.0	50.8	RD70x1/6
63	116.0	117.7	77.5	63.5	RD85x1/6
76	122.0	122.7	91.0	76.2	RD98x1/6
102	163.0	165.9	119.0	101.6	RD125x1/4

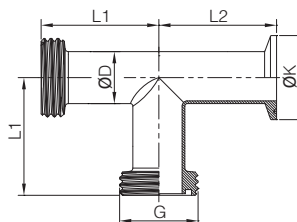
**No.SM0334052**



**两端螺纹一端快装式三通  
Two Side Threaded  
One Side Clamped Tee**

Size	L1	L2	K	D	G
25	70.0	67.7	50.5	25.4	RD40x1/6
32	71.0	67.7	50.5	31.8	RD48x1/6
38	90.0	82.7	50.5	38.1	RD60x1/6
51	102.0	94.7	64.0	50.8	RD70x1/6
63	127.0	117.7	77.5	63.5	RD85x1/6
76	133.0	122.7	91.0	76.2	RD98x1/6
102	176.0	165.9	119.0	101.6	RD125x1/4

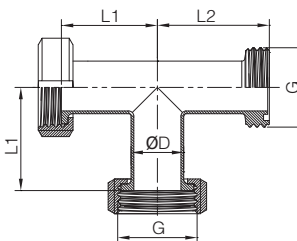
**No.SM0333053**



**一端螺纹两端螺母式三通  
One Side Threaded  
Two Side Nut-type Tee**

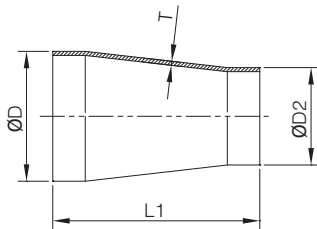
Size	L1	L2	D	G
25	64.0	70.0	25.4	RD40x1/6
32	65.0	71.0	31.8	RD48x1/6
38	80.0	90.0	38.1	RD60x1/6
51	92.0	102.0	50.8	RD70x1/6
63	116.0	127.0	63.5	RD85x1/6
76	122.0	133.0	76.2	RD98x1/6
102	163.0	176.0	101.6	RD125x1/4

**No.SM0333054**

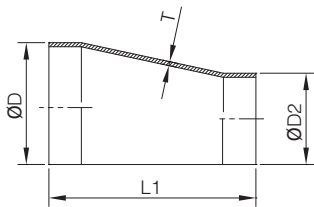


**SMS**

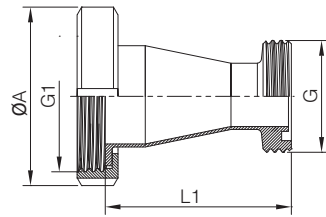
### 1.3 卫生级管件 Sanitary Pipe-fittings



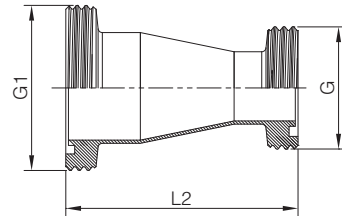
(同心-Concentric)



(偏心-Eccentric)



(单螺纹单螺母 Threaded/nut)



(螺纹式 Threaded)

**No.SM0431055**

**Welded Tee  
加直端焊接式大小头  
Welded Reducer  
With Straight Ends**

Size	L1	D	D2	T	
38	25	39.0	38.1	25.4	1.5/1.5
51	25	57.0	50.8	25.4	1.5/1.5
51	38	39.0	50.8	38.1	1.5/1.5
63	38	57.0	63.5	38.1	2.0/1.5
63	51	39.0	63.5	50.8	2.0/1.5
76	38	74.0	76.2	38.1	2.0/1.5
76	51	57.0	76.2	50.8	2.0/1.5
76	63	39.0	76.2	63.5	2.0/2.0
102	51	95.0	101.6	50.8	2.0/1.5
102	63	78.0	101.6	63.5	2.0/2.0
102	76	60.0	101.6	76.2	2.0/2.0

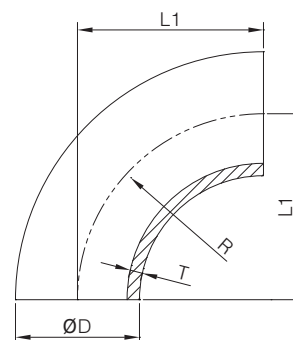
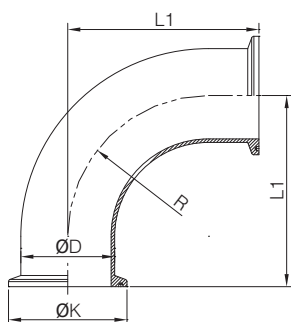
**No.SM0435056**

**由任式大小头  
Union-type Reducer**

Size	L1	G	G1	A	L2
38	25	64.0	RD40x1/6	RD60x1/6	72.0 74.0
51	25	82.0	RD40x1/6	RD70x1/6	82.0 92.0
51	38	69.0	RD60x1/6	RD70x1/6	82.0 79.0
63	38	88.0	RD60x1/6	RD85x1/6	98.0 99.0
63	51	70.0	RD70x1/6	RD85x1/6	98.0 81.0
76	38	106.0	RD60x1/6	RD98x1/6	112.0 117.0
76	51	89.0	RD70x1/6	RD98x1/6	112.0 100.0
76	63	73.0	RD85x1/6	RD98x1/6	112.0 84.0
102	51	128.0	RD70x1/6	RD125x1/4	138.0 141.0
102	63	113.0	RD85x1/6	RD125x1/4	138.0 126.0
102	76	96.0	RD98x1/6	RD125x1/4	138.0 109.0

# ISO/IDF

## 1.4 卫生级管件 Sanitary Pipe-fittings



**No.SM0142057**

90° 夹式弯头 90° Clamped Elbow				
Size	L1	K	D	R
Ø25	54.5	50.5	25.4	33.5
Ø32	59.0	50.5	31.8	38.0
Ø38	69.5	50.5	38.1	48.5
Ø51	81.5	64.0	50.8	60.5
Ø63	104.5	77.5	63.5	83.5
Ø76	109.5	91.0	76.2	88.5
Ø89	124.5	106.0	89.0	103.5
Ø102	148.0	119.0	101.6	127.0

**No.SM0141058**

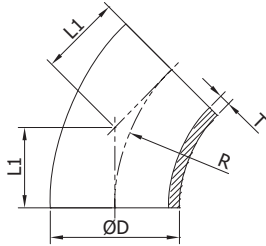
90° 焊接式弯头 90° Welded Elbow				
Size	L1	D	R	T
Ø25	33.5	25.4	33.5	1.5
Ø32	38.0	31.8	38.0	1.5
Ø38	48.5	38.1	48.5	1.5
Ø51	60.5	50.8	60.5	1.5
Ø63	83.5	63.5	83.5	2.0
Ø76	88.5	76.2	88.5	2.0
Ø89	103.5	89.0	103.5	2.0
Ø102	127.0	101.6	127.0	2.0
Ø127	190.5	127.0	190.5	2.0
Ø152	228.6	152.4	228.6	2.0



# ISO/IDF

## 1.4 卫生级管件 Sanitary Pipe-fittings

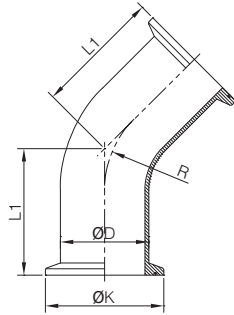
No.SM0241059



45° 焊接式弯头  
45° Welded Elbow

Size	L1	D	R	T
Ø25	13.9	25.4	33.5	1.5
Ø32	15.7	31.8	38.0	1.5
Ø38	20.1	38.1	48.5	1.5
Ø51	25.1	50.8	60.5	1.5
Ø63	34.6	63.5	83.5	2.0
Ø76	36.7	76.2	88.5	2.0
Ø89	42.9	89.0	103.5	2.0
Ø102	52.6	101.6	127.0	2.0

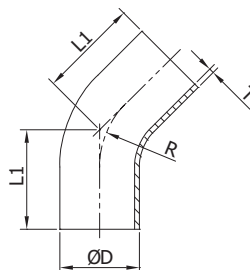
No.SM0242060



45° 夹式弯头  
45° Clamped Elbow

Size	L1	K	D	R
Ø25	34.9	50.5	25.4	33.5
Ø32	36.7	50.5	31.8	38.0
Ø38	41.1	50.5	38.1	48.5
Ø51	46.1	64.0	50.8	60.5
Ø63	55.6	77.5	63.5	83.5
Ø76	57.7	91.0	76.2	88.5
Ø89	63.9	106.0	89.0	103.5
Ø102	73.6	119.0	101.6	127.0

No.SM0241061



45° 加长焊接式弯头  
45° Welded Elbow  
With Straight Ends

Size	L1	D	R	T
Ø25	30.2	25.4	33.5	1.5
Ø38	41.3	38.1	48.5	1.5
Ø51	58.7	50.8	60.5	1.5
Ø63	76.2	63.5	83.5	2.0
Ø76	93.7	76.2	88.5	2.0
Ø102	122.2	101.6	127.0	2.0

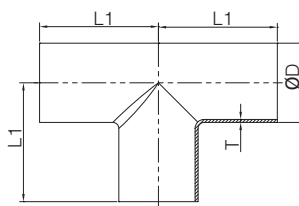
# ISO/IDF

## 1.4 卫生级管件 Sanitary Pipe-fittings

### 焊接式三通 Welded Tee

Size	L1	D	T	L1(短型)
Ø25	33.5	25.4	1.5	33.5
Ø32	38.0	31.8	1.5	38.0
Ø38	48.5	38.1	1.5	48.5
Ø51	60.5	50.8	1.5	60.5
Ø63	83.5	63.5	2.0	67.5
Ø76	88.5	76.2	2.0	77.0
Ø89	103.5	89.0	2.0	86.0
Ø102	127.0	101.6	2.0	100.0

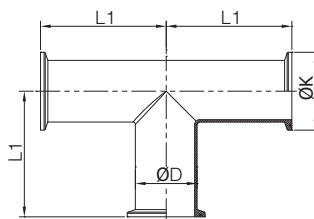
### No.SM0341062



### 夹式三通 Clamped Tee

Size	L1	K	D	L1(短型)
Ø25	54.5	50.5	25.4	54.5
Ø32	59.0	50.5	31.8	59.0
Ø38	69.5	50.5	38.1	69.5
Ø51	81.5	64.0	50.8	81.5
Ø63	104.5	77.5	63.5	88.5
Ø76	109.5	91.0	76.2	98.0
Ø89	124.5	106.0	89.0	107.0
Ø102	148.0	119.0	101.6	121.0

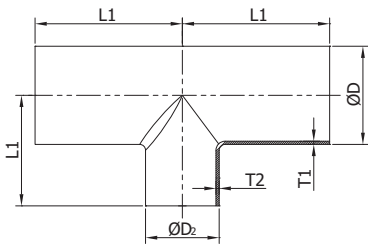
### No.SM0342063



# ISO/IDF

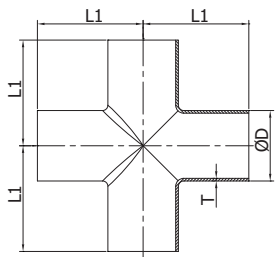
## 1.4 卫生级管件 Sanitary Pipe-fittings

No.SM0341065



变径焊接三通  
Reducing Welded Tee

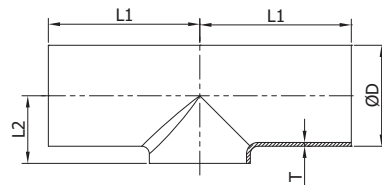
Size		L1	D	D2	T1	T2	L1(短型)
Ø32	Ø25	38.0	31.8	25.4	1.5	1.5	38.0
Ø38	Ø25	48.5	38.1	25.4	1.5	1.5	48.5
Ø38	Ø32	48.5	38.1	31.8	1.5	1.5	48.5
Ø51	Ø32	60.5	50.8	31.8	1.5	1.5	60.5
Ø51	Ø38	60.5	50.8	38.1	1.5	1.5	60.5
Ø63	Ø51	83.5	63.5	50.8	2.0	1.5	67.5
Ø76	Ø51	88.5	76.2	50.8	2.0	1.5	77.0
Ø76	Ø63	88.5	76.2	63.5	2.0	2.0	77.0
Ø102	Ø51	127.0	101.6	50.8	2.0	1.5	100.0
Ø102	Ø63	127.0	101.6	63.5	2.0	2.0	100.0
Ø102	Ø76	127.0	101.6	76.2	2.0	2.0	100.0



No.SM0341064

焊接式四通  
Welded Cross

Size	L1	D	T	L1(短型)
Ø25	33.5	25.4	1.5	33.5
Ø32	38.0	31.8	1.5	38.0
Ø38	48.5	38.1	1.5	48.5
Ø51	60.5	50.8	1.5	60.5
Ø63	83.5	63.5	2.0	67.5
Ø76	88.5	76.2	2.0	77.0
Ø89	103.5	89.0	2.0	86.0
Ø102	127.0	101.6	2.0	100.0



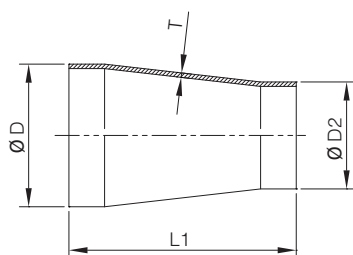
No.SM0341066

短焊三通  
Shotr-type Welded Tee

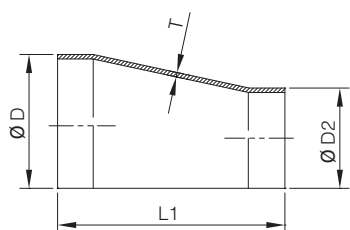
Size	L1	L2	D	T	L1(短型)
Ø25	33.5	14.7	25.4	1.5	33.5
Ø32	38.0	18.0	31.8	1.5	38.0
Ø38	48.5	21.0	38.1	1.5	48.5
Ø51	60.5	27.4	50.8	1.5	60.5
Ø63	83.5	34.8	63.5	2.0	67.5
Ø76	88.5	41.1	76.2	2.0	77.0
Ø89	103.5	47.5	89.0	2.0	86.0
Ø102	127.0	53.8	101.6	2.0	100.0

# ISO/IDF

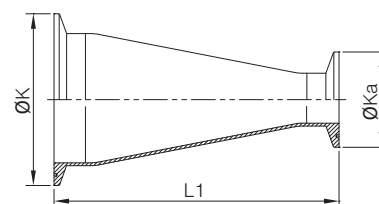
## 1.4 卫生级管件 Sanitary Pipe-fittings



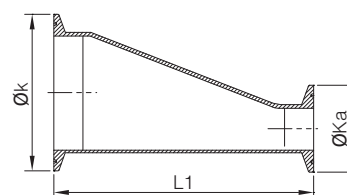
(同心Concentric)



(偏心Eccentric)



(同心Concentric)



(偏心Eccentric)

### No.SM0441067

加直端式焊接式大小头 Welded Reducer With Straight Ends					
Size		L1	D	D2	T
Ø25	Ø19	38.0	25.4	19.05	1.5X1.5
Ø32	Ø25	50.0	31.8	25.4	1.5X1.5
Ø38	Ø32	50.0	38.1	31.8	1.5X1.5
Ø38	Ø25	50.0	38.1	25.4	1.5X1.5
Ø51	Ø38	67.0	50.8	38.1	1.5X1.5
Ø51	Ø32	67.0	50.8	31.8	1.5X1.5
Ø51	Ø25	67.0	50.8	25.4	1.5X1.5
Ø63	Ø51	67.0	63.5	50.8	2.0X1.5
Ø63	Ø38	67.0	63.5	38.1	2.0X1.5
Ø63	Ø25	67.0	63.5	25.4	2.0X1.5
Ø76	Ø63	67.0	76.2	63.5	2.0X2.0
Ø76	Ø51	67.0	76.2	50.8	2.0X1.5
Ø76	Ø38	67.0	76.2	38.1	2.0X1.5
Ø89	Ø76	67.0	89.0	76.2	2.0X2.0
Ø89	Ø63	67.0	89.0	63.5	2.0X2.0
Ø89	Ø51	67.0	89.0	50.8	2.0X1.5
Ø102	Ø89	87.0	101.6	89.0	2.0X2.0
Ø102	Ø76	87.0	101.6	76.2	2.0X2.0
Ø102	Ø63	87.0	101.6	63.5	2.0X2.0
Ø102	Ø51	87.0	101.6	50.8	2.0X1.5

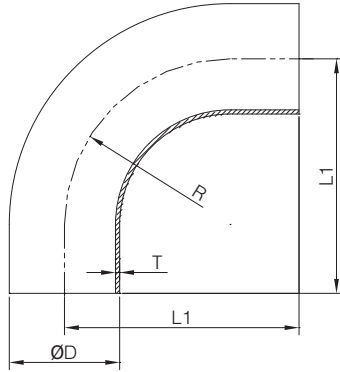
### No.SM0442068

夹式大小头 Clamped Reducer				
Size		L1	K	Ka
Ø25	Ø19	80.0	50.5	34.0
Ø32	Ø25	92.0	50.5	50.5
Ø38	Ø32	92.0	50.5	50.5
Ø38	Ø25	92.0	50.5	50.5
Ø51	Ø38	109.0	64.0	50.5
Ø51	Ø32	109.0	64.0	50.5
Ø51	Ø25	109.0	64.0	50.5
Ø63	Ø51	109.0	77.5	64.0
Ø63	Ø38	109.0	77.5	50.5
Ø63	Ø25	109.0	77.5	50.5
Ø76	Ø63	109.0	91.0	77.5
Ø76	Ø51	109.0	91.0	64.0
Ø76	Ø38	109.0	91.0	50.5
Ø89	Ø76	109.0	106.0	91.0
Ø89	Ø63	109.0	106.0	77.5
Ø89	Ø51	109.0	106.0	64.0
Ø102	Ø89	129.0	119.0	106.0
Ø102	Ø76	129.0	119.0	91.0
Ø102	Ø63	129.0	119.0	77.5
Ø102	Ø51	129.0	119.0	64.0

# BS4825

## 1.5 卫生级管件 Sanitary Pipe-fittings

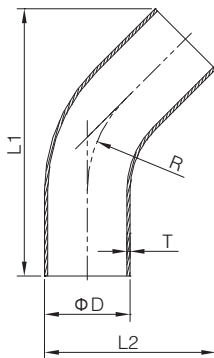
No.SM0161069



90° 焊接式弯头  
90° Welded Elbow

Size	L1	D	R	T
1"	65.0	25.4	38.1	1.6
1 1/2"	85.0	38.1	57.2	1.6
2"	110.0	50.8	76.2	1.6
2 1/2"	135.0	63.5	95.3	1.6
3"	155.0	76.2	114.3	1.6
4"	195.0	101.6	152.4	2.0

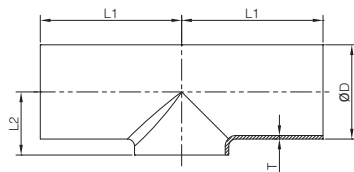
No.SM0261070



45° 焊接式弯头  
45° Welded Elbow

Size	L1	L2	D	R	T
1"	108.1	62.7	25.4	38.1	1.6
1 1/2"	127.2	79.6	38.1	57.2	1.6
2"	146.3	96.5	50.8	76.2	1.6
2 1/2"	165.8	113.6	63.5	95.3	1.6
3"	185.0	130.5	76.2	114.3	1.6
4"	223.1	164.3	101.6	152.4	2.0

No.SM0361071



短焊三通  
Short-type Welded Tee

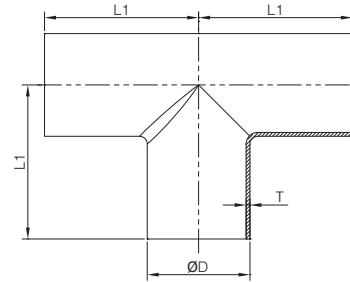
Size	L1	L2	D	T
1"	44.0	14.3	25.4	1.6
1 1/2"	64.0	21.6	38.1	1.6
2"	89.0	28.9	50.8	1.6
2 1/2"	114.0	35.3	63.5	1.6
3"	134.0	43.1	76.2	1.6
4"	195.0	56.2	101.6	2.0

# BS4825

## 1.5 卫生级管件 Sanitary Pipe-fittings

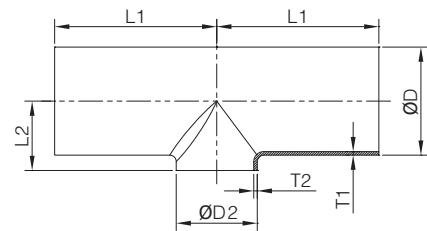
焊接式三通 Welded Tee			
Size	L1	D	T
1"	44.0	25.4	1.6
1 1/2"	64.0	38.1	1.6
2"	89.0	50.8	1.6
2 1/2"	114.0	63.5	1.6
3"	134.0	76.2	1.6
4"	195.0	101.6	2.0

No.SM0361072



短型变径焊接三通 Short-type Reducing Welded Tee							
Size		L1	L2	D	D2	T1	T2
1"	1/2"	44.0	14.3	25.4	12.7	1.6	1.6
1 1/2"	1/2"	75.0	21.6	38.1	12.7	1.6	1.6
1 1/2"	1"	75.0	21.6	38.1	25.4	1.6	1.6
2"	1/2"	89.0	28.9	50.8	12.7	1.6	1.6
2"	1"	89.0	28.9	50.8	25.4	1.6	1.6
2"	1 1/2"	89.0	28.9	50.8	38.1	1.6	1.6
2 1/2"	1/2"	95.0	35.3	63.5	12.7	1.6	1.6
2 1/2"	1"	95.0	35.3	63.5	25.4	1.6	1.6
2 1/2"	1 1/2"	95.0	35.3	63.5	38.1	1.6	1.6
2 1/2"	2"	95.0	35.3	63.5	50.8	1.6	1.6
3"	1/2"	95.0	43.1	76.2	12.7	1.6	1.6
3"	1"	95.0	43.1	76.2	25.4	1.6	1.6
3"	1 1/2"	95.0	43.1	76.2	38.1	1.6	1.6
3"	2"	95.0	43.1	76.2	50.8	1.6	1.6
3"	2 1/2"	95.0	43.1	76.2	63.5	1.6	1.6
4"	1/2"	127.0	56.2	101.6	12.7	2.0	1.6
4"	1"	127.0	56.2	101.6	25.4	2.0	1.6
4"	1 1/2"	127.0	56.2	101.6	38.1	2.0	1.6
4"	2"	127.0	56.2	101.6	50.8	2.0	1.6
4"	2 1/2"	127.0	56.2	101.6	63.5	2.0	1.6
4"	3"	127.0	56.2	101.6	76.2	2.0	1.6

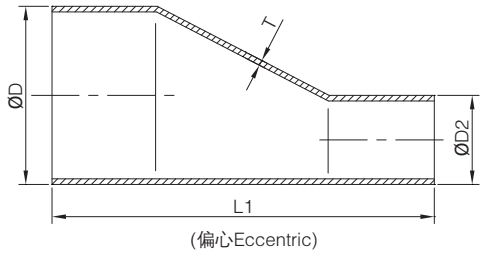
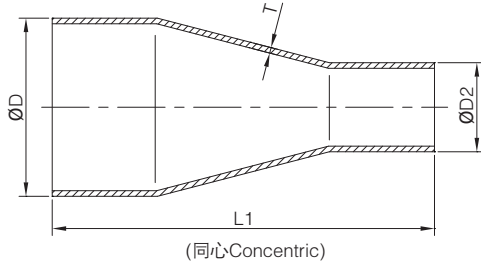
No.SM0361073



# BS4825

## 1.5 卫生级管件 Sanitary Pipe-fittings

No.SM0461074



加直端式焊接式大小头  
Welded Reducer With Straight Ends

Size		L1	D	D2	T
1 1/2"	1"	99.0	38.1	25.4	1.6 x1.6
2"	1"	117.0	50.8	25.4	1.6 x1.6
2"	1 1/2"	99.0	50.8	38.1	1.6 x1.6
2 1/2"	1 1/2"	117.0	63.5	38.1	1.6 x1.6
2 1/2"	2"	99.0	63.5	50.8	1.6 x1.6
3"	1 1/2"	134.0	76.2	38.1	1.6 x1.6
3"	2"	117.0	76.2	50.8	1.6 x1.6
3"	2 1/2"	99.0	76.2	63.5	1.6 x1.6
4"	2"	155.0	101.6	50.8	2.0 x1.6
4"	2 1/2"	138.0	101.6	63.5	2.0 x1.6
4"	3"	120.0	101.6	76.2	2.0 x1.6



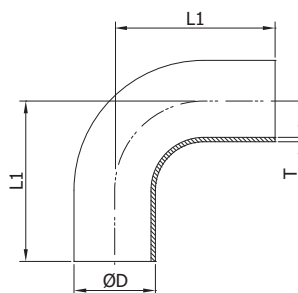
# BPE

## 1.6 卫生级管件 Sanitary Pipe-fittings

### 90° 焊接式弯头 90° Welded Elbow

Size	L1	D	T
1"	76.2	25.4	1.65
1 1/2"	95.3	38.1	1.65
2"	120.7	50.8	1.65
2 1/2"	139.7	63.5	1.65
3"	158.8	76.2	1.65
4"	203.2	101.6	2.1
6"	292.1	152.4	2.8

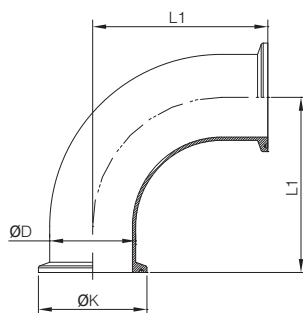
### No.SM0171075



### 90° 夹式弯头 90° Clamped Elbow

Size	L1	K	D
1"	50.8	50.5	25.4
1 1/2"	69.9	50.5	38.1
2"	88.9	64.0	50.8
2 1/2"	108.0	77.5	63.5
3"	127.0	91.0	76.2
4"	168.3	119.0	101.6
6"	266.7	166.8	152.4

### No.SM0172076

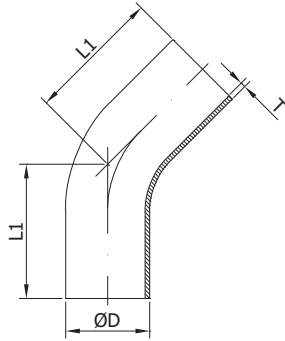




# BPE

## 1.6 卫生级管件 Sanitary Pipe-fittings

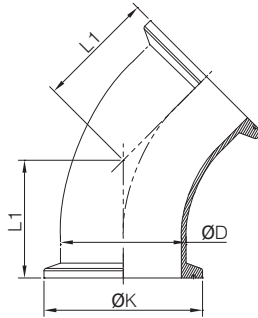
No.SM0271077



45° 焊接弯头  
45° Welded Elbow

Size	L1	D	T
1"	57.2	25.4	1.65
1 1/2"	63.5	38.1	1.65
2"	76.2	50.8	1.65
2 1/2"	85.7	63.5	1.65
3"	92.1	76.2	1.65
4"	114.3	101.6	2.1
6"	158.8	152.4	2.8

No.SM0272078



45° 夹式弯头  
45° Clamped Elbow

Size	L1	K	D
1"	28.6	50.5	25.4
1 1/2"	36.5	50.5	38.1
2"	44.5	64.0	50.8
2 1/2"	52.4	77.5	63.5
3"	60.3	91.0	76.2
4"	79.4	119.0	101.6
6"	133.4	166.8	152.4

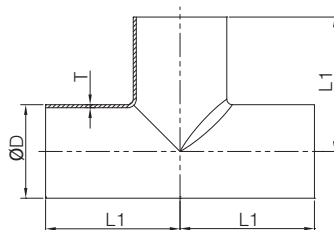
# BPE

## 1.6 卫生级管件 Sanitary Pipe-fittings

### 焊接三通 Welded Tee

Size	L1	D	T
1"	54.0	25.4	1.65
1 1/2"	60.3	38.1	1.65
2"	73.0	50.8	1.65
2 1/2"	79.4	63.5	1.65
3"	85.7	76.2	1.65
4"	104.8	101.6	2.1
6"	142.9	152.4	2.8

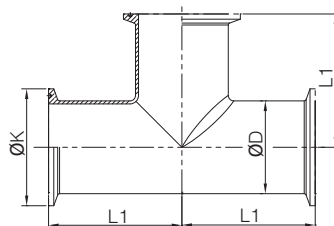
### No.SM0371079



### 夹式三通 Clamped Tee

Size	L1	K	D
1"	66.7	50.5	25.4
1 1/2"	73.0	50.5	38.1
2"	85.7	64.0	50.8
2 1/2"	92.1	77.5	63.5
3"	98.4	91.0	76.2
4"	120.7	119.0	101.6
6"	181.0	166.8	152.4

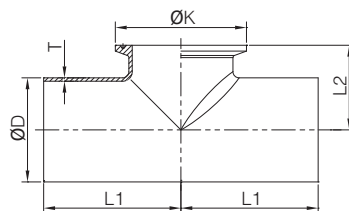
### No.SM0372080



### 短型夹式焊接三通 Short-type Clamped Welded Tee

Size	L1	L2	K	D	T
1"	54.0	28.6	50.5	25.4	1.65
1 1/2"	60.3	34.9	50.5	38.1	1.65
2"	73.0	41.3	64.0	50.8	1.65
2 1/2"	79.4	47.6	77.5	63.5	1.65
3"	85.7	54.0	91.0	76.2	1.65
4"	104.8	69.9	119.0	101.6	2.1
6"	142.9	117.5	166.8	152.4	2.8

### No.SM0372081

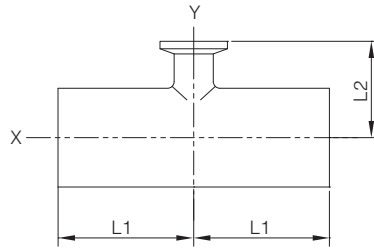


# BPE

## 1.6 卫生级管件 Sanitary Pipe-fittings



No.SM0372082

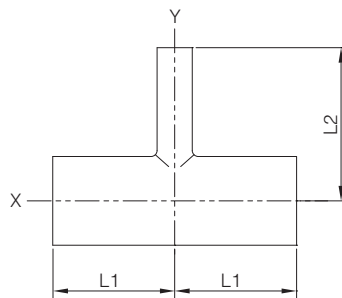


短型夹式变径三通  
Short-type  
Clamped Reducing Tee

Size		L1	L2
X	Y		
1 1/2"	3/4"	60.3	34.9
1 1/2"	1"	60.3	34.9
2"	1/2"	73.0	41.3
2"	3/4"	73.0	41.3
2"	1"	73.0	41.3
2"	1 1/2"	73.0	41.3
2 1/2"	1/2"	79.4	47.6
2 1/2"	3/4"	79.4	47.6
2 1/2"	1"	79.4	47.6
2 1/2"	1 1/2"	79.4	47.6
2 1/2"	2"	79.4	47.6
3"	1"	85.7	54.0
4"	1"	104.8	66.7
4"	2"	104.8	66.7
6"	3"	142.9	92.1
6"	4"	142.9	95.3



No.SM0371083



焊接变径三通  
Welded Reducing Tee

Size		L1	L2
X	Y		
1 1/2"	1"	60.3	60.3
2"	1"	73.0	66.7
2"	2 1/2"	73.0	66.7
2 1/2"	1"	79.4	73.0
2 1/2"	2"	79.4	73.0
3"	1"	85.7	79.4
3"	2"	85.7	79.4
3"	2 1/2"	85.7	79.4
4"	1"	104.8	92.1
4"	2"	104.8	98.4
4"	3"	104.8	98.4
6"	3"	142.9	123.8
6"	4"	142.9	130.2

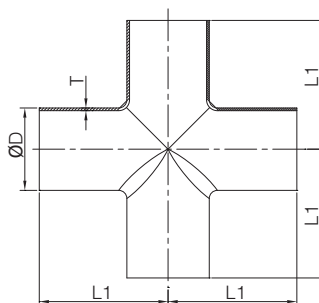
# BPE

## 1.6 卫生级管件 Sanitary Pipe-fittings

### 焊接四通 Welded Cross

Size	L1	D	T
1"	54.0	25.4	1.65
1 1/2"	60.3	38.1	1.65
2"	73.0	50.8	1.65
2 1/2"	79.4	63.5	1.65
3"	85.7	76.2	1.65
4"	104.8	101.6	2.1
6"	142.9	152.4	2.8

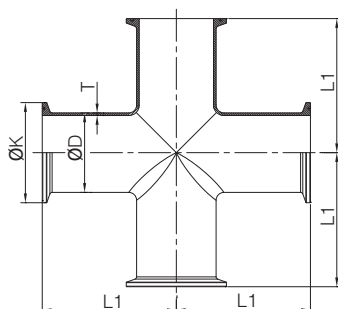
No.SM0371084



### 夹式四通 Clamped Cross

Size	L1	K	D	T
1"	66.7	50.5	25.4	1.65
1 1/2"	73.0	50.5	38.1	1.65
2"	85.7	64.0	50.8	1.65
2 1/2"	92.1	77.5	63.5	1.65
3"	98.4	91.0	76.2	1.65
4"	120.7	119.0	101.6	2.1
6"	181.0	166.8	152.4	2.8

No.SM0372085

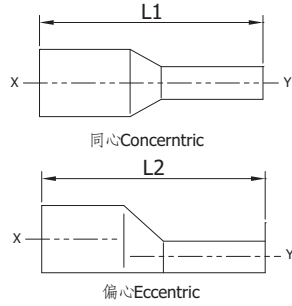


# BPE

## 1.6 卫生级管件 Sanitary Pipe-fittings



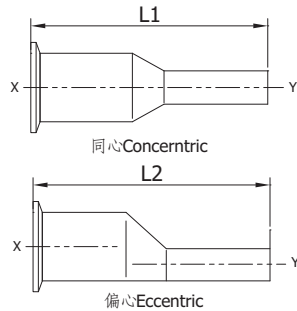
No.SM0471087



焊接式大小头  
Welded Reducer

Size		L1	L2	Size		L1	L2
X	Y			X	Y		
1 1/2"	1"	127.0	127.0	4"	2"	298.5	298.5
2"	1"	184.2	184.2	6"	3"	254.0	247.7
2"	1 1/2"	133.4	133.4	6"	4"	254.0	254.0
2 1/2"	2"	139.7	139.7				
3"	1"	285.8	285.8				
4"	1"	393.7	393.7				

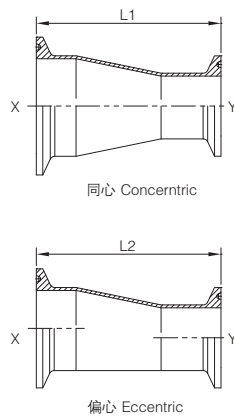
No.SM0472188



夹式大小头  
Clamped Reducer

Size		L1	L2	Size		L1	L2
X	Y			X	Y		
1"	3/4"	76.2	76.2	4"	1"	358.8	358.8
2"	1"	152.4	152.4	4"	2"	263.5	263.5
2"	1 1/2"	101.6	101.6	6"	3"	228.6	222.3
2 1/2"	1 1/2"	152.4	152.4				
2 1/2"	2"	107.9	108	6"	4"	228.6	228.6
3"	1"	254.0	254.0				

No.SM0472089



夹式大小头  
Clamped Reducer

Size		L1	L2	Size		L1	L2
X	Y			X	Y		
1"	3/4"	50.8	50.8	3"	1"	228.6	228.6
1 1/2"	1"	76.2	76.2	4"	1"	333.4	333.4
2"	1"	127.0	127.0	4"	2"	231.8	231.8
2"	1 1/2"	76.2	76.2	6"	3"	193.7	190.5
2 1/2"	1 1/2"	127.0	127.0	6"	4"	193.7	193.7
2 1/2"	2"	76.2	76.2				