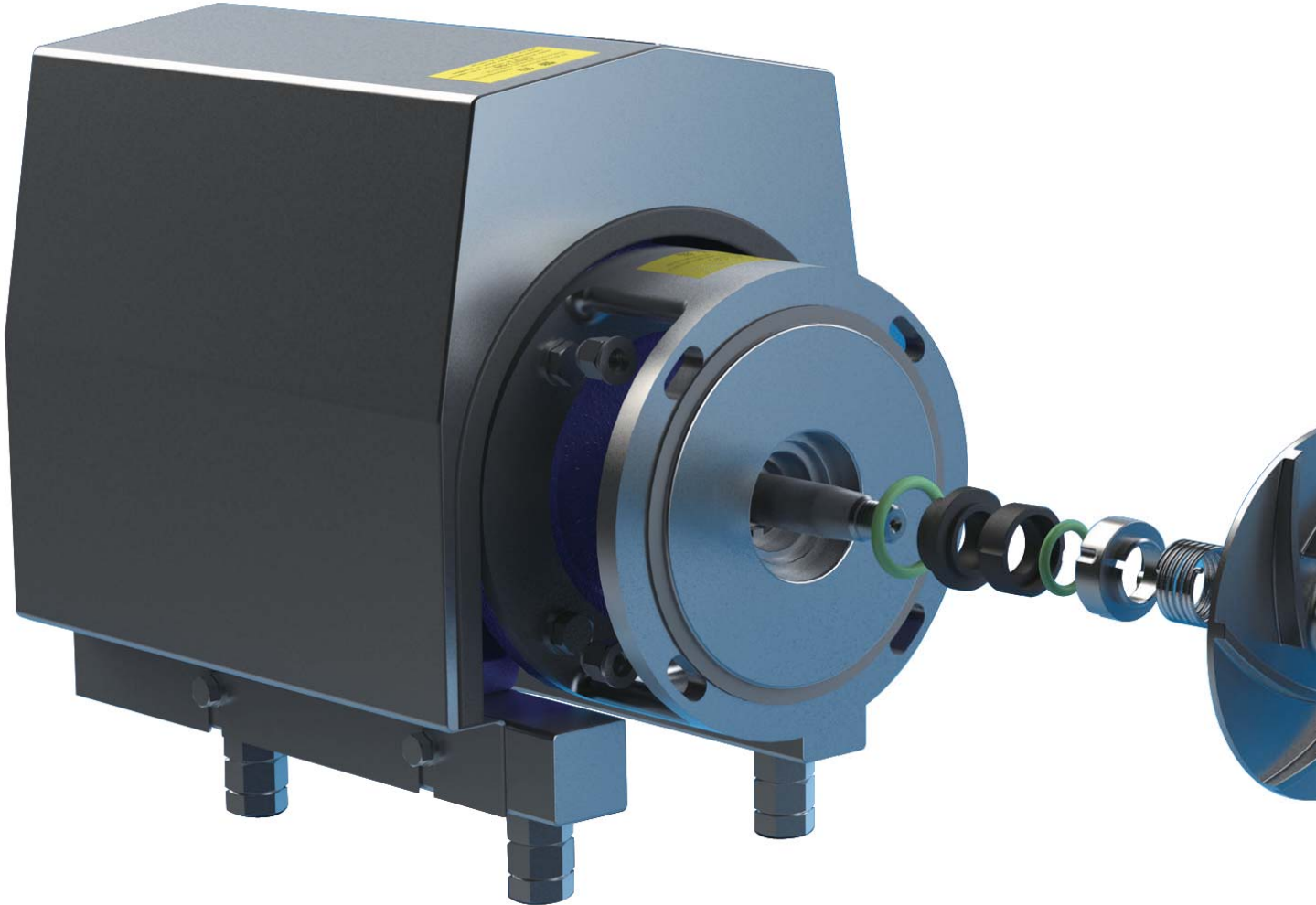




Sanitary Pumps

卫生级泵系列

卫生级离心泵 Sanitary Centrifugal Pumps



应用：

BAW 离心泵是一种高效又经济的泵，因它既可以满足卫生级对产品进行柔和处理的要求，又具有化学稳定性，所以它适用于大部分卫生行业领域。

Application:

BAW Centrifugal pump is an efficient and economical pump both due to meeting the requirements of the health and gentle handling of product and to its chemical stability. It is applies to most fields of the sanitary industry.

设计标准

BAW 离心泵的基本组成部件包括：一台标准马达，泵轴，膨胀联轴器，转接器，后板，叶轮，泵壳以及轴封。

适用卫生应用的 BAW 离心泵均有不锈钢机壳护罩，用于对马达的保护，而且每一套完整的 BAW 离心泵单元均配有四只可以调节式的不锈钢支撑脚。

森明生产的 BAW 离心泵特有的增大出水口和先进的叶轮设计可使产品畅流无阻同时满足最低的 NPSH 要求（最低的 NPSH 要求可以减少气蚀现象的产生）。此产品使用 CIP（原位清洗）或手动清洗，同时在设计中采用了可清洁轴封。

Design Standards:

The basic components of SAW centrifugal pump included: a standard motor, spindle, expansion couplings, converters, backboard, impeller, pump case and shaft seal.

BAW centrifugal pumps for sanitary applications have stainless steel case shields for the protection of the Mazda, and each pump unit equipped with a complete set of four stainless steel support can be adjustable feet.

SENMING's centrifugal pumps' special design of amplifying outlet and advanced impeller allows smooth flow and meets the minimum NPSH requirements (minimum requirements can be reduced NPSH cavitation phenomena occur). This product can be cleaned by CIP or by hand. It also has a cleanable seal.

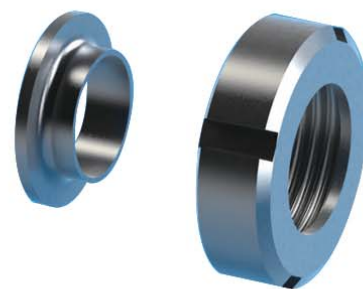


技术数据

功率 p : 2.2kw
流量 Q : 10T/h
扬程 H : 24m
最大入口水压 : 500Kpa(5bar)
温度范围 : -10° C ~ +140° C (EPDM)
噪音水平 (距离 1m 时) : 60 ~ 85dB(A)
双端机械轴封时入口水压 : 最大 500Kpa
(5Bar) ; 水消耗量 : 0.25-0.5L/h

Technical Data:

Power:2.2kw
Flow:10T/h
Lift:24M
Max inlet pressure:500kpa(5bar)
Temperature range:-10°C - +140°C
Noise level(Distance of 1 meter):60-85Db(A)
Double-end mechanical seal inlet pressure:Max 500kpa(5Bar);Water consumption:0.25-0.5L/h



材料

钢质部件 : 304/316L
密封件 : EPDM 橡胶

Material:

steel part: 304/316L
Seal: EPDM

马达

带底座法兰的电机, 根据 IEC 公制标准, 电压频率 50/60Hz 时 2 个电极 = 3000/3600rpm.

频率、电压与功率 (3 相电)

50HZ, 220-240V Δ / 380-420VY
≤ 4KW (推荐)
60 HZ, 250-280V Δ / 440-480VY
≤ 6KW

Motor

With a basic flange mater, according to IEC metric standard, when the Voltage frequency 50/60Hz, two electrodes is 3000/3600rpm

Frequency, Voltage and Power(3-phase Electricity)

50HZ, 220-240V/380-420V
≤4KW(Recommended)
60HZ, 250-280V/440-480VY ≤6KW

卫生级离心泵 Sanitary Centrifugal Pumps



技术参数 Main Parameter

型号 Types	数量 (吨 / 小时) Flow(ton/h)	扬程 (米水柱) Distance (M water column)	电机功率 Electric power	进出口径 Entrance diameter		备注 Remarks
SMH-1.5-14	1.5	14	0.5	40/DN25	32/25	配 ABB 电机 ABB Motor
SMH-3-16	3	16	1.1	40/DN32	38/32	
SMH-5-24	5	24	1.5	50/40	38/38	
SMH-5-32	5	32	2.2	50/40	51/38	
SMH-10-24	10	24	2.2	50/40	51/38	
SMH-10-36	10	36	3	50/40	51/38	
SMH-15-24	15	24	3	50	51	
SMH-20-24	20	24	4	50	51	
SMH-20-36	20	36	5.5	50	51	
SMH-25-24	25	24	4	50/50	51/51	
SMH-30-24	30	24	5.5	65/50	63/51	
SMH-30-36	30	36	7.5	65/50	63/51	
SMH-30-60	30	60	11	65/50	63/51	
SMH-35-36	35	36	11	65/50	63/51	
SMH-40-36	40	36	11	80/65	76/63	
SMH-40-45	40	45	11	80/65	76/63	
SMH-50-36	50	36	11	80/65	101.6/76	
SMH-80-30	80	30	15	100/80	101.6/76	
SMH-80-40	80	40	18.5	100/80		
SMH-100T-40	100	40	22	125/100		
SMH-100T-70	100	70	33	125/100		
SMH-150T-40	150	40	33	150/125		
SMH-200T-40	200	40	45	150/125		
SMH-200T-70	200	70	55	150/125		

Note: The speed regulation can adopt stepless speed variator or frequency converter. The range of speed regulation is 200~900rpm.

卫生级自吸泵 Sanitary Absorb Pump

CIP 自吸泵，其泵体部分材料，均为耐酸不锈钢制成（AISI 316），耐酸碱腐蚀特性，尤为显著，符合食品卫生要求。

优于离心泵的特性，在于能吸取混有空气或泡沫的液体，甚至能在只有空气时，照样自行抽吸，该泵是容积式泵，广泛用于液位低于泵的吸取物料，如在吸奶间，可将奶自奶桶中吸出或可在自动 CIP 清洗系统中，作为清洗缸的回程泵，机械密封为内装内流式，吸取物料温度不高于 100℃。

CIP self-priming pump uses acid resistant stainless steel (AISI 316) as the main material of the pump body, possessing the character of resisting the erosion of acid and alkali and going well with the requirements of food sanitary.

The self-priming pump can inhale the liquids with air or foams, and it can also work well even in the condition of only air. So it is the capacitive pump with the superior characters than centrifugal pumps. It is broadly used in imbibition when liquid surface is lower than the pump. E.g. it can inhale the milk from the barrel; It can also be used in the CIP as the returning pump for cleaning tank, mechanical sealed as internal flow.

The temperature of the absorbing material can not be higher than 100℃



性能 Capability	主要参数 Main technical parameter		
型号 Types	20T/24M	30T/24M	40T/36M
流量Q Q Flow	20T	30T	40T
总扬程H H Total distance	24M	24M	36M
其中吸程 Suction stroke	5-6M	5-6M	5-6M
叶轮轮幅直径 Impeller diameter	192	192	Ø215
进出口管径 Entrance diameter	63.5/63.5	76/63.5	76/76
电动机型号 Electromotor type	M2QA132S4A	M2QA132M4A	M2QA160SM4A
功率 Power	5.5KW(380V.50HZ)	7.5KW(380V.50HZ)	11KW(380V.50HZ)
转速 Rotating	1420r/min	1420r/min	1420r/min
外型尺寸(长×宽×高) Speed Size(L*W*H)	760x320x475	760x320x475	1006x360x600
机器重量 Weight	110kg	116kg	168kg