

**Electrical  
Specification for:**

**CPCI - 6U - DC /24 R**

Rugged Compact PCI 6U 8HP 350 Watt 24V DC Power Supply

**TelkooR Part  
Number:**

**900-6601-0000**

Approvals		
	Name	Date
<b>Written by:</b>	<b>S. Sadot</b>	<b>13/3/08</b>
<b>Engineering:</b>	<b>M. Heller</b>	<b>13/3/08</b>
<b>Sales &amp; Marketing:</b>	<b>B . Steinfeld</b>	<b>13/3/08</b>
<b>Management:</b>	<b>Y. Ben Ami</b>	<b>13/3/08</b>

CUSTOMER: GENERAL	SIZE	CAGE CODE	S5417	DWG. NO.	6601-DOC1-10	REV	A1
	SCALE		RELEASE DATE	13/03/08	SHEET	1	OF 7

REVISION HISTORY					
Rev Level	Rev Date	Change Made	Reason for Change	Effective	Approved By
A	13/3/08	Specification Release		13/3/08	S. Sadot
A1	30/07/2012	Change operation Temp	Customer request	30/07/2012	S. Sadot

CUSTOMER: GENERAL	SIZE	CAGE CODE	S5417	DWG. NO.	6601-DOC1-10	REV	A1
	SCALE	RELEASE DATE	13/03/08	SHEET	2	OF	7

±

**Input:**

Input Voltage: 18-36Vdc  
 Inrush Current: 20A max. @ 48Vdc  
 Efficiency: Full rated load 80% @ 48Vdc  
 Input Protection: Non-User Serviceable Fuse

**Output Voltages & Currents:**

<i>Output</i>	<i>Output Voltage</i>	<i>Adjustment Range</i>	<i>Output Current</i>	<i>Min Load</i>
V1	+5V	4.8 ± 5.4	50A	0
V2	+3.3V	3.1 ± 3.5	60A	0
V3	+12V	0	7.0A	0
V4	-12V	0	1.5	0

Note: Maximum output power at any combination within this table is 350W , At input voltage above 20V, Max output power is 400W

Output Power: 350W with 250LFM forced air cooling  
 Line Regulation: ±0.5%  
 Load Regulation:  
     V1,V2                      ±1%  
     V3                          ±4%  
     V4                          ±4% With minimum load of 1A on the 3.3V output

Ripple & Noise                      20 MHz bandwidth measured across 1uF ceramic and 120uF electrolytic.  
     capacitor paralleled  
     V1                          100mV p-p  
     V2                          60mV p-p  
     V3 & V4                      120mV p-p

Overload & Short Circuit Protection Auto Recovery  
     V1 & V2                      130% max  
     V3 & V4                      150% max

Initial Set Point Tolerance: ±1%  
 Overshoot & Undershoot: 0% at turn ON  
 Turn On Delay: 1 sec. Maximum.  
 Over-voltage Protection: 110 to 130% with latched shut down  
 Temperature Protection: System shutdown due to excessive internal temperature, automatic reset

CUSTOMER: GENERAL	SIZE	CAGE CODE	S5417	DWG. NO.	6601-DOC1-10	REV	A1
	SCALE		RELEASE DATE	13/03/08	SHEET	3	OF 7

**Monitoring Command & Control**

Remote Sense	Available on V1 & V2. Total voltage compensation for cable losses with respect to the main output 400mV
Inhibit (INH#)	Inhibited with GND or TTL "0" – Pulled up to internal +12V Aux supply
Enable (EN#)	Contact closure to external ground to start unit. On shortest pin (last make, first break)
Power Fail (FAL#)	Open collector - Active low signal .Indicates one or more outputs below 90% of specified rate.
Current Share	Accuracy of shared current ±10% with up to 6 parallel units. Single wire current share on V1 & V2 for 50% to 100% load
Hot Swap	Internal O-ring Diode FET's
Over Temperature Warning (DEG#) I2C	Open collector active low about 10°C before power supply shut down. Option

**Operation Status Indicators**

Input Voltage OK	<b>Green LED</b> - Indicates when mains input voltage is present.
Output Failure	<b>Red LED</b> - Indicates one or more outputs below 90% of specified rate.

**Environmental Specification:**

Operating Temperature:	Operation: -40°C to +55°C full load with 300LFM Forced Air Cooling and de-rating linearly above 55°C up to 70 °C by 2.5% per °C
Storage Temperature	-40°C to +85°C
Humidity:	Up to 95% RH -condensing.
Shock:	Peak acceleration 10GPK max.
Vibration:	Random vibration, 10Hz to 500Hz, 3 axis 1.9GRMS max.
Altitude	Operation 6K feet Non operation 40K feet.
MTBF	300,000 hours per Bellcore standard B332 Gb 30°C

CUSTOMER: GENERAL	SIZE	CAGE CODE	S5417	DWG. NO.	6601-DOC1-10	REV	A1
	SCALE		RELEASE DATE	13/03/08	SHEET	4	OF 7

**Safety Regulatory & EMC Specifications:**

Fully compliance to PICMG 2.11 CompactPCI Specification

Safety Agency Compliance	UL 60950 , EN-60950, CE - MARK
ESD susceptibility	EN61000-4-2 level 4 8KV air
Conducted & radiated emission	EN55022/CISPR22 Class B with an external TBD line filter
Surge	EN6100 -4-5 level 3 line-to-line 1KV line to chassis 2KV
Radiated susceptibility	EN61000-4-3 level 3 10V/m
EFT/Burst	EN61000-4-4 level 3 ±2KV
Conducted disturbance	EN61000-4-6 level 2 3Vrms
Power frequency magnetic field	EN61000-4-8 3A/m
RoHS	In full compliance with the RoHS directive # 2002/69/EC

**Dielectric Withstand:**

Input to Case:	1500VDC.
Input to Output:	3000VDC
Output to Case:	100VDC.

**Mechanical Dimensions**

Size	10.14"H X 1.60"W X 6.40"D (261.9mm x 40.34mm x 169.4mm)
Weight	1880 gr.3.2Lbs Max.

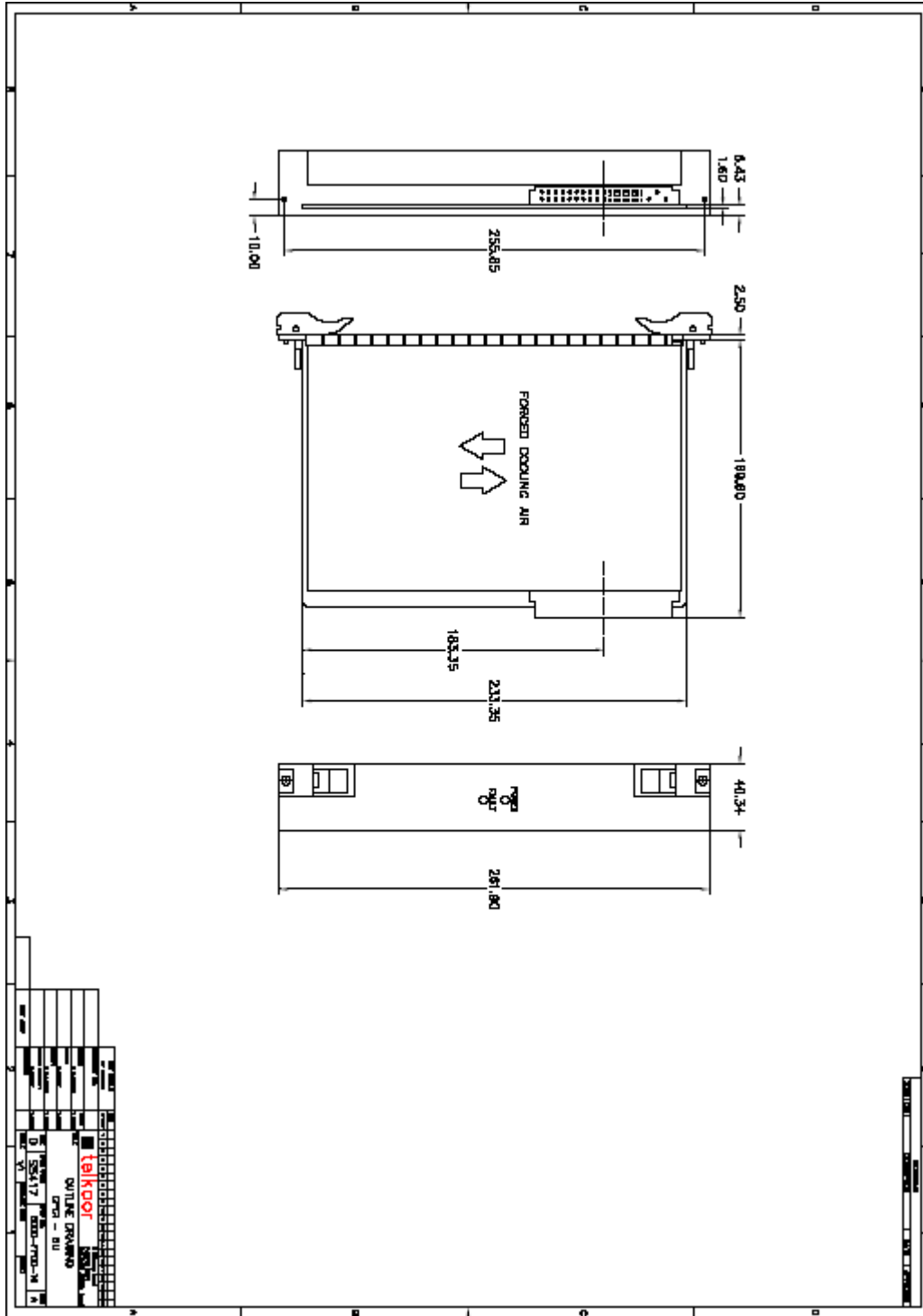
CUSTOMER: GENERAL	SIZE	CAGE CODE	S5417	DWG. NO.	6601-DOC1-10	REV	A1
	SCALE		RELEASE DATE	13/03/08	SHEET	5	OF 7

**OUTPUT CONNECTOR - Positronic-PCIH47M400A1/AA**  
**PIN ASSIGNMENT**

Pin	Pin Type	Signal Name.	Description
1-4	Normal	V1	V1 Output
5-12	Normal	RTN	V1 and V2 Return
13-18	Normal	V2	V2 Output
19	Normal	RTN	V3 Return
20	Normal	V3	V3 Output
21	Normal	V4	V4 Output
22	Normal	RTN	Signal Return
23	Normal	RTN	Signal Return
24	Normal	RTN	V4 Return
25	Normal	GA-0	Geographic ADD-0 (option)
26	Normal	Reverse	Reverse
27	Short	EN#	Enable
28	Normal	GA-1	Geographic ADD-1 (option)
29	Normal	NC	Not Connected
30	Normal	V1 Sense	V1 Remote Sense
31	Normal	GA-2	Geographic ADD-2 (option)
32	Normal	NC	Not Connected
33	Normal	V2 Sense	V2 Remote Sense
34	Normal	S RTN	Sense Return
35	Normal	V1 Share	V1 Current Share
36	Normal	NC	Not Connected
37	Normal	IPMB_SCL	System Manager Bus (option)
38	Normal	DEG#	Degrade Signal
39	Normal	INH#	Open – ON Low - OFF
40	Normal	IPMB_SDA	System Manager Bus (option)
41	Normal	V2 Share	V2 Current Share
42	Normal	FAL#	Fail Signal
43	Normal	IPMB_PWR	Power–System Manager (option)
44	Normal	NC	Not Connected
45	Long	Chassis GND	Chassis GND
46	Long	DC Positive	DC Input
47	Long	DC Negative	DC Input

CUSTOMER: GENERAL	SIZE	CAGE CODE	S5417	DWG. NO.	6601-DOC1-10	REV	A1
	SCALE		RELEASE DATE	13/03/08	SHEET	6	OF 7

**Outline Drawing:**



CUSTOMER: GENERAL	SIZE	CAGE CODE	S5417	DWG. NO.	6601-DOC1-10	REV	A1
	SCALE		RELEASE DATE	13/03/08	SHEET	7	OF 7