

JASPER ELECTRONICS

1580 No. Kellogg Dr.
Anaheim, CA 92807
Ph: (714) 917-0749
Fax: (714) 917-0786

HARMONIC CORRECTION(PFC) AC-DC MEDICAL APPLICATION OPEN FRAME SINGLE OUTPUT 250 WATTS INTERNAL SWITCHING POWER SUPPLIES HIMP250 SERIES



FEATURES:

- ACCOMMODATE UNIVERSAL AC SOURCES
- MEET IEC 61000-3-2 HARMONIC CORRECTION (PFC)
- MEET MEDICAL STANDARD EN 60601-1/UL 2601-1
- EMI MEET EN 55011 & FCC CLASS A

SPECIFICATION

INPUT SPECIFICATION

Input Voltage: Typ. 90-264Vac with PFC.
Input Connector: B-S connector.
Input Frequency: 47-63Hz.
Inrush Current: 11.5Arms @230Vac/50Hz.
Input Current: 2.64A@115Vac, 1.29A @230Vac.
Dielectric Withstand: Meet IEC 60601-1.
EMI: Meet EN 55011 & FCC Class A.
Hold-up Time: Typ. 20.8mS @115Vac, 23.2mS @ 230Vac.
Power Fail Signal: Installed.
Power Factor & Harmonic Correction:
 Meet IEC 61000-3-2, PF typ. 0.98-0.99 @ full load.
Over Temperature Protection: By thermostat.
Earth Leakage: Less than 0.0471mA @230Vac.

OUTPUT SPECIFICATION

Output Voltage: See Ratings Chart.
Output Current: See Ratings Chart.
Output Connector: B-S connector.
Output Wattage: Typ. 250 watts.
Line Regulation: Typ. 1.0%.
Load Regulation: Typ. $\pm 0.5\%$.
Noise & Ripple: Typ. 1.0% peak to peak.
OVP: Built-in.
Adjustability: Available.
Remote on/off: Available.
DC OK Signal: Installed.
Overload Protection (OLP):
 Fully protected against outputs overload and short circuit.
 Consult the factory for OLP setting.

GENERAL SPECIFICATION

Efficiency: Typ. 83-87 %. (Various with output voltage).
Switching Frequency: 130KHz.
Circuit Topology: PWM fixed frequency forward circuit.
Transient Response: Output voltage returns in less than 64mS following a 25% load change.
Safety Standard: Meet Medical standards IEC 60601-1/UL 2601-1/EN 60601-1 Class I.
Power Density: 3.19Watts / Cubic Inch.

Operating Temperature: 0 to +50 °C under 30 CFM forced air cooling.
Storage Temperature: -20 to +85°C.
Temperature Coefficient: Typ. 0.04%/°C.
Cooling: 30 CFM air flow is required to deliver the full power.
Construction: U-bracket construction format.

Note: Due to requests in market and advances in technology, specifications subject to change without notification.



In application.

OUTPUT VOLTAGE/CURRENT RATINGS CHART

2007/09/10

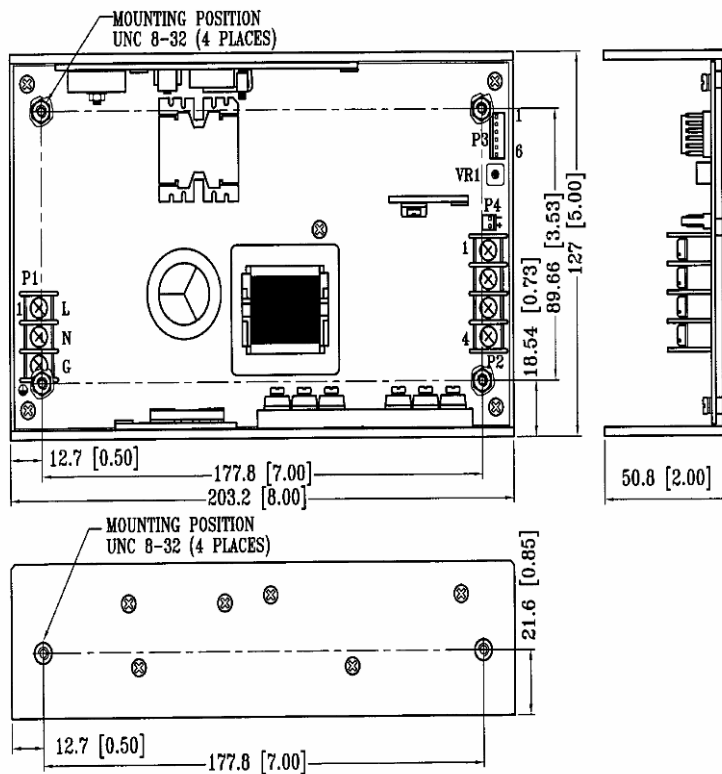
SINGLE OUTPUT

MODEL NO.	MAIN OUTPUT	
	Typ.	Volt.
HIMP250-S120210	21.0A	12.0Vdc
HIMP250-S150170	17.0A	15.0Vdc
HIMP250-S240105	10.5A	24.0Vdc
HIMP250-S480052	5.2A	48.0Vdc

Symbol: “★” OVP built-in.

MECHANICAL DIMENSIONS: MM [INCHES]

WEIGHT: 1.4Kg (49.3 Oz.)



INPUT & OUTPUT CONNECTORS PIN ASSIGNMENT

ASSIGNMENT CNTR/PIN#	AC INPUT			SINGLE OUTPUT		ASSORTED SIGNALS						
	AC-L	AC-N	AC-G	VOI	DC COM	DC OK	FAL	EXT OFF	+S	-S	FAN	COM
	P1-L	P1-N	P1-G	P2-1,P2-2	P2-3,P2-4	P3-1	P3-2	P3-3	P3-4	P3-5	P4-1	P4-2