

**Electrical
Specification for:**

eFO306-433

300W AC Input Four Outputs

**Telkoor Part
Number:**

900-3106-0000

CUSTOMER	SIZE	CAGE CODE	S5417	DWG. NO.	3106-DOC1-10	REV	A1
	SCALE		RELEASE DATE	13/03/08	SHEET	1	OF 6

REVISION HISTORY					
Rev Level	Rev Date	Change Made	Reason for Change	Effective	Approved By
A	13/3/08	Specification Release		13/3/08	S. Sadot
A1	24/6/08	Correct V3 to +12v and V4 to -12v. (was 15v)	Error correction	24/6/08	S. Sadot

Approvals		
	Name	Date
Written by:	S. Sadot	13/3/08
Engineering:	M.Heller	13/3/08
Sales & Marketing:	B. Steinfeld	13/3/08
Management:	Y. Ben Ami	13/3/08

CUSTOMER	SIZE	CAGE CODE	S5417	DWG. NO.	3106-DOC1-10	REV	A1
	SCALE	RELEASE DATE	13/03/08	SHEET	2	OF	6

Input:

Input Voltage: 85 - 264Vac, auto range, single phase
 Frequency: 47-63Hz
 Inrush Current: 50 A maximum at 230Vac, 25A maximum at 115Vac.
 Power Factor: 0.98 typical at 230Vac, full load
 0.99 typical at 115Vac, full load
 Efficiency >83% at 230Vac, full load rated power
 >80% at 120Vac, full load rated power
 Input Protection: Internal Line Fuse: IEC type, 6.3A 250Vac quick acting
 Brown – Out: 75 to 300Vac for 50Msec

Output Voltages & Currents:

Output	Output Voltage	Adjustment Range	Output Current	Max. Load
V1	+5V	4.8 ± 5.4	40A	45A
V2	+3.3V	3.1 ± 3.5	40A	45A
V3	+12V	0	4A	6A
V4	-12V	0	1.5A	2A
Auxiliary	5V	0	5mA	10mA

Note: 1) Maximum output power at any combination within this table is 300W

Output Power: 300W with 250LFM forced air cooling
 Line Regulation: ±0.5%
 Load Regulation:
 V1, V2 ±1%
 V3, V4 ±4%
 Ripple & Noise 20 MHz bandwidth measured across 1uF ceramic and 120uF electrolytic.
 Capacitor in paralleled
 V1, V2 60mV p-p
 V3 & V4 120mV p-p
 Overload & Short Circuit Protection Fully protected against output overload and short circuit. Automatic recovery upon removal of overload condition
 V1 & V2 135% max.
 V3 180% max.
 V4 250% max.
 ±1%
 Overshoot & Undershoot: 0% at turn ON
 Hold Up Time 16mSec at full load and 220VAC input
 Turn On Delay: 2 sec. Maximum.
 Rise Time 30mSec from 10% to 90% of its final value.
 Over-voltage Protection: 110 to 130% with latched shut down (V1, V2, V3)
 Temperature Protection: System shutdown due to excessive internal temperature, automatic reset

CUSTOMER	SIZE	CAGE CODE	S5417	DWG. NO.	3106-DOC1-10	REV	A1
	SCALE		RELEASE DATE	13/03/08	SHEET	3	OF 6

Monitoring Command & Control

Remote Sense	Available on V1 & V2. Maximum voltage compensation for cable losses 300mV
Inhibit (INH#)	TTL –compatible signal inhibited with GND or TTL “0”
Power Fail (FAL#)	TTL compatible signal, open collector active low signal. Indicates V1, V2, V3 outputs below 90% of specified rate.
Current Share	Accuracy of current share ±10% between units with up to 6 parallel units. Single wire current share on V1 & V2 for 50% to 100% load.
Hot Swap	Internal O-ring Diode

Environmental Specification:

Operating Temperature	Operation: -5°C to +55°C full load with 250LFM Forced Air Cooling and de-rating linearly above 55°C by 2.5% per °C
Cooling:	150W free convection cooling (base plate cooling). 300W continuous forced air cooling (250lfm, or 15CFM min.)
Storage Temperature	-40°C to +85°C
Humidity	Up to 95% RH non-condensing.
Shock:	Peak acceleration 20GPK max.
Vibration	Random vibration, 10Hz to 500Hz, 3 axis 1.9GRMS max.
Altitude	Operation 6K ft Non operation 40K ft.
MTBF	300,000 hours per Bellcore standard B332 Gb 30°C

CUSTOMER	SIZE	CAGE CODE	S5417	DWG. NO.	3106-DOC1-10	REV	A1
	SCALE		RELEASE DATE	13/03/08	SHEET	4	OF 6

Safety Regulatory & EMC Specifications:

Safety Agency Compliance	UL 60950, EN-60950, CE - MARK
Harmonics	EN61000-3-2
Voltage Fluctuation	EN61000-4-3
ESD susceptibility	EN61000-4-2 level 4 8KV air
Conducted & radiated emission	EN55022/CISPR22 Class B with an external TBD line filter
Surge	EN6100 -4-5 level 3 line-to-line 1KV line to chassis 2KV
Radiated susceptibility	EN61000-4-3 level 3 10V/m
EFT/Burst	EN61000-4-4 level 3 ±2KV
Conducted disturbance	EN61000-4-6 level 2 3Vrms
Power frequency magnetic field	EN61000-4-8 3A/m

Dielectric Withstand

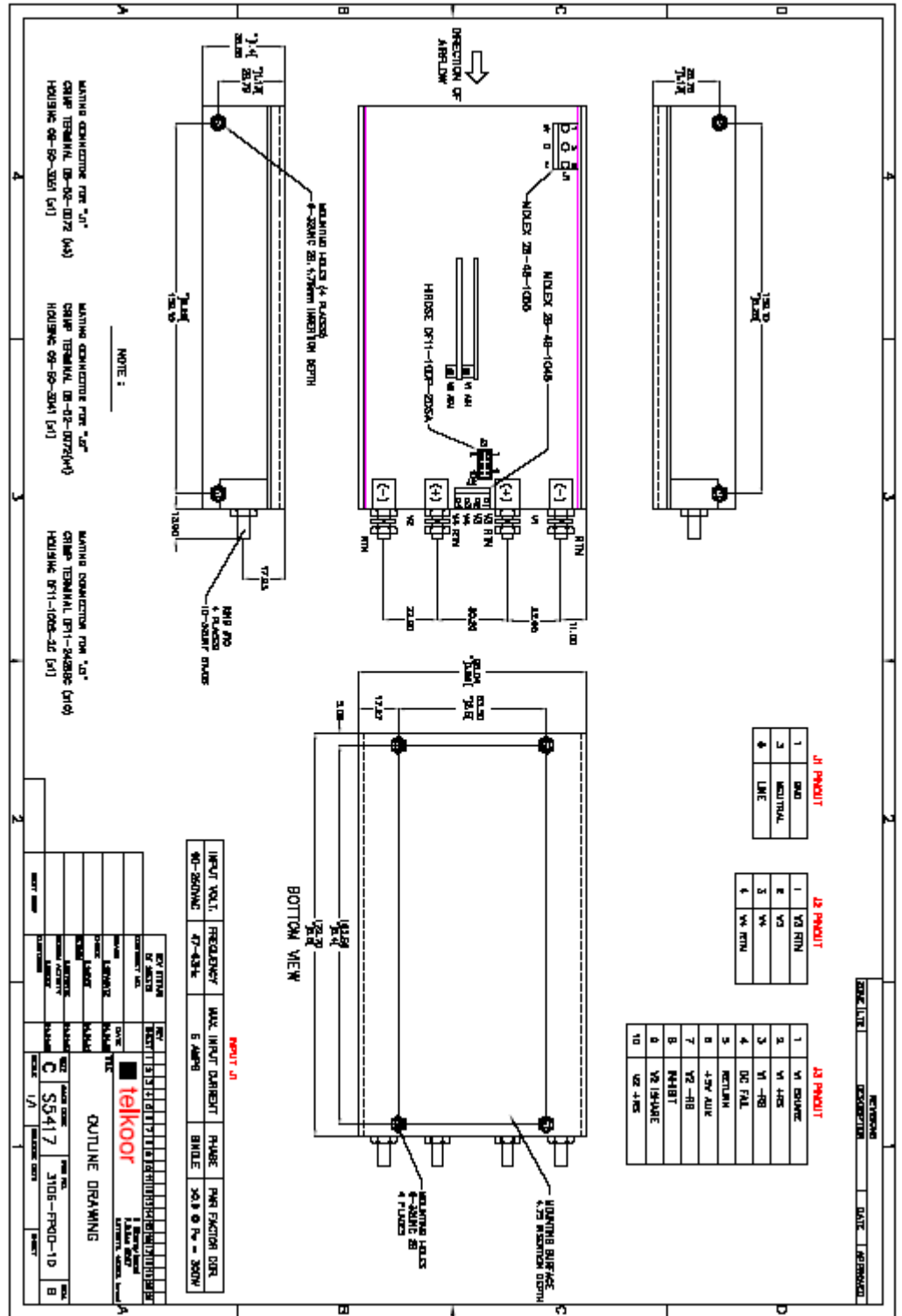
Input to Case:	1500VAC.
Input to Output:	3000VAC
Output to Case:	100VDC.

Output Connectors

V1, V2	10-32 UNF Studs
V3, V4	Molex 4 Pins p/n 26-48-1045
5V Aux. And signals	Hirose DF11-10DP-2DSA

CUSTOMER	SIZE	CAGE CODE	S5417	DWG. NO.	3106-DOC1-10	REV	A1
	SCALE		RELEASE DATE	13/03/08	SHEET	5	OF 6

OUTLINE DRAWING



CUSTOMER	SIZE	CAGE CODE	S5417	DWG. NO.	3106-DOC1-10	REV	A1
	SCALE	RELEASE DATE	13/03/08	SHEET	6	OF	6