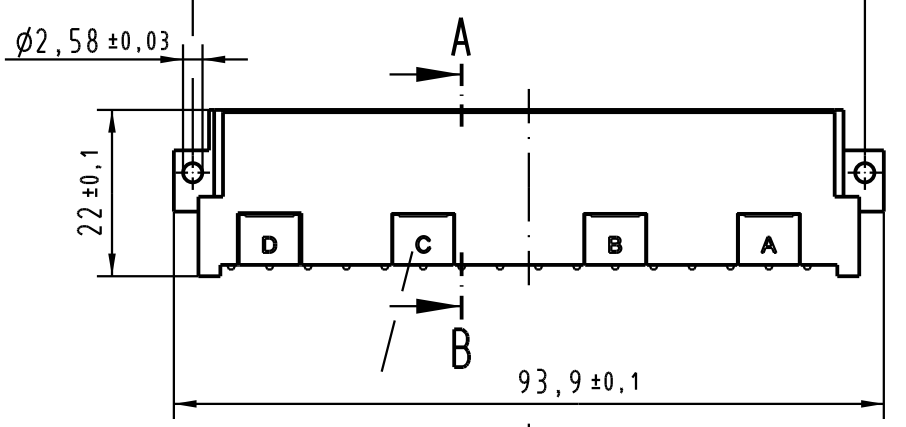
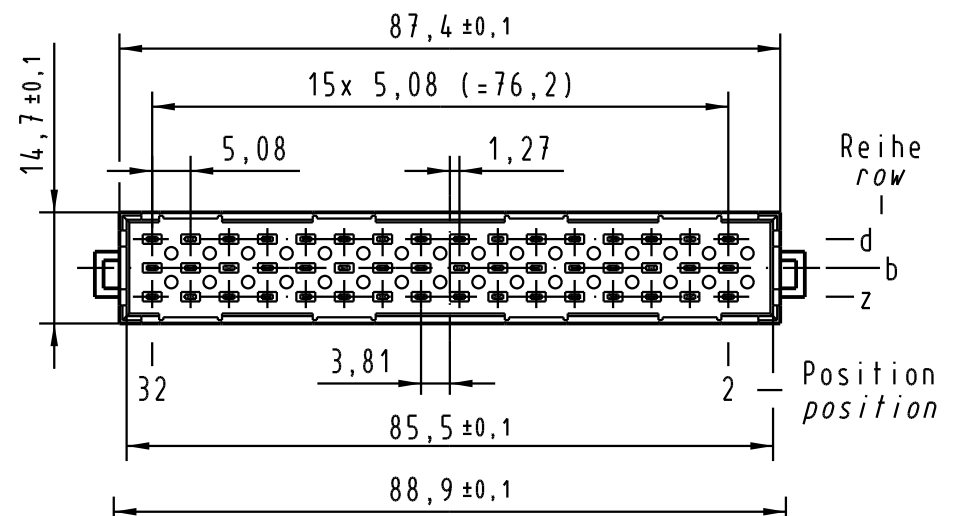
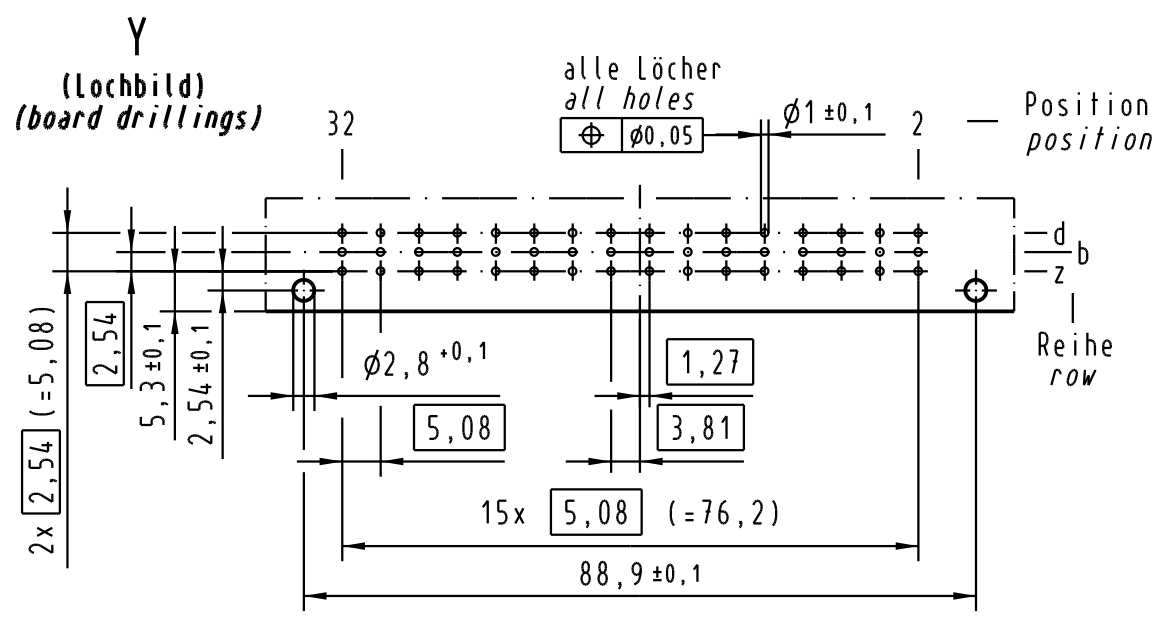
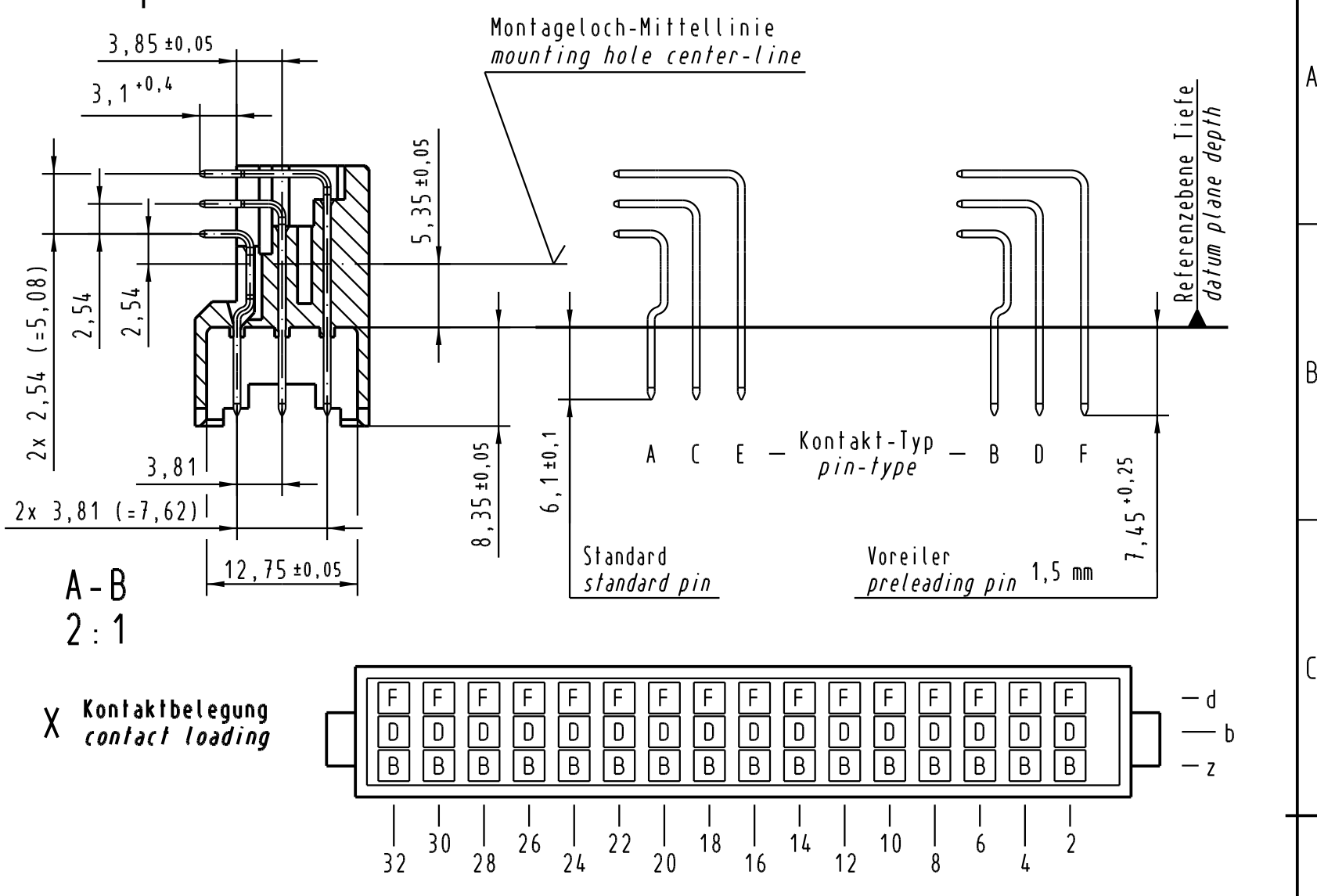


Alle Rechte vorbehalten. All rights reserved

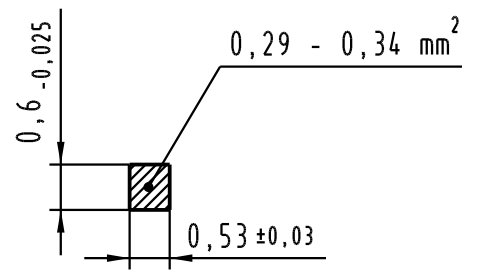


Sollbruchstelle für Kodierung / breaking point for coding



**Z 10:1**

Querschnitt der Lötanschlüsse: cross-section of solder terminations:



09 06 148 2935	1	Au über/over Ni
Bestell-Nr. part-no.	Anforderungsstufe nach IEC performance level acc. to IEC	Kontaktoberfläche contact plating

All Dimensions in mm Original Size DIN A 3			Techn. Character. IEC 60603-2			Nicht tolerierte Maß Free size tolerances IEC 60603-2		
		Dat.		Name		Maßstab/Scale		
		22.03.02		Rie.		1:1		
		22.03.02		kfoe		(2:1; 10:1)		
		Stand.						
33143	14.10.05	Hage.		HARTING Electronics GmbH & Co. KG		<b>TB 09 06 148 x935</b> Blatt/page		
30903				D-32339 ESPELKAMP				
Mod.	Dat.	Name				Sub.		