

NOTES:

1. Ⓢ REPRESENTS A CRITICAL DIMENSION.
2. PARTS TO BE PACKAGED IN TUBE.

DESIGNED & DIMENSIONED IN MILLIMETERS [INCHES]

PCIE-XXX-02-X-D-RA

No OF POSITIONS
-036, -064, -098, -164
(DOUBLE ROW)

LEAD STYLE
-02: 1.57 [0.62"] THICK CARD

PLATING SPECIFICATION
(VALUES GIVEN ARE IN MICRO INCHES)
-S: 30u" MIN Au/50u" Ni IN CONTACT,
MATING TIN ON TAIL
-F: 3u" MIN Au/50u" Ni IN CONTACT,
MATING TIN ON TAIL

OPTION
-RA: RIGHT ANGLE

ROW SPECIFICATION
-D: DOUBLE ROW

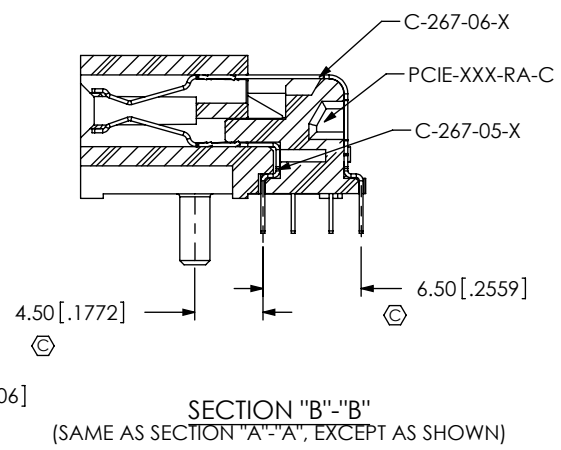
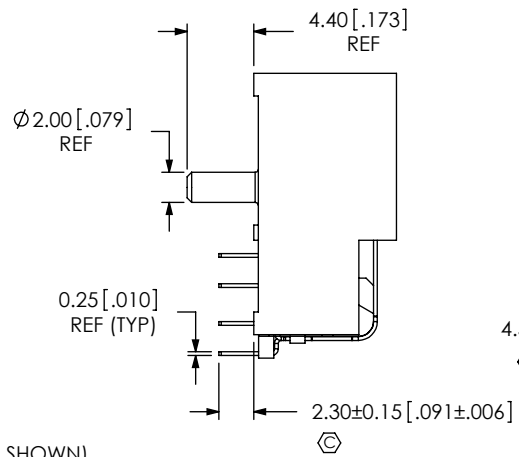
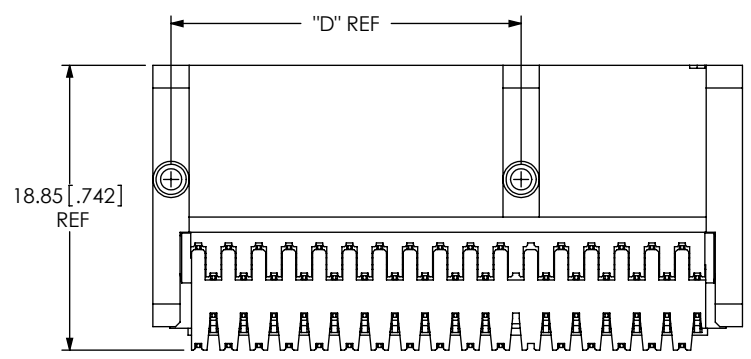
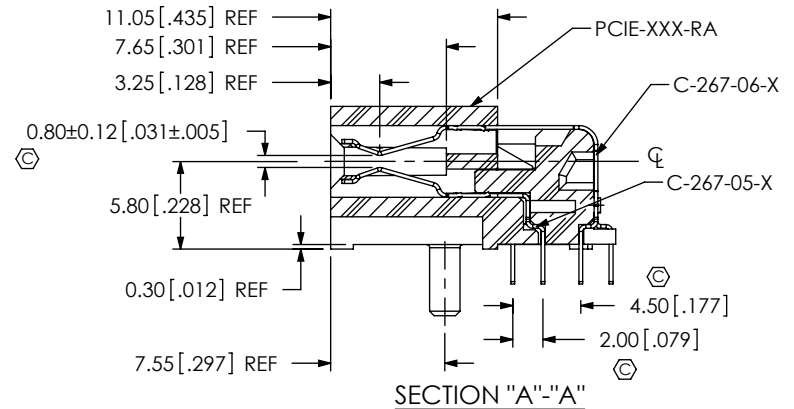
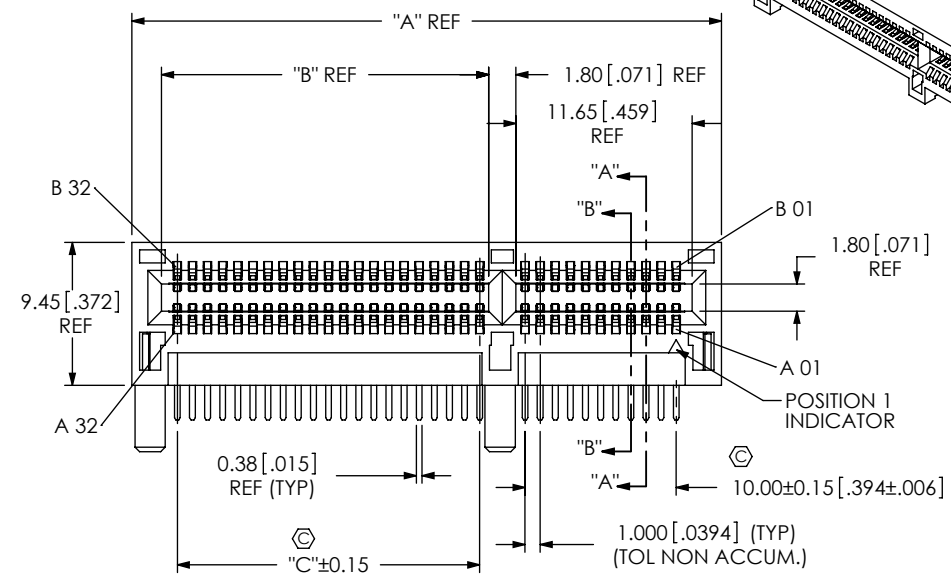
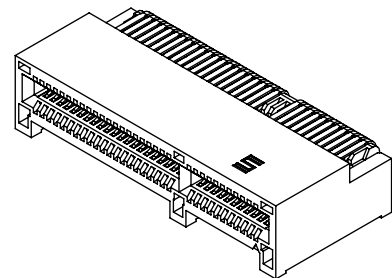


FIG. 1
(PCIE-064-02-X-D-RA SHOWN)

No. OF POS	"A"	"B"	"C"	"D"
-036	25.00 [0.984]	7.65 [0.301]	6.00 [0.236]	9.150 [0.3602]
-064	39.00 [1.535]	21.65 [0.852]	20.00 [0.787]	23.150 [0.9114]
-098	56.00 [2.205]	38.65 [1.522]	37.00 [1.457]	40.150 [1.5807]
-164	89.00 [3.504]	71.65 [2.821]	70.00 [2.756]	73.150 [2.8799]

UNLESS OTHERWISE SPECIFIED, DIMENSIONS ARE IN MILLIMETERS [INCHES]. TOLERANCES ARE: DECIMALS ANGLES X.X: ±0.3 [0.1] X.XX: ±0.13 [0.005] X.XXX: ±0.051 [0.002] 2°

PROPRIETARY NOTE
THIS DOCUMENT CONTAINS INFORMATION CONFIDENTIAL AND PROPRIETARY TO SAMTEC, INC. AND SHALL NOT BE REPRODUCED OR TRANSFERRED TO OTHER DOCUMENTS OR DISCLOSED TO OTHERS OR USED FOR ANY PURPOSE OTHER THAN THAT WHICH IT WAS OBTAINED WITHOUT THE EXPRESSED WRITTEN CONSENT OF SAMTEC, INC.



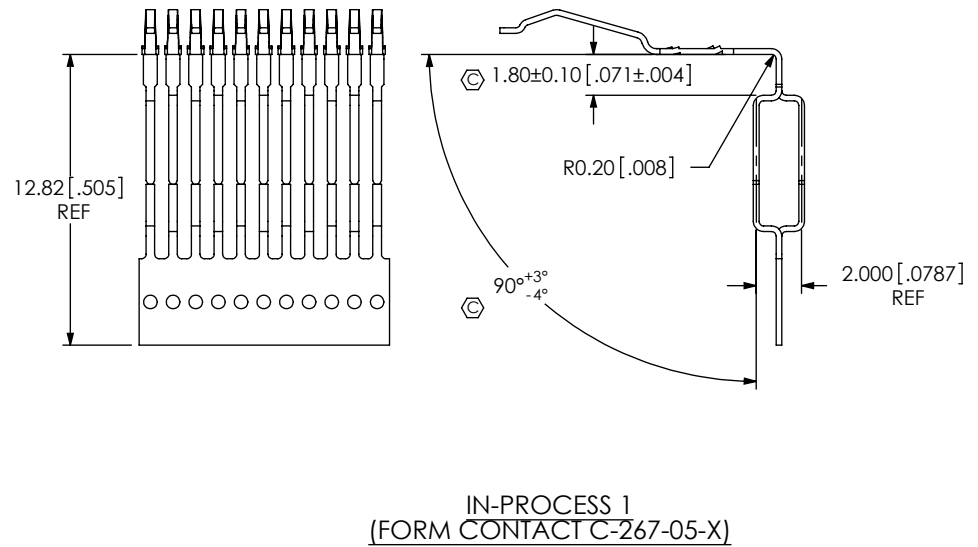
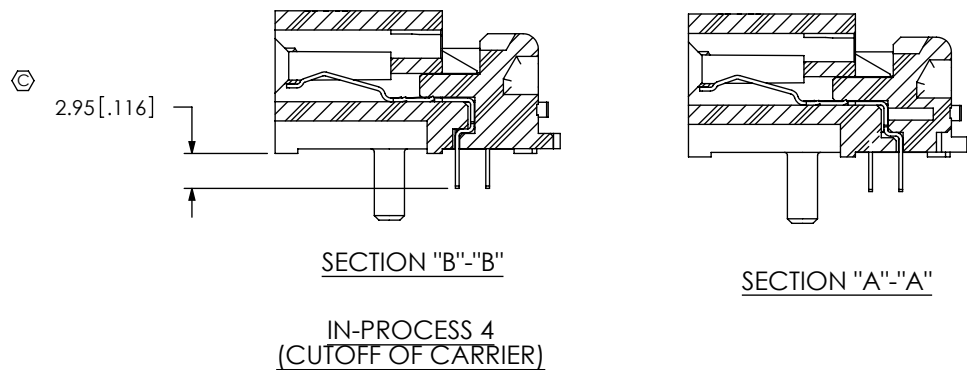
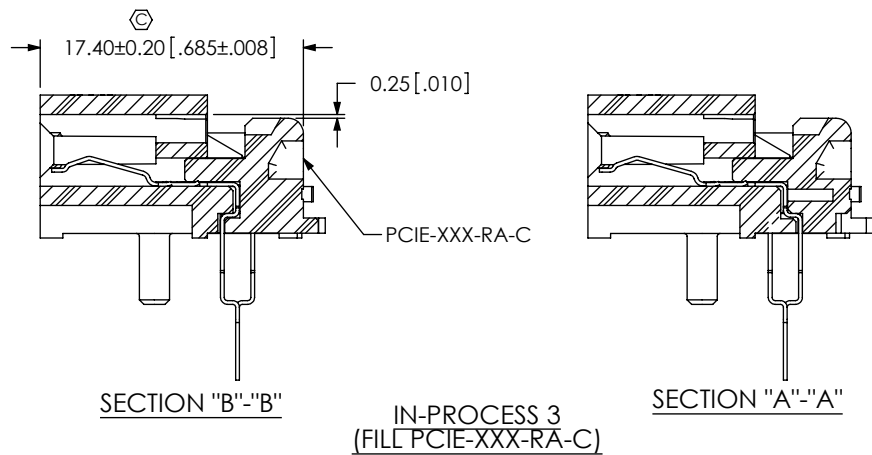
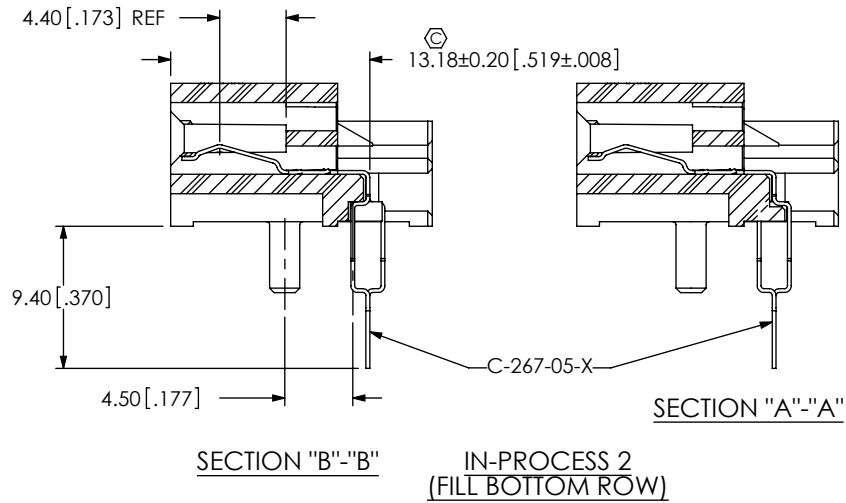
520 PARK EAST BLVD, NEW ALBANY, IN 47150
PHONE: 812-944-6733 FAX: 812-948-5047
e-Mail: info@SAMTEC.com code 55322

MATERIAL: DO NOT SCALE DRAWING SHEET SCALE: 2:1
INSULATOR: LCP, COLOR: BLACK
CONTACT: PHOS BRONZE

DESCRIPTION: PCI EXPRESS RIGHT ANGLE ASSEMBLY

DWG. NO. PCIE-XXX-02-X-D-RA

BY: ROY LUO 10/21/2009 SHEET 1 OF 3



F:\DWG\MISC\MKTG\PCIE-XXX-02-X-D-RA-MKT.SLDDRW

PROPRIETARY NOTE
THIS DOCUMENT CONTAINS INFORMATION CONFIDENTIAL AND PROPRIETARY TO SAMTEC, INC. AND SHALL NOT BE REPRODUCED OR TRANSFERRED TO OTHER DOCUMENTS OR DISCLOSED TO OTHERS OR USED FOR ANY PURPOSE OTHER THAN THAT WHICH IT WAS OBTAINED WITHOUT THE EXPRESSED WRITTEN CONSENT OF SAMTEC, INC.

DO NOT SCALE DRAWING

SHEET SCALE: 2:1

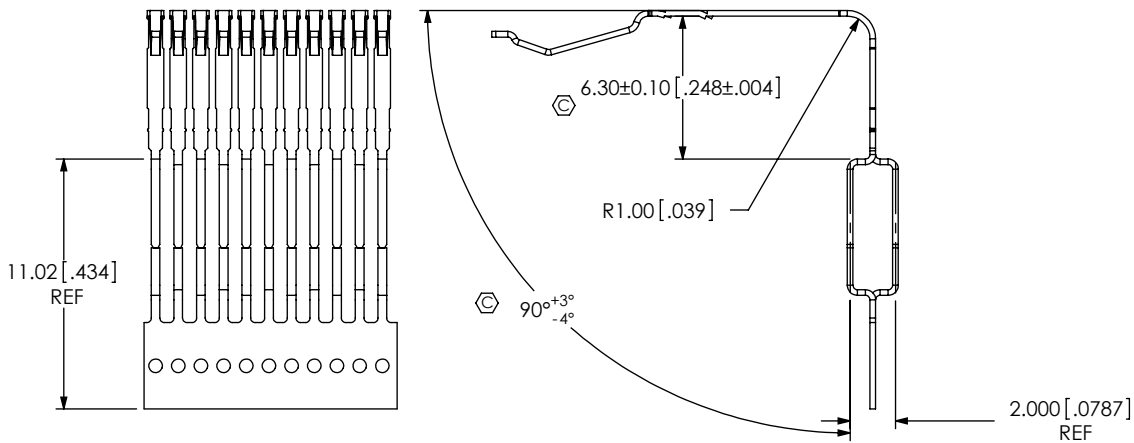
samtec

520 PARK EAST BLVD, NEW ALBANY, IN 47150
PHONE: 812-944-6733 FAX: 812-948-5047
e-Mail info@SAMTEC.com code 55322

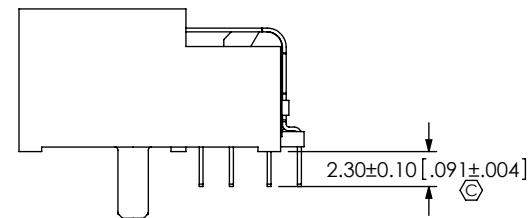
DESCRIPTION:
PCI EXPRESS RIGHT ANGLE ASSEMBLY

DWG. NO.
PCIE-XXX-02-X-D-RA

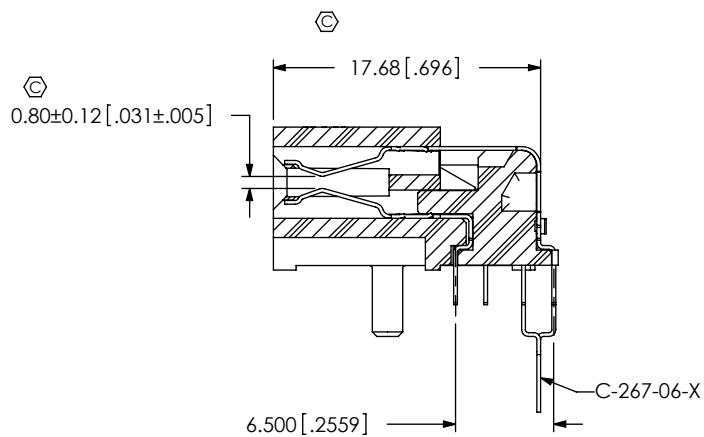
BY: ROY LUO 10/21/2009 SHEET 2 OF 3



IN-PROCESS 5
(FORM CONTACT C-267-06-X)

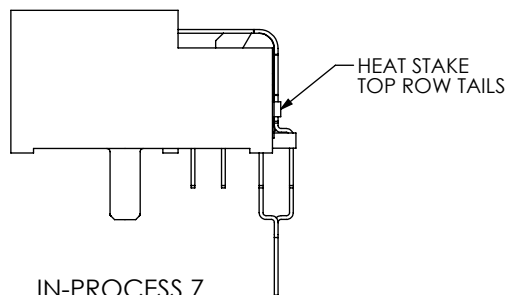


IN-PROCESS 9
(SHEAR TAIL)

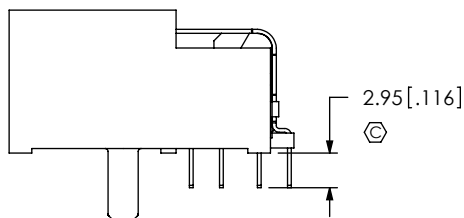


SECTION "B"-"B"

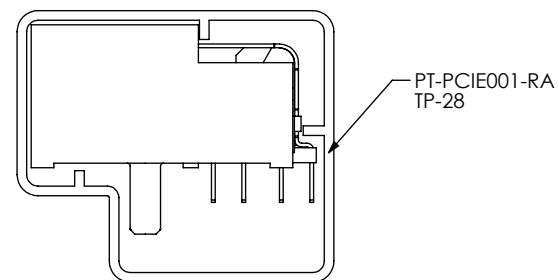
IN-PROCESS 6
(FILL TOP ROW)



IN-PROCESS 7
(HEAT STAKE TOP ROW CONTACTS)



IN-PROCESS 8
(CUT OFF TOP CONTACT CARRIER)



PACKAGING VIEW

F:\DWG\MISC\MKTG\PCIE-XXX-02-X-D-RA-MKT.SLDDRW

PROPRIETARY NOTE

THIS DOCUMENT CONTAINS INFORMATION CONFIDENTIAL AND PROPRIETARY TO SAMTEC, INC. AND SHALL NOT BE REPRODUCED OR TRANSFERRED TO OTHER DOCUMENTS OR DISCLOSED TO OTHERS OR USED FOR ANY PURPOSE OTHER THAN THAT WHICH IT WAS OBTAINED WITHOUT THE EXPRESSED WRITTEN CONSENT OF SAMTEC, INC.

DO NOT SCALE DRAWING

SHEET SCALE: 2:1



520 PARK EAST BLVD, NEW ALBANY, IN 47150
PHONE: 812-944-6733 FAX: 812-948-5047
e-Mail info@SAMTEC.com code 55322

DESCRIPTION:
PCI EXPRESS RIGHT ANGLE ASSEMBLY

DWG. NO.
PCIE-XXX-02-X-D-RA

BY: ROY LUO 10/21/2009 SHEET 3 OF 3