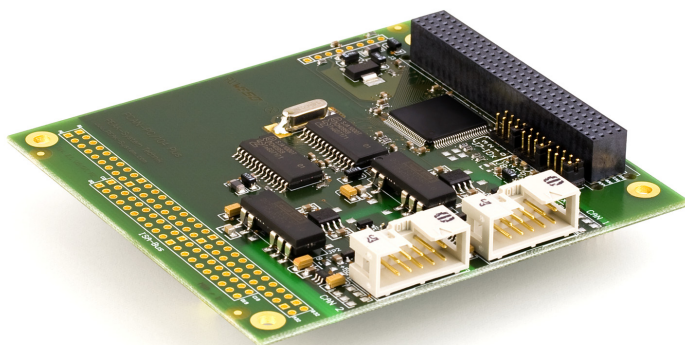


PCAN-PC/104-Plus

PC/104-Plus to CAN Interface

User Manual v2.1.1



Products taken into account

Product Name	Model	Part Number
PCAN-PC/104-Plus Single Channel	One CAN channel	IPEH-002094
PCAN-PC/104-Plus Dual Channel	Two CAN channels	IPEH-002095
PCAN-PC/104-Plus Single Channel opto-decoupled	One CAN channel, galvanic isolation for CAN connection	IPEH-002096
PCAN-PC/104-Plus Dual Channel opto-decoupled	Two CAN channels, galvanic isolation for CAN connections	IPEH-002097

The cover picture shows the product PCAN-PC/104-Plus Dual Channel opto-decoupled. Other product versions have an identical form factor but vary in equipment.

On request you can get the product versions with stack-through connectors for the ISA bus.

CANopen® and CiA® are registered community trade marks of CAN in Automation e.v.

All other product names mentioned in this manual may be the trademarks or registered trademarks of their respective companies. They are not explicitly marked by "™" and "®".

© 2012 PEAK-System Technik GmbH

PEAK-System Technik GmbH
Otto-Roehm-Strasse 69
64293 Darmstadt
Germany

Phone: +49 (0)6151 8173-20
Fax: +49 (0)6151 8173-29

www.peak-system.com
info@peak-system.com

Document version 2.1.1 (2012-04-04)

Contents

1	Introduction	5
1.1	Properties at a Glance	5
1.2	System Requirements	6
1.3	Scope of Supply	6
2	Installing and Configuring the Software and the Card	8
2.1	Configuring the Card	8
2.1.1	Setting the Position in the PC/104 Stack	8
2.2	Installing the Software and the Card	10
2.3	Notes for the ISA Bus Stack-through Connection	12
3	Connecting the CAN Bus	13
3.1	D-Sub connector	13
3.2	Supplying External Devices via the CAN Connector	15
3.3	Cabling	17
3.3.1	Termination	17
3.3.2	Example of a Connection	17
3.3.3	Maximum Bus Length	18
4	Using the Software	19
4.1	CAN Monitor PCAN-View for Windows	19
4.1.1	Receive/Transmit Tab	21
4.1.2	Trace Tab	23
4.1.3	Status Bar	24
4.2	Linking Own Programs with PCAN-Basic	25
4.2.1	Features of PCAN-Basic	26
4.2.2	Principle Description of the API	27
4.2.3	Notes about the License	28

5 Technical Specifications	29
Appendix A CE Certificate	31
Appendix B Dimension Drawing	32
Appendix C Quick Reference	33

1 Introduction

The PCAN-PC/104-Plus card provides one or two CAN channels for a PC/104-Plus computer system using the PCI bus. Device drivers and programming interfaces exist for different operating systems, so programs can easily access a connected CAN bus.



Tip: At the end of this manual (Appendix C) you can find a [Quick Reference](#) with brief information about the installation and operation of the PCAN-PC/104-Plus card.

1.1 Properties at a Glance

- └ Form factor PC/104
- └ Use of the 120-pin connection for the PCI bus
- └ Up to four cards can be used in one system
- └ Compliant with CAN specifications 2.0A (11-bit ID) and 2.0B (29-bit ID)
- └ Bit rates up to 1 Mbit/s
- └ Connection to CAN bus through D-Sub slot bracket, 9-pin (in accordance with CiA® 102)
- └ NXP SJA1000 CAN controller, 16 MHz clock frequency
- └ NXP PCA82C251 CAN transceiver
- └ 5-Volts supply to the CAN connection can be connected through a solder jumper, e.g. for external bus converters
- └ 1 or 2 High-speed CAN channels (ISO 11898-2)
- └ Galvanic isolation on the CAN connection up to 500 V (only opto-decoupled versions), separate for each CAN channel

- └ PC/104-ISA stack-through connector
- └ Extended operating temperature range from -40 to 85 °C (-40 to 185 °F)



Note: This manual describes the use of the PCAN-PC/104-Plus card with **Windows**. You can find device drivers for **Linux** and the corresponding application information on the provided CD in the directory branch `Develop` and on our website under www.peak-system.com/linux.

1.2 System Requirements

- └ PC/104 stack with PCI-Bus (according to the specification PC/104-Plus)
- └ Operating system Windows 7/Vista/XP (32/64-bit) or Windows CE 6.x (x86 and ARMv4 processor support) or Linux (32/64-bit)

1.3 scope of supply

- └ PCAN-PC/104-Plus card
- └ Slot bracket with D-Sub connectors for the CAN bus
- └ Device drivers for Windows 7/Vista/XP (32/64-bit) and Linux (32/64-bit)
- └ Device driver for Windows CE 6.x (x86 and ARMv4 processor support)
- └ PCAN-View CAN monitor for Windows

- └ PCAN-Basic programming interface consisting of an interface DLL, examples, and header files for all common programming languages
- └ Manual in PDF format

2 Installing and Configuring the Software and the Card

This chapter covers the configuration and the software setup for the PCAN-PC/104-Plus card under Windows and the installation of the card in the PC/104 stack.



Note: Under Windows the PCAN-PC/104-Plus card is run as a PCI card.

2.1 Configuring the Card

Before installing the PCAN-PC/104-Plus card into a PC/104 stack, you may have to configure it using jumpers on the PCB.



Attention! Electrostatic discharge (ESD) can damage or destroy components on the PCAN-PC/104-Plus card. Take precautions to avoid ESD when handling the card.

2.1.1 Setting the Position in the PC/104 Stack

For communication with the host the PCAN-PC/104-Plus card uses the PCI interface where specific relations between the lengths of the signal lines must be met. Different line lengths result from different positions of a PC/104-Plus card in a PC/104 stack. Therefore the PCAN-PC/104-Plus card must be adjusted to a specific position in the stack by setting the appropriate jumpers. The spatial distance to the host results in the index for the assignment of the jumpers.

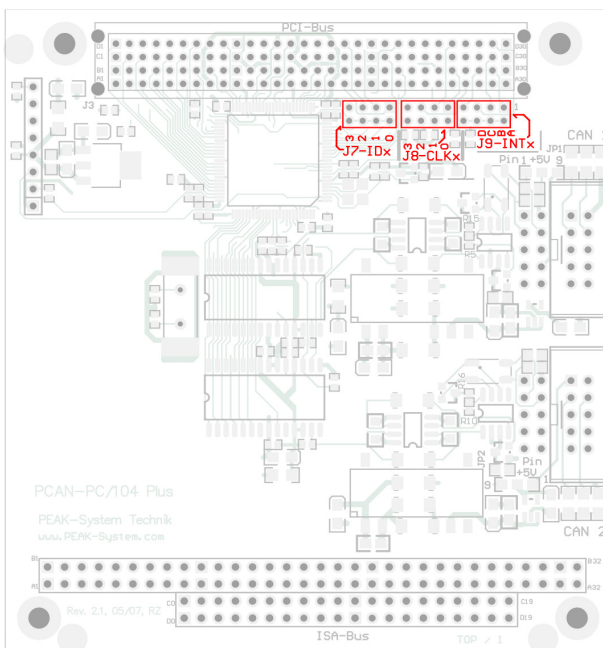


Figure 1: Position of the jumpers J7, J8, J9
on the PCAN-PC/104-Plus card

Jumper	Signal	Position in the PC/104 stack			
		1	2	3	4
J7	ID Select	0	1	2	3
J8	Clock Select	0	1	2	3
J9	Interrupt Select	A	B	C	D

2.2 Installing the Software and the Card

Setup the driver before installing the PCAN-PC/104-Plus card in the PC/104 stack.

▶ Do the following to setup the driver:

1. Windows XP only: Make sure that you are logged in as user with administrator privileges (not needed for normal use of the PCAN-PC/104-Plus card later on).
2. Insert the supplied CD into the appropriate drive of the computer. Usually a navigation program appears a few moments later. If not, start the file `Intro.exe` from the root directory of the CD.
3. On the page **English > Drivers** activate the entry **PCAN-PCI**.
4. Click on **Install now**. The setup program for the driver is executed.
5. Follow the instructions of the program.



Tip: If you don't want to install the CAN monitor PCAN-View for Windows onto the hard disk together with the driver, you have the option to start the program later directly from CD without prior installation.

▶ Do the following to install the PCAN-PC/104-Plus card into the PC/104 stack:



Attention! Electrostatic discharge (ESD) can damage or destroy components on the PCAN-PC/104-Plus card. Take precautions to avoid ESD when handling the card.

1. Plug a cable from the slot bracket to a 10-pin socket for each CAN connection.

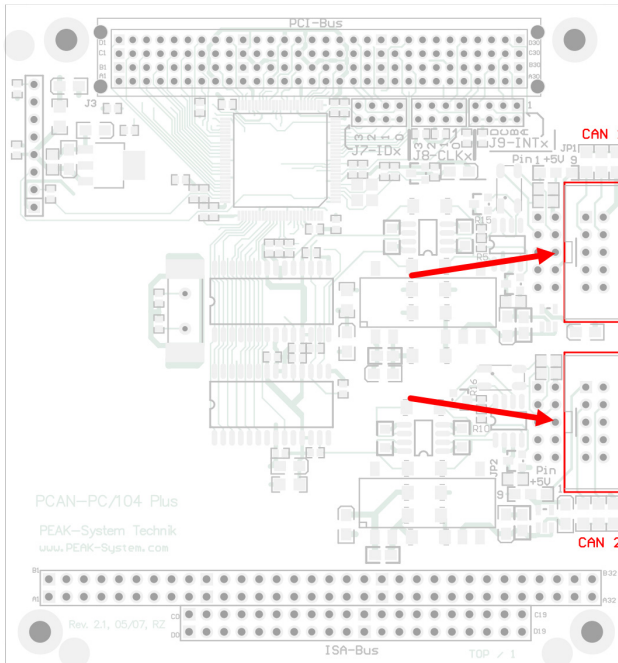


Figure 2: Position of the sockets for the CAN connection,
J4 for CAN channel 1 (upper position),
J5 for CAN channel 2 (lower position, Dual Channel versions only)

2. Shut down the computer.
3. Disconnect the computer from the power supply.
4. Insert the card into the PC/104 stack at the position configured before (1 to 4).
5. Reconnect the power supply of the computer.

▶ Do the following to complete the initialization:

1. Turn on the computer and start Windows. Make sure that you are logged in as user with administrator privileges.

Windows notifies that new hardware has been detected.

2. Windows XP only: A Wizard dialog box appears. Follow its instruction. Deny the search for driver software at Windows Update and select the automatic software installation during the procedure

All Windows operating systems: the drivers are found and installed by Windows.

3. Afterwards you can work as user with restricted rights again.

After the driver has been successfully set up you can find the entry "PCAN-PC/104" in the branch "CAN-Hardware" of the Windows Device Manager.

2.3 Notes for the ISA Bus Stack-through Connection

If you want to use additional modules in the PC/104 stack being connected via the ISA bus, the connections J1 and J2 must be equipped with stack-through connectors. On request you get a respective version of the PCAN-PC/104-Plus card.

Taking the host as point of view, PC/104 modules with ISA bus must be plugged onto the stack behind any module with PCI bus. The signals of the ISA bus are connected through and not used by the PCAN-PC/104-Plus card.

3 Connecting the CAN Bus

3.1 D-Sub connector

A High-speed CAN bus (ISO 11898-2) is connected to the 9-pin D-Sub connector. The pin assignment for CAN corresponds to the specification CiA® 102.

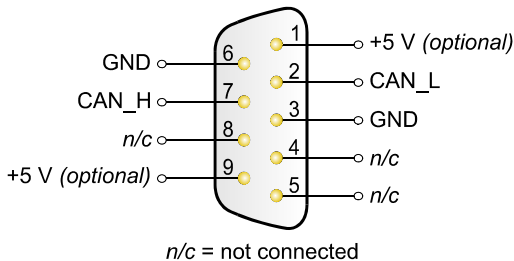


Figure 3: Pin assignment High-speed CAN bus
(view onto a D-Sub connector of the slot bracket)

With the pins 1 and 9 devices with low power consumption (e.g. external bus converters) can be directly supplied via the CAN connector. At delivery these pins are not assigned. You can find a detailed description in section 3.2 on page 15.

The pin assignment between a 10-pin socket on the PCAN-PC/104-Plus card and a D-Sub male connector is as follows:

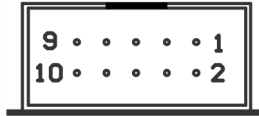


Figure 4: Numbering at the 10-pin socket

Pin	Assignment	Assignment D-Sub
1	+5 V (optional)	1
2	GND	6
3	CAN_L	2
4	CAN_H	7
5	GND	3
6	not connected	8
7	not connected	4
8	+5 V (optional)	9
9	not connected	5
10	not connected	



Tip: You can connect a CAN bus with a different transmission standard via a bus converter. PEAK-System offers different bus converter modules (e.g. PCAN-TJA1054 for a Low-speed CAN bus according to ISO 11898-3).

3.2 Supplying External Devices via the CAN Connector

A 5-Volt supply can optionally be routed to pin 1 and/or pin 9 of a D-Sub connector by setting solder bridges on the PCAN-PC/104-Plus card (independently for each connector on the Dual Channel versions). Thus external devices with low power consumption (e.g. bus converters) can be directly supplied via the CAN connector.

When using this option the 5-Volt supply is connected to the power supply of the PC/104 stack and is not fused separately. The opto-decoupled versions of the card contain an interconnected DC/DC converter. Therefore the current output is limited to 50 mA.

➡ Proceed as follows to activate the 5-Volt supply:



Attention! Electrostatic discharge (ESD) can damage or destroy components on the PCAN-PC/104-Plus card. Take precautions to avoid ESD when handling the card.

Set the solder bridges on the PCAN-PC/104-Plus card according to the desired settings. During this procedure take especially care not to produce unwanted short circuits on the card.

Figure 5 shows the positions of the solder fields on the PCAN-PC/104-Plus card. The table below contains the possible settings.

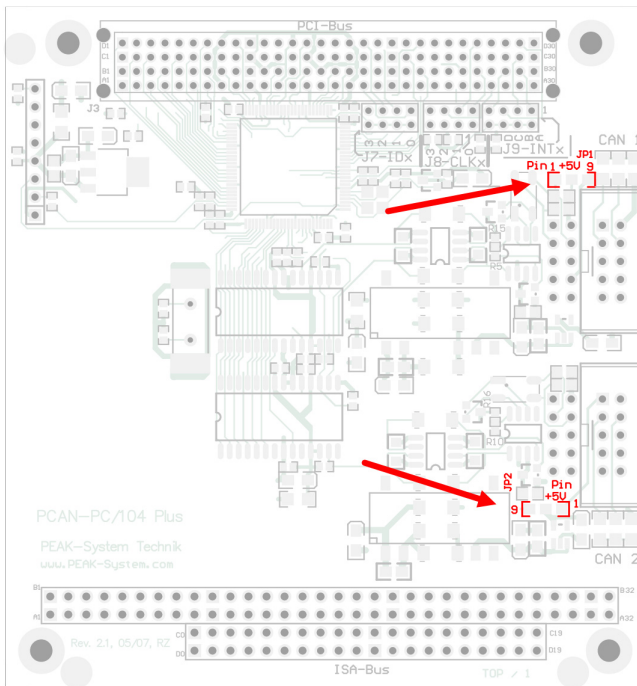


Figure 5: Positions of the solder fields on the PCAN-PC/104-Plus card for a 5-Volt supply (JP1 upper position, JP2 lower position)

5-Volt supply →	None	Pin 1	Pin 9	Pin 1 + Pin 9
JP1 (CAN channel 1)	<div> <div>1</div> <div>9</div> </div>	<div> <div>1</div> <div>9</div> </div>	<div> <div>1</div> <div>9</div> </div>	<div> <div>1</div> <div>9</div> </div>
JP2 (CAN channel 2)	<div> <div>9</div> <div>1</div> </div>	<div> <div>9</div> <div>1</div> </div>	<div> <div>9</div> <div>1</div> </div>	<div> <div>9</div> <div>1</div> </div>



Note: The pin labels for the CAN connector are related to the 9-pin D-Sub connector being connected via a cable to a socket on the card.



Attention! Risk of short circuit! If the option described in this section is activated, you may only connect or disconnect CAN cables or peripheral systems (e.g. bus converters) to or from the PCAN-PC/104-Plus card while the computer is de-energized.

3.3 Cabling

3.3.1 Termination

A High-speed CAN bus (ISO 11898-2) must be terminated on both ends with 120 Ohms. Otherwise, there are interfering signal reflections and the transceivers of the connected CAN nodes (CAN-interface, control device) will not work.

The PCAN-PC/104-Plus card does not have an internal termination. Use the card on a terminated CAN bus.

3.3.2 Example of a Connection

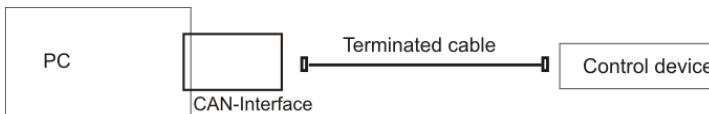


Figure 6: Simple CAN connection

In this example, the PCAN-PC/104-Plus card is connected with a control unit by a cable that is terminated at both ends.

3.3.3 Maximum Bus Length

High-speed CAN networks may have bit rates of up to 1 Mbit/s, where all CAN nodes must be able to process messages simultaneously. The maximum bus length depends primarily on the bit rate.

The following table shows the maximum possible CAN bus length at different bit rates:

Bit rate	Bus length
1 Mbit/s	40 m
500 kbit/s	110 m
250 kbit/s	240 m
125 kbit/s	500 m
50 kbit/s	1.3 km
20 kbit/s	3.3 km
10 kbit/s	6.6 km
5 kbit/s	13.0 km

The listed values have been calculated on the basis of an idealized system and can differ from reality.

4 Using the Software

This chapter covers the provided software PCAN-View and the programming interface PCAN-Basic.

4.1 CAN Monitor PCAN-View for windows

PCAN-View for Windows is a simple CAN monitor for viewing, transmitting, and logging CAN messages.

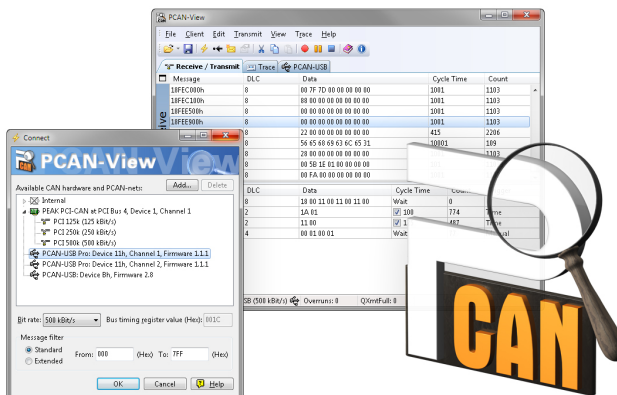


Figure 7: PCAN-View for Windows

► Do the following to start and initialize PCAN-View:

1. If PCAN-View is already installed on the hard disk, open the Windows Start menu, go to **Programs > PCAN-Hardware**, and select the entry **PCAN-View**.

If you haven't installed PCAN-View together with the device driver, you can start the program directly from the supplied CD. In the navigation program (**Intro.exe**), go to **English > Tools**, and under **PCAN-View for Windows** select the link **Start**.

The dialog box for selecting the CAN hardware and for setting the CAN parameters appears.

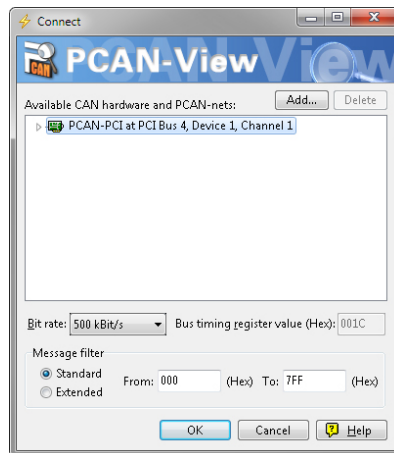
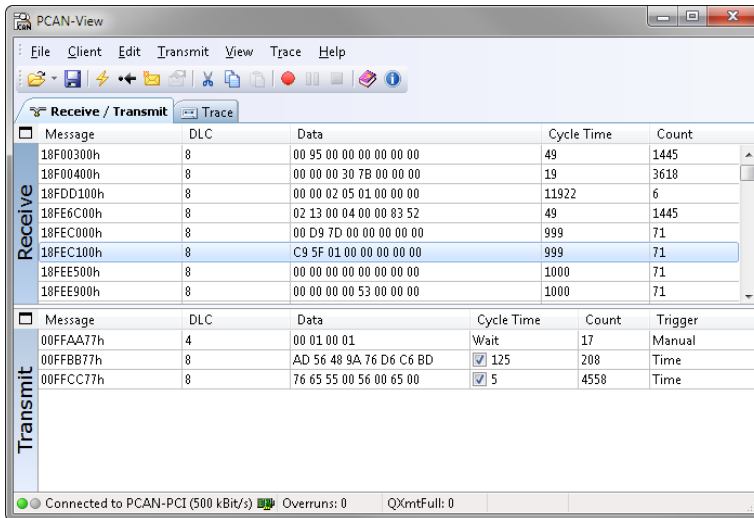


Figure 8: Selection of the CAN hardware and parameters

2. From the list **Available CAN hardware** select the CAN channel to be used.
3. Select the bit rate that is used by all nodes on the CAN bus from the dropdown list **Bit rate**.
4. Under **Filter settings** you can limit the range of CAN IDs to be received, either for standard frames (11-bit IDs) or for extended frames (29-bit IDs).
5. Finally confirm the settings in the dialog box with **OK**. The main window of PCAN-View appears (see Figure 9).

4.1.1 Receive/Transmit Tab




Message	DLC	Data	Cycle Time	Count
18F00300h	8	00 95 00 00 00 00 00 00	49	1445
18F00400h	8	00 00 00 30 7B 00 00 00	19	3618
18FDD100h	8	00 00 02 05 01 00 00 00	11922	6
18FE6C00h	8	02 13 00 04 00 00 83 52	49	1445
18FEC000h	8	00 D9 7D 00 00 00 00 00	999	71
18FEC100h	8	C9 5F 01 00 00 00 00 00	999	71
18FEE500h	8	00 00 00 00 00 00 00 00	1000	71
18FEE900h	8	00 00 00 00 53 00 00 00	1000	71

Message	DLC	Data	Cycle Time	Count	Trigger
00FFAA77h	4	00 01 00 01	Wait	17	Manual
00FFBB77h	8	AD 56 48 9A 76 D6 C6 BD	<input checked="" type="checkbox"/> 125	208	Time
00FFCC77h	8	76 65 55 00 56 00 65 00	<input checked="" type="checkbox"/> 5	4558	Time

Figure 9: Receive/Transmit Tab

The Receive/Transmit tab is the main element of PCAN-View. It contains two lists, one for received messages and one for the transmit messages. Representation of CAN data is in hexadecimal format.

▶ Do the following to transmit a CAN message with PCAN-View:

1. Select the menu command **Transmit > New Message** (alternatively  or **Ins**).

The dialog box **New Transmit Message** is shown.

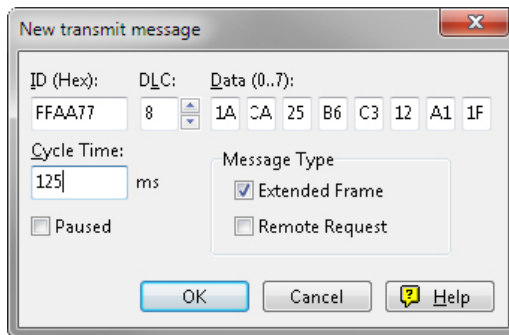


Figure 10: Dialog box New transmit message

2. Enter the ID and the data for the new CAN message.
3. The field **Cycle Time** indicates if the message shall be transmitted manually or periodically. If you want to transmit the message periodically, you must enter a value greater than 0. For a manual-only transmission enter 0
4. Confirm the entries with OK.

The created transmit message appears on the **Receive/Transmit** tab.

5. You trigger selected transmit messages manually with the menu command **Transmit > Send** (alternatively **Space** bar). The manual transmission for CAN messages being transmitted periodically is carried out additionally.



Tip: Using the menu command **File > Save** the current transmit messages can be saved to a list and loaded for reuse later on.

4.1.2 Trace Tab

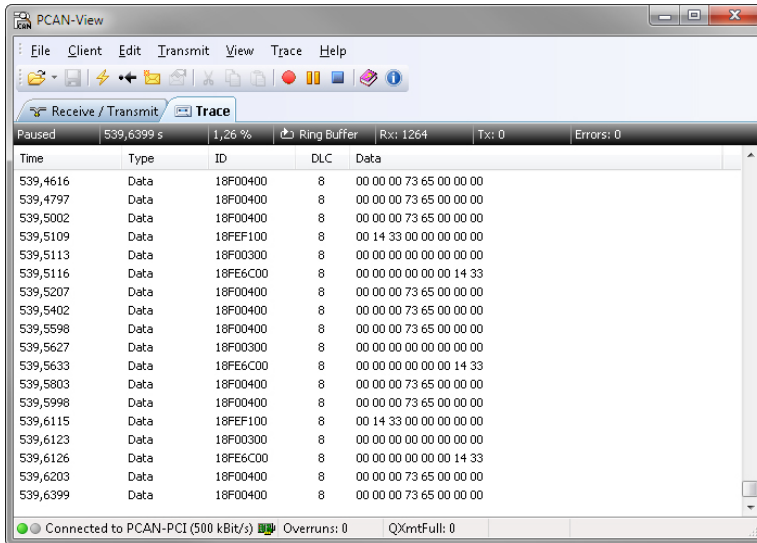


Figure 11: Trace Tab

On the Trace tab the data tracer of PCAN-View is used for logging the communication on a CAN bus. During this process the CAN messages are cached in the working memory of the PC. Afterwards they can be saved to a file.

The tracer can be configured to run in linear or in ring buffer mode. In linear buffer mode the logging is stopped as soon as the buffer is filled completely. In ring buffer mode the oldest messages are overwritten by incoming ones.

4.1.3 Status Bar

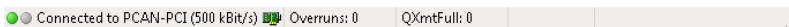


Figure 12: Display of the Status Bar

The status bar shows information about the current CAN connection, about error counters (Overruns, QXmtFull) and shows error messages.

You can find further information about the use of PCAN-View in the help which you can invoke in the program via the menu **Help** or the **F1** key.

4.2 Linking Own Programs with PCAN-Basic

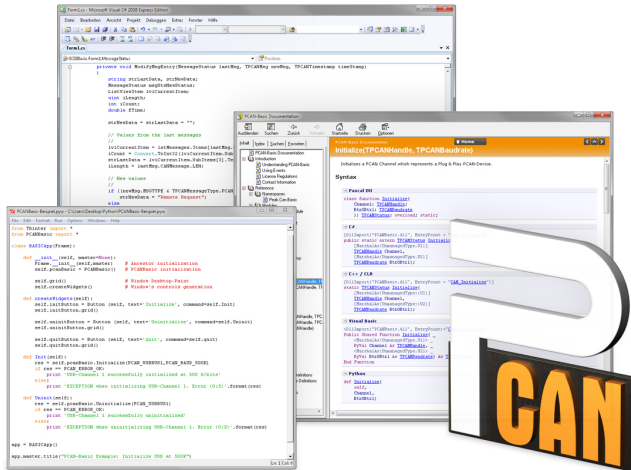


Figure 13: PCAN-Basic

On the provided CD you can find files of the programming interface PCAN-Basic in the directory branch `Develop`. This API provides basic functions for linking own programs to CAN interfaces by PEAK-System and can be used for the following operating systems:

- Windows 7/Vista/XP (32/64-bit)
- Windows CE 6.x (x86/ARMv4)

The API is designed for cross-platform use. Therefore software projects can easily be ported between platforms with low efforts. PEAK-System has created examples for the following programming languages: C++, C#, C++/CLR, Visual Basic, Delphi, Python, and Java.

4.2.1 Features of PCAN-Basic

- └ Supports Windows 7/Vista/XP (32/64-bit) and Windows CE 6.x operating system
- └ Multiple PEAK-System applications and your own can be operated on a physical CAN channel at the same time
- └ Use of a single DLL for all supported hardware types
- └ Use of up to 8 channels for each hardware unit (depending on the PEAK CAN interface used)
- └ Simple switching between the channels of a PEAK CAN interface
- └ Driver-internal buffer for 32,768 messages per CAN channel
- └ Precision of time stamps on received messages up to 1 μ s (depending on the PEAK CAN interface used)
- └ Access to specific hardware parameters, such as listen-only mode
- └ Notification of the application through Windows events when a message is received
- └ Extended system for debugging operations
- └ Multilingual debugging output
- └ Output language depends on operating systems
- └ Debugging information can be defined individually

An overview of the API functions is located in the header files. You can find detailed information about the PCAN-Basic API on the provided CD in the text and help files (file name extensions `.txt` and `.chm`).

4.2.2 Principle Description of the API

The PCAN-Basic API is the interface between the user application and device driver. In Windows operating systems this is a DLL (Dynamic Link Library).

The sequence of accessing the CAN interface is divided into three phases:

1. Initialization
2. Interaction
3. Completion

Initialization

A CAN channel must be initialized before using it. This is done by the simple call of the function `CAN_Initialize`. Depending on the type of the CAN hardware, up to eight CAN channels can be opened at the same time. After a successful initialization the CAN channel is ready for communication with the CAN hardware and the CAN bus. No further configuration steps are required.

Interaction

For receiving and transmitting CAN messages the functions `CAN_Read` and `CAN_Write` are available. Additional settings can be made, e.g. setting up message filters to confine to specific CAN IDs or setting the CAN controller to listen-only mode.

When receiving CAN messages, events are used for an automatic notification of an application (client). This offers the following advantages:

- The application no longer needs to check for received messages periodically (no polling).
- The response time at reception is reduced.

Completion

To end the communication the function `CAN_Uninitialize` is called in order to release the reserved resources for the CAN channel, among others. In addition the CAN channel is marked as "Free" and is available to other applications.

4.2.3 Notes about the License

Device drivers, the interface DLL, and further files needed for linking are property of the PEAK-System Technik GmbH and may be used only in connection with a hardware component purchased from PEAK-System or one of its partners. If a CAN hardware component of third-party suppliers should be compatible to one of PEAK-System, then you are not allowed to use or to pass on the driver software of PEAK-System.

If a third-party supplier develops software based on the PCAN-Basic and problems occur during the use of this software, consult the software provider.

5 Technical specifications

Connectors

PC/104-Plus	PCI bus (PC/104-Plus Version 2), 120-pin strip, for 3.3-Volt and 5-Volt systems ISA bus: optionally equipped stack-through connectors for the ISA signals
CAN	D-Sub (m), 9 pins Pin assignment according to specification CiA® 102

CAN

Specification	ISO 11898-2, High-speed CAN 2.0A (standard format) and 2.0B (extended format)
Bit rates	5 kbit/s - 1 Mbit/s
Controller	NXP SJA1000
Transceiver	NXP PCA82C251
Galvanic isolation	PCAN-PC/104-Plus: none PCAN-PC/104-Plus opto: up to 500 V, separate for each CAN channel
Supplying external devices	PCAN-PC/104-Plus: D-Sub pin1 / 9; 5 V, max. 100mA PCAN-PC/104-Plus opto: D-Sub pin1 / 9; 5 V, max. 50mA Not assigned at delivery
Termination	none

Supply

Supply voltage	4.75 - 5.25 V DC
Current consumption	PCAN-PC/104-Plus Single Channel: max. 150 mA PCAN-PC/104-Plus Dual Channel: max. 280 mA PCAN-PC/104-Plus Single Channel opto: max. 260 mA PCAN-PC/104-Plus Dual Channel opto: max. 490 mA

Continued on the next page

Measures

Dimension	about 90 x 96 x 15 mm; (stacking height; component height max. 11 mm) See also dimension drawing in Appendix B on page 32
Weight	PCAN-PC/104-Plus Single Channel: 46 g PCAN-PC/104-Plus Dual Channel: 50 g PCAN-PC/104-Plus Single Channel opto: 47 g PCAN-PC/104-Plus Dual Channel opto: 53 g

Environment

Operating temperature	-40 – 85 °C (-40 – 185 °F)
Temperature for storage and transport	-40 – 125 °C (-40 – 257 °F)
Relative humidity	15 – 90 %, not condensing
EMC	EN 55024:2003-10 EN 55022:2008-05 EC directive 2004/108/EG

Appendix A CE Certificate

PCAN-PC/104-Plus IPEH-002094/95/96/97 – EC Declaration of Conformity
PEAK-System Technik GmbH



Notes on the CE Symbol

The following applies to the PCAN-PC/104-Plus products
IPEH-002094/95/96/97

EC Directive

This product fulfills the requirements of EC directive
2004/108/EG on "Electromagnetic Compatibility" and is
designed for the following fields of application as per the
CE marking:

Electromagnetic Immunity

DIN EN 55024, Publication date: 2003-10
Information technology equipment, immunity characteristics - Limits and methods of
measurement (IEC/CISPR 24:1997, modified + A1:2001 + A2:2003);
German version EN 55024:1998 + A1:2001 + A2:2003

Electromagnetic Emission

DIN EN 55022, Publication date: 2008-05
Information technology equipment - Radio disturbance characteristics - Limits and methods
of measurement (IEC/CISPR 22:2005, modified + A1:2005);
German version EN 55022:2006 + A1:2007

Declarations of Conformity

In accordance with the above mentioned EU directives,
the EC declarations of conformity and the associated
documentation are held at the disposal of the competent
authorities at the address below:

PEAK-System Technik GmbH

Mr. Wilhelm
Otto-Roehm-Strasse 69
64293 Darmstadt
Germany

Phone: +49 (0)6151 8173-20
Fax: +49 (0)6151 8173-29
E-mail: info@peak-system.com

A handwritten signature in black ink, appearing to read "Uwe W. Sch."

Signed this 4th day of October 2011

Appendix B Dimension Drawing

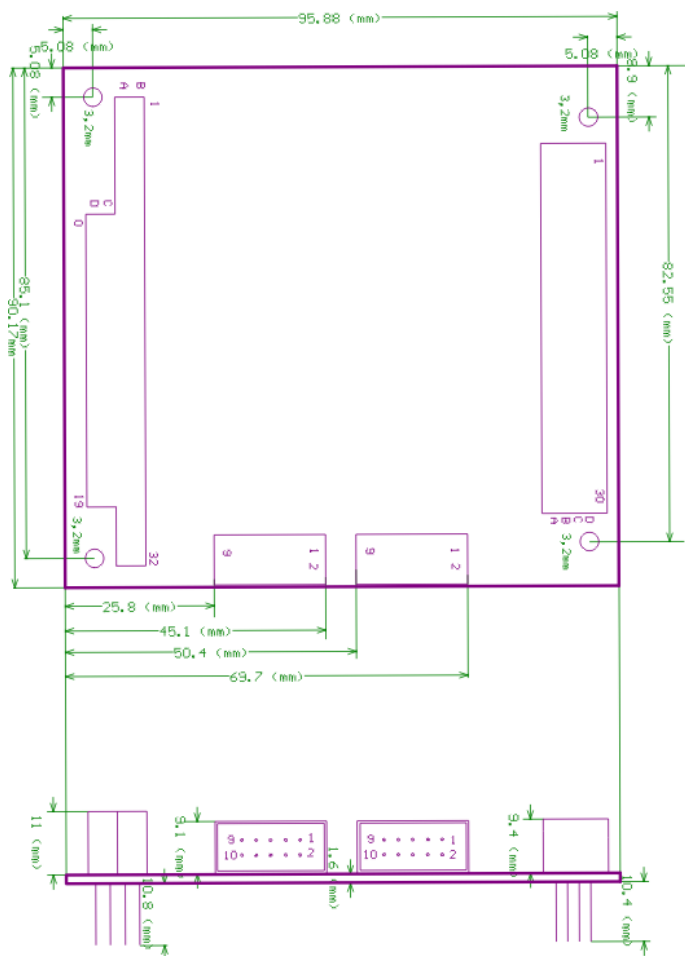


Figure 14: Dimension drawing PCAN-PC/104-Plus.

The figure doesn't show the actual size of the product.

Appendix C Quick Reference

Position of the card in the PC/104 stack

Jumper	Signal	Position in the PC/104 stack			
		1	2	3	4
J7	ID Select	0	1	2	3
J8	Clock Select	0	1	2	3
J9	Interrupt Select	A	B	C	D

Software/Hardware Installation under windows

Before installing the PCAN-PC/104-Plus card in the PC/104 stack, setup the corresponding software package from the supplied CD (with Administrator privileges). The card is recognized by Windows and the driver is initialized. After the installation process is finished successfully you can find the entry "PCAN-PC/104" in the branch "CAN-Hardware" of the Windows Device Manager.

Getting started under windows

Run the CAN monitor PCAN-View from the Windows Start menu as a sample application for accessing the PCAN-PC/104-Plus card. For initialization of the card select the CAN connection and the CAN bit rate.

High-speed CAN connector (D-Sub, 9 pins)

