

PCAN-PC Card

PC Card to CAN Interface

User Manual v2.1.1



Products taken into account

Product Name	Model	Part Number
PCAN-PC Card Single Channel	One CAN channel	IPEH-002090
PCAN-PC Card Dual Channel	Two CAN channels	IPEH-002091
PCAN-PC Card Single Channel opto-decoupled	One CAN channel, galvanic isolation for CAN connection	IPEH-002092
PCAN-PC Card Dual Channel opto-decoupled	Two CAN channels, galvanic isolation for CAN connections	IPEH-002093

The cover picture shows the product PCAN-PC Card Dual Channel. The Single Channel models have an identical form factor but only one breakout cable for the CAN connection.

CANopen® and CiA® are registered community trade marks of CAN in Automation e.V. |

All other product names mentioned in this document may be the trademarks or registered trademarks of their respective companies. They are not explicitly marked by "™" and "®".

© 2012 PEAK-System Technik GmbH

PEAK-System Technik GmbH
Otto-Roehm-Strasse 69
64293 Darmstadt
Germany

Phone: +49 (0)6151 8173-20
Fax: +49 (0)6151 8173-29

www.peak-system.com
info@peak-system.com

Document version 2.1.1 (2012-04-05)

Contents

1	Introduction	5
1.1	Properties at a Glance	5
1.2	System Requirements	6
1.3	Scope of Supply	6
2	Installing the Software and the Card	7
3	Connecting CAN Bus	9
3.1	D-Sub connectors	9
3.2	Supplying External Devices via the CAN Connector	10
3.3	Cabling	11
3.3.1	Termination	11
3.3.2	Example of a Connection	11
3.3.3	Maximum Bus Length	12
4	operation	13
4.1	Status LED	13
4.2	Removing the Card	13
5	Using the Software	14
5.1	CAN monitor PCAN-View for Windows	14
5.1.1	Receive/Transmit Tab	16
5.1.2	Trace Tab	18
5.1.3	PCAN-PC Card Tab	19
5.1.4	Status Bar	20
5.2	Linking Own Programs with PCAN-Basic	21
5.2.1	Features of PCAN-Basic	22
5.2.2	Principle Description of the API	23
5.2.3	Notes about the License	24

6 Technical Specifications PCAN-PC Card	25
Appendix A CE Certificate	27
Appendix B Dimension Drawing	28
Appendix C Quick Reference	29

1 Introduction

The PCAN-PC Card provides one or two CAN channels in computers with a PC Card slot. Device drivers and programming interfaces exist for different operating systems, so programs can easily access a connected CAN bus.



Tip: At the end of this manual (Appendix C) you can find a [Quick Reference](#) with brief information about the installation and operation of the PCAN-PC Card.

1.1 Properties at a Glance

- └ Slot-in card for the PC Card slot
- └ Form factor Type II, maximum 5 mm in height
- └ 1 or 2 High-speed CAN channels (ISO 11898-2)
- └ Compliant with CAN specifications 2.0A (11-bit ID) and 2.0B (29-bit ID)
- └ Bit rates up to 1 Mbit/s
- └ CAN bus connection via D-Sub, 9-pin (in accordance with CiA® 102)
- └ NXP SJA1000 CAN controller
- └ NXP PCA82C251 CAN transceiver
- └ Galvanic isolation on the CAN connection up to 100 V (only opto-decoupled models), separate for each CAN connection
- └ Software option to switch on 5 Volt supply to CAN connection, e.g. for external bus converter
- └ Operating temperature range from 0 to 70 °C (32 to 158 °F)



Note: This manual describes the use of the PCAN-PC Card with **Windows**. You can find device drivers for **Linux** and the corresponding application information on the provided CD in the directory branch `Develop` and on our website under www.peak-system.com/linux.

1.2 System Requirements

- A vacant PC Card slot at the computer, PCMCIA type II
- Operating system Windows 7/Vista/XP (32/64-bit) or Linux (32/64-bit)

1.3 Scope of supply

- CAN interface PCAN-PC Card
- Device drivers for Windows 7/Vista/XP (32/64-bit) and Linux (32/64-bit)
- PCAN-View CAN monitor for Windows
- PCAN-Basic programming interface consisting of an interface DLL, examples, and header files for all common programming languages
- Manual in PDF format

2 Installing the Software and the Card

This chapter covers the software setup for the PCAN-PC Card under Windows and the installation of the card in the computer.

Setup the driver before connecting the PCAN-PC Card to the computer.

▶ Do the following to install the driver:

1. Windows XP only: Make sure that you are logged in as user with administrator privileges (not needed for normal use of the PCAN-PC Card later on).
2. Insert the supplied CD into the appropriate drive of the computer. Usually a navigation program appears a few moments later. If not, start the file `Intro.exe` from the root directory of the CD.
3. On the page **English > Drivers** activate the entry **PCAN-PC Card**.
4. Click on **Install now**. The setup program for the driver is executed.
5. Follow the instructions of the program.



Tip: If you don't want to install the CAN monitor PCAN-View for Windows onto the hard disk together with the driver, you have the option to start the program later directly from CD without prior installation.

▶ Do the following to connect the PCAN-PC Card to the computer and complete the initialization:

1. Insert the PCAN-PC Card into a PC Card slot of your computer. The computer can remain powered on.

Windows notifies that new hardware has been detected.

2. Only Windows XP: A Wizard dialog box appears. Follow its instructions. Deny the search for driver software at Windows Update and select the automatic software installation during this procedure.

All Windows operating systems: The drivers are found and installed by Windows.

3. Afterwards you can work as user with restricted rights again.

After the installation process is finished successfully the LED on each CAN channel of the PCAN-PC Card is illuminated.

3 Connecting CAN Bus

The arrangement of the CAN channels at the PCAN-PC Card is as follows:

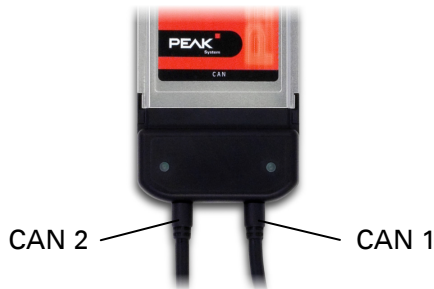


Figure 1: Arrangement of the CAN channels
(CAN 2 only with Dual Channel models)

3.1 D-Sub connectors

A High-speed CAN bus (ISO 11898-2) is connected to the 9-pin D-Sub connector. The pin assignment for CAN corresponds to the specification CiA® 102.

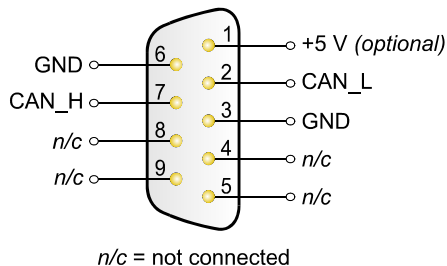


Figure 2: Pin assignment High-speed CAN
(view onto a male D-Sub connector at the PCAN-PC Card)

With pin 1 devices with low power consumption (e.g. bus converters) can be directly supplied via the CAN connector. At delivery this pin is deactivated. You can find a detailed description in the following section 3.2.



Tip: You can connect a CAN bus with a different transmission standard via a bus converter. PEAK-System offers different bus converter modules (e.g. PCAN-TJA1054 for a Low-speed CAN bus according to ISO 11898-3).

3.2 Supplying External Devices via the CAN Connector

Optionally a 5-Volt supply can be switched onto pin 1 of a D-Sub CAN connector (with the Dual Channel model simultaneously for both CAN connectors). Thus devices with low power consumption (e.g. bus converters) can be directly supplied via the CAN connector.

When using this option the 5-Volt supply is directly connected to the power supply of the PCAN-PC Card (coming from the computer) and is not fused separately. The opto-decoupled models of the card contain an interconnected DC/DC converter. Therefore the current output is limited to about 50 mA.

You find further information about the use of this option in PCAN-View in section 5.1.3 on page 19.



Attention! Risk of short circuit! If the option described in this section is activated, you may only connect or disconnect CAN cables or peripheral systems (e.g. bus converters) to or from the PCAN-PC Card while it is de-energized (the card is not connected to the computer). Consider that some computers still supply the PC Card slot with power even when they are turned off (standby operation).

3.3 Cabling

3.3.1 Termination

A High-speed CAN bus (ISO 11898-2) must be terminated on both ends with 120 Ohms. Otherwise, there are interfering signal reflections and the transceivers of the connected CAN nodes (CAN interface, control device) will not work.

The PCAN-PC Card does not have an internal termination. Use the adapter on a terminated CAN bus.

3.3.2 Example of a Connection

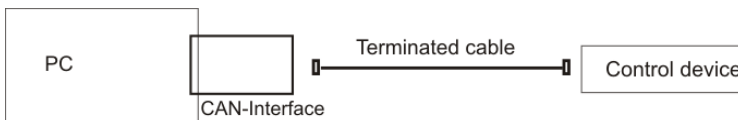


Figure 3: Simple CAN connection

In this example, the PCAN-PC Card is connected with a control unit by a cable that is terminated at both ends.

3.3.3 Maximum Bus Length

High-speed CAN networks may have bit rates of up to 1 Mbit/s, where all CAN nodes must be able to process messages simultaneously. The maximum bus length depends primarily on the bit rate.

The following table shows the maximum possible CAN bus length at different bit rates:

Bit rate	Bus length
1 Mbit/s	40 m
500 kbit/s	110 m
250 kbit/s	240 m
125 kbit/s	500 m
50 kbit/s	1.3 km
20 kbit/s	3.3 km
10 kbit/s	6.6 km
5 kbit/s	13.0 km

The listed values have been calculated on the basis of an idealized system and can differ from reality.

4 operation

4.1 Status LED

The PCAN-PC Card has a status LED for each existing CAN channel which may be in one of the following conditions:

Status	Meaning
On	There's a connection to a driver of the operating system
Slow blinking	A software application is connected to the CAN channel
Quick blinking	Data is transmitted via the connected CAN bus

4.2 Removing the Card

Under Windows the icon for removing hardware safely is not used with the PCAN-PC Card. You may remove the card from the computer without any preparation under Windows.

5 Using the Software

This chapter covers the provided software PCAN-View and the programming interface PCAN-Basic.

5.1 CAN monitor PCAN-View for windows

PCAN-View for Windows is a simple CAN monitor for viewing, transmitting, and logging CAN messages.

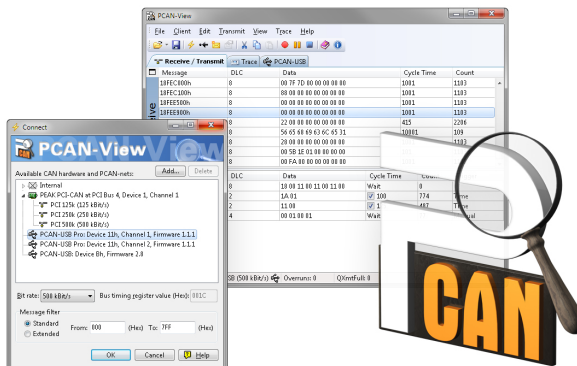


Figure 4: PCAN-View for Windows

▶ Do the following to start and initialize PCAN-View:

1. If PCAN-View is already installed on the hard disk, open the Windows Start menu, go to **Programs > PCAN-Hardware**, and select the entry **PCAN-View**.

If you haven't installed PCAN-View together with the device driver, you can start the program directly from the supplied CD. In the navigation program (**Intro.exe**) go to **English > Tools**, and under **PCAN-View for Windows** select the link **Start**.

The dialog box for selecting the CAN hardware and for setting the CAN parameters appears.

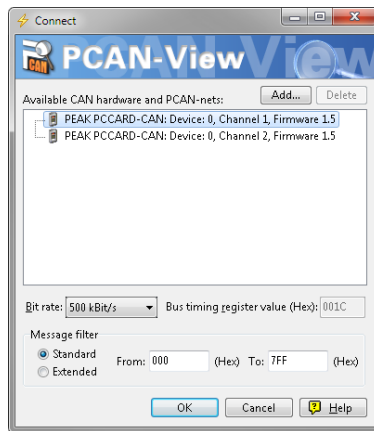
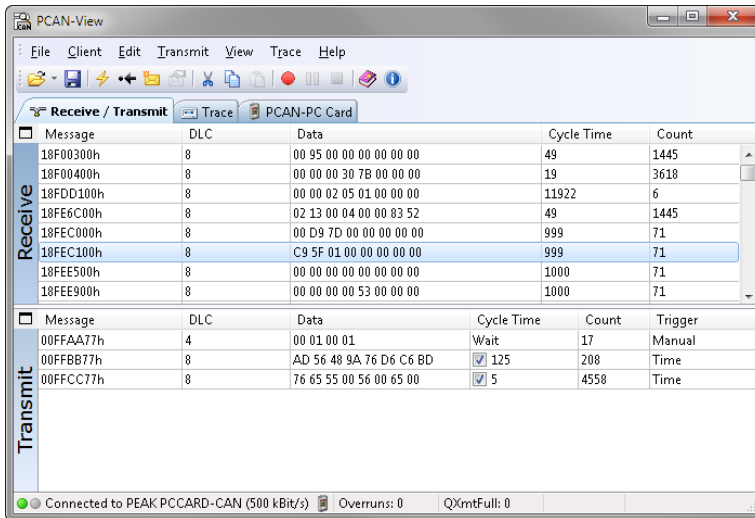


Figure 5: Selection of the CAN hardware and parameters

2. From the list **Available CAN hardware** select the CAN channel to be used.
3. Select the bit rate that is used by all nodes on the CAN bus from the dropdown list **Bit rate**.
4. Under **Filter settings** you can limit the range of CAN IDs to be received, either for standard frames (11-bit IDs) or for extended frames (29-bit IDs).
5. Finally confirm the settings in the dialog box with **OK**. The main window of PCAN-View appears (see Figure 6).

5.1.1 Receive/Transmit Tab




Message	DLC	Data	Cycle Time	Count
18F00300h	8	00 95 00 00 00 00 00 00	49	1445
18F00400h	8	00 00 00 30 7B 00 00 00	19	3618
18FDD100h	8	00 00 02 05 01 00 00 00	11922	6
18FE6C00h	8	02 13 00 04 00 00 83 52	49	1445
18FEC000h	8	00 D9 7D 00 00 00 00 00	999	71
18FEC100h	8	C9 5F 01 00 00 00 00 00	999	71
18FEE500h	8	00 00 00 00 00 00 00 00	1000	71
18FEE900h	8	00 00 00 00 53 00 00 00	1000	71

Message	DLC	Data	Cycle Time	Count	Trigger
00FFAA77h	4	00 01 00 01	Wait	17	Manual
00FFBB77h	8	AD 56 48 9A 76 D6 C6 BD	<input checked="" type="checkbox"/> 125	208	Time
00FFCC77h	8	76 65 55 00 56 00 65 00	<input checked="" type="checkbox"/> 5	4558	Time

Figure 6: Receive/Transmit Tab

The Receive/Transmit tab is the main element of PCAN-View. It contains two lists, one for received messages and one for the transmit messages. Representation of CAN data is in hexadecimal format.

▶ Do the following to transmit a CAN message with PCAN-View:

1. Select the menu command **Transmit > New Message** (alternatively  or **Ins**).

The dialog box **New Transmit Message** is shown.

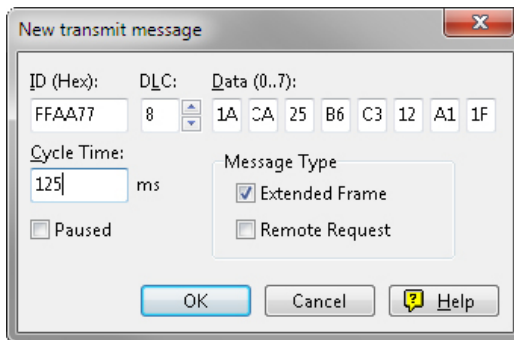


Figure 7: Dialog box New transmit message

2. Enter the ID and the data for the new CAN message.
3. The field **Cycle Time** indicates if the message shall be transmitted manually or periodically. If you want to transmit the message periodically, you must enter a value greater than 0. For a manual-only transmission enter 0.
4. Confirm the entries with **OK**.

The created transmit message appears on the **Receive/Transmit** tab.

5. You trigger selected transmit messages manually with the menu command **Transmit > Send** (alternatively **Space** bar). The manual transmission for CAN messages being transmitted periodically is carried out additionally.



Tip: Using the menu command **File > Save** the current transmit messages can be saved to a list and loaded for reuse later on.

5.1.2 Trace Tab

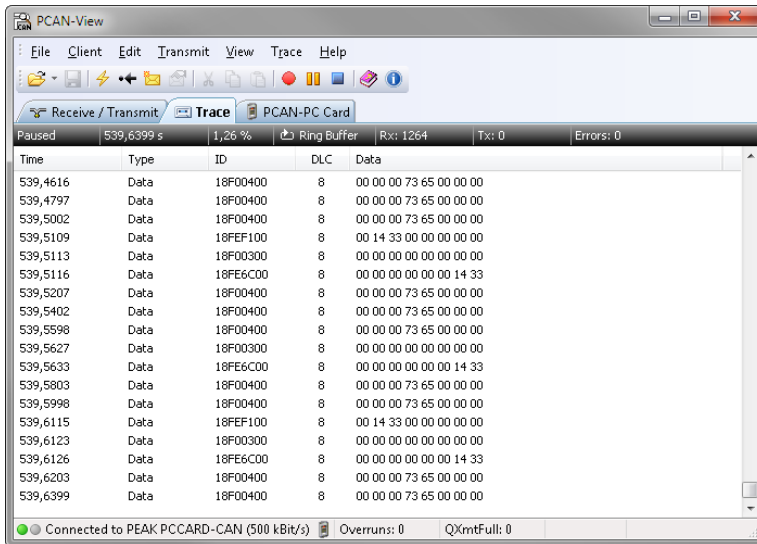


Figure 8: Trace Tab

On the Trace tab the data tracer of PCAN-View is used for logging the communication on a CAN bus. During this process the CAN messages are cached in the working memory of the PC. Afterwards they can be saved to a file.

The tracer can be configured to run in linear or in ring buffer mode. In linear buffer mode the logging is stopped as soon as the buffer is filled completely. In ring buffer mode the oldest messages are overwritten by incoming ones.

5.1.3 PCAN-PC Card Tab

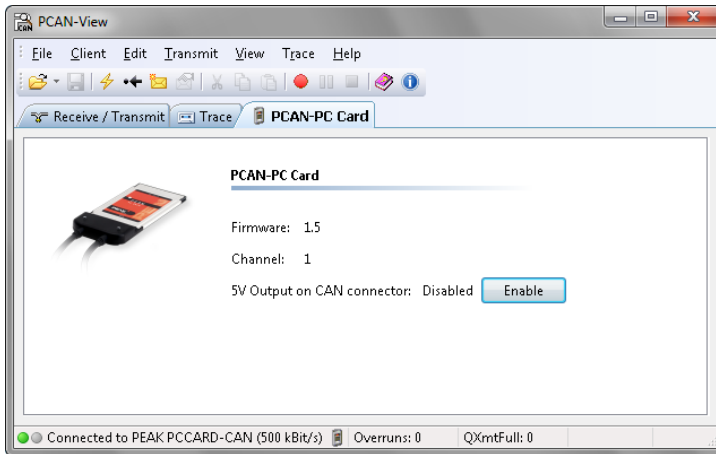


Figure 9: PCAN-PC Card Tab

On the PCAN-PC Card tab the 5-Volts supply on pin 1 of the D-Sub CAN connector is enabled or disabled. For the Dual Channel model the setting is valid for both CAN connectors simultaneously. You find information about technical details in section 3.2 on page 10.

To toggle the setting press the button **Enable / Disable**.



Attention! Risk of short circuit! If the option described in this section is activated, you may only connect or disconnect CAN cables or peripheral systems (e.g. bus converters) to or from the PCAN-PC Card while it is de-energized (the card is not connected to the computer). Consider that some computers still supply the PC Card slot with power even when they are turned off (standby operation).

5.1.4 Status Bar

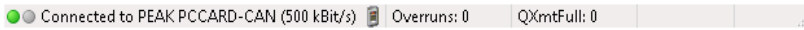


Figure 10: Example of a status bar

The status bar shows information about the current CAN connection, about error counters (Overruns, QXmtFull), and shows error messages.

You can find further information about the use of PCAN-View in the help which you can invoke in the program via the menu **Help** or the **F1** key.

5.2 Linking Own Programs with PCAN-Basic

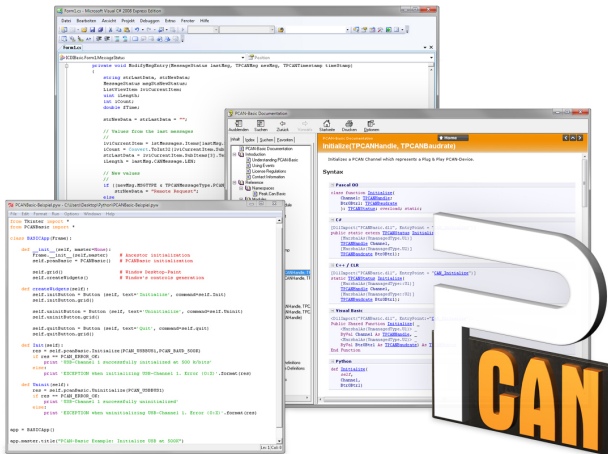


Figure 11: PCAN-Basic

On the provided CD you can find files of the programming interface PCAN-Basic in the directory branch `Develop`. This API provides basic functions for linking own programs to CAN interfaces by PEAK-System and can be used for the following operating systems:

- Windows 7/Vista/XP (32/64-bit)
- Windows CE 6.x (x86/ARMv4)

The API is designed for cross-platform use. Therefore software projects can easily ported between platforms with low efforts. PEAK-System has created examples for the following programming languages: C++, C#, C++/CLR, Visual Basic, Delphi, Python, and Java.

5.2.1 Features of PCAN-Basic

- └ Supports Windows 7/Vista/XP (32/64-bit) and Windows CE 6.x operating system
- └ Multiple PEAK-System applications and your own can be operated on a physical CAN channel at the same time
- └ Use of a single DLL for all supported hardware types
- └ Use of up to 8 channels for each hardware unit (depending on the PEAK CAN interface used)
- └ Simple switching between channels of a PEAK CAN interface
- └ Driver-internal buffer for 32,768 messages per CAN channel
- └ Precision of time stamps on received messages up to 1 μ s (depending on the PEAK CAN interface used)
- └ Access to specific hardware parameters, such as listen-only mode
- └ Notification of the application through Windows events when a message is received
- └ Extended system for debugging operations
- └ Multilingual debugging output
- └ Output language depends on operating system
- └ Debugging information can be defined individually

An overview of the API functions is located in the header files. You can find detailed information about the PCAN-Basic API on the provided CD in the text and help files (file name extensions `.txt` and `.chm`).

5.2.2 Principle Description of the API

The PCAN-Basic API is the interface between the user application and device driver. In Windows operating systems this is a DLL (Dynamic Link Library).

The sequence of accessing the CAN interface is divided into three phases:

1. Initialization
2. Interaction
3. Completion

Initialization

A CAN channel must be initialized before using it. This is done by the simple call of the function `CAN_Initialize`. Depending on the type of the CAN hardware, up to eight CAN channels can be opened at the same time. After a successful initialization the CAN channel is ready for communication with the CAN hardware and the CAN bus. No further configuration steps are required.

Interaction

For receiving and transmitting CAN messages the functions `CAN_Read` and `CAN_Write` are available. Additional settings can be made, e.g. setting up message filters to confine to specific CAN IDs or setting the CAN controller to listen-only mode.

When receiving CAN messages, events are used for an automatic notification of an application (client). This offers the following advantages:

- The application no longer needs to check for received messages periodically (no polling).
- The response time at reception is reduced.

Completion

To end the communication the function `CAN_Uninitialize` is called in order to release the reserved resources for the CAN channel, among others. In addition the CAN channel is marked as "Free" and is available to other applications.

5.2.3 Notes about the License

Device drivers, the interface DLL, and further files needed for linking are property of the PEAK-System Technik GmbH and may be used only in connection with a hardware component purchased from PEAK-System or one of its partners. If a CAN hardware component of third-party suppliers should be compatible to one of PEAK-System, then you are not allowed to use or to pass on the driver software of PEAK-System.

If a third-party supplier develops software based on the PCAN-Basic and problems occur during the use of this software, consult the software provider.

6 Technical specifications

Connectors

Computer	PC Card PCMCIA type II (16-bit, 5 V)
CAN	D-Sub (m), 9 pins (at Dual Channel model 2 x) Pin assignment according to specification CiA® 102

CAN

Specification	ISO 11898-2, High-speed CAN 2.0A (standard format) and 2.0B (extended format)
Bit rates	5 kbit/s - 1 Mbit/s
Controller	NXP SJA1000
Transceiver	NXP PCA82C251
Galvanic isolation	PCAN-PC Card: none PCAN-PC Card opto: up to 100 V, separate for each CAN channel
Supply external devices	PCAN-PC Card: D-Sub Pin 1; 5 V, max. 100 mA PCAN-PC Card opto: D-Sub Pin 1; 5 V, max. 50 mA Not assigned at delivery
Termination	none

Power supply

Supply voltage	+5 V DC (via PC Card slot)	
Power consumption	PCAN-PC Card Single Channel:	max. 150 mA
	PCAN-PC Card Dual Channel:	max. 250 mA
	PCAN-PC Card Single Channel opto:	max. 250 mA
	PCAN-PC Card Dual Channel opto:	max. 400 mA

Measures

Size (without cables)	116 x 54 x 12 mm (L x W x D)	
Weight	PCAN-PC Card Single Channel:	55 g
	PCAN-PC Card Dual Channel:	75 g
	PCAN-PC Card Single Channel opto:	55 g
	PCAN-PC Card Dual Channel opto:	76 g

Continued on the next page

Environment

Operating temperature	0 - +70 °C (32 – 158 °F)
Storage temperature	-40 - +100 °C (-40 - +212 °F)
Relative humidity	15 - 90 %, not condensing
EMC	EN 55024:2003-10 EN 55022:2008-05 EC directive 2004/108/EG
Ingress protection (IEC 60529)	IP30

Appendix A CE Certificate

PCAN-PC Card IPEH-002090/91/92/93 – EC Declaration of Conformity
PEAK-System Technik GmbH



Notes on the CE Symbol

The following applies to the PCAN-PC Card products
IPEH-002090/91/92/93

EC Directive

This product fulfills the requirements of EC directive
2004/108/EG on "Electromagnetic Compatibility" and is
designed for the following fields of application as per the
CE marking:

Electromagnetic Immunity

DIN EN 55024, Publication date: 2003-10
Information technology equipment, immunity characteristics - Limits and methods of
measurement (IEC/CISPR 24:1997, modified + A1:2001 + A2:2003);
German version EN 55024:1998 + A1:2001 + A2:2003

Electromagnetic Emission

DIN EN 55022, Publication date: 2008-05
Information technology equipment - Radio disturbance characteristics - Limits and methods
of measurement (IEC/CISPR 22:2005, modified + A1:2005);
German version EN 55022:2006 + A1:2007

Declarations of Conformity

In accordance with the above mentioned EU directives,
the EC declarations of conformity and the associated
documentation are held at the disposal of the competent
authorities at the address below:

PEAK-System Technik GmbH

Mr. Wilhelm
Otto-Roehm-Strasse 69
64293 Darmstadt
Germany

Phone: +49 (0)6151 8173-20
Fax: +49 (0)6151 8173-29
E-mail: info@peak-system.com

A handwritten signature in black ink, appearing to read "V. Wilhelm".

Signed this 4th day of October 2011

Appendix B Dimension Drawing

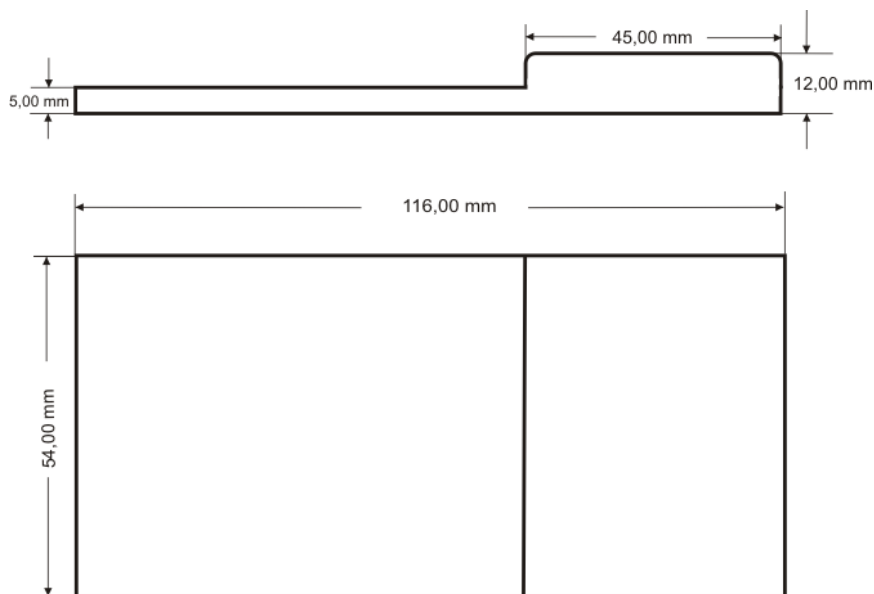


Figure 12: View PCAN-PC Card

The figure doesn't show the actual size of the product.

Appendix C Quick Reference

Software/Hardware Installation under windows

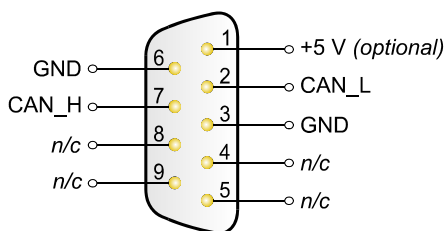
Before connecting the PCAN-PC Card to the computer set up the corresponding software package from the supplied CD (with administrator privileges). Afterwards insert the card into a PC Card slot of the computer. The card is recognized by Windows and the driver is initialized. After the installation process is finished successfully a LED for each CAN channel of the card is illuminated.

Getting started under windows

Run the CAN monitor PCAN-View from the Windows Start menu as a sample application for accessing the PCAN-PC Card. For initialization of the PCAN-PC Card select the desired CAN channel and the CAN bit rate.

Status-LED	Meaning
On	There's a connection to a driver of the operating system
Slowly blinking	A software application is connected to the CAN channel
Quick blinking	Data is transmitted via the connected CAN bus

High-speed CAN connector (D-Sub, 9 pins)



n/c = not connected