

PCAN-AU5790

Bus Converter High-speed CAN
to Single-wire CAN

User Manual v2.0.0



Products taken into account

| Product Name | Model | Part number |
|--------------|-------|-------------|
| PCAN-AU5790 | | IPEH-002040 |

CANopen® and CiA® are registered community trade marks of CAN in Automation e.V.

All other product names mentioned in this document may be the trademarks or registered trademarks of their respective companies. They are not explicitly marked by "™" and "®".

© 2011 PEAK-System Technik GmbH

PEAK-System Technik GmbH
Otto-Roehm-Strasse 69
64293 Darmstadt
Germany

Phone: +49 (0)6151 8173-20
Fax: +49 (0)6151 8173-29

www.peak-system.com
info@peak-system.com

Document version 2.0.0 (2011-10-05)

Contents

| | | |
|-------------------|---|-----------|
| 1 | Introduction | 4 |
| 1.1 | Properties at a Glance | 4 |
| 1.2 | Scope of Supply | 5 |
| 2 | Connectors | 6 |
| 2.1 | D-Sub Socket: High-speed CAN, Primary Voltage Supply | 6 |
| 2.1.1 | Supply Voltage V_{main} | 6 |
| 2.1.2 | Voltage Supply Alternatively via Pin 9 | 7 |
| 2.1.3 | Termination High-Speed-CAN | 8 |
| 2.2 | D-Sub Plug: Single-wire CAN, Secondary Voltage Supply | 9 |
| 2.2.1 | Ground Connection (GND) | 9 |
| 2.2.2 | Additional Supply Voltage V_{aux} | 9 |
| 2.2.3 | Termination Single-wire CAN | 9 |
| 3 | Operation | 10 |
| 3.1 | Status LEDs | 10 |
| 3.2 | Single-wire CAN Operation Modes | 10 |
| 3.2.1 | Normal Mode | 11 |
| 3.2.2 | High-speed Mode | 11 |
| 3.2.3 | Wake-up Mode | 11 |
| 3.3 | CAN Bit Rate | 12 |
| 4 | Technical Specifications PCAN-AU5790 | 13 |
| Appendix A | CE Certificate | 15 |
| Appendix B | Dimension Drawing | 16 |
| Appendix C | Quick Reference | 17 |

1 Introduction



Tip: At the end of this manual (Appendix C) you can find a **Quick Reference** with brief information about the installation and operation of the PCAN-AU5790.

The bus converter PCAN-AU5790 establishes a connection between a High-speed CAN bus (ISO 11898-2) and a Single-wire CAN bus (SAE J2411). It is designed for direct connection of a CAN interface of the PCAN series (e.g. PCAN-USB) to a Single-wire CAN bus. The term AU5790 refers to the transceiver of the same name. This (or a compatible transceiver) is used in the bus converter for the connection to the Single-wire CAN bus.

Single-wire CAN

Single-wire CAN only uses one signal line in contrast to High-speed CAN. Single-wire CAN is used in motor vehicles. The bodywork functions as ground of the bus. Therefore the Single-wire CAN bus actually consists of an unipolar line and thus reduces the overhead of the wiring through the motor vehicle. On the other hand the highest possible transmission rate is considerably lower than for High-speed CAN.

1.1 Properties at a Glance

- Three operation modes for Single-wire CAN (Normal/High-speed/Wake-up), configurable by slide switch
- Status LEDs for power supply and wake-up signals
- Voltage supply (5 V, 150 mA) via High-speed CAN connection
- On voltage supply with lower current delivery than 150 mA additional voltage supply (12 V) via Single-wire CAN connection necessary

- Operating temperature range from 0 to 70 °C (32 to 185 °F)



Note: You can find additional information about the properties and the behavior of the Single-wire CAN transceiver AU5790 in the corresponding data sheet which you can download, for example, from the NXP website: www.nxp.com

1.2 scope of supply

- Bus converter PCAN-AU5790 (plastic casing with two ports and slide switch)
- Manual in PDF format

2 Connectors

2.1 D-Sub Socket: High-speed CAN, Primary Voltage Supply

The bus converter PCAN-AU5790 is designed for the use as add-on module for a CAN interface of the PCAN series (e.g. PCAN-USB). As an extension it is directly connected to the CAN interface with the High-speed CAN side (D-Sub socket).



Attention! Risk of short circuit! When you connect the PCAN-AU5790 to or remove it from the CAN interface, latter must be turned off (without supply voltage). The PCAN-AU5790 or other electronic components may be damaged.

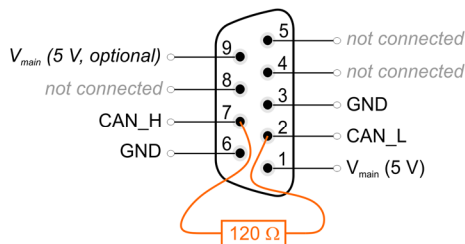



Figure 1: Pin assignment High-speed CAN side (D-Sub socket)

2.1.1 Supply Voltage V_{main}

For the bus converter operation a direct voltage of 5 V (V_{main}) is needed. The voltage source must be able to supply a current of up to 150 mA.


 **Note:** If the voltage source cannot supply a current up to 150 mA, an additional voltage supply must be used on V_{aux} at the Single-wire CAN connection. This applies, for example, to all CAN interfaces of the PCAN series with galvanic isolation (“opto-decoupled”).

For the voltage supply of the bus converter a CAN interface of the PCAN series must be configured so that the 5-Volts supply of the computer is routed to either pin 1 or pin 9 of the High-speed CAN connector. Please take detailed notes from the documentation of the respective CAN interface.

When the 5-Volt supply is active, the **red LED** on the PCAN-AU5790 is on.

2.1.2 voltage Supply Alternatively via Pin 9

The bus converter is pre-configured to be supplied via pin 1 of the connector. Alternatively the voltage supply V_{main} can be done via pin 9. For that a modification must be done on the PCB of the PCAN-AU5790.

 **Important note:** Perform the following procedure with special care, because soldering can incur unintentional short circuits on the PCB. This can lead to damage of the bus converter or the connected hardware.

 Do the following to route the voltage supply via pin 9:

1. Open the plastic casing of the PCAN-AU5790 by cautiously levering the latches on both sides, e.g. with a flat tip screwdriver.
2. On the bottom side of the PCB in the soldering field JP1, a 0-Ohm resistor connects the lower two pads (see Figure 2). Unsolder the resistor and replace it so that it connects the

upper two pads. Alternatively, you can remove the resistor and connect the pads with a solder bridge.

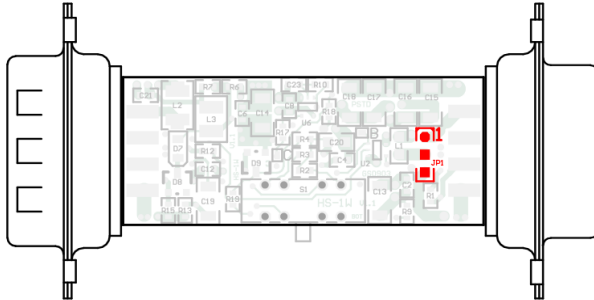




Figure 2: Position of soldering field JP1
on the bottom side of the opened PCAN-AU5790

| Voltage supply via... | Pin 1 | Pin 9 |
|-----------------------|---|---|
| Connected pads on JP1 |  |  |

- Put together the two parts of the casing on the bus converter. Pay attention to the correct position because of the LEDs and the switch.

2.1.3 Termination High-Speed-CAN

The High-speed CAN lines CAN_L and CAN_H are terminated in the bus converter with an 120-Ohm resistor. This termination is unalterable.

2.2 D-Sub Plug: Single-wire CAN, Secondary Voltage Supply

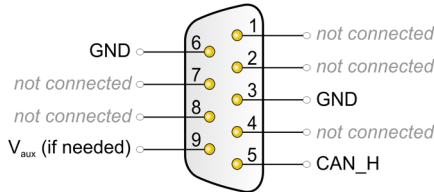


Figure 3: Pin assignment Single-wire CAN side (D-Sub plug)

2.2.1 Ground Connection (GND)

For pin allocation it has to be taken into account that a ground connection (via GND) to all other CAN nodes is needed on the Single-wire CAN bus. In motor vehicles this is usually done via bodywork.

2.2.2 Additional Supply Voltage V_{aux}

The additional supply voltage V_{aux} with 12 V DC (e.g. car battery, 6 - 16 V possible, at wake-up mode 12 V min.) is needed if the 5-Volt supply V_{main} at the High-speed CAN connector cannot provide up to 150 mA current. This applies, for example, to all CAN interfaces of the PCAN series with galvanic isolation ("opto-decoupled").



Note: The 5-Volt supply V_{main} at the High-speed CAN connector must remain when using V_{aux} .

2.2.3 Termination Single-wire CAN

On the Single-wire CAN side the PCAN-AU5790 is terminated internally with 5.1 k Ω . The Single-wire CAN specification does not include an external termination of the bus converter with a terminating resistor.

3 operation

3.1 Status LEDs

| LED | Meaning |
|--------|--|
| Red | Power supply 5 V |
| Yellow | Reception/transmission of wake-up signals on the Single-wire CAN bus (see also section 3.2.3 <i>Wake-up</i> Mode on page 11) |

3.2 single-wire CAN Operation Modes

The PCAN-AU5790 can be operated in three different Single-wire CAN modes. They are determined by the slide switch at the side of the casing.

| Switch position | Mode | Description |
|-----------------|------------|--|
| Middle | Normal | Up to 33.3 kbit/s, with waveshaping |
| Right | High-speed | Up to 83.3 kbit/s, without waveshaping |
| Left | Wake-up | Like normal mode, but with increased signal levels |

The **Sleep mode**, defined in addition for Single-wire CAN, is not supported.



Note: To prevent mistakes: The term “high-speed mode” in this manual refers to Single-wire CAN and does not have a direct relation to High-speed CAN.

3.2.1 Normal Mode

This mode is used for normal operation. Bit rates up to 33.3 kbit/s are supported. The output of signals on the Single-wire CAN bus is done with waveshaping. The voltage slew rate and the shape of the rising edge as well as the beginning of the falling edge are controlled. This behavior contributes to the minimization of EM emissions.

3.2.2 High-speed Mode

The PCAN-AU5790 provides a high-speed mode for the transfer of software or diagnostic data, for example. Bit rates up to 83.3 kbit/s can be used. In contrast to the normal mode, the waveshaping function is deactivated, i.e. the bus driver is switched on and off as fast as possible to be able to reach higher bit rates. However, the electromagnetic compatibility (EMC) consequently is reduced in comparison to the normal mode.

The high-speed mode is only used in special cases and shouldn't be used for regular operation of a Single-wire CAN bus.

3.2.3 Wake-up Mode

In this mode transmission is done with an increased level in comparison to the normal mode. An activation of all "sleeping" bus nodes in the network results from it. Sleeping bus nodes ignore normal 4-Volt levels and only react to levels with higher voltage (12 V). Because the PCAN-AU5790 itself does not have a sleep mode, incoming signals are all interpreted in the same manner independently of their level (normal or wake-up).

The **yellow LED** indicates a received or transmitted signal with wake-up level. After detection the LED switches off again with delay. Thus signals of short duration are also recognized.

3.3 CAN Bit Rate

When operating the PCAN-AU5790 it must be ensured that the bit rate on the High-speed CAN bus matches the one on the Single-wire CAN bus. No conversion or automatic adaptation of the bit rate is done in the bus converter.

Usual bit rate for Single-wire CAN:

- └ 33.3 kbit/s (normal mode, wake-up mode)
- └ 83.3 kbit/s (high-speed mode)

4 Technical specifications

PCAN-AU5790

Power supply

| | |
|---------------------|--|
| Supply voltage | 5 V DC, at least 150 mA (via High-speed CAN connection) 12 V DC <u>additionally</u> , if the available amperage of the 5-Volt supply < 150 mA (via Single-wire CAN connection; 6 - 16 V possible, at least 12 V for wake-up mode) |
| Current consumption | 20 mA average, 120 mA maximum |

High-speed CAN

| | |
|---------------|---|
| Specification | ISO 11898-2 CAN specifications 2.0A and 2.0B |
| Transceiver | PCA82C251 |
| Connector | D-Sub socket, 9-pin, pin assignment according to specification CiA® 102 |
| Termination | 120 Ω (unalterable) |

Single-wire CAN

| | |
|-----------------------------|--|
| Specification | SAE J2411 |
| Transceiver | AU5790 or compatible |
| Connector | D-Sub plug, 9-pin |
| Termination | 5.1 k Ω |
| Operating modes (bit rates) | normal (33.3 kbit/s), high-speed (83.3 kbit/s), wake-up (33.3 kbit/s) |

Wake-up LED (yellow)

| | |
|-------------------|--------------------------------|
| Pulse width | > 0.5 s |
| Delay time signal | > 5 μ s (at 11-Volt pulse) |
| Threshold signal | 8.2 V |

Measures

| | |
|--------|--|
| Size | 63 x 34 x 19 mm (L x W x H) See also dimension drawing in Appendix B on page 16 |
| Weight | 26 g |

Environment

| | |
|---------------------------------------|--|
| Operating temperature | 0 - 70 °C (32 - 158 °F) |
| Temperature for storage and transport | -40 - +100 °C (-40 - +212 °F) |
| Relative humidity | 15% - 90%, not condensing |
| EMC | EN 55024:2003-10 EN 55022:2008-05 EC directive 2004/108/EG |
| Ingress protection (IEC 60529) | IP20 |

Appendix A CE Certificate

PCAN-AU5790 IPEH-002040 – EC Declaration of Conformity
PEAK-System Technik GmbH



Notes on the CE Symbol

The following applies to the PCAN-AU5790 product
IPEH-002040

EC Directive

This product fulfills the requirements of EC directive
2004/108/EG on "Electromagnetic Compatibility" and is
designed for the following fields of application as per the
CE marking:

Electromagnetic Immunity

DIN EN 55024, Publication date: 2003-10
Information technology equipment, immunity characteristics – Limits and methods of
measurement (IEC/CISPR 24:1997, modified + A1:2001 + A2:2003);
German version EN 55024:1998 + A1:2001 + A2:2003

Electromagnetic Emission

DIN EN 55022, Publication date: 2008-05
Information technology equipment – Radio disturbance characteristics – Limits and methods
of measurement (IEC/CISPR 22:2005, modified + A1:2005);
German version EN 55022:2006 + A1:2007

Declarations of Conformity

In accordance with the above mentioned EU directives,
the EC declarations of conformity and the associated
documentation are held at the disposal of the competent
authorities at the address below:

PEAK-System Technik GmbH

Mr. Wilhelm
Otto-Roehm-Strasse 69
64293 Darmstadt
Germany

Phone: +49 (0)6151 8173-20
Fax: +49 (0)6151 8173-29
E-mail: info@peak-system.com

A handwritten signature in black ink, appearing to read "V. Wilhelm".

Signed this 4th day of October 2011

Appendix B Dimension Drawing

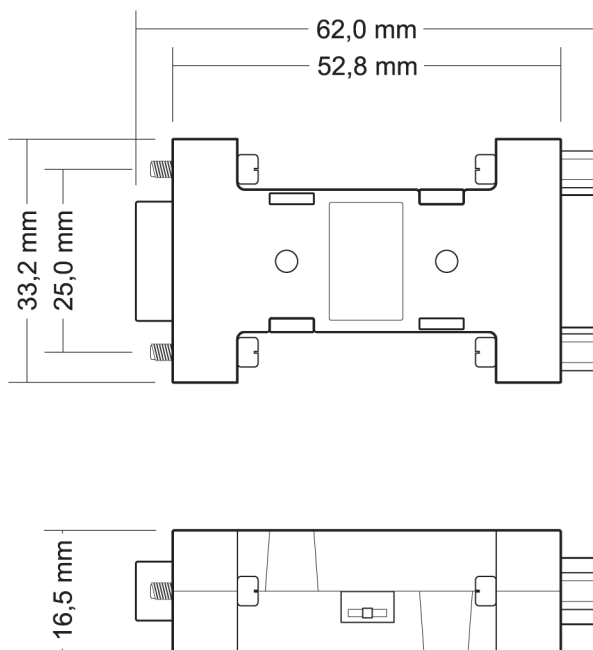


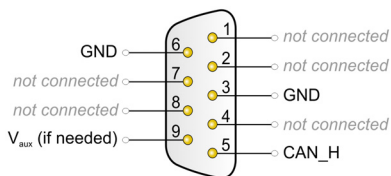
Figure 4: Top view and side view PCAN-AU5790.
The figure does not show the original size.

Appendix C Quick Reference

Procedure for connecting to CAN interface of the PCAN series:

1. On the CAN interface, enable the routing of the 5-Volt supply to pin 1 of the D-Sub connector (see documentation of the CAN interface).
2. Plug the PCAN-AU5790 with its D-Sub socket (High-speed CAN) onto the D-Sub plug of the CAN interface.
3. Only CAN interfaces with galvanic isolation ("opto-decoupled"): On the Single-wire CAN side of the PCAN-AU5790, connect an additional voltage supply V_{aux} .

Single-wire CAN Connector



$V_{aux} = 12\text{ V DC}$, e.g. car battery
(6 - 16 V possible, at least 12 V for wake-up mode)

Switch for Single-wire CAN Modes

| Switch position | Mode | Description |
|-----------------|------------|--|
| Middle | Normal | Up to 33.3 kbit/s, with waveshaping |
| Right | High-speed | Up to 83.3 kbit/s, without wave shaping |
| Left | Wake-up | Like normal mode, but with increased signal levels |

Status LEDs

| LED | Meaning |
|--------|--|
| Red | Power supply 5 V |
| Yellow | Reception/transmission of wake-up signals on the Single-wire CAN bus |