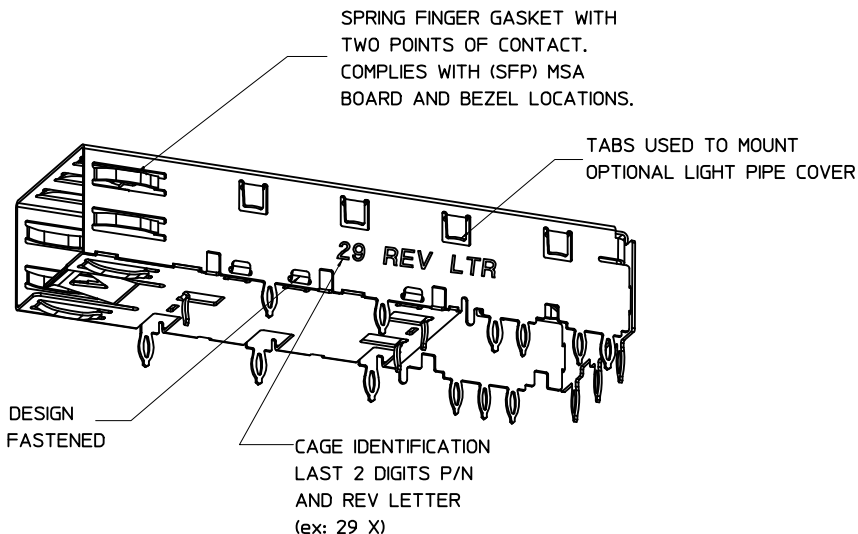
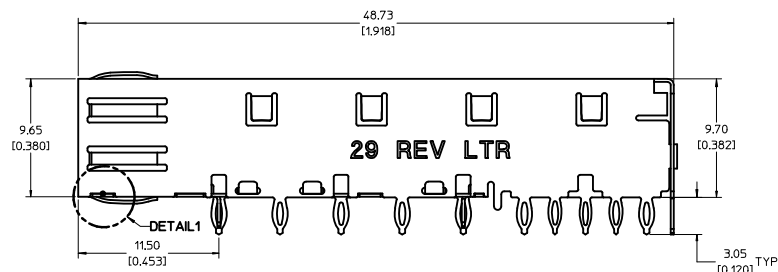




- NOTES:**
1. PRESS FIT LEGS, 0.120 INCHES LONG.
1.57 [0.062] MINIMUM PCB THICKNESS.
 2. THIS CAGE IS FOR SINGLE SIDED USE ONLY.
 3. CAN BE USED WITH THE FOLLOWING LIGHT PIPE PART NUMBERS:
747260001 - LIGHT PIPE FROM BACK TO TOP
(REFER TO DOCUMENT SD-74726-001)
747260002 - LIGHT PIPE FROM SIDE TO TOP
(REFER TO DOCUMENT SD-74726-002)
 4. MATERIAL: COPPER ALLOY
PLATING: PRE-PLATED WITH NICKEL
 5. THIS PART MEETS THE RESTRICTION OF HAZARDOUS SUBSTANCES IN
ELECTRICAL AND ELECTRONIC EQUIPMENT (ROHS) DIRECTIVE (2002/95/EC).
▲ LASER WELD SPOT WILL BE SLIGHT DISCOLORATION.

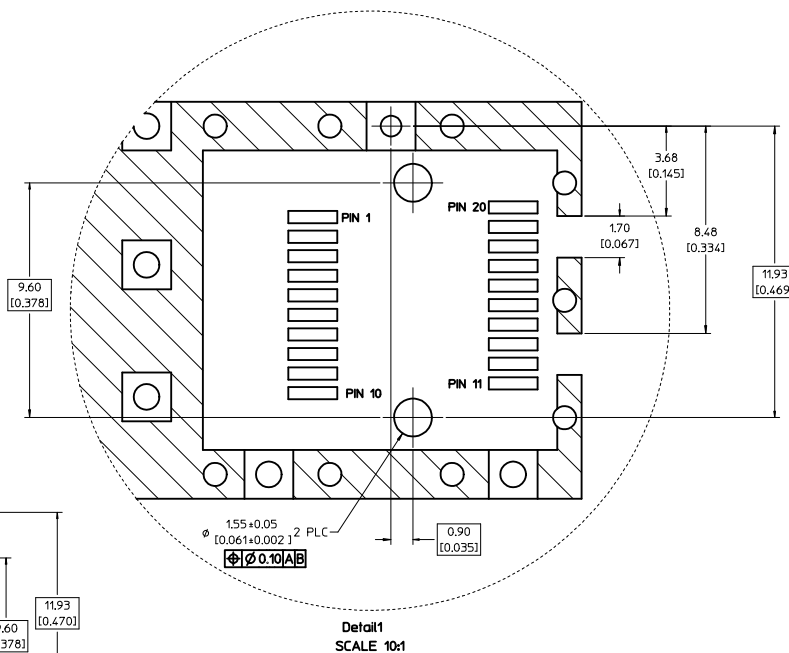
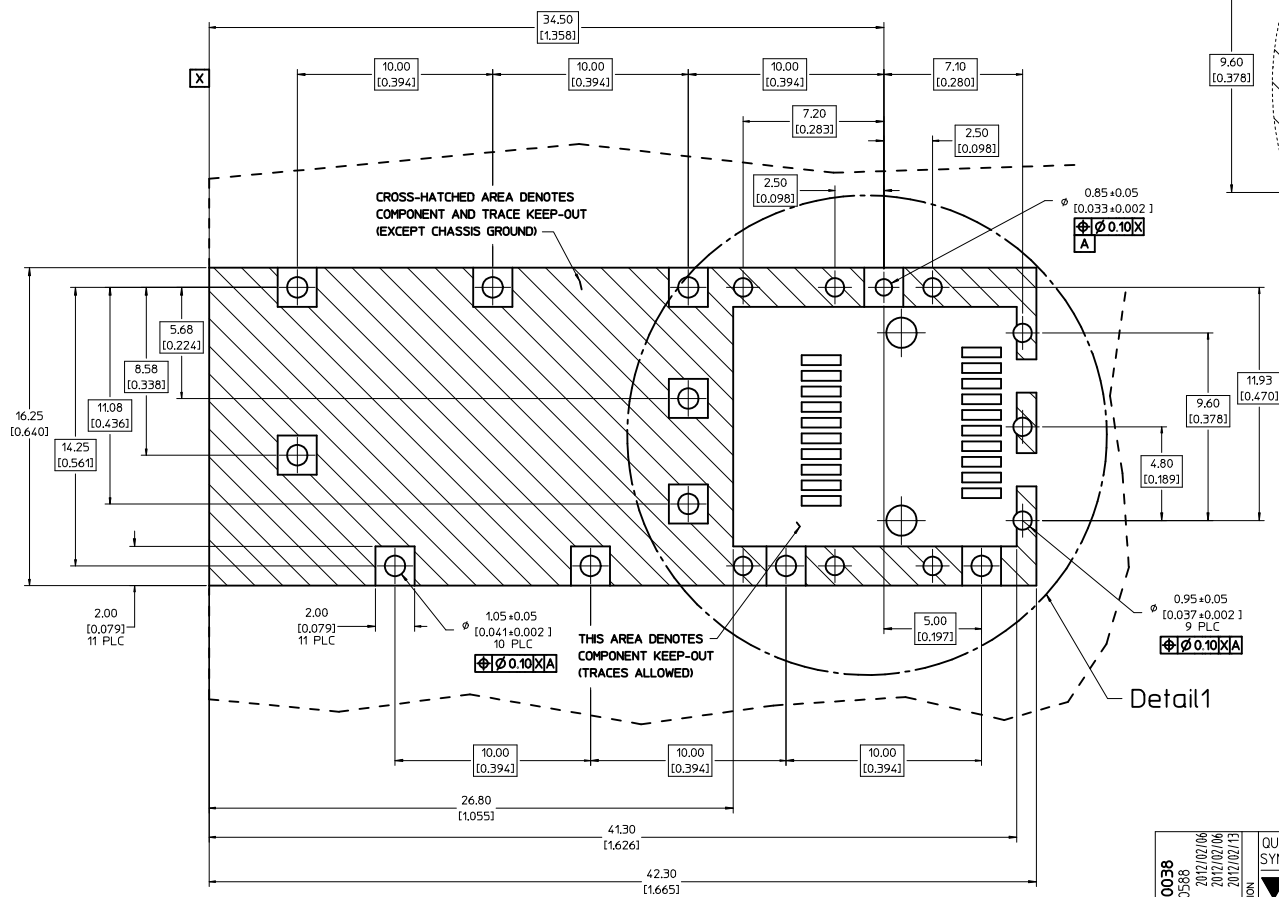


P/N	Description	Weld Qty
747370029	SFP 1x1 One Piece Cage w/ Press Fit (0.120" Legs) and w/ Cisco Latch	0
747370038	SFP 1x1 One Piece Cage w/ Press Fit (0.120" Legs), w/ Cisco Latch and w/ Welded Seam at Port Opening	1

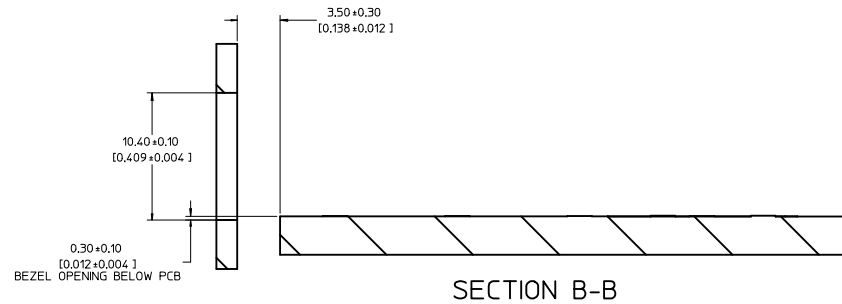
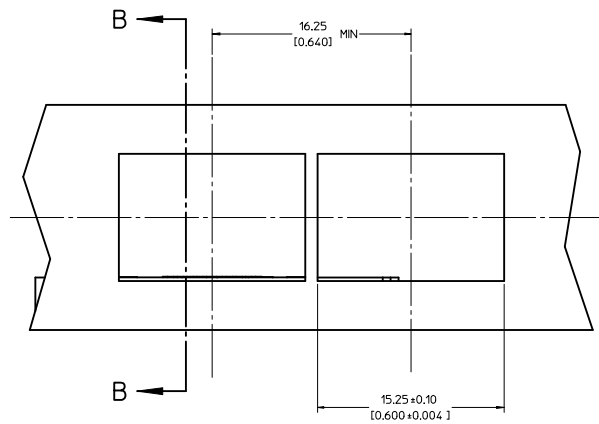
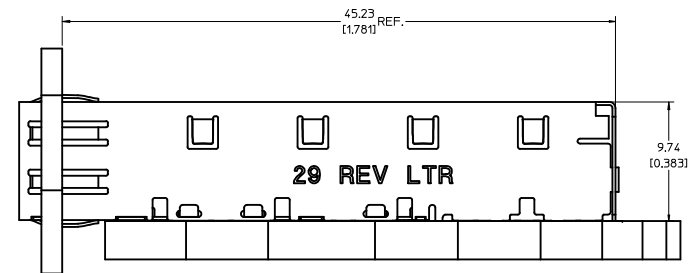
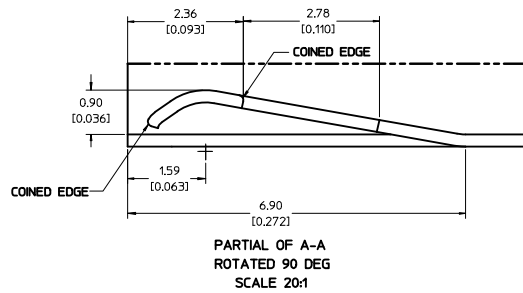


ADDED 747370038		DATE: 2012/07/06		QUALITY SYMBOLS		GENERAL TOLERANCES (UNLESS SPECIFIED)		DIMENSION STYLE		SCALE		DESIGN UNITS		THIRD ANGLE PROJECTION	
EC NO: CP502-0588		DRAWN BY: JIN		CHICKALOYO		2012/07/13		MM/IN		5:1		METRIC			
DESCRIPTION		▽=0		4 PLACES ± ---		±.0002		DRAWN BY		DATE		TITLE		SFP ONE PIECE CAGE	
		▽=0		3 PLACES ± ---		±.005		CHECKED BY		DATE				PRESS-FIT (0.120 LEGS)	
				2 PLACES ± 0.13		±.01		KLLLOYD		2012/07/06				W/ MODIFIED LATCH TANG	
				1 PLACE ± 0.25		± ---		APPROVED BY		DATE				MOLEX INCORPORATED	
				ANGULAR ± 1/2°				MATERIAL NO.		DOCUMENT NO.				SHEET NO.	
				DRAFT WHERE APPLICABLE MUST REMAIN WITHIN DIMENSIONS				SEE TABLE		SD-74737-0029				1 OF 4	
								SIZE		THIS DRAWING CONTAINS INFORMATION THAT IS PROPRIETARY TO MOLEX INCORPORATED AND SHOULD NOT BE USED WITHOUT WRITTEN PERMISSION					

1. PADS AND VIAS ARE CHASSIS GROUND.
2. HOLE LAYOUT SHOWN IS FOR SINGLE SIDED MOUNTING ONLY.
3. CONNECTOR PAD LAYOUT PER SFP MSA, WILL ACCOMMODATE MOLEX CONNECTOR SERIES 74441 OR EQUIVALENT.



ADDED 74707E0338 EC NO. CPG2012-0568 D DRAWING I DRAWING C CHCKD KLOYO APPR KLOYO 2012/02/06 2012/02/06 2012/02/13	QUALITY SYMBOLS ▽ ▽	DESCRIPTION	GENERAL TOLERANCES (UNLESS SPECIFIED)		DIMENSION STYLE MM/IN		SCALE 8:1	DESIGN UNITS METRIC	THIRD ANGLE PROJECTION					
			mm	INCH	DRAWN BY	DATE	TITLE	SFP ONE PIECE CAGE PRESS-FIT (0.120 LEGS) W/ MODIFIED LATCH TANG MOLEX INCORPORATED						
			4 PLACES ±.002	4 PLACES ±.002	CX	2007/10/15								
			3 PLACES ±.005	3 PLACES ±.005	CHECKED BY	DATE								
			2 PLACES ±.01	2 PLACES ±.01	KLLOYD	2012/02/06								
			1 PLACE ±0.25 ±	1 PLACE ±.01 ±	APPROVED BY	DATE								
					ANGULAR ±1/2°		MATERIAL NO.		DOCUMENT NO.	SHEET NO.				
					DRAFT WHERE APPLICABLE MUST REMAIN WITHIN DIMENSIONS		SEE SHEET 1		SD-74737-0029	2 OF 4				
							SIZE D		THIS DRAWING CONTAINS INFORMATION THAT IS PROPRIETARY TO MOLEX INCORPORATED AND SHOULD NOT BE USED WITHOUT WRITTEN PERMISSION					



ADDED 747370038 EC NO: CPG2012-0588 DRAWN BY: CHYKOLLOYD CHECKED BY: APPR:KLLOYD DATE: 2012/02/06 DATE: 2012/02/13		QUALITY SYMBOLS ▽=0 ▽=0		GENERAL TOLERANCES (UNLESS SPECIFIED) mm INCH 4 PLACES ± --- ±.0002 3 PLACES ± --- ±.005 2 PLACES ± 0.13 ±.01 1 PLACE ± 0.25 ± --- ANGULAR ± 1/2°		DIMENSION STYLE MM/IN		SCALE 5:1		DESIGN UNITS METRIC		THIRD ANGLE PROJECTION	
DRAWN BY: CCOX CHECKED BY: KLLOYD APPROVED BY: DATE: 2007/10/15 DATE: 2012/02/06		TITLE SFP ONE PIECE CAGE PRESS-FIT (0.120 LEGS) W/ MODIFIED LATCH TANG		MATERIAL NO. SEE SHEET 1		DOCUMENT NO. SD-74737-0029		SHEET NO. 3 OF 4		MOLEX INCORPORATED		THIS DRAWING CONTAINS INFORMATION THAT IS PROPRIETARY TO MOLEX INCORPORATED AND SHOULD NOT BE USED WITHOUT WRITTEN PERMISSION	

DATE	REV	CHANGES
2007/10/15	A	INITIAL RELEASE
2007/11/28	B	[1] ADDED COIN TO LEADING EDGE OF LATCH TANG AND LATCH TANG HOLE, [2] ADDED CAGE REV LETTER NOTE ON SHT1.
2007/12/27	C1	[1] UPDATED VIEWS TO REFLECT CHANGE TO CAGE TANG RADIUS, *****C1 REVISION WAS NOT RELEASED IN WORKMANAGER OR MIDAS*****
2008/03/18	C	[1] UPDATED FOLLOWING DIM'S DUE TO MODIFICATIONS TO TANG: ON SHT1 - CHG'D E12 FROM 8.50 TO 8.20, ON SHT3 - CHG'D L18 FROM 2.33 TO 2.36, K19 FROM 0.65 TO 0.90, & K18 FROM 1.43 TO 1.59.
2012/02/06	D	[1] ADDED 747370038 . ADDED DETAILED VIEW TO SHOW WELD AND TABLE LIST ON SHT 1.

ADDED 747370038
EC NO: CPG2012-0588
D
DRAWN:FOIAN
CHKD:KLLOYD
APPR:KLLOYD

2012/02/06
2012/02/06
2012/02/13

DESCRIPTION
REV

QUALITY SYMBOLS
=0
=0

GENERAL TOLERANCES (UNLESS SPECIFIED)
mmINCH
4 PLACES ± --- ±.0002
3 PLACES ± --- ±.005
2 PLACES ± 0.13 ±.01
1 PLACE ± 0.25 ± ---
ANGULAR ±1/2°
DRAFT WHERE APPLICABLE
MUST REMAIN WITHIN DIMENSIONS

DIMENSION STYLE
MM/IN

DRAWN BY
CCOX

CHECKED BY
KLLOYD

APPROVED BY

DATE
2007/10/15
2012/02/06

MATERIAL NO.
SEE SHEET 1

SIZE
D

SCALE
1:1

DESIGN UNITS
METRIC

THIRD ANGLE PROJECTION

TITLE
SFP ONE PIECE CAGE
PRESS-FIT (0.120 LEGS)
W/ MODIFIED LATCH TANG

DOCUMENT NO.
SD-74737-0029

SHEET NO.
4 OF 4

MOLEX INCORPORATED

THIS DRAWING CONTAINS INFORMATION THAT IS PROPRIETARY TO MOLEX
INCORPORATED AND SHOULD NOT BE USED WITHOUT WRITTEN PERMISSION

19181716151413121110987654321

19181716151413121110987654321