

Soldering type female connector for cables

PCS-E()FS

For Cables

Soldering

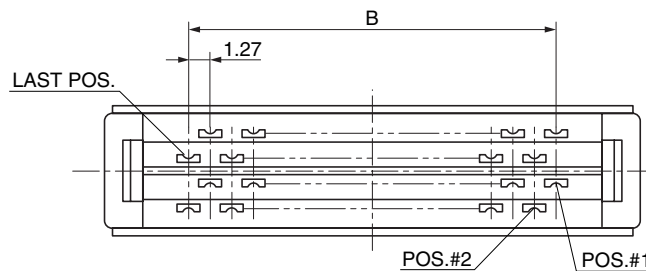
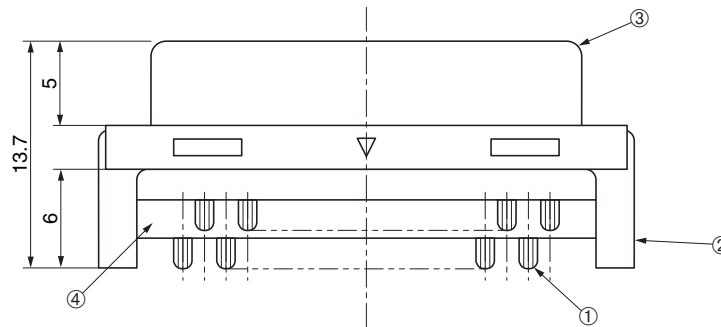
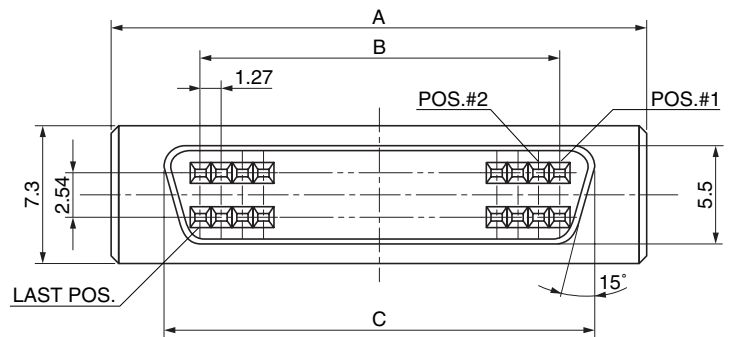


● Configuration of product Part No.

PCS-E () FS

① ② ③

- ① Series name
 - ② No. of contacts: 20, 28, 36, 50 or 68
 - ③ Type of contact: Soldering type, female
- Cable sizes for reference purposes
FS: AWG#20 MAX.



● Components

①	Contacts
②	Insulator
③	Shell
④	Spacer

● Dimensions

Part No.	A	B	C
PCS-E20FS	21.65	11.43	15.4
PCS-E28FS	26.7	16.51	20.48
PCS-E36FS	31.8	21.59	25.56
PCS-E50FS	40.7	30.48	34.45
PCS-E68FS	52.1	41.91	45.88

Mating connectors: PCS-E series of DIP type male connectors for PCBs

PCS-E series of IDC type male connectors for panels

Others

Wire
wrapping

Crimping

Soldering

IDC

Press-in

SMT

DIP