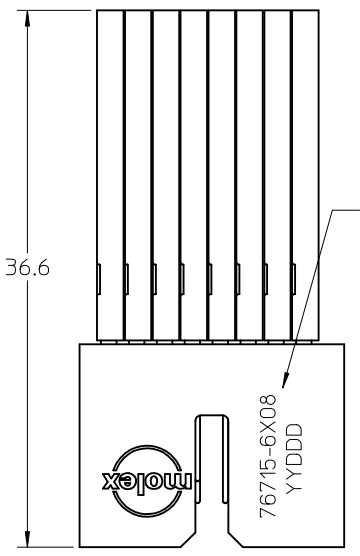
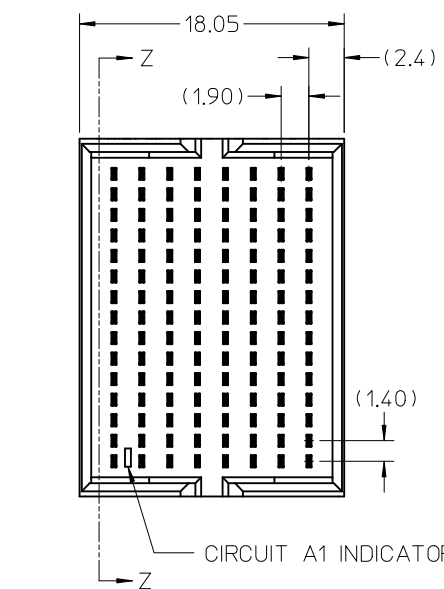


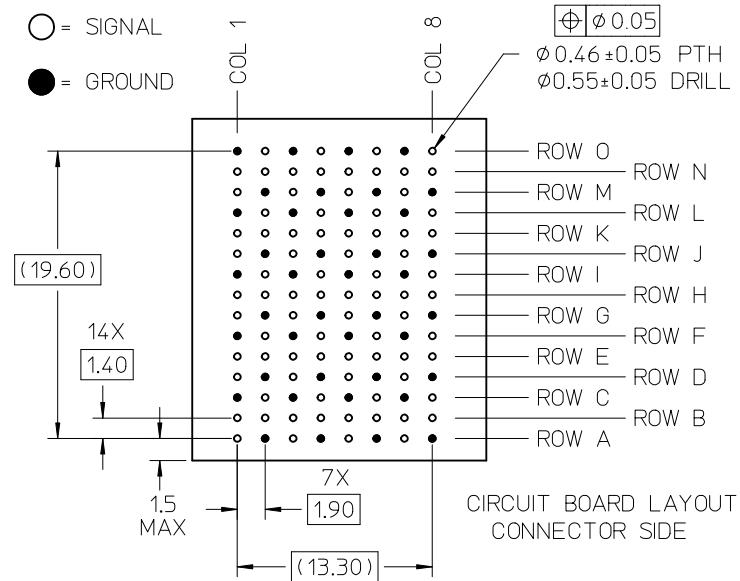
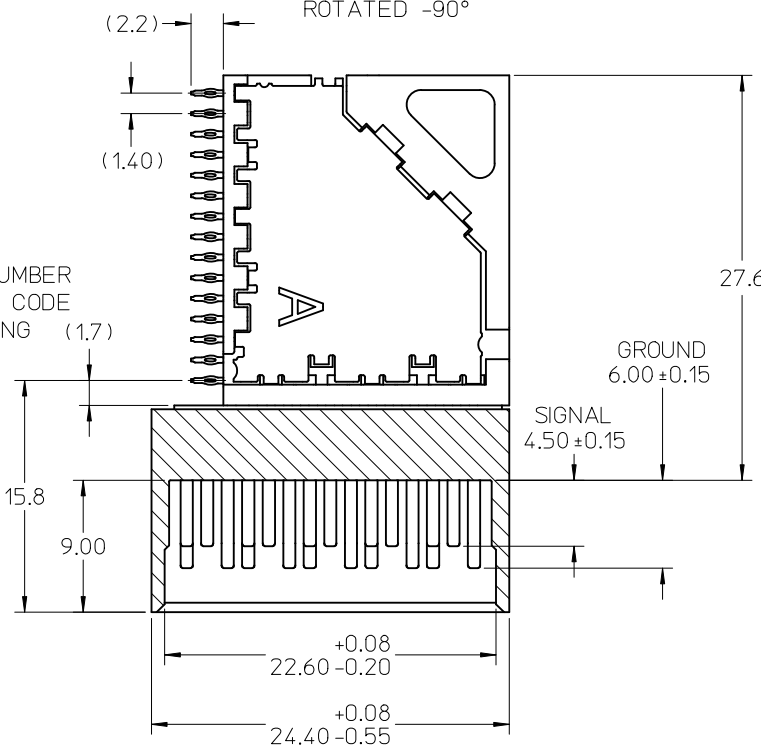
| | |
|-------------|--------------|
| 10 | 9 |
| PART NUMBER | TAIL PLATING |
| 76715-6008 | MATTE TIN |
| 76715-6108 | TIN/LEAD |



PART NUMBER & DATE CODE MARKING (1.7)



SECTION Z-Z
ROTATED -90°



NOTES:

1. MATERIALS: CONTACTS - COPPER ALLOY, HOUSING - LIQUID CRYSTAL POLYMER (LCP), UL 94V-0, BLACK
2. FINISHES: SELECTIVE GOLD (Au) IN CONTACT AREA, SELECTIVE MATTE TIN (Sn) OR TIN/LEAD (Sn/Pb) IN TAIL AREA, NICKEL (Ni) OVERALL.
3. PARTS PACKAGED PER PK-70873-0064.
4. THESE PARTS CONFORM TO MOLEX PRODUCT SPECIFICATION PS-76706-999.
5. THESE PARTS CONFORM TO MOLEX COSMETIC SPECIFICATION PS-45499-002 CLASS B.
6. MINIMUM CIRCUIT BOARD THICKNESS: 1.4

| | | | | | | | | | | | |
|----------------------------------------------------------------------------------------------------------------------------|-------------------------------|---------------------------------------|--|-------------------------------------------------------------------------------------------------------------------------------|--|--------------|------------------------|------------------------|--|--|--|
| REVISED (MINOR) EC NO: UCP2011-0796 DRAWN: JBINGHAM 2010/09/20 CHKD: JLAURX 2010/09/20 APPR: JLAURX 2010/09/21 | QUALITY SYMBOLS ▽=0 ▽=0 | GENERAL TOLERANCES (UNLESS SPECIFIED) | | DIMENSION STYLE MM ONLY | | SCALE 3:1 | DESIGN UNITS METRIC | THIRD ANGLE PROJECTION | | | |
| | | | | | | | | | | | |
| | | | | | | | | | | | |
| | | | | | | | | | | | |
| DRAFT WHERE APPLICABLE MUST REMAIN WITHIN DIMENSIONS | | SEE CHART | | MATERIAL NO. | | DOCUMENT NO. | | SHEET NO. | | | |
| A1 | | B | | THIS DRAWING CONTAINS INFORMATION THAT IS PROPRIETARY TO MOLEX INCORPORATED AND SHOULD NOT BE USED WITHOUT WRITTEN PERMISSION | | SD-76715-608 | | 1 OF 1 | | | |