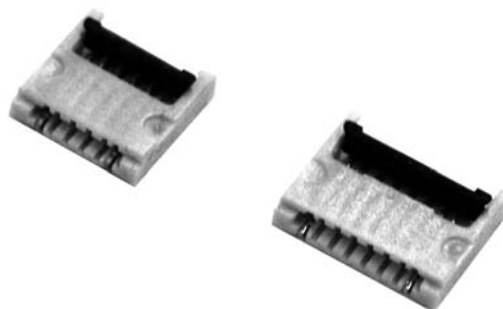


# 0.5mmPitch FPC/FFC Connectors

## FF14A Series

[Cable Lock Type]



### Application

Mobile Phones, Digital Cameras, PDA, Notebook Computers, DVD drive, LCD Connection, Plasma Display, MP-3 Player, Other Hand-held Devices.

### Features

1. Both of upper and lower contact in one connector.
2. Space saving design with 0.9mm high and miniaturized the connector occupies.
3. Rotation back slider with cam  
Reliable electrical connection and easy FPC insertion.
4. Low insertion force  
Protects to be shifted after FPC insertion.
5. Available to space saving slider or easy operation slider
6. FPC hold mechanism protect to come out of connector by withdrawal force.

### Specifications

- Rated voltage : 50V AC(r.m.s.)
- Rated current : 0.5A / Contact
- Dielectric withstanding voltage : 200V AC(r.m.s.) for 1 minute
- Insulation resistance : 100M $\Omega$  min. at 500V DC
- Contact resistance : 50m $\Omega$  max.

### Material / Finish

Contact : Copper Alloy / Gold over Nickel Plating  
Housing : LCP resin (UL94V-0) / Ivory  
Slider : PPS resin (UL94V-0) / Black

# Short Slider Type

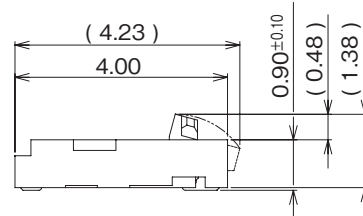
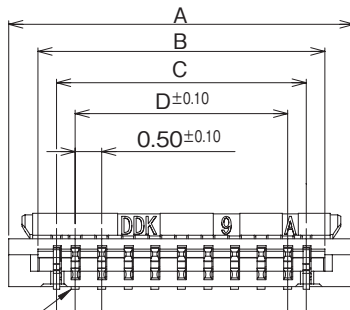
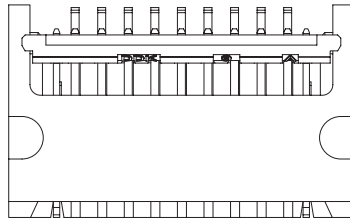


Unit:mm

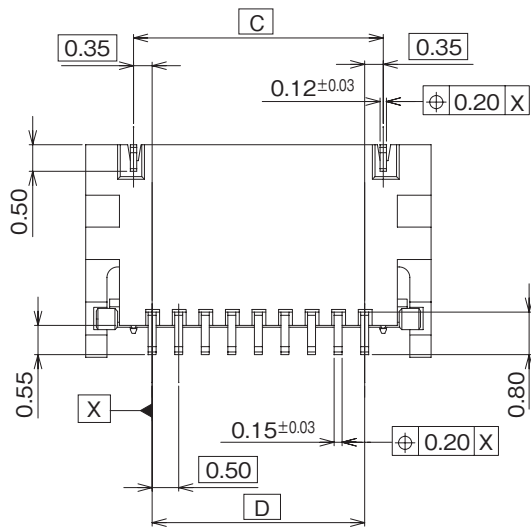
FF14A-A-R1A

Number of contact

Contact Finish  
1 : Gold over Nickel plating



Contact NO.1



P / N	Number of contact	A	B	C	D
FF14A- 4A-R1 <input type="checkbox"/> A	4	4.00	2.85	2.20	1.50
FF14A- 5A-R1 <input type="checkbox"/> A	5	4.50	3.35	2.70	2.00
FF14A- 6A-R1 <input type="checkbox"/> A	6	5.00	3.85	3.20	2.50

# Long Slider Type

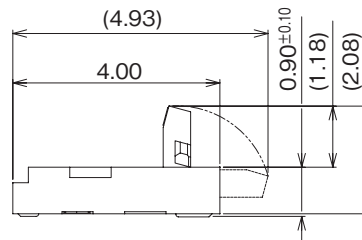
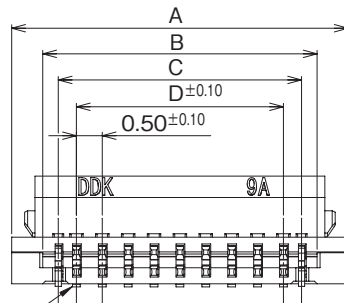
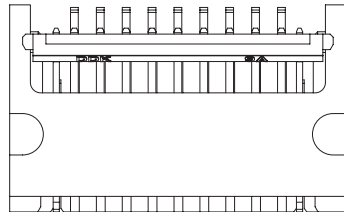


Unit:mm

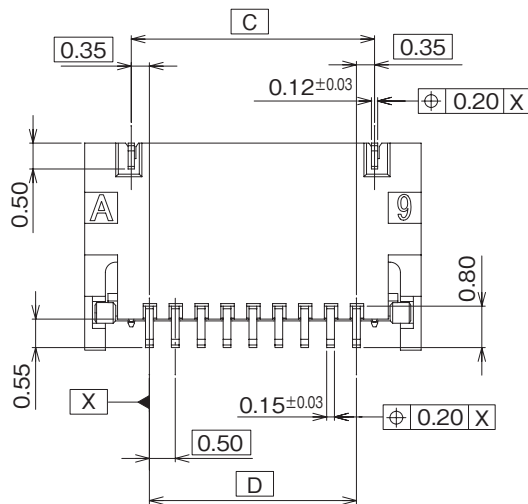
FF14A-□□A-R1□B

Number of contact

Contact Finish  
1 : Gold over Nickel plating



Contact No.1



P / N	Number of contact	A	B	C	D
FF14A- 4A-R1□B	4	4.00	2.85	2.20	1.50

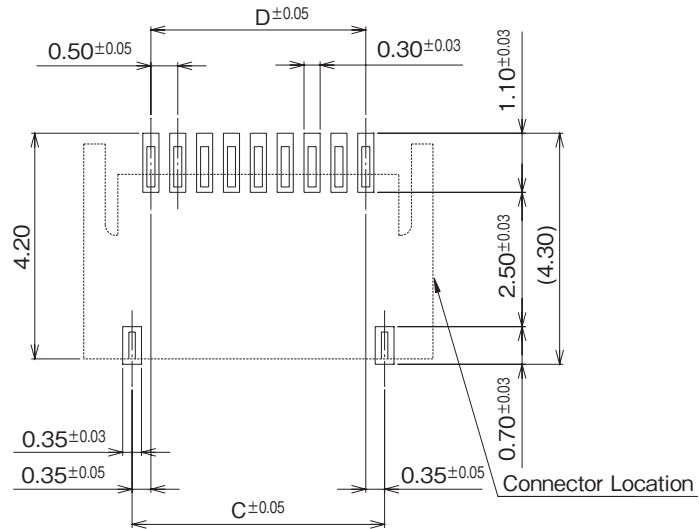
# FF14A Connector Mounting Dimensions



## ■ PCB Mounting Dimensions

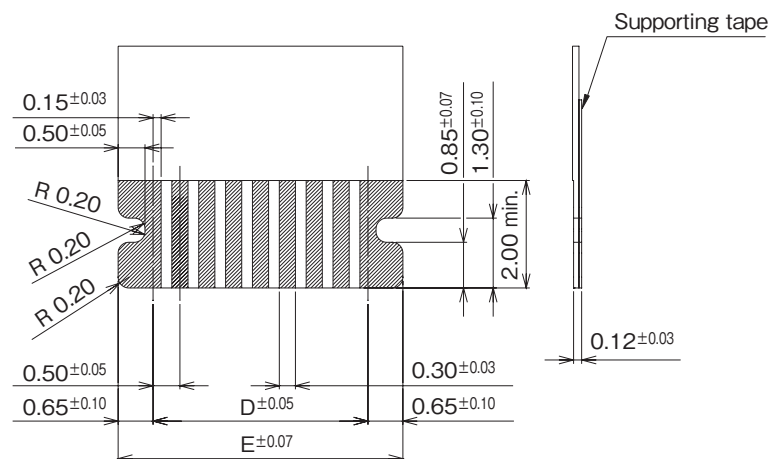
Unit:mm

FF14A-□□A-R1□□



## ■ FPC Dimensions

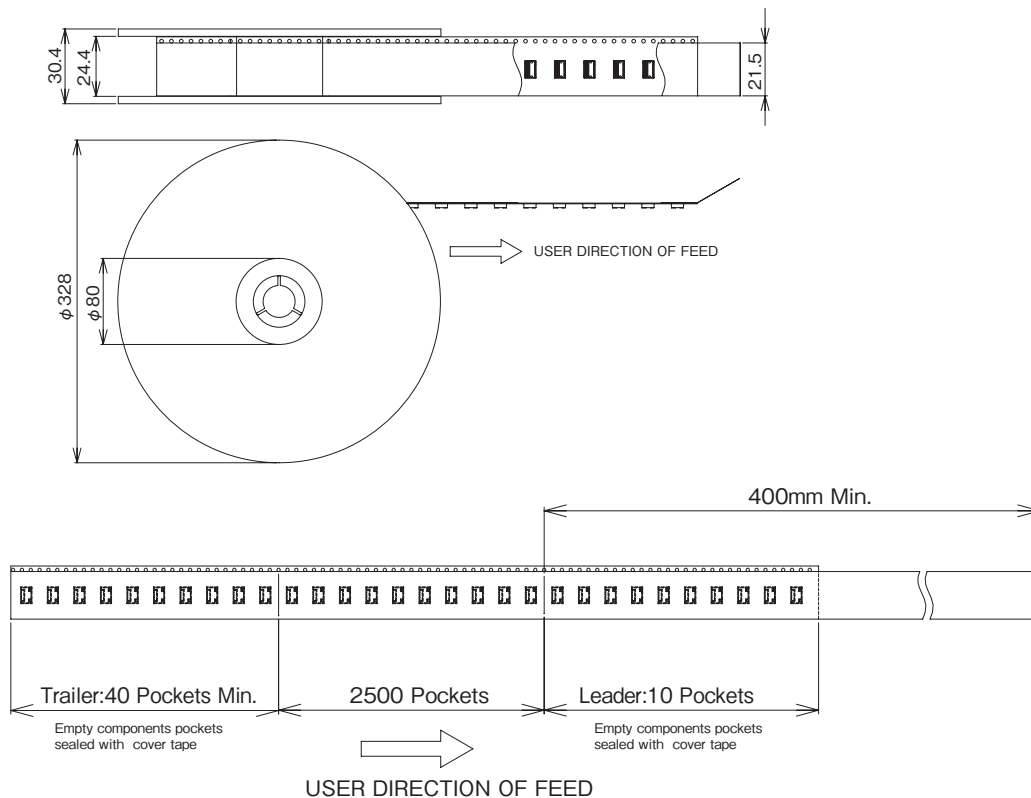
FF14A-□□A-R1□□



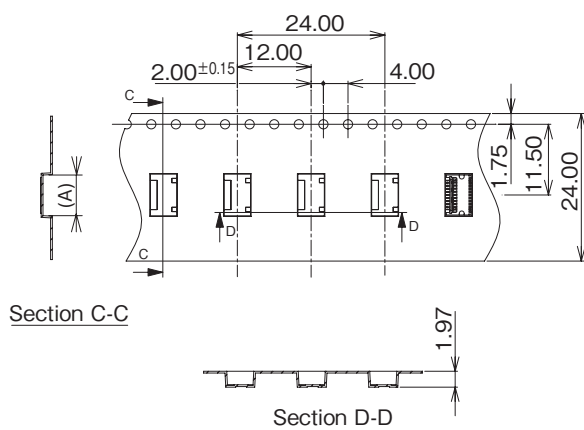
# Packing Specification (FF14A-□□A-R1□A)

## ■Reel Dimensions

Unit:mm



## ■Emboss-Tape Dimensions



P / N	Number of contact	A
FF14A-4A-R1□A	4	4.3
FF14A-5A-R1□A	5	4.8
FF14A-6A-R1□A	6	5.3

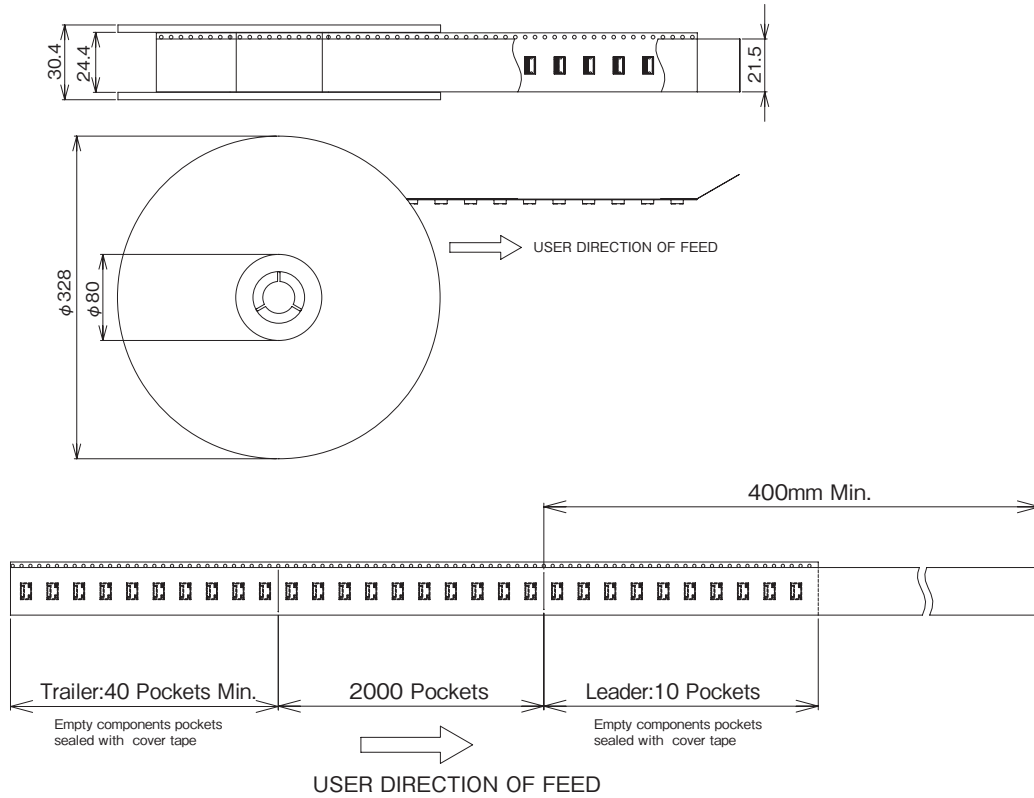
■Packing Quantity : 2,500pcs / Reel

# Packing Specification (FF14A-□□A-R1□B)

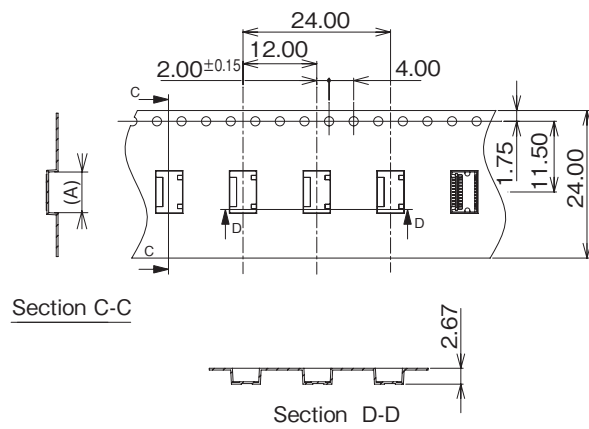


## ■ Reel Dimensions

Unit:mm



## ■ Emboss-Tape Dimensions

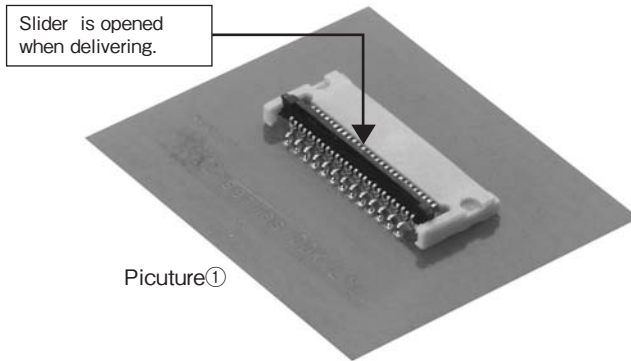


P / N	Number of contact	A
FF14A-4A-R1□B	4	4.3

■ Packing Quantity : 2,500pcs / Reel

## 1. Connector mounting method

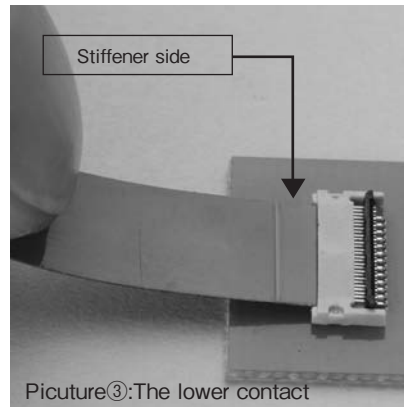
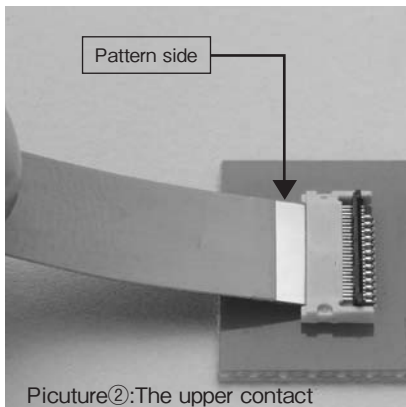
Slider is open when delivering for your easy operation.  
Please do not close the slider before FPC insertion in order to avoid the excess force to contacts. ( picture: ①)



## 2. FPC insertion procedure

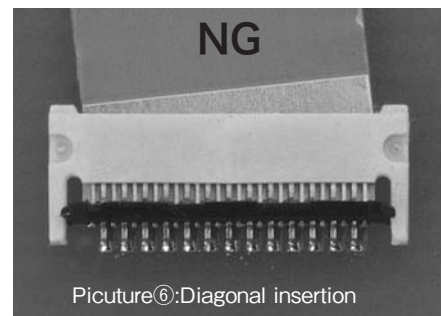
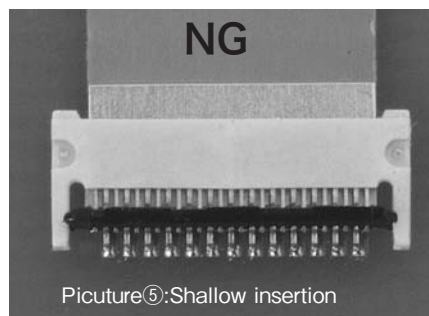
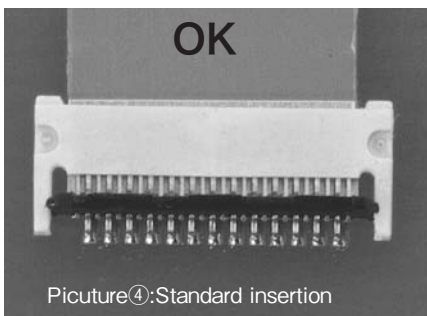
When you use upper contact, please insert FPC up to pattern side into connector ( picture :②).

When you use lower contact, please insert FPC up to the stiffener side into connector ( picture :③).



### 3-1. Checking point for upper contact

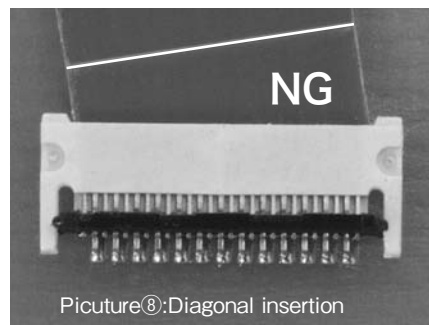
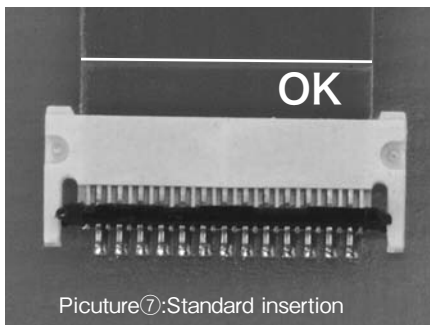
Diagonal insertion and shallow insertion can be prevented by watching both of connector housing upperline and FPC pattern borderline. ( picture: ④, ⑤, ⑥)



## 3-2. Checking point for lower contact

Diagonal insertion and shallow insertion can be prevented by watching both of connector housing upper line and FPC stiffener borderline. ( picture: ⑦, ⑧ )

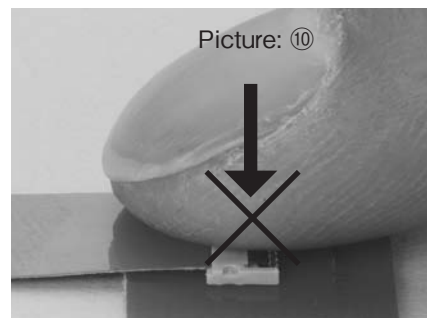
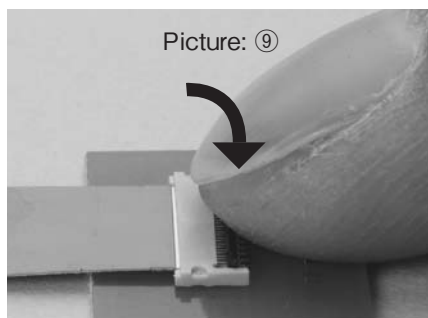
We recommend to mark the straight line on stiffener side at the same location as the pattern side borderline. (Refer to: 3-1)



## 4. Lock method

Please rotate down the slider until firmly closed. (Picture: ⑨ )

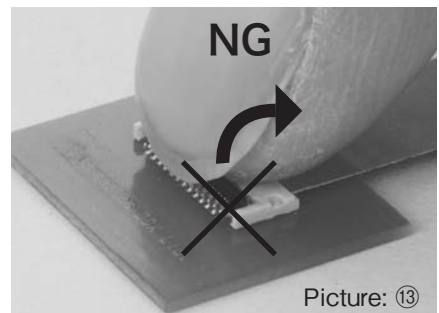
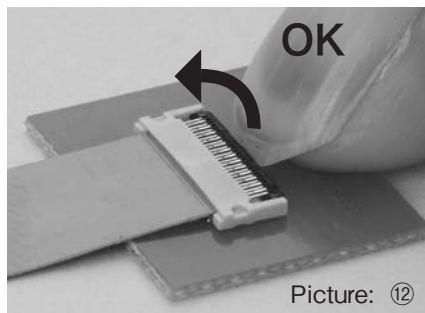
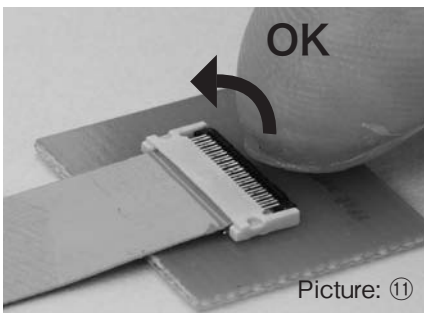
It is critical if you put extra power on the Housing. (Picture: ⑩ )



## 5. FPC extraction method

Please lift up the slider to the arrow direction. (Picture: ⑪ , ⑫ )

Be careful it is critical if you put extra power on the Housing. (Picture: ⑬ )

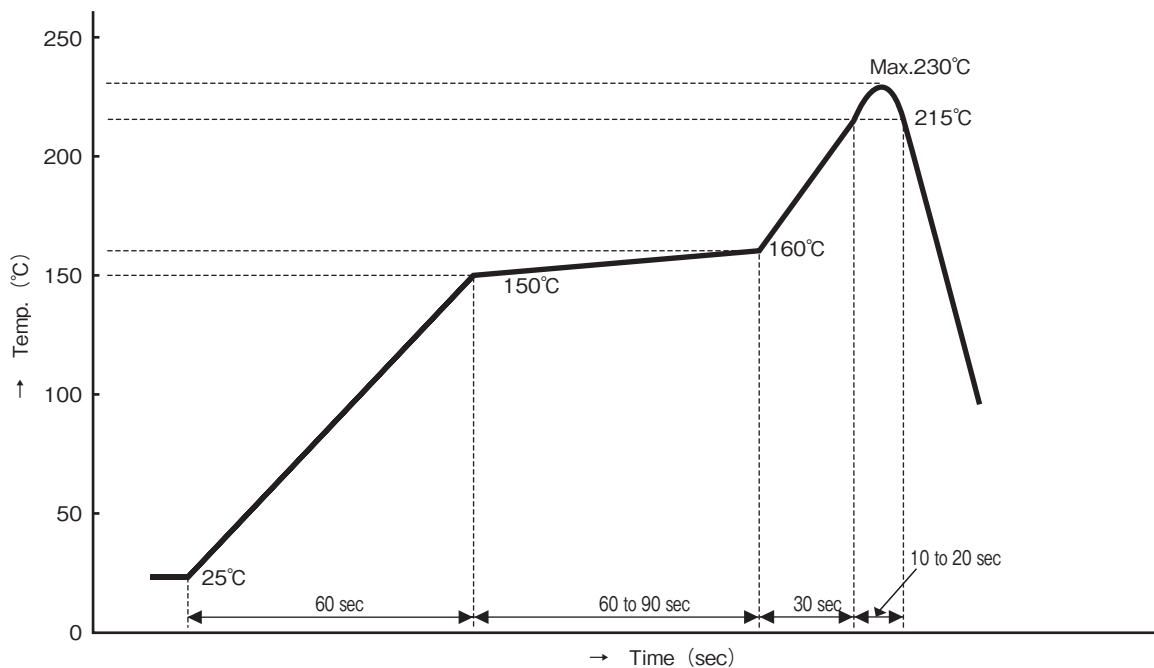




# Recommended Temperature Profiles

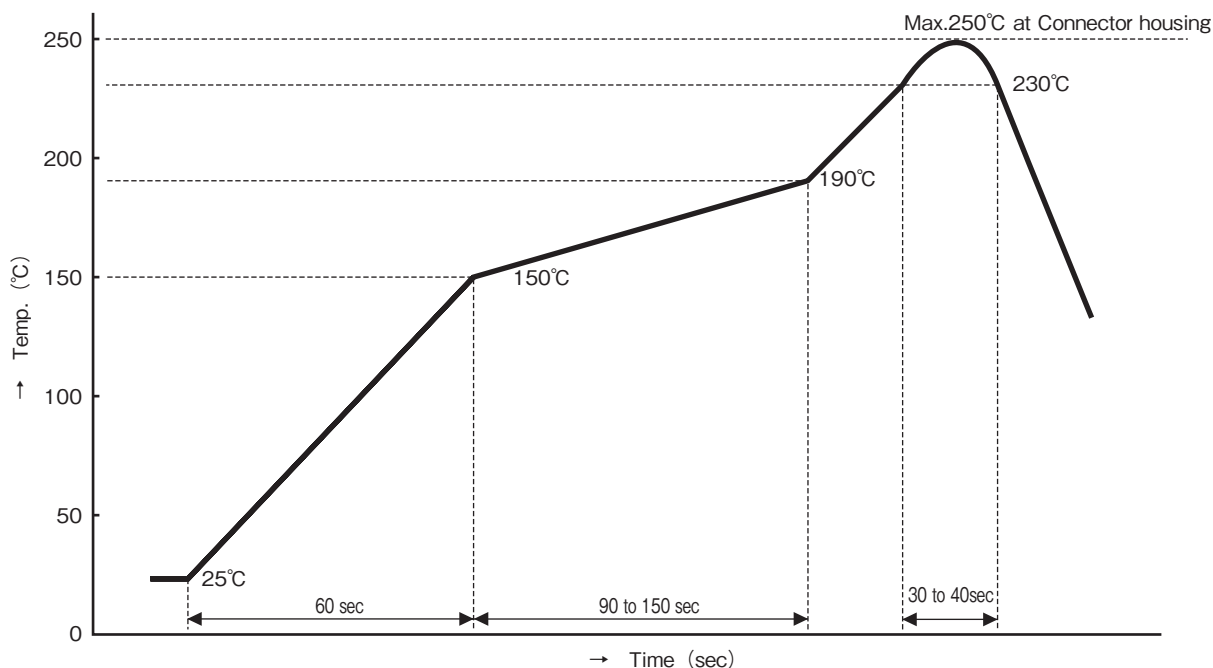


## ■ For Sn-Pb soldering



1. Temperature measurement position : Connector terminals.
2. Solder paste : Sn63/Pb37
3. This temperature profile is reference and may change by type and amount of solder, flux, etc. Therefore, this is not to guarantee soldering.

## ■ For lead-free soldering



1. Temperature measurement position : Connector terminals.  
However, the temperature on the surface of the housing is 250°C max.
2. Solder paste : Sn96.5/Ag3.0/Cu0.5
3. This temperature profile is reference and may change by type and amount of solder, flux, etc. Therefore, this is not to guarantee soldering.