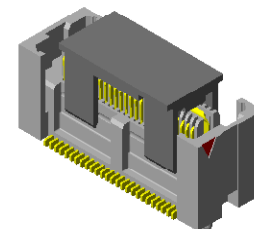


REVISION A

REVISION

NOTES:

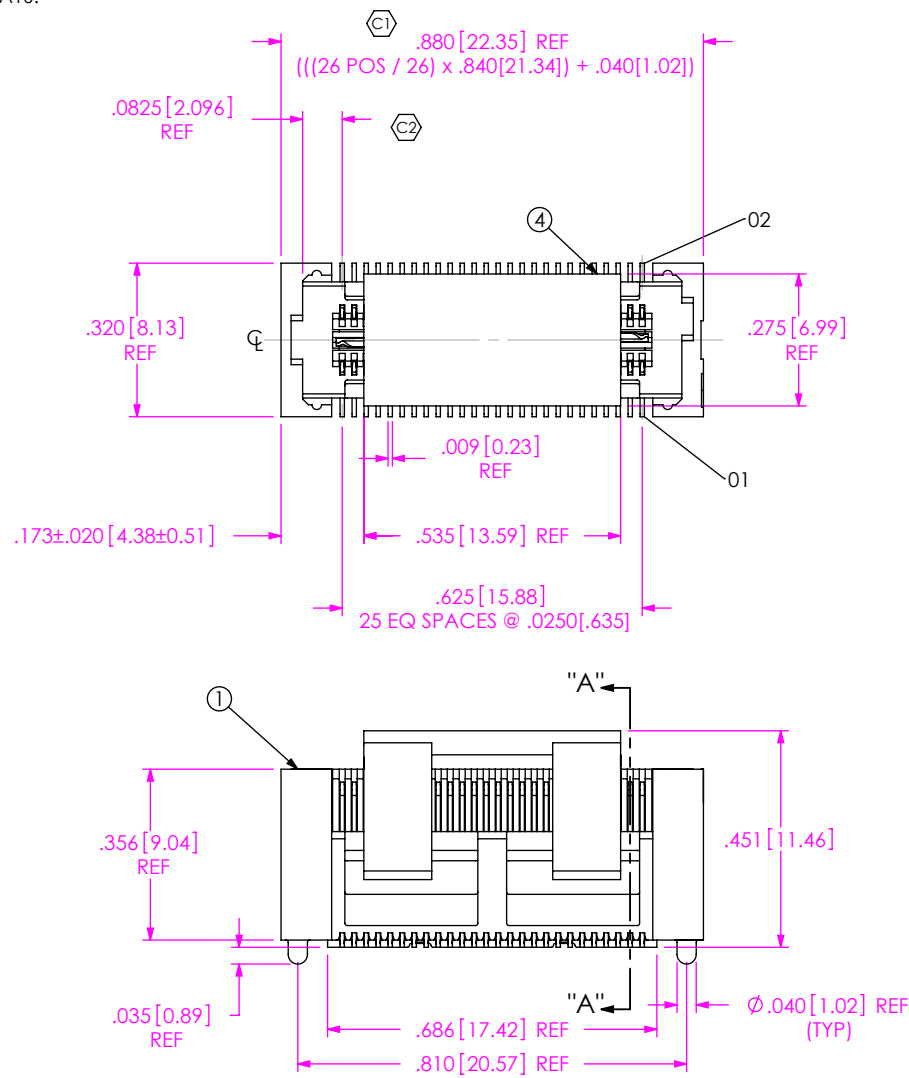
1. NOT AVAILABLE AS STANDARD.
2. Ⓢ REPRESENTS A CRITICAL DIMENSION.
3. BURR ALLOWANCE: .0015[0.038] MAX.
4. MINIMUM PUSHOUT FORCE: SIGNAL: .5 LB, GROUND: 1 LB.
5. MAX VARIANCE OF .002[0.05].
6. DIMENSION APPLIES TO CONTACTS & GROUND PLANE.
7. GROUND PLANE PRESS HEIGHT MUST BE .003[0.08] LESS THAN THE MAX HEIGHT OR .001[0.03] GREATER THAN THE MINIMUM HEIGHT OF THE CONTACT.
8. PARTS TO BE PACKAGED IN TRAYS.



0	CW	C FAITH
12/13/2006	ECN-68798	
ISSUE FOR REVIEW		
1	DE	C FAITH
2/14/2007	ECN-71504	
CHG FROM 3 BANKS TO 1 BANK		
2	CW	TALE RIGMEL
3/21/2007	ECN-73463	
BOM ITEM #1, CHG FROM QFSS-26-06-25-D-01 TO QFSS-26-06-25-D-01-A.		
3	CW	C FAITH
4/12/2007	ECN-74554	
SHEET 2, ADD FOOTPRINT LAYOUT		
A	MG	K BRATCHER
1/29/2008	ECN-85514	
RELEASE FOR PRODUCTION; CHANGE ITEM 5 FROM TRAY- QFX001-PR-01-AP-T TO TY-QFS012- 026-6.25.		

ACCEPTANCE OF DRAWING  
 ACCEPTED WITH DEVIATIONS LISTED

DATE: \_\_\_\_\_  
 COMPANY: \_\_\_\_\_  
 CUSTOMER SIGNATURE \_\_\_\_\_  
 PRINTED NAME \_\_\_\_\_  
 PHONE No: \_\_\_\_\_  
 FAX No: \_\_\_\_\_



ITEM NO.	PART NUMBER	QUANTITY	MATERIAL
1	QFSS-26-06.25-D-01-A	1.0000	VECTRA E130i, COLOR: BLACK
2	C-223-06.25-S	52.000	PHOS BRONZE, 521 EXTRA SPRING TEMPER
3	T-1G28-06.25-L	1.0000	PHOS BRONZE, 510 FULL HARD TEMPER
4	PPP-51	1.0000	VECTRA E130, COLOR: BLACK
5	<b>A</b> TY-QFS012-026-6.25	1.0000	BLACK HIPS

UNLESS OTHERWISE SPECIFIED, DIMENSIONS ARE IN INCHES. TOLERANCES ARE:  
 DECIMALS ANGLES  
 .XX:  $\pm .01 [3]$  2°  
 .XXX:  $\pm .005 [13]$   
 .XXXX:  $\pm .0020 [051]$

**PROPRIETARY NOTE**  
 THIS DOCUMENT CONTAINS INFORMATION CONFIDENTIAL AND PROPRIETARY TO SAMTEC, INC. AND SHALL NOT BE REPRODUCED OR TRANSFERRED TO OTHER DOCUMENTS OR DISCLOSED TO OTHERS OR USED FOR ANY PURPOSE OTHER THAN THAT WHICH IT WAS OBTAINED WITHOUT THE EXPRESSED WRITTEN CONSENT OF SAMTEC, INC.

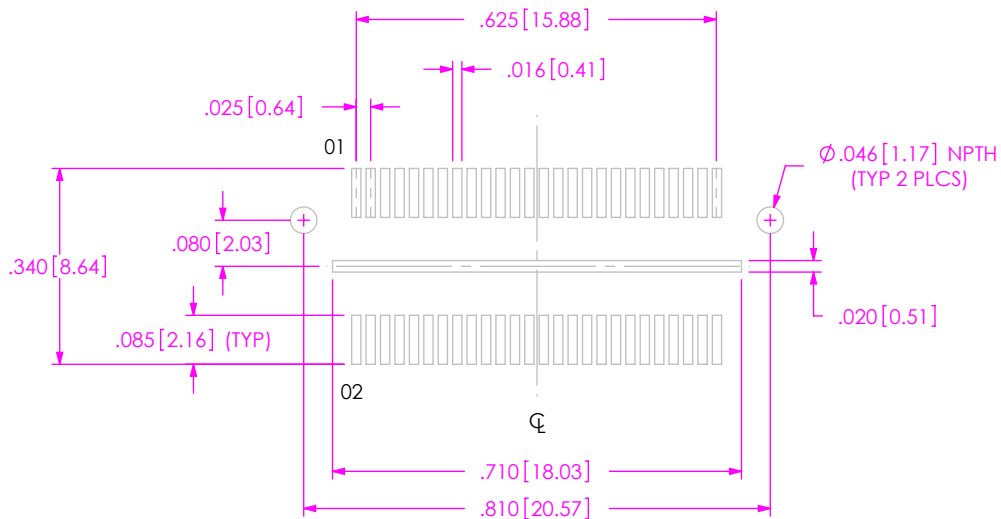


520 PARK EAST BLVD., NEW ALBANY, IN 47150  
 PHONE: 812-944-6733 FAX: 812-948-5047  
 e-Mail: info@SAMTEC.com code: 55322

DO NOT SCALE DRAWING SHEET SCALE: 2.5:1  
 PLATING:  
 CONTACT AREA: .000030 GOLD OVER .000050 NICKEL  
 REMAINDER: .000200 REF TIN OVER .000050 NICKEL  
 F:\DWG\MISC\MKTG\ASP-129646-01-MKT.SLDDRW

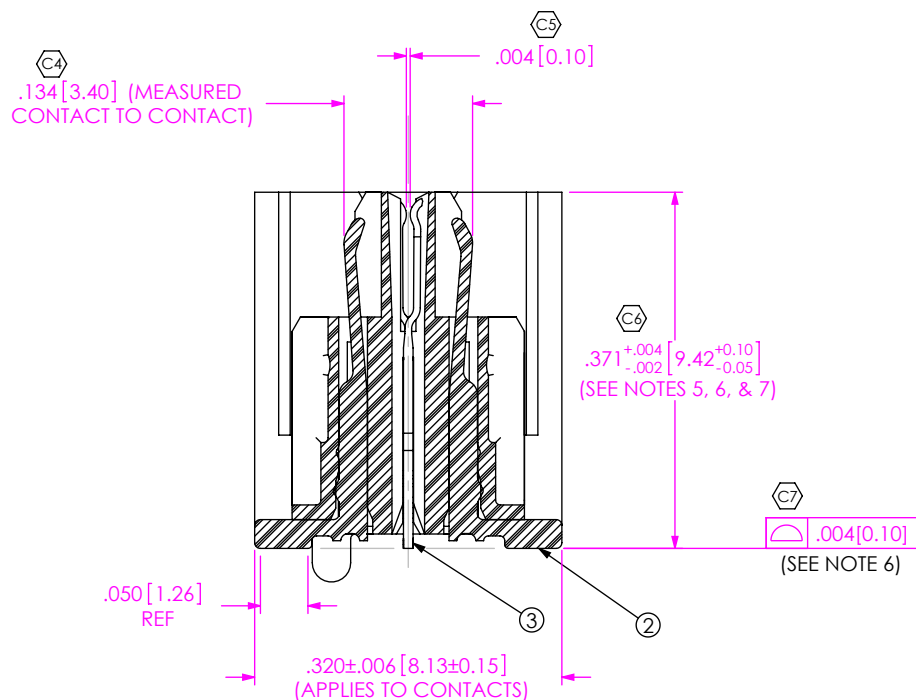
DESCRIPTION: ELEVATED QFS  
 DWG. NO. ASP-129646-01  
 BY: CLAY W 12/13/2006 SHEET 1 OF 2

RECOMMENDED PCB LAYOUT



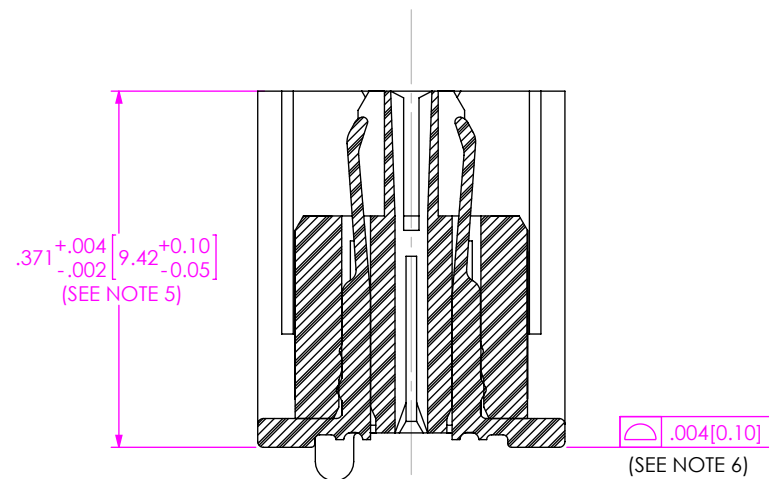
(ALL DIMENSIONS ARE SYMMETRIC ABOUT THE CENTERLINE)

IN-PROCESS



SECTION "A"- "A"

ITEM 4 NOT SHOWN FOR CLARITY



VIEW



520 PARK EAST BLVD, NEW ALBANY, IN 47150  
 PHONE: 812-944-6733 FAX: 812-948-5047  
 e-Mail: info@SAMTEC.com code: 55322

PROPRIETARY NOTE

THIS DOCUMENT CONTAINS INFORMATION CONFIDENTIAL AND PROPRIETARY TO SAMTEC, INC. AND SHALL NOT BE REPRODUCED OR TRANSFERRED TO OTHER DOCUMENTS OR DISCLOSED TO OTHERS OR USED FOR ANY PURPOSE OTHER THAN THAT WHICH IT WAS OBTAINED WITHOUT THE EXPRESSED WRITTEN CONSENT OF SAMTEC, INC.

SHEET SCALE: 5:1

DESCRIPTION:

ELEVATED QFS

DWG. NO.

ASP-129646-01

BY: CLAY W 12/13/2006 SHEET 2 OF 2