

REVISION

0	TW	T LOZIER
5/14/2007	ECN-75870	
ISSUE FOR REVIEW.		

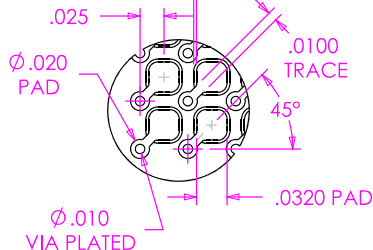
NOT RELEASED FOR PRODUCTION

USE FOR QUOTING, PRELIMINARY DESIGN, PROTOTYPING AND INFORMATIONAL PURPOSES ONLY

NOTES:

1. ASP-105990-01-B NOT AVAILABLE AS STANDARD.
2. Ⓞ REPRESENTS A CRITICAL DIMENSION.
3. COPLANARITY: SEE TABLE 1.
4. BURR ALLOWANCE: .0015 MAX.
5. MINIMUM PUSHOUT FORCE: .5 LB.
6. MAXIMUM ALLOWABLE BOW: .002 INCH/INCH AFTER ASSEMBLY.
7. CONTACT NOT ALLOWED TO PROTRUDE FROM TOP OF BODY.
8. PARTS TO BE PACKAGED IN TAPE & REEL.

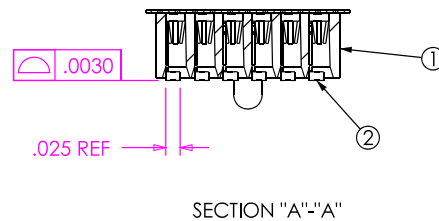
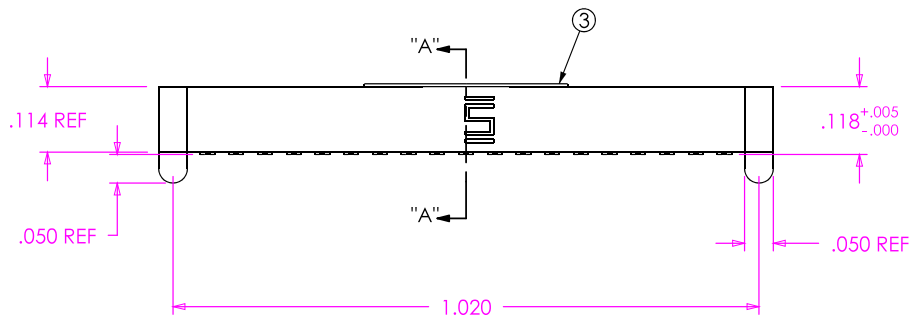
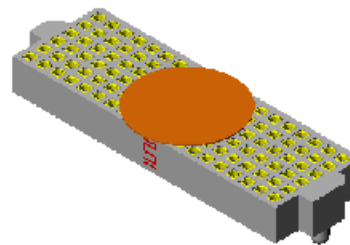
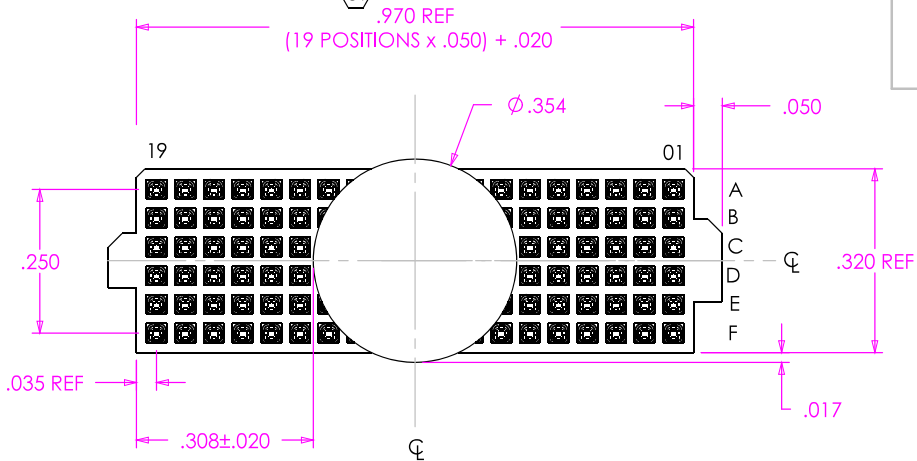
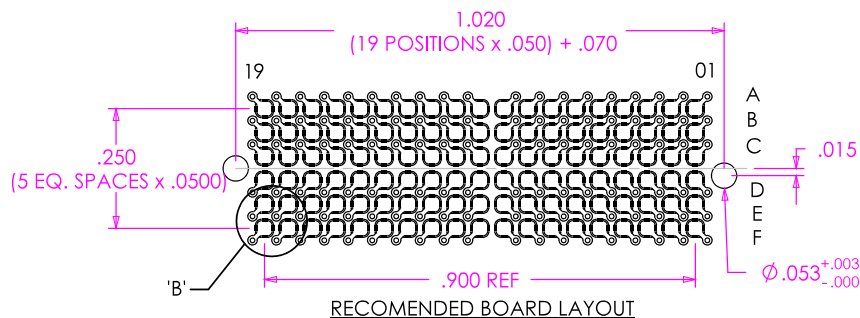
.003 FREE OF SOLDER MASK



DETAIL 'B'  
SCALE 5 : 1

**THIS CONNECTOR IS NOT CAPABLE OF WITHSTANDING TYPICAL LEAD FREE PROCESSING TEMPERATURES.**

**ANY REV. MADE TO THIS PRINT MUST HAVE A UPDATED MKTG. PRINT**



ITEM NO.	PART NUMBER	QUANTITY	MATERIAL
1	ASP-105990-01-B	1.0000	VECTRA E130i, COLOR BLACK
2	C-118-L1-E	114.00	BeCu #25, 1/2 HARD, AGE HARDENED
3	K-850-650	1.0000	POLYAMIDE FILM (KAPTON)
4	CT-ASP1233MS	.00200	CONDUCTIVE POLYMER

UNLESS OTHERWISE SPECIFIED, DIMENSIONS ARE IN INCHES.  
TOLERANCES ARE:  
DECIMALS ANGLES  
.XX: ±.01 [.3] 2°  
.XXX: ±.005 [.13]  
.XXXX: ±.0020 [.051]

**PROPRIETARY NOTE**  
THIS DOCUMENT CONTAINS INFORMATION CONFIDENTIAL AND PROPRIETARY TO SAMTEC, INC. AND SHALL NOT BE REPRODUCED OR TRANSFERRED TO OTHER DOCUMENTS OR DISCLOSED TO OTHERS OR USED FOR ANY PURPOSE OTHER THAN THAT WHICH IT WAS OBTAINED WITHOUT THE EXPRESSED WRITTEN CONSENT OF SAMTEC, INC.

**SAMTEC**

520 PARK EAST BLVD, NEW ALBANY, IN 47150  
\* PHONE: 812.944.6733 FAX: 812.948.5047  
e-Mail: [INFO@SAMTEC.COM](mailto:INFO@SAMTEC.COM) CODE: 55322

PLATING:  
CONTACT AREA: .000050 GOLD OVER .000050 NICKEL  
REMAINDER: .000003 FLASH GOLD OVER .000050 NICKEL

DO NOT SCALE DRAWING SHEET SCALE: 3:1

DESCRIPTION: .050 DUAL SOCKET ASSEMBLY

DWG. NO. ASP-105884-07

BY: T.WERNE 05/14/07 SHEET 1 OF 1

