

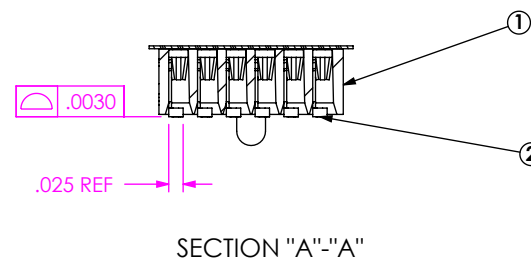
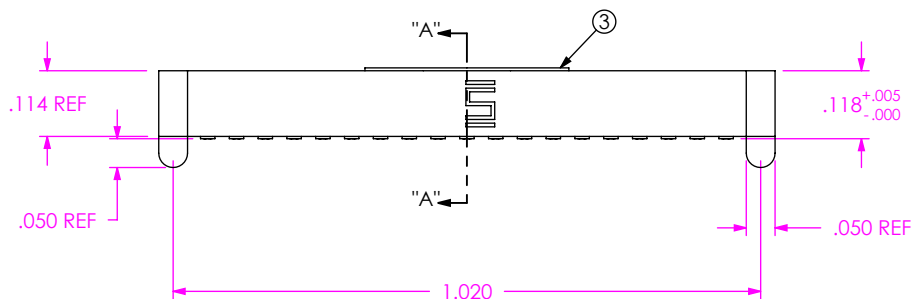
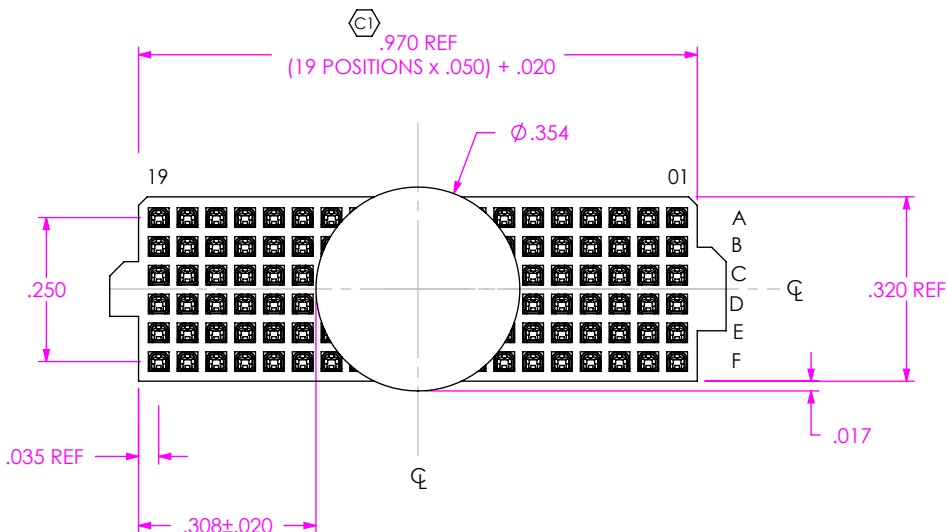
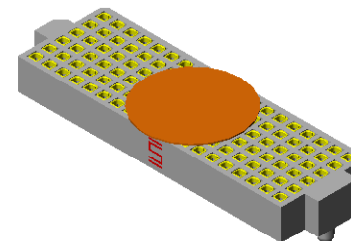
REVISION

0	SJ	P Brumley
8/17/2005	ECN-49471	
ISSUE FOR REVIEW		
1	TW	D DECKER
6/12/2006	ECN-60446	
REDRAW FOOTPRINT TO SHOW DOG BONE DETAILS SEEN ON THE YFT/YFV FOOTPRINT. CHG THE VIA PAD DIAMETER FROM .0250 TO .0200 AND THE VIA DIAMETER FROM .0120 TO .0100.		
A	DF	D DECKER
10/21/2007	ECN-82091	
RELEASE FOR PRODUCTION; BOM: CHG ITEM 3 MATERIAL FROM "POLYIMIDE FILM (KAPTON)" TO "POLYIMIDED FILM (KAPTON)"		
B	TP	T LOZIER
2/27/2008	ECN-86909	
TAPE & REEL VIEW: ADD MISSING ALIGNMENT PIN SLOT TO POCKET		

- NOTES:
 1. FILL ASP-105990-01-B BODY WITH LOW INSERTION FORCE C-118-L1-H CONTACTS; NOT AVAILABLE AS STANDARD.
 2. C REPRESENTS A CRITICAL DIMENSION.
 3. COPLANARITY: SEE TABLE 1.
 4. BURR ALLOWANCE: .0015 MAX.
 5. MINIMUM PUSHOUT FORCE: .5 LB.
 6. MAXIMUM ALLOWABLE BOW: .002 INCH/INCH AFTER ASSEMBLY.
 7. CONTACT NOT ALLOWED TO PROTRUDE FROM TOP OF BODY.
 8. PARTS TO BE PACKAGED IN T&R.

THIS CONNECTOR IS NOT CAPABLE OF WITHSTANDING TYPICAL LEAD FREE PROCESSING TEMPERATURES.

ANY REV. MADE TO THIS PRINT MUST BE HAVE A UPDATED MKTG. PRINT



ITEM NO.	PART NUMBER	QUANTITY	MATERIAL
1	ASP-105990-01-B	1.0000	VECTRA E130i, COLOR BLACK
2	C-118-L1-H	114.00	BeCu #25, 1/2 HARD, AGE HARDENED
3	K-850-650	1.0000	POLYIMIDE FILM (KAPTON)
4	CT-ASP1233MS	.00200	CONDUCTIVE POLYMER

UNLESS OTHERWISE SPECIFIED, DIMENSIONS ARE IN INCHES.
 TOLERANCES ARE:
 DECIMALS ANGLES
 .XX: ±.01 [.3] 2°
 .XXX: ±.005 [.13]
 .XXXX: ±.0020 [.051]

PROPRIETARY NOTE
 THIS DOCUMENT CONTAINS INFORMATION CONFIDENTIAL AND PROPRIETARY TO SAMTEC, INC. AND SHALL NOT BE REPRODUCED OR TRANSFERRED TO OTHER DOCUMENTS OR DISCLOSED TO OTHERS OR USED FOR ANY PURPOSE OTHER THAN THAT WHICH IT WAS OBTAINED WITHOUT THE EXPRESSED WRITTEN CONSENT OF SAMTEC, INC.



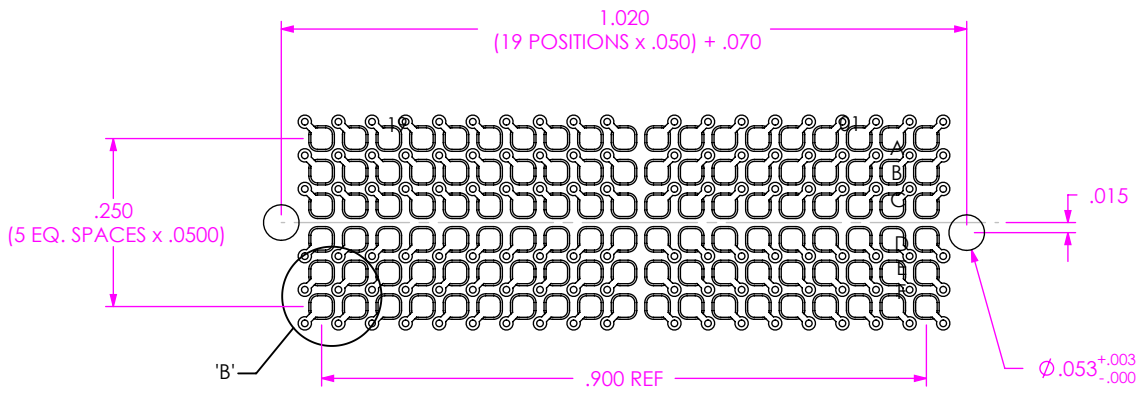
520 PARK EAST BLVD., NEW ALBANY, IN 47150
 PHONE: 812-944-6733 FAX: 812-948-5047
 e-Mail: info@SAMTEC.com code: 55322

DO NOT SCALE DRAWING SHEET SCALE: 3:1
 PLATING:
 CONTACT AREA: .000030 GOLD OVER .000050 NICKEL
 REMAINDER: .000003 FLASH GOLD OVER .000050 NICKEL

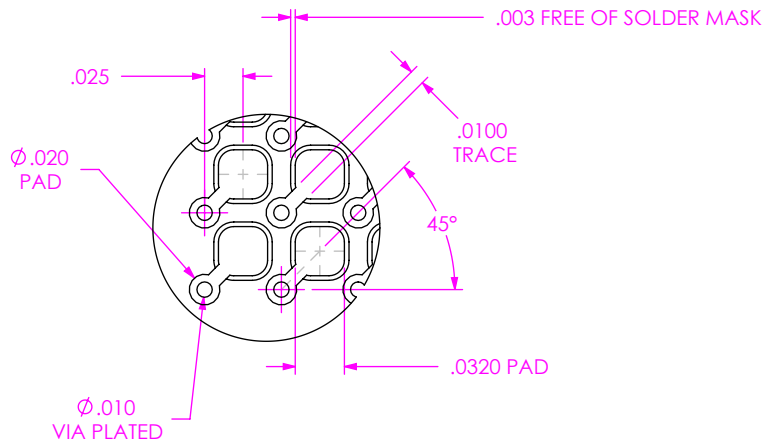
DESCRIPTION: .050 DUAL SOCKET ASSEMBLY

DWG. NO. ASP-105884-06

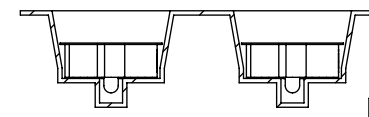
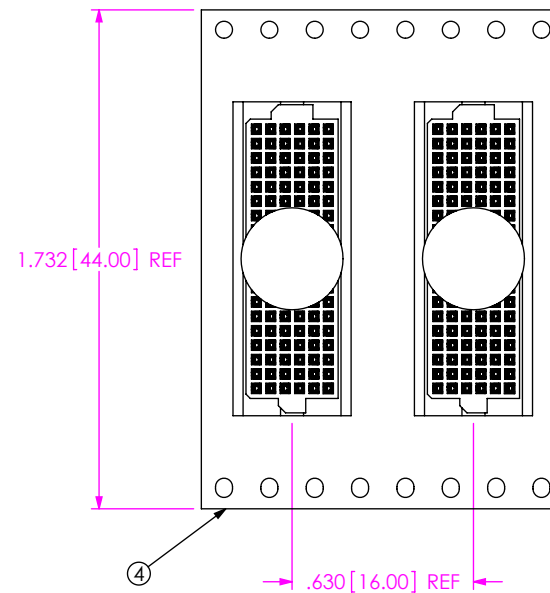
BY: JENNINGS 08/17/2005 SHEET 1 OF 2



RECOMENDED BOARD LAYOUT



DETAIL 'B'
SCALE 8 : 1



USER DIRECTION OF UNREELING →
POCKET NOT DETAILED

PACKAGING VIEW

PROPRIETARY NOTE

THIS DOCUMENT CONTAINS INFORMATION CONFIDENTIAL AND PROPRIETARY TO SAMTEC, INC. AND SHALL NOT BE REPRODUCED OR TRANSFERRED TO OTHER DOCUMENTS OR DISCLOSED TO OTHERS OR USED FOR ANY PURPOSE OTHER THAN THAT WHICH IT WAS OBTAINED WITHOUT THE EXPRESSED WRITTEN CONSENT OF SAMTEC, INC.



520 PARK EAST BLVD., NEW ALBANY, IN 47150
PHONE: 812-944-6733 FAX: 812-948-5047
e-Mail: info@SAMTEC.com code: 55322

SHEET SCALE: 3:1

DESCRIPTION:
.050 DUAL SOCKET ASSEMBLY

DWG. NO.
ASP-105884-06