

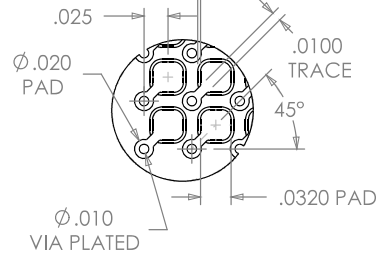
REVISION

A	CW	M BAUMANN
2/11/2005 ECN-43391		
RELEASE FOR PRODUCTION		
B	TW	D DECKER
6/9/2006 ECN-60421		
REDRAW FOOTPRINT TO SHOW DOG BONE DETAILS SEEN ON THE Y77/YFW FOOTPRINT. CHG. THE VIA PAD DIAMETER FROM .0250 TO .0200 AND THE VIA DIAMETER FROM .0120 TO .0100.		
C	TW	C GRANTZ
3/2/2007 ECN-72276		
CHG. TUBE FROM PFT-1-24-02-60 TO PFT-1-24-01-61.		
D	BP	J FREEMAN
3/23/2007 ECN-73596		
TUBE VIEW: CHG FROM PFT-1-24-02-60 TO PFT-1-24-01-61		

NOTES:

1. ASP-105990-01-B NOT AVAILABLE AS STANDARD.
2. Ⓢ REPRESENTS A CRITICAL DIMENSION.
3. COPLANARITY: SEE TABLE 1.
4. BURR ALLOWANCE: .0015 MAX.
5. MINIMUM PUSHOUT FORCE: .5 LB.
6. MAXIMUM ALLOWABLE BOW: .002 INCH/INCH AFTER ASSEMBLY.
7. CONTACT NOT ALLOWED TO PROTRUDE FROM TOP OF BODY.
8. PARTS TO BE PACKAGED IN TUBES.

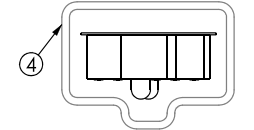
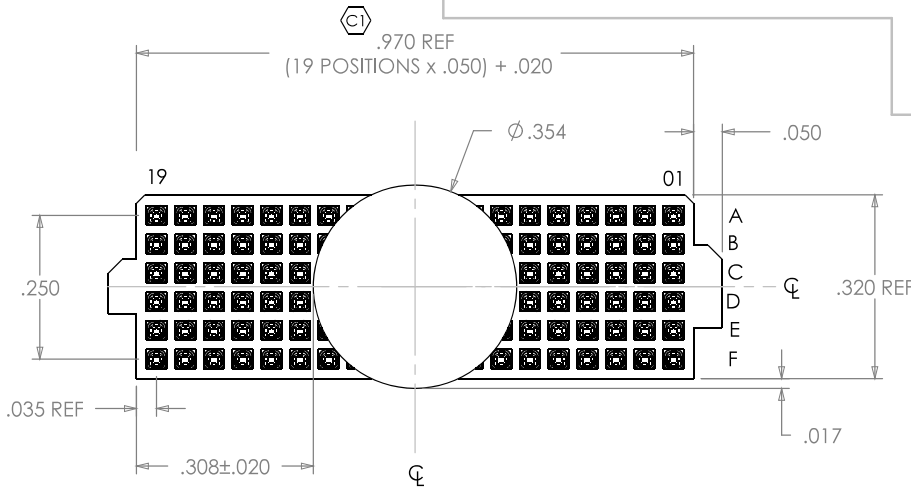
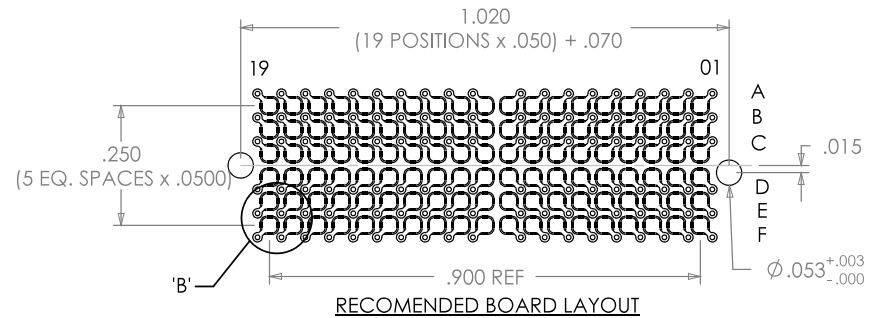
.003 FREE OF SOLDER MASK



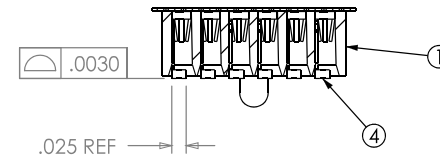
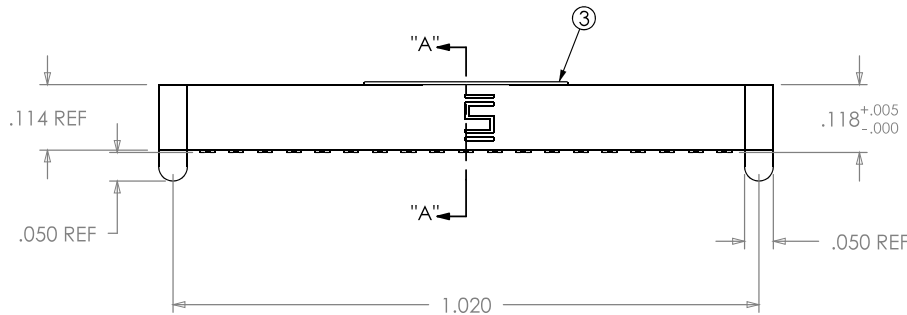
DETAIL 'B'  
SCALE 5 : 1

**THIS CONNECTOR IS NOT CAPABLE OF WITHSTANDING TYPICAL LEAD FREE PROCESSING TEMPERATURES.**

**ANY REV. MADE TO THIS PRINT MUST BE HAVE A UPDATED MKTG. PRINT**



**PACKAGING VIEW**



SECTION "A"-"A"

ITEM NO.	PART NUMBER	QUANTITY	MATERIAL
1	ASP-105990-01-B	1.0000	VECTRA E130i, COLOR BLACK
2	C-118-01-H	114.00	BeCu #25, 1/2 HARD, AGE HARDENED
3	K-850-650	1.0000	POLYAMIDE FILM (KAPTON)
4	PT-1-24-01-61	.00200	ANTISTATIC PVC
5	TP-09	.00400	THERMOPLASTIC RUBBER

UNLESS OTHERWISE SPECIFIED, DIMENSIONS ARE IN INCHES.  
TOLERANCES ARE:  
DECIMALS ANGLES  
.XX: ±.01[.3] 2°  
.XXX: ±.005[.13]  
.XXXX: ±.0020[.051]

PROPRIETARY NOTE

THIS DOCUMENT CONTAINS INFORMATION CONFIDENTIAL AND PROPRIETARY TO SAMTEC, INC. AND SHALL NOT BE REPRODUCED OR TRANSFERRED TO OTHER DOCUMENTS OR DISCLOSED TO OTHERS OR USED FOR ANY PURPOSE OTHER THAN THAT WHICH IT WAS OBTAINED WITHOUT THE EXPRESSED WRITTEN CONSENT OF SAMTEC, INC.

**SAMTEC**

520 PARK EAST BLVD, NEW ALBANY, IN 47150  
\* PHONE: 812.944.6733 FAX: 812.948.5047  
e-Mail: [INFO@SAMTEC.COM](mailto:INFO@SAMTEC.COM) CODE: 55322

DO NOT SCALE DRAWING SHEET SCALE: 3:1  
PLATING:  
CONTACT AREA: .000030 GOLD OVER .000050 NICKEL  
REMAINDER: .000003 FLASH GOLD OVER .000050 NICKEL

DESCRIPTION: .050 DUAL SOCKET ASSEMBLY

DWG. NO. ASP-105884-05

BY: WHITTAKER 4/8/2003 SHEET 1 OF 1

