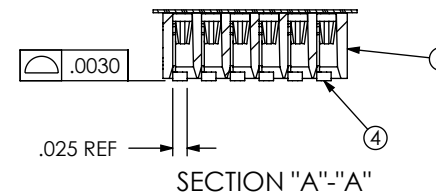
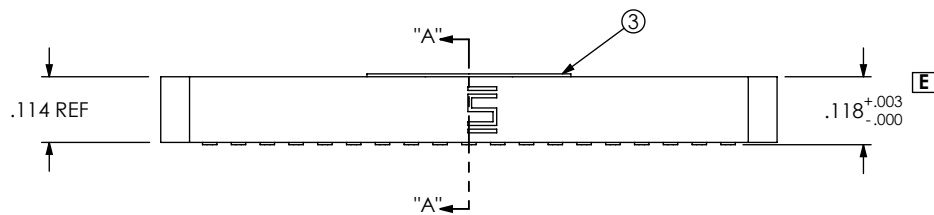
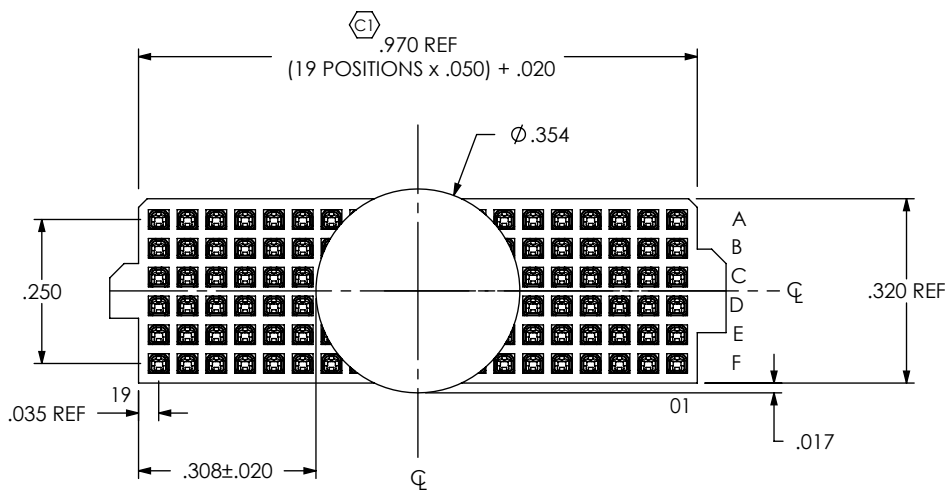
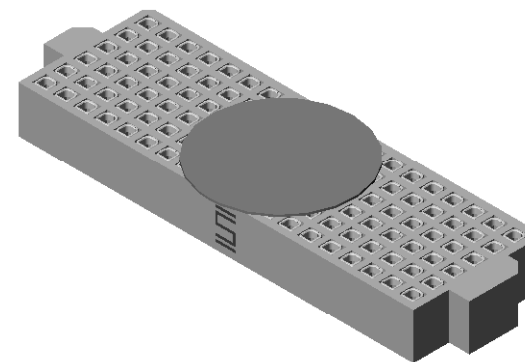


NOTES:

1. ASP-105990-03-B NOT AVAILABLE AS STANDARD.
2. Ⓢ REPRESENTS A CRITICAL DIMENSION.
3. COPLANARITY: SEE TABLE 1.
4. BURR ALLOWANCE: .0015 MAX.
5. MINIMUM PUSHOUT FORCE: .5 LB.
6. MAXIMUM ALLOWABLE BOW: .002 INCH/INCH AFTER ASSEMBLY.
7. CONTACT NOT ALLOWED TO PROTRUDE FROM TOP OF BODY.
8. PARTS TO BE PACKAGED IN T&R.

REVISION

A	CW	C GRANTZ
4/27/2005	ECN-45799	
RELEASE FOR PRODUCTION		
B	TW	D DECKER
6/9/2006	ECN-60417	
REDRAW FOOTPRINT TO SHOW DOG BONE DETAILS SEEN ON THE FY7Y/FW FOOTPRINT		
C	TW	M BOONE
4/15/2009	ECN-108659	
BOM: ITEM 3 CHG FROM "POLYAMIDE FILM" TO "POLYIMIDE FILM"; SHT 2, DETAIL B, ADD R.010 TYP		
D	TP	J Hahn
9/29/2009	ECN-117571	
SHT 1, TOP VIEW: MOVE POS 1 CALLOUT TO BOTTOM RIGHT CORE & POS 19 CALLOUT TO BOTTOM LEFT CORE; SHT 2: RECOMMENDED PCB LAYOUT: MOVE POS 1 CALLOUT TO BOTTOM RIGHT CORE & POS 19 CALLOUT TO BOTTOM LEFT CORE		
E	GP	J Hahn
4/13/2010	ECN-129200	
SHT 1, FRONT VIEW: CHG .118 +.005, -.000 TO .118 +.003, -.000; SHT 2: RECOMMENDED BOARD LAYOUT VIEW. DELETE -A PIN HOLES.		



ITEM NO.	PART NUMBER	QUANTITY	MATERIAL
1	ASP-105990-03-B	1.0000	VECTRA E130i, COLOR BLACK
2	C-118-01-H	114.00	BeCu #25, 1/2 HARD, AGE HARDENED
3	K-850-650	1.0000	POLYIMIDE FILM
4	CT-ASP1233MS	1.0000	CONDUCTIVE POLYMER

UNLESS OTHERWISE SPECIFIED, DIMENSIONS ARE IN INCHES.  
TOLERANCES ARE:  
DECIMALS ANGLES  
.XX: ±.01 [.3] 2°  
.XXX: ±.005 [.13]  
.XXXX: ±.0020 [.051]

PROPRIETARY NOTE

THIS DOCUMENT CONTAINS INFORMATION CONFIDENTIAL AND PROPRIETARY TO SAMTEC, INC. AND SHALL NOT BE REPRODUCED OR TRANSFERRED TO OTHER DOCUMENTS OR DISCLOSED TO OTHERS OR USED FOR ANY PURPOSE OTHER THAN THAT WHICH IT WAS OBTAINED WITHOUT THE EXPRESSED WRITTEN CONSENT OF SAMTEC, INC.



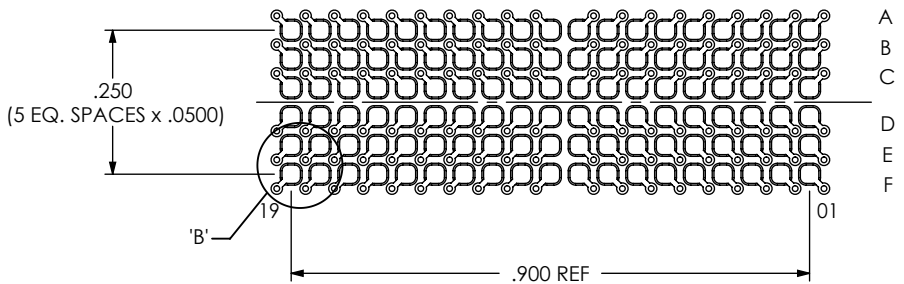
520 PARK EAST BLVD, NEW ALBANY, IN 47150  
PHONE: 812-944-6733 FAX: 812-948-5047  
e-Mail: info@SAMTEC.com code: 55322

DO NOT SCALE DRAWING SHEET SCALE: 3:1  
PLATING:  
CONTACT AREA: .000030 GOLD OVER .000050 NICKEL  
REMAINDER: .000003 FLASH GOLD OVER .000050 NICKEL

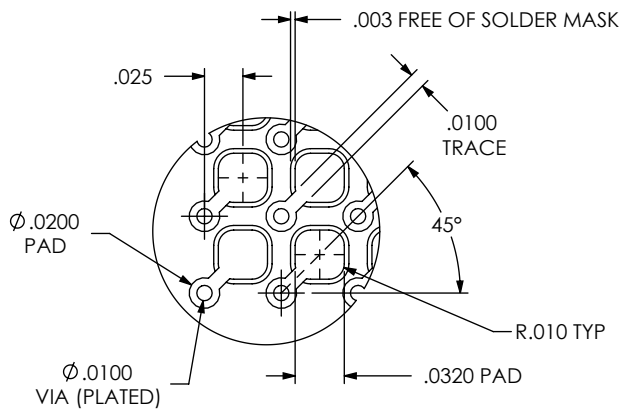
DESCRIPTION: .050 DUAL SOCKET ASSEMBLY

DWG. NO. ASP-105884-04

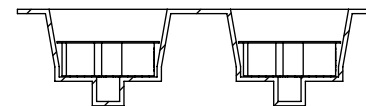
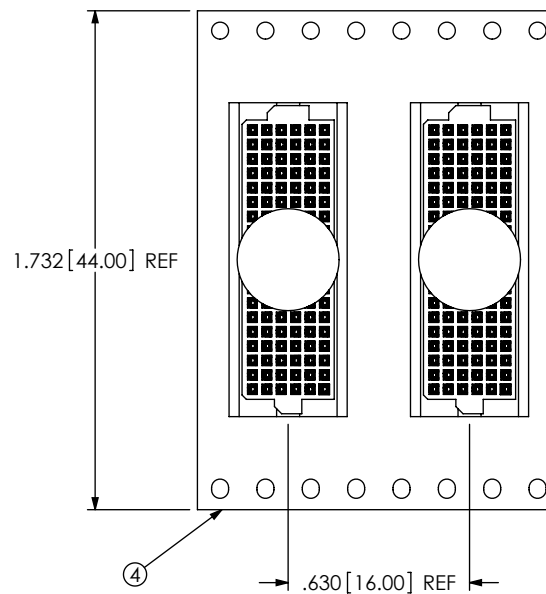
BY: WHITTAKER 4/27/2005 SHEET 1 OF 2



RECOMMENDED BOARD LAYOUT



DETAIL 'B'  
SCALE 8 : 1



USER DIRECTION OF UNREELING →  
POCKET NOT DETAILED

PACKAGING VIEW

PROPRIETARY NOTE

THIS DOCUMENT CONTAINS INFORMATION CONFIDENTIAL AND PROPRIETARY TO SAMTEC, INC. AND SHALL NOT BE REPRODUCED OR TRANSFERRED TO OTHER DOCUMENTS OR DISCLOSED TO OTHERS OR USED FOR ANY PURPOSE OTHER THAN THAT WHICH IT WAS OBTAINED WITHOUT THE EXPRESSED WRITTEN CONSENT OF SAMTEC, INC.



520 PARK EAST BLVD, NEW ALBANY, IN 47150  
PHONE: 812-944-6733 FAX: 812-948-5047  
e-Mail: info@SAMTEC.com code: 55322

SHEET SCALE: 3:1

DESCRIPTION:  
.050 DUAL SOCKET ASSEMBLY

DWG. NO.  
ASP-105884-04