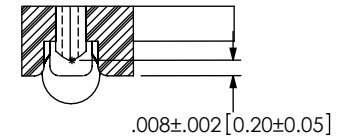
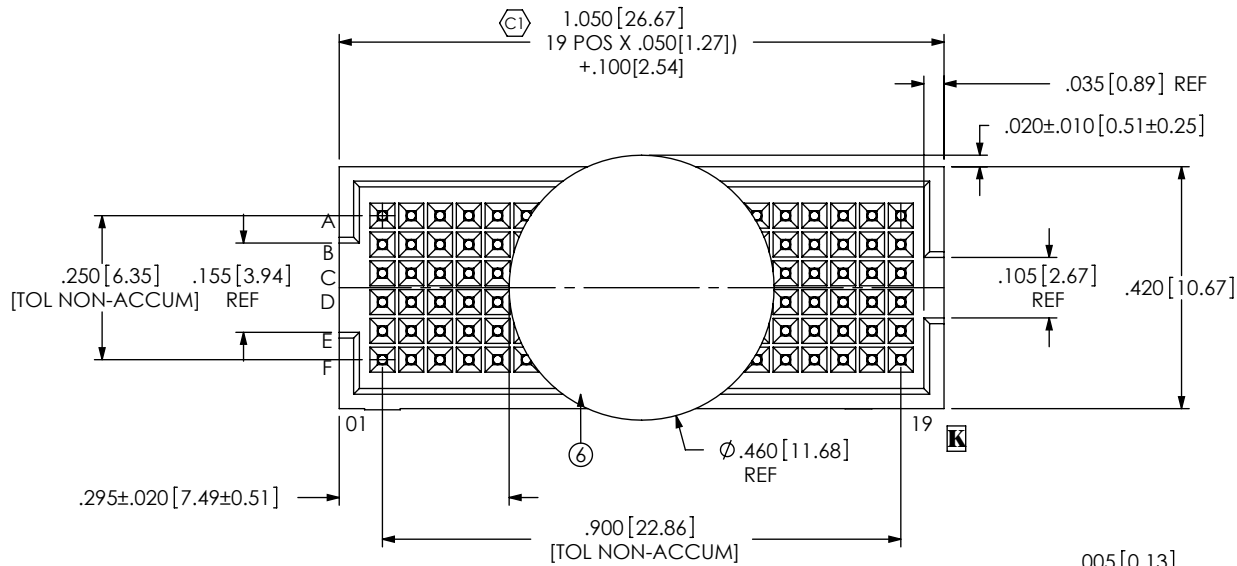
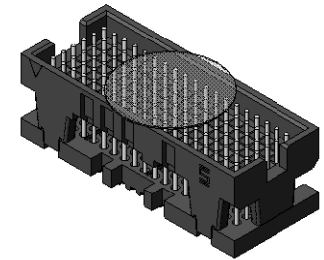


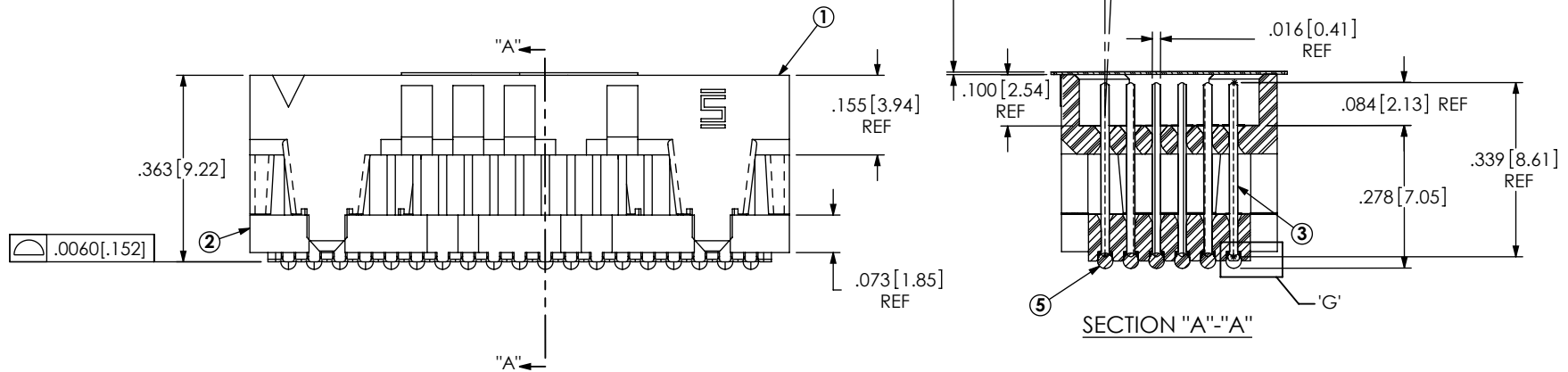
REVISION

H	JB	J HENRY
8/11/2009	ECN-115048	
SHT 1, BOM: CHG 96.5% TIN/3% GOLD/0.5% COPPER TO CHG 96.5% TIN/3% SILVER/0.5% COPPER		
J	JB	J Hahn
8/20/2009	ECN-115599	
SHEET 1: ADD IN-PROCESS DETAIL 'G'; SHEET 2: DEL IN-PROCESS DETAIL 'G', ADD RECOMMENDED STENCIL LAYOUT		
K	TW	J Hahn
9/29/2009	ECN-117553	
SHT 1, TOP VIEW: CHG POS 1 CALLOUT FROM TOP LEFT TO BOTTOM LEFT & POS 19 FROM TOP RT TO BOTTOM RT; SHT 2, RECOMMENDED PCB LAYOUT AND STENCIL LAYOUT: CHG POS 1 CALLOUT FROM TOP LEFT TO BOTTOM LEFT & POS 19 FROM TOP RT TO BOTTOM RT		

- NOTES:
- ITEMS -1, -2, & -3 NOT AVAILABLE AS STANDARD.
  - ⊙ REPRESENTS A CRITICAL DIMENSION.
  - BURR ALLOWANCE: .0015[.038] MAX.
  - MAXIMUM CUT FLASH: .010.
  - MINIMUM PUSHOUT FORCE: .5 LB.
  - MAXIMUM ALLOWABLE BOW: TOP/BOTTOM: .006[.15], SIDE/SIDE: .003[.08].
  - PARTS TO BE PACKAGED IN TAPE & REEL.
  - LEAD FREE SOLDER BALLS



IN-PROCESS DETAIL 'G' SCALE TO: 1 (SOLDER BALL REMOVED FOR CLARITY)



ACCEPTANCE OF DRAWING:  
ACCEPTED WITH DEVIATIONS LISTED

DATE: \_\_\_\_\_  
COMPANY: \_\_\_\_\_  
CUSTOMER SIGNATURE: \_\_\_\_\_  
PRINTED NAME: \_\_\_\_\_  
PHONE NO: \_\_\_\_\_  
FAX NO: \_\_\_\_\_

ITEM NO.	PART NUMBER	QUANTITY	MATERIAL
1	ASP-144052-01-B	1.0000	VECTRA E130i, COLOR: BLACK, UL RATING 94V-0
2	ASP-136535-01-B	1.0000	VECTRA E130i, COLOR: BLACK
3	ASP-104554-02-P-H	114.00	BRASS ALLOY 260, 3/4 HARD
4	CT-ASP1134MS	.00571	CONDUCTIVE POLYMER
5	SDB-030-9653	114.00	96.5% TIN / 3% SILVER/ 0.5% COPPER
6	K-850-650	1.0000	POLYIMIDE FILM

UNLESS OTHERWISE SPECIFIED, DIMENSIONS ARE IN INCHES. TOLERANCES ARE:  
DECIMALS ANGLES  
.XX: ±.01 2°  
.XXX: ±.005  
.XXXX: ±.0020

PROPRIETARY NOTE  
THIS DOCUMENT CONTAINS INFORMATION CONFIDENTIAL AND PROPRIETARY TO SAMTEC, INC. AND SHALL NOT BE REPRODUCED OR TRANSFERRED TO OTHER DOCUMENTS OR DISCLOSED TO OTHERS OR USED FOR ANY PURPOSE OTHER THAN THAT WHICH IT WAS OBTAINED WITHOUT THE EXPRESSED WRITTEN CONSENT OF SAMTEC, INC.

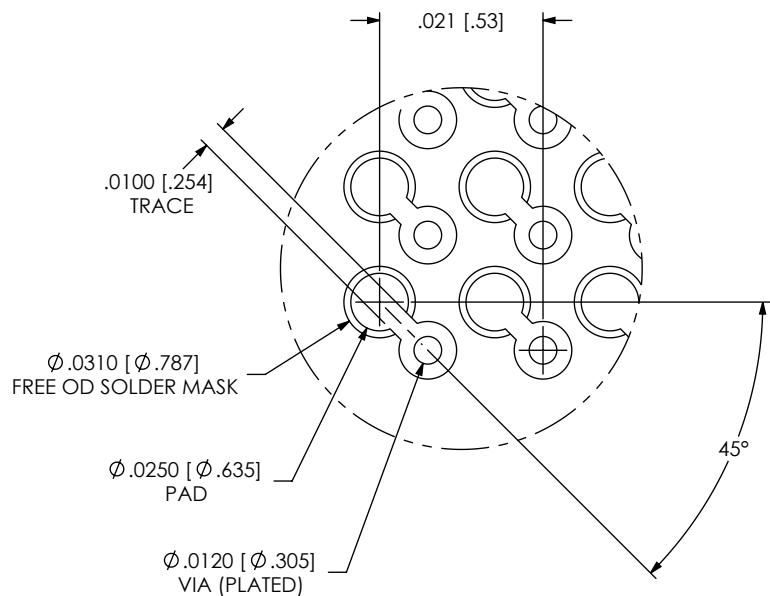
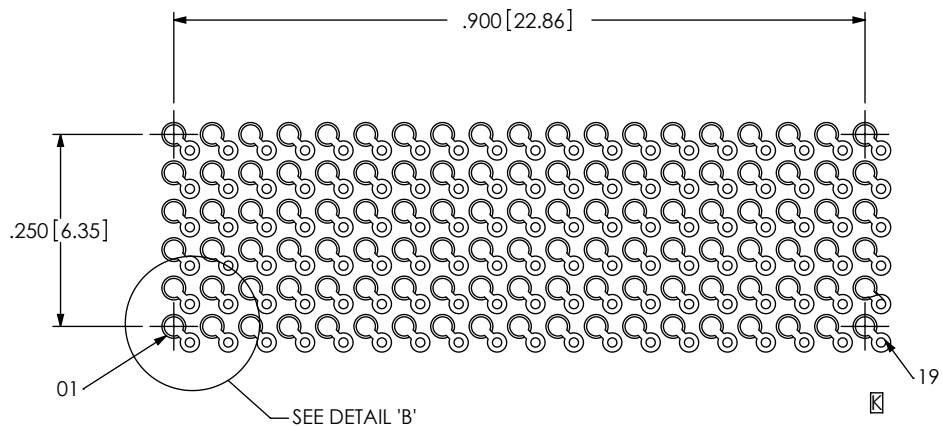


520 PARK EAST BLVD., NEW ALBANY, IN 47150  
PHONE: 812-944-6733 FAX: 812-948-5047  
e-Mail: info@SAMTEC.com code: 55322

DO NOT SCALE DRAWING SHEET SCALE: 1:0.3333333333333333  
PLATING:  
CONTACT AREA: .000030 GOLD OVER .000050 NICKEL  
REMAINDER: .000003 GOLD OVER .000050 NICKEL

DESCRIPTION:  
FLEX, Y, Z, .050 TERMINAL ASSEMBLY  
DWG. NO.  
ASP-103614-04  
BY: TAMMY W 09/11/06 SHEET 1 OF 2

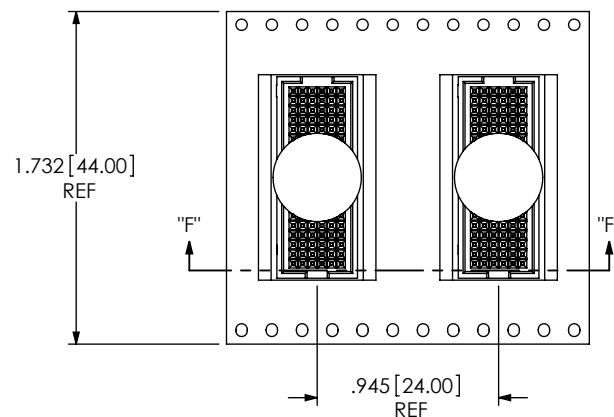
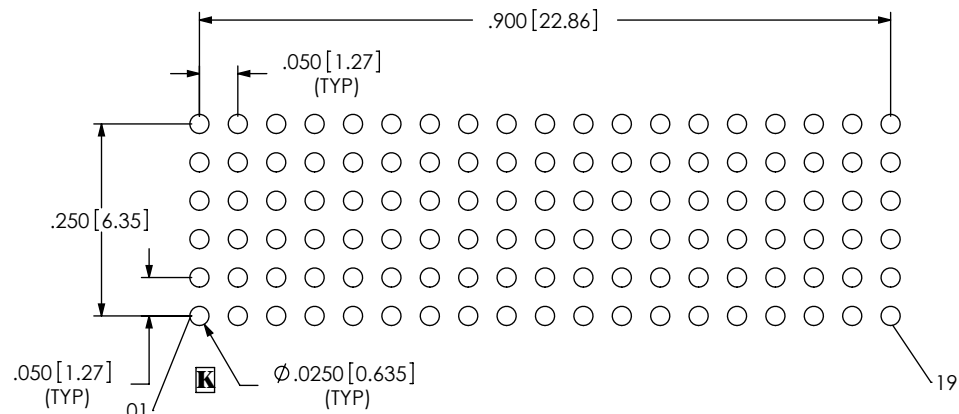
RECOMMENDED BOARD LAYOUT



DETAIL 'B'

RECOMMENDED STENCIL LAYOUT

STENCIL TO BE  $.00060 [ .152 ]$  THICK



USER DIRECTION OF UN-REELING  
POCKET NOT DETAILED



SECTION "F"- "F"  
SCALE 1 : 1

PACKAGING VIEW

PROPRIETARY NOTE

THIS DOCUMENT CONTAINS INFORMATION CONFIDENTIAL AND PROPRIETARY TO SAMTEC, INC. AND SHALL NOT BE REPRODUCED OR TRANSFERRED TO OTHER DOCUMENTS OR DISCLOSED TO OTHERS OR USED FOR ANY PURPOSE OTHER THAN THAT WHICH IT WAS OBTAINED WITHOUT THE EXPRESSED WRITTEN CONSENT OF SAMTEC, INC.



520 PARK EAST BLVD. NEW ALBANY, IN 47150  
PHONE: 812-944-6733 FAX: 812-948-5047  
e-Mail: info@SAMTEC.com code: 55322

SHEET SCALE: 3:1

DESCRIPTION: FLEX, Y, Z,  $.050$  TERMINAL ASSEMBLY

DWG. NO. ASP-103614-04