

REVISION

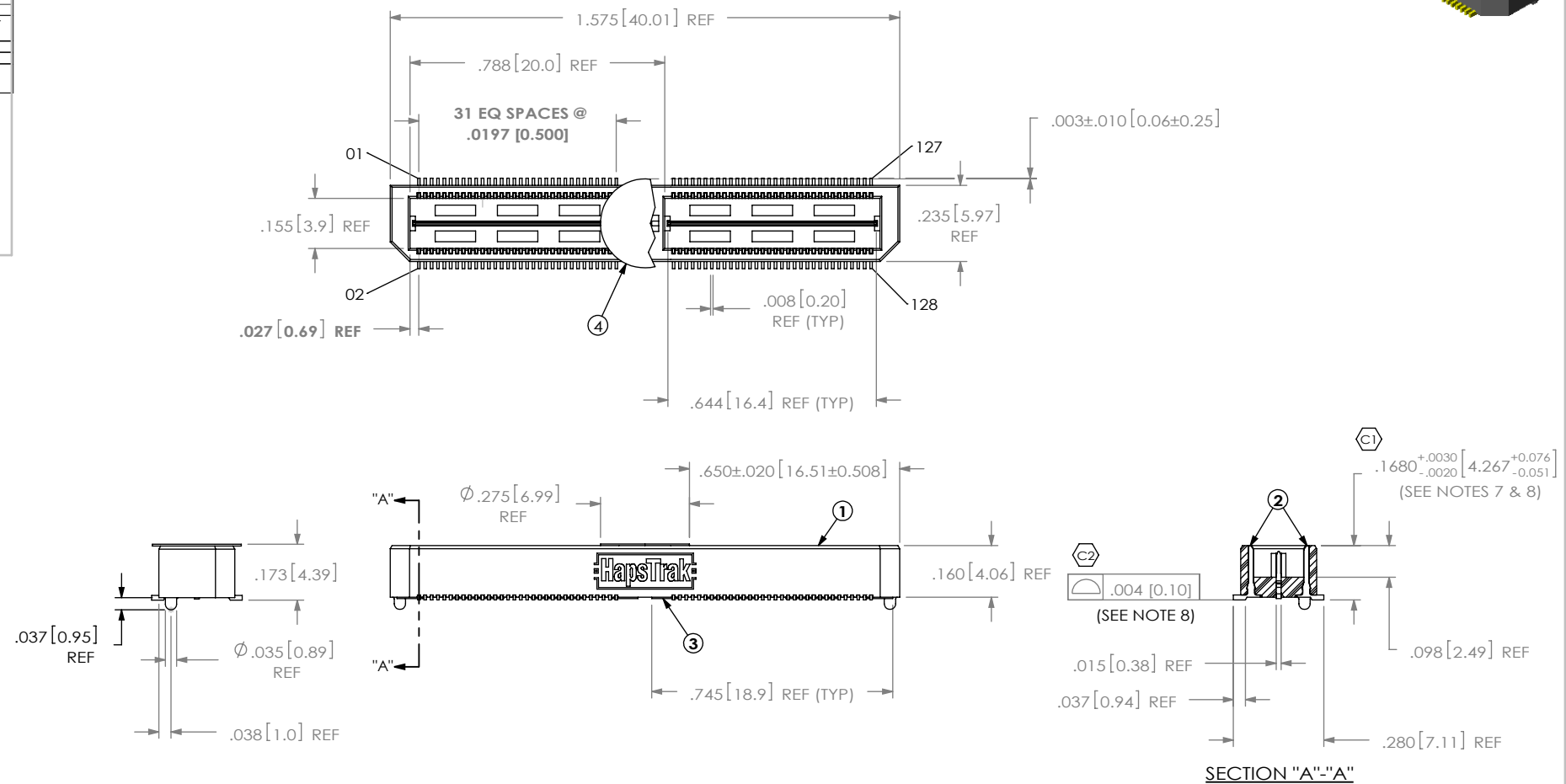
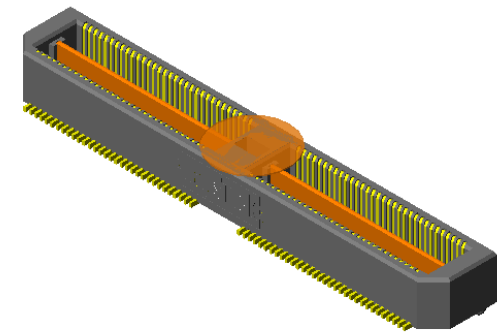
5-4-2007	ECN-75550	
ISSUE FOR REVIEW		
A	JB	D TERRELL
11-8-2007	ECN-82748	
RELEASE FOR PRODUCTION		
B	TP	M TOWNSEND
12-31-2007	ECN-84850	
BOM CHG ITEM 2 FROM T-1S39-01-L TO ASP-137237-02-P-L & ITEM 3 FROM T-1G1-01-G TO ASP-137238-02-P-G		
C	RL	T LOZIER
4-23-2008	ECN-89623	
BOM CHG ITEM 2 FROM ASP-137237-02-P-L TO T-1S39-01-L, CHG ITEM 3 FROM ASP-137238-02-P-G TO T-1G1-01-G		
D	FF	J FREEMAN
9-4-2008	ECN-98700	
BOM CHG ITEM 3 FROM T-1G1-01-G TO T-1G1-01-L		
E	VZ	S Chandrashekar
7-23-2009	ECN-114068	
ADD SHT 3 TO REFLECT HAPSTRAK FOOTPRINT		

DATE:	COMPANY:	CUSTOMER SIGNATURE	PRINTED NAME

ITEM NO.	PART NUMBER	QUANTITY	MATERIAL
1	ASP-132420-01-B	1.0000	VECTRA E130i, COLOR: BLACK
2	T-1S39-01-L	128.00	PHOS BRONZE, 510 SPRING TEMPER
3	T-1G1-01-L	2.0000	PHOS BRONZE, 510 HALF HARD TEMPER
4	K-500-300	1.0000	POLYIMIDE FILM (KAPTON)
5	TRAY-QXX002-PR-01-AP-T-A	1.0000	ANTI-STATIC BLACK HIPS

NOTES:

- 64 POSITION QTH IS NON-STANDARD.
- USE ASP-132420-01-B BODY.
- ⊙ REPRESENTS A CRITICAL DIMENSION.
- MINIMUM PUSHOUT FORCE: .5 LB.
- MINIMUM GROUND PLANE RETENTION: 1 LB.
- PARTS TO BE MOLDED TO POSITION.
- MAXIMUM VARIANCE OF .002[.05], APPLIES TO SIGNAL OR GROUNDS INDEPENDENT OF THE GROUND OR SIGNAL PINS RESPECTIVELY.
- GROUND PLANE PRESS HEIGHT MUST BE .003 [.07] LESS THAN THE MAXIMUM HEIGHT OR .002[.03] GREATER THAN THE MINIMUM HEIGHT OF SIGNAL PIN.
- PART TO BE PACKAGED IN TRAYS.



UNLESS OTHERWISE SPECIFIED, DIMENSIONS ARE IN INCHES. TOLERANCES ARE: DECIMALS ANGLES .XX: \pm .01[.3] .XXX: \pm .005[.13] .XXXX: \pm .0020[.051]

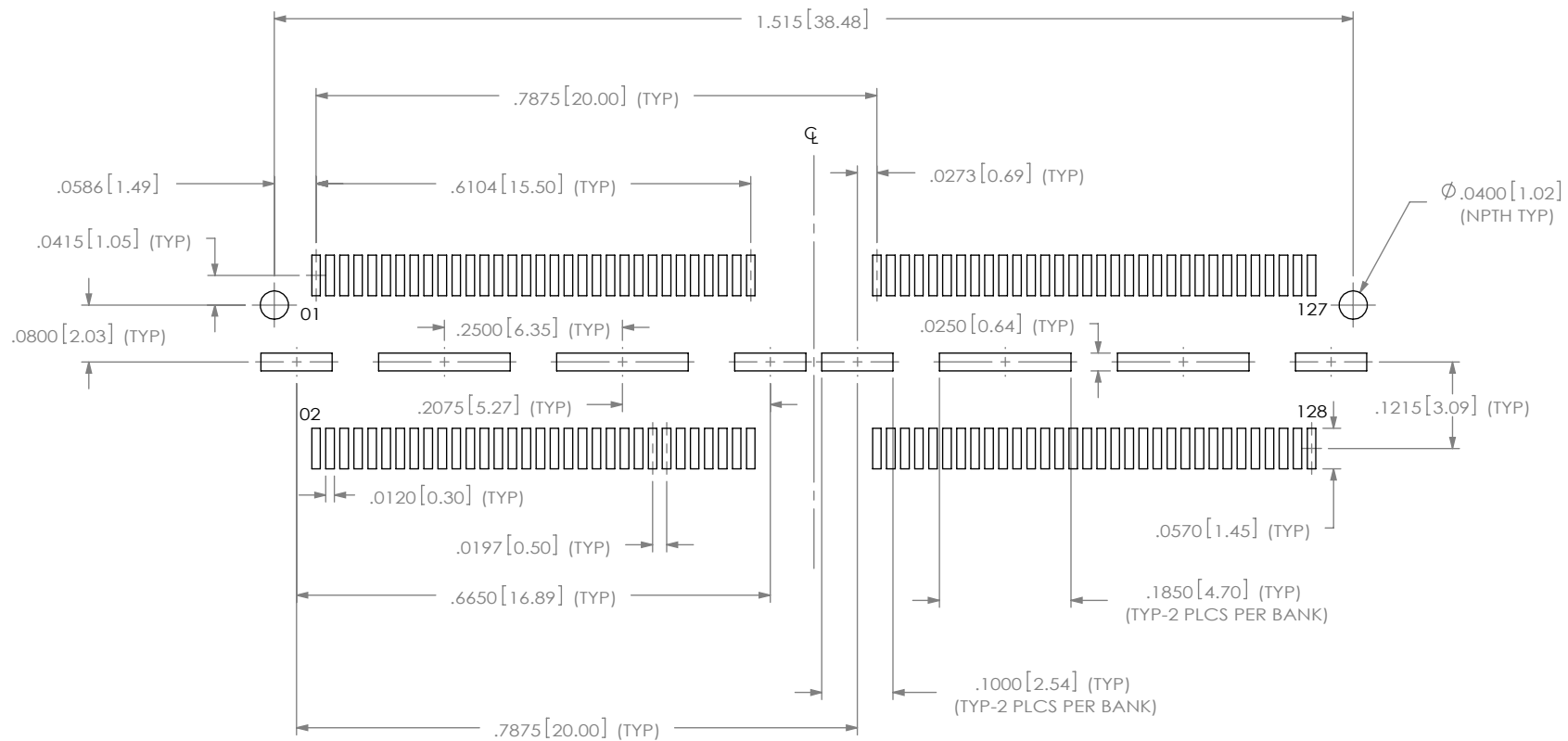
PROPRIETARY NOTE THIS DOCUMENT CONTAINS INFORMATION CONFIDENTIAL AND PROPRIETARY TO SAMTEC, INC. AND SHALL NOT BE REPRODUCED OR TRANSFERRED TO OTHER DOCUMENTS OR DISCLOSED TO OTHERS OR USED FOR ANY PURPOSE OTHER THAN THAT WHICH IT WAS OBTAINED WITHOUT THE EXPRESSED WRITTEN CONSENT OF SAMTEC, INC.

520 PARK EAST BLVD, NEW ALBANY, IN 47150
 PHONE: 812-944-6733 FAX: 812-948-5047
 e-Mail: info@SAMTEC.com code: 55322

DO NOT SCALE DRAWING SHEET SCALE: 2:1
 PLATING: TERMINAL & GROUND PLANE CONTACT AREA: .00010 GOLD OVER .000050 NICKEL REMAINDER: .000003 GOLD OVER .000050 NICKEL.

DESCRIPTION: MODIFIED QTH ASSEMBLY
 DWG. NO. ASP-132422-01
 BY: B. COOPER 5/4/2007 SHEET 1 OF 3

RECOMMENDED PCB LAYOUT



ALL DIMENSIONS ARE SYMMETRIC ABOUT THE CENTERLINE

PROPRIETARY NOTE

THIS DOCUMENT CONTAINS INFORMATION CONFIDENTIAL AND PROPRIETARY TO SAMTEC, INC. AND SHALL NOT BE REPRODUCED OR TRANSFERRED TO OTHER DOCUMENTS OR DISCLOSED TO OTHERS OR USED FOR ANY PURPOSE OTHER THAN THAT WHICH IT WAS OBTAINED WITHOUT THE EXPRESSED WRITTEN CONSENT OF SAMTEC, INC.



520 PARK EAST BLVD, NEW ALBANY, IN 47150
 PHONE: 812-944-6733 FAX: 812-948-5047
 e-Mail: info@SAMTEC.com code: 55322

SHEET SCALE: 2:1

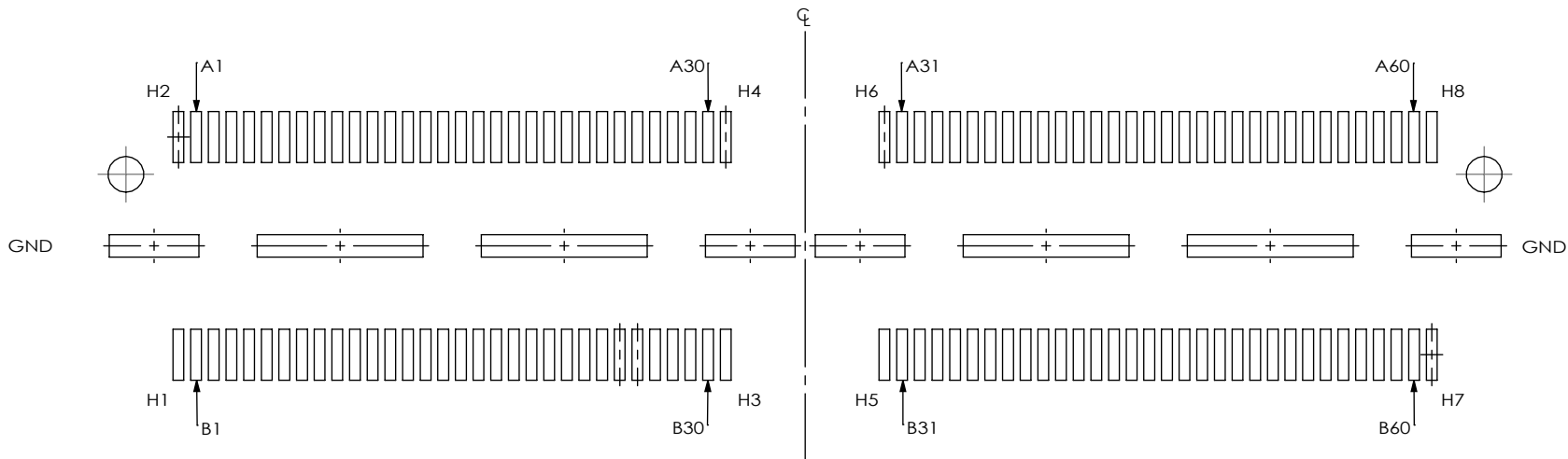
DESCRIPTION:
 MODIFIED QTH ASSEMBLY

DWG. NO.
 ASP-132422-01

BY: B. COOPER 5/4/2007 SHEET 2 OF 3

E

REFERENCE HAPSTRAK II FOOTPRINT



PROPRIETARY NOTE

THIS DOCUMENT CONTAINS INFORMATION CONFIDENTIAL AND PROPRIETARY TO SAMTEC, INC. AND SHALL NOT BE REPRODUCED OR TRANSFERRED TO OTHER DOCUMENTS OR DISCLOSED TO OTHERS OR USED FOR ANY PURPOSE OTHER THAN THAT WHICH IT WAS OBTAINED WITHOUT THE EXPRESSED WRITTEN CONSENT OF SAMTEC, INC.



520 PARK EAST BLVD, NEW ALBANY, IN 47150
 PHONE: 812-944-6733 FAX: 812-948-5047
 e-Mail: info@SAMTEC.com code: 55322

SHEET SCALE: 2:1

DESCRIPTION: MODIFIED QTH ASSEMBLY

DWG. NO. ASP-132422-01