
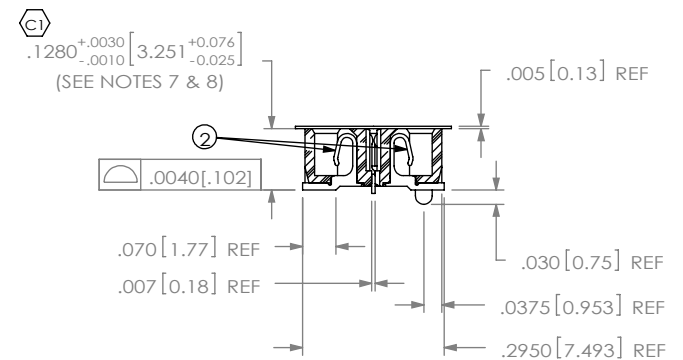
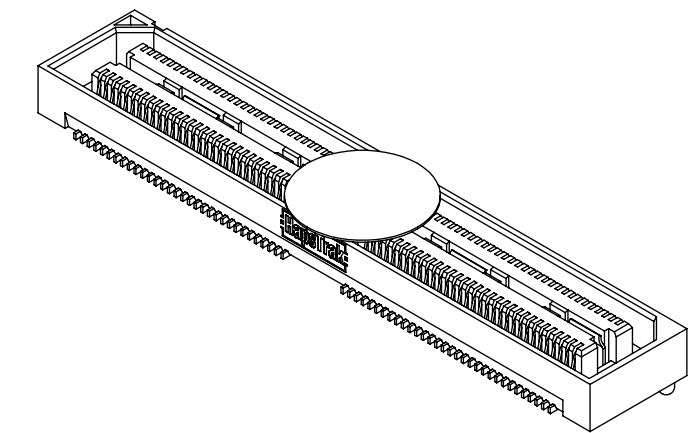
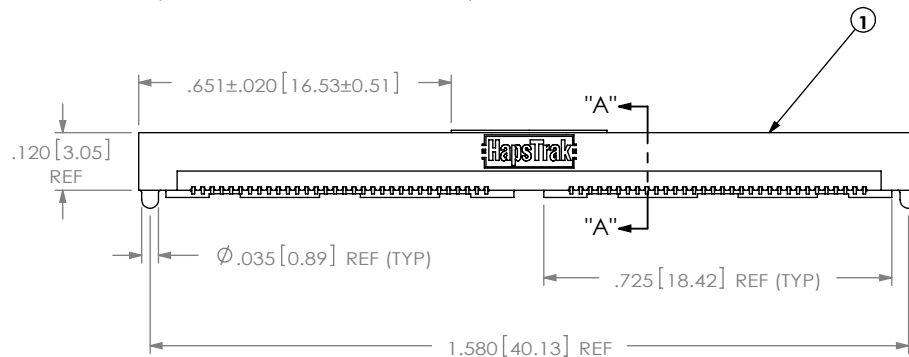
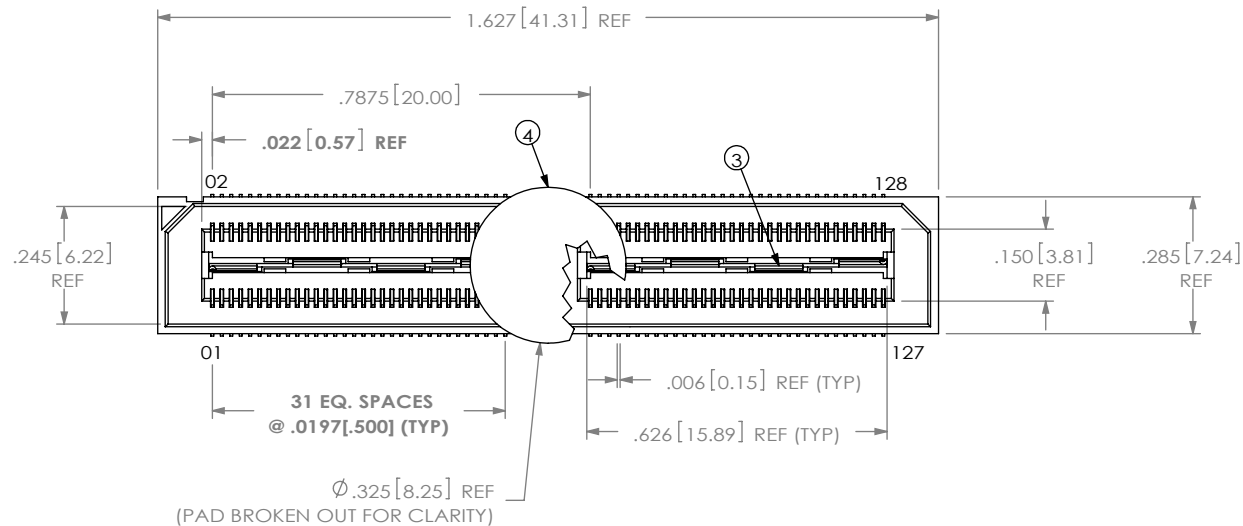


NOTES:

1. **64 POSITION QSH IS NON-STANDARD.**
2. **USE ASP-125448-03-B BODY.**
3.  REPRESENTS A CRITICAL DIMENSION.
4. MINIMUM CONTACT RETENTION: 8 OZ.
5. MINIMUM GROUND PLANE RETENTION: 8 OZ.
6. MAXIMUM BURR ALLOWANCE: .0015[.038].
7. MAXIMUM VARIANCE: .002[.05].
8. DIMENSION APPLIES TO CONTACT & GROUND PLANE.
9. PARTS TO BE PACKAGED IN TRAYS.

	BP	D TERRELL
3/29/2007		ECN-73920
ADD KAPFON		
A	BP	D TERRELL
5/2/2007		ECN-75406
RELEASE FOR PRODUCTION		
B	TP	M TOWNSEND
12/31/2007		ECN-84648
CHG. ITEM#2 ON BOM FROM ASP-137228-02-P/L TO C-126-01-L AND CHG. ITEM#3 ON BOM FROM ASP-137257-02-P/L TO T-1G2-01-G		
C	TW	T LOZIER
5/19/2008		ECN-91256
BOM: CHG ITEM 2 FROM ASP-137228-02-P/L TO C-126-01-L. CHG ITEM 3 FROM ASP-137257-02-P/L TO T-1G2-01-G.		
D	TW	S MANGELS
9/11/2008		ECN-97136
CHG T-1G2-01-L TO ASP-141952-01-P/L.		
E	LV	J FREEMAN
11/28/2008		ECN-101535
BOM: CHG PIN FROM C-126-01 TO C-126-21		
F	TZ	S Chandrasekhar
7/23/2009		ECN-139966
ADD SHEET 3 TO REFLECT HAPSTRACK FOOTPRINT		



UNLESS OTHERWISE SPECIFIED.  
DIMENSIONS ARE IN INCHES.  
TOLERANCES ARE:

DECIMALS	ANGLES
.XX: $\pm .01$ [.3]	2°
.XXX: $\pm .005$ [.13]	
.XXXX: $\pm .0020$ [.051]	

**PROPRIETARY NOTE**  
DOCUMENT CONTAINS INFORMATION  
CONFIDENTIAL AND PROPRIETARY TO  
SAMTEC, INC. AND SHALL NOT BE REPRODUCED  
OR TRANSFERRED TO OTHER DOCUMENTS OR  
DISCLOSED TO OTHERS OR USED FOR ANY  
PURPOSE OTHER THAN THAT WHICH IT WAS  
OBTAINED WITHOUT THE EXPRESSED WRITTEN  
CONSENT OF SAMTEC, INC.

PLATING:  
CONTACT AREA: .000010 GOLD OVER .000050 NICKEL  
REMAINDER: .000200 REF TIN OVER .000050 NICKEL

SHEET SCALE: 2.5:1

DESCRIPTION:

DWG. NO.

### MODIFIED QSH ASSEMBLY

ASP-125516-03

BY: B. PERRY 1/8/2007

SHEET 1 OF 3

ITEM NO.	PART NUMBER	QUANTITY	MATERIAL
1	<b>ASP-125448-03-B</b>	1.0000	VECTRA E130i, COLOR: BLACK
2	C-126-21-L	<b>128.00</b>	PHOS BRONZE, 510 SPRING TEMPER
3	<b>ASP-141952-01-P-L</b>	2.0000	PHOS BRONZE, 510 SPRING TEMPER
4	K-850-650	1.0000	POLYIMIDE FILM (KAPTON)
5	TRAY QXX007-PR-01-AP-T-A	1.0000	ANTI-STATIC BLACK HIPS

**santec**

520 PARK EAST BLVD, NEW ALBANY, IN 47150  
PHONE: 812-944-6733 FAX: 812-948-5047  
e-Mail: [info@SAMTEC.com](mailto:info@SAMTEC.com) code: 55322

PROPRIETARY NOTE

THIS DOCUMENT CONTAINS INFORMATION  
CONFIDENTIAL AND PROPRIETARY TO  
SAMTEC, INC. AND SHALL NOT BE REPRODUCED  
OR TRANSFERRED TO OTHER DOCUMENTS OR  
DISCLOSED TO OTHERS OR USED FOR ANY  
PURPOSE OTHER THAN THAT WHICH IT WAS  
OBTAINED WITHOUT THE EXPRESSED WRITTEN  
CONSENT OF SAMTEC, INC.

SHEET SCALE: 1:1

**samtec**

520 PARK EAST BLVD, NEW ALBANY, IN 47150  
PHONE: 812-944-6733 FAX: 812-948-5047  
e-Mail: [info@SAMTEC.com](mailto:info@SAMTEC.com) code: 55322

DESCRIPTION:	
--------------	--

MODIFIED QSH ASSEMBLY

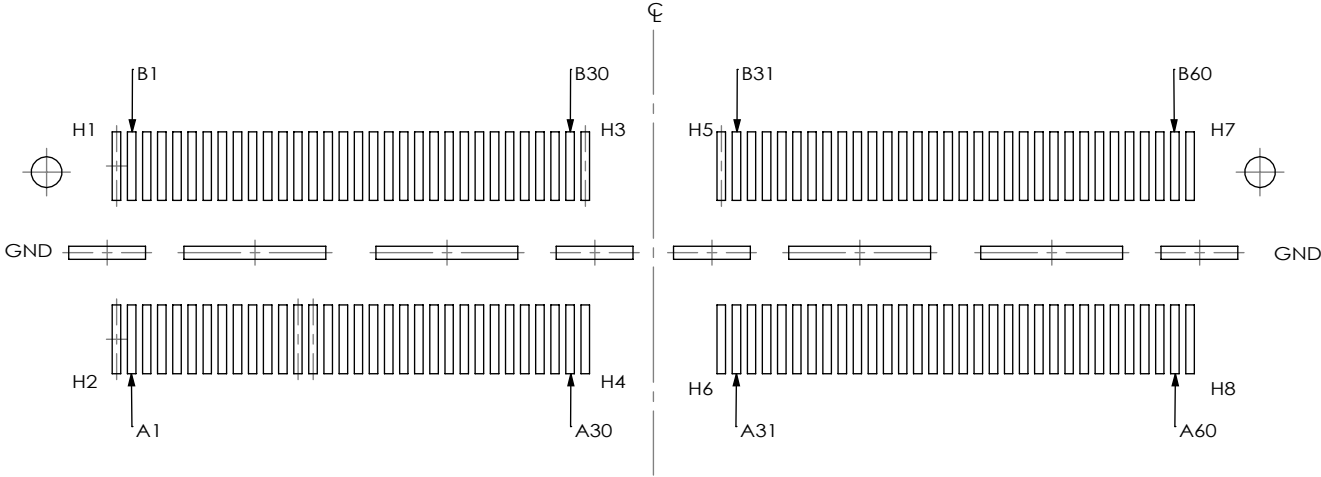
DWG. NO.

ASP-125516-03

BY: B. PERRY 1/8/2007

SHEET 2 OF 3

REFERENCE HAPSTRAK II FOOTPRINT



PROPRIETARY NOTE

THIS DOCUMENT CONTAINS INFORMATION  
CONFIDENTIAL AND PROPRIETARY TO  
SAMTEC, INC. AND SHALL NOT BE REPRODUCED  
OR TRANSFERRED TO OTHER DOCUMENTS OR  
DISCLOSED TO OTHERS OR USED FOR ANY  
PURPOSE OTHER THAN THAT WHICH IT WAS  
OBTAINED WITHOUT THE EXPRESSED WRITTEN  
CONSENT OF SAMTEC, INC.



520 PARK EAST BLVD, NEW ALBANY, IN 47150  
PHONE: 812-944-6733 FAX: 812-948-5047  
e-Mail: info@SAMTEC.com code: 55322

SHEET SCALE: 1:1

DESCRIPTION:  
MODIFIED QSH ASSEMBLY  
DWG. NO.

ASP-125516-03