

ASP-148424-01

REVISION

A	JB	J HENRY
6/19/2009	ECN-112227	RELEASE FOR PRODUCTION

B	LF	M BOONE
8/20/2009	ECN-115657	

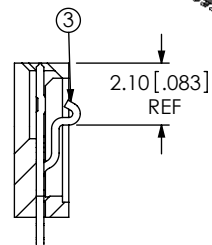
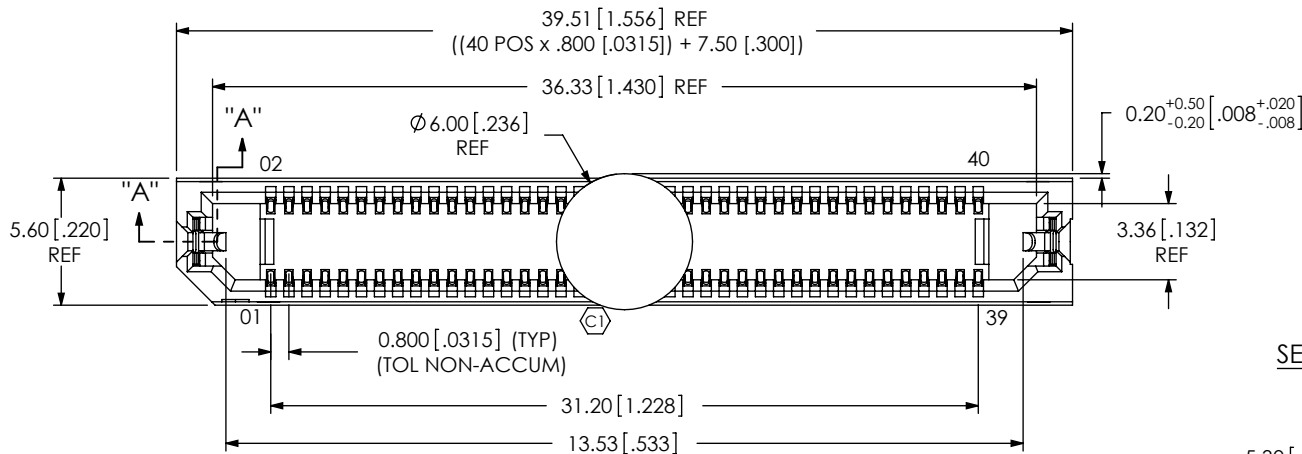
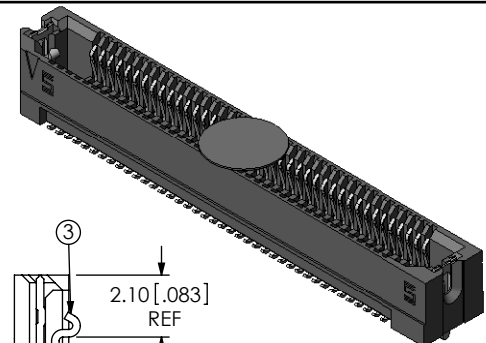
C	JB	Z Paden
3/2/2010	ECN-126246	

SHT 2, RECOMMENDED STENCIL LAYOUT: CHG Ø1.58 (2 PLCS) TO Ø2.24 (2 PLCS); RECOMMENDED PCB LAYOUT: DEL DIMS 6.03 & 5.30 (TYP); DEL NOTES "39" & "36"; ADD DIMS 31.20 & 1.80 (TYP); ADD NOTES "39" & "40"; CHG 5.61 TO 5.60, CHG Ø0.83±0.02 TO Ø0.83±0.05; ADD NOTE "TO BE SOLDERED USING PASTE-IN-HOLE TECHNOLOGY".

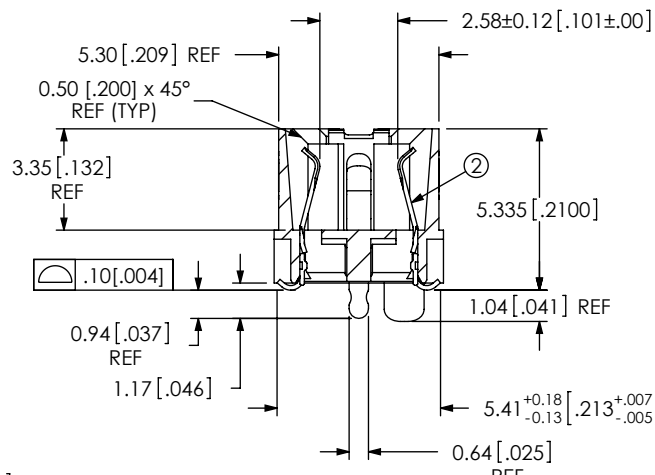
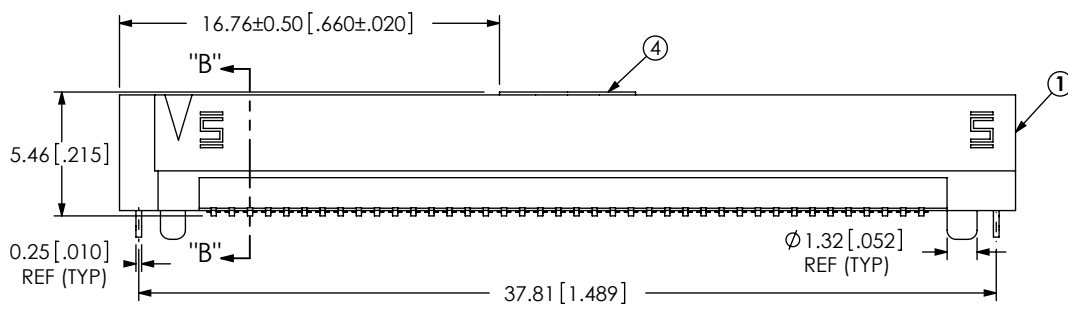
NOTES:

1. STANDARD PART SET UP AS ASP.
2. Ⓢ REPRESENTS A CRITICAL DIMENSION.
3. MAXIMUM BURR ALLOWANCE: .038 [.0015].
4. MINIMUM PUSHOUT FORCE: 2.22N [.5LB].
5. PARTS TO BE PACKAGED IN TAPE & REEL.

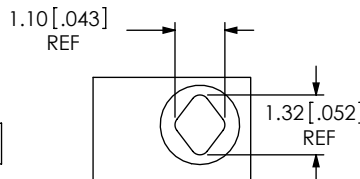
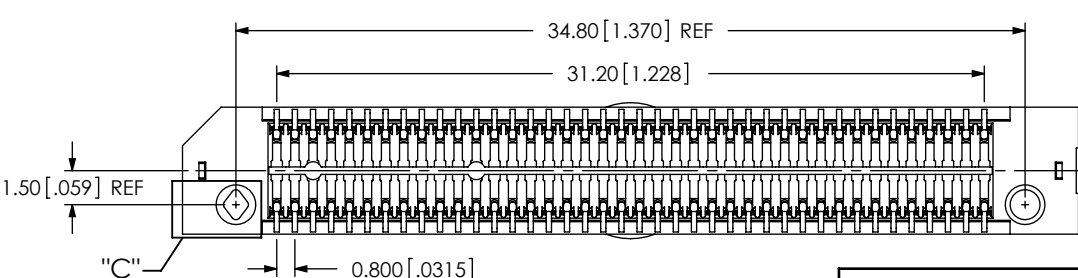
DESIGNED & DIMENSIONED IN MILLIMETERS [INCHES]



SECTION "A"- "A" SCALE 4 : 1



SECTION "B"- "B" SCALE 4 : 1



DETAIL "C" SCALE 6 : 1

ACCEPTANCE OF DRAWING  
 ACCEPTED WITH DEVIATIONS LISTED  
 DATE: \_\_\_\_\_  
 COMPANY: \_\_\_\_\_  
 CUSTOMER SIGNATURE \_\_\_\_\_  
 PRINTED NAME \_\_\_\_\_  
 PHONE No: \_\_\_\_\_  
 FAX No: \_\_\_\_\_

UNLESS OTHERWISE SPECIFIED, DIMENSIONS ARE IN MILLIMETERS. TOLERANCES ARE:  
 DECIMALS ANGLES  
 .X: ±.01 2°  
 .XX: ±.13 [.005]  
 .XXX: ±.051 [.0020]

PROPRIETARY NOTE  
 THIS DOCUMENT CONTAINS INFORMATION CONFIDENTIAL AND PROPRIETARY TO SAMTEC, INC. AND SHALL NOT BE REPRODUCED OR TRANSFERRED TO OTHER DOCUMENTS OR DISCLOSED TO OTHERS OR USED FOR ANY PURPOSE OTHER THAN THAT WHICH IT WAS OBTAINED WITHOUT THE EXPRESSED WRITTEN CONSENT OF SAMTEC, INC.



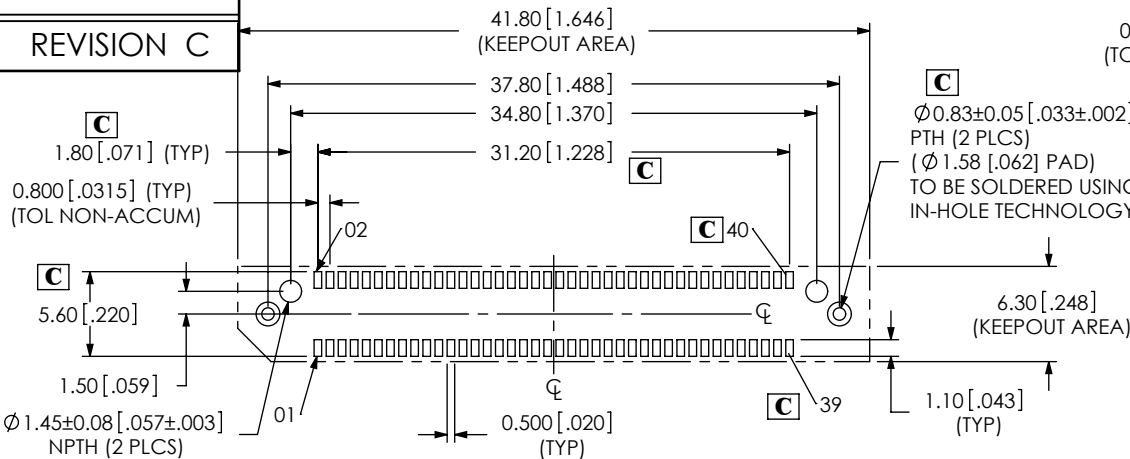
520 PARK EAST BLVD, NEW ALBANY, IN 47150  
 PHONE: 812-944-6733 FAX: 812-948-5047  
 e-Mail: info@SAMTEC.com code 53322

DO NOT SCALE DRAWING SHEET SCALE: 1:0.3333 DESCRIPTION:  
 PLATING: CONTACT AREA: .00030 MIN GOLD OVER .00050 MIN NICKEL  
 REMAINDER: .000200 REF TIN OVER .00050 MIN NICKEL  
 LATCHES: .000033 MIN GOLD OVER .00050 MIN NICKEL

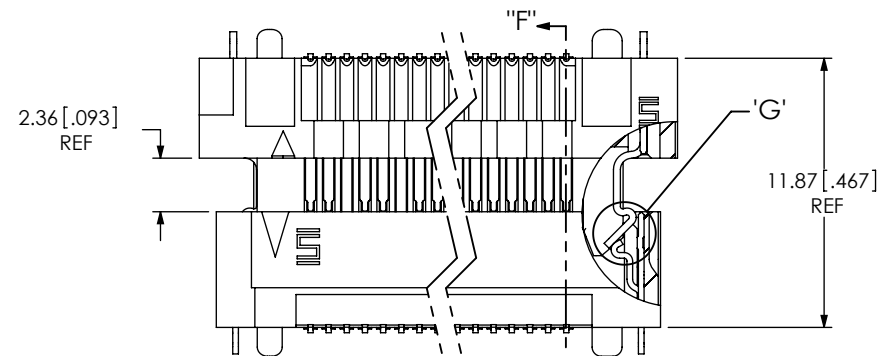
ERF8 ASSEMBLY
DWG. NO. ASP-148424-01
BY: J. BROWNING 06/19/2009 SHEET 1 OF 2

ITEM NO.	PART NUMBER	QUANTITY	MATERIAL
1	ERF8-040-05.0-DV-L	1.0000	VECTRA E130i, COLOR: BLACK
2	C-211-05.0-S	80.0000	BeCu, 390 HT
3	WT-30-01-F	2.0000	BeCu, #25, 1/2 HT
4	K-500-300	1.0000	POLYIMIDE FILM
5	CT-ERF8013MS	1.0000	CONDUCTIVE POLYMER

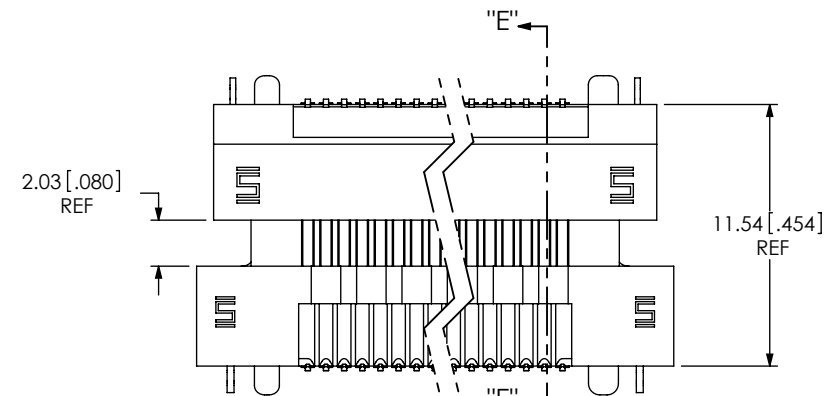
REVISION C



RECOMMENDED PCB LAYOUT



LATCH ENGAGING VIEW

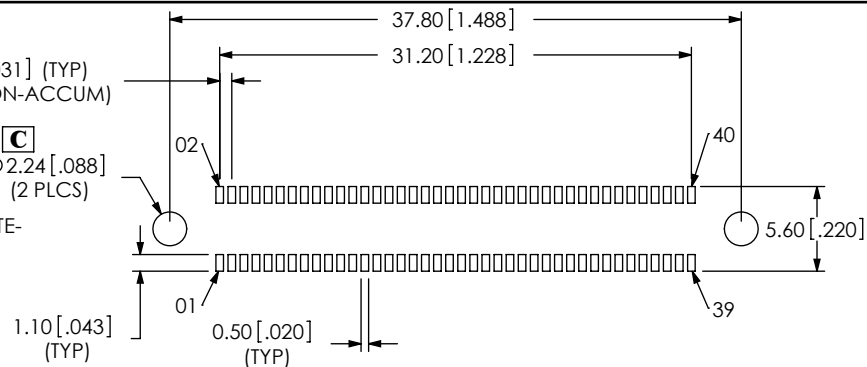


PIN ENGAGING VIEW

Ø0.83±0.05 [.033±.002] PTH (2 PLCS)  
 (Ø 1.58 [.062] PAD)  
 TO BE SOLDERED USING PASTE-IN-HOLE TECHNOLOGY

0.80 [.031] (TYP) (TOL. NON-ACCUM)

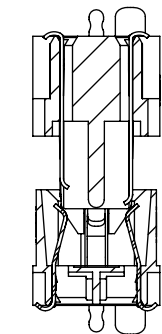
Ø2.24 [.088] (2 PLCS)



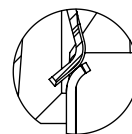
RECOMMENDED STENCIL LAYOUT



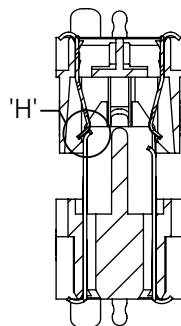
DETAIL 'G'  
 SCALE 6 : 1



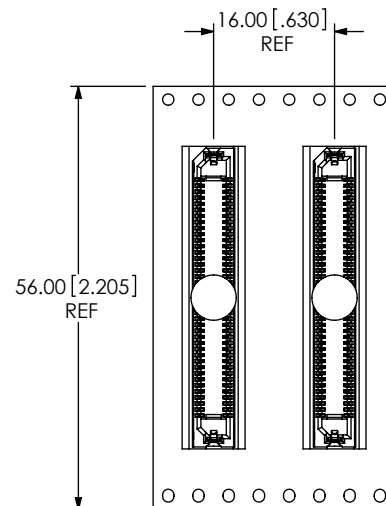
SECTION "F"-"F"



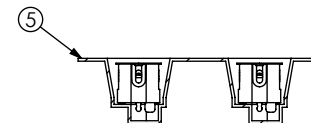
DETAIL 'H'  
 SCALE 8 : 1



SECTION "E"-"E"



USER DIRECTION OF UN-REELING POCKET NOT DETAILED



PACKAGING VIEW

PROPRIETARY NOTE

THIS DOCUMENT CONTAINS INFORMATION CONFIDENTIAL AND PROPRIETARY TO SAMTEC, INC. AND SHALL NOT BE REPRODUCED OR TRANSFERRED TO OTHER DOCUMENTS OR DISCLOSED TO OTHERS OR USED FOR ANY PURPOSE OTHER THAN THAT WHICH IT WAS OBTAINED WITHOUT THE EXPRESSED WRITTEN CONSENT OF SAMTEC, INC.

**samtec**

520 PARK EAST BLVD, NEW ALBANY, IN 47150  
 PHONE: 812-944-6733 FAX: 812-948-5047  
 e-Mail info@SAMTEC.com code 53322

SHEET SCALE: 3:1

DESCRIPTION: ERF8 ASSEMBLY

DWG. NO. ASP-148424-01

BY: J. BROWNING 06/19/2009 SHEET 2 OF 2