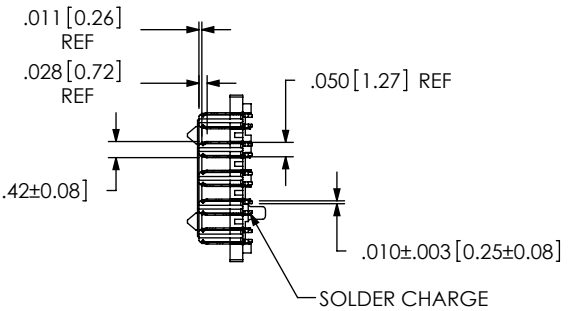
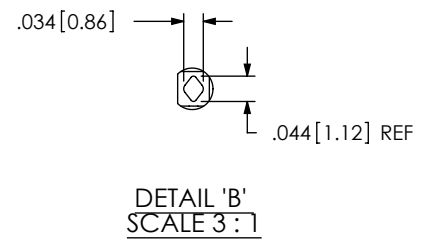
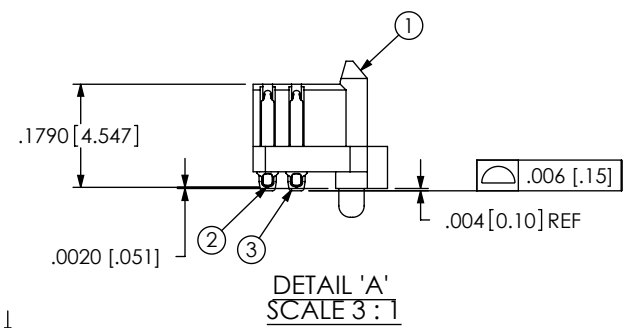
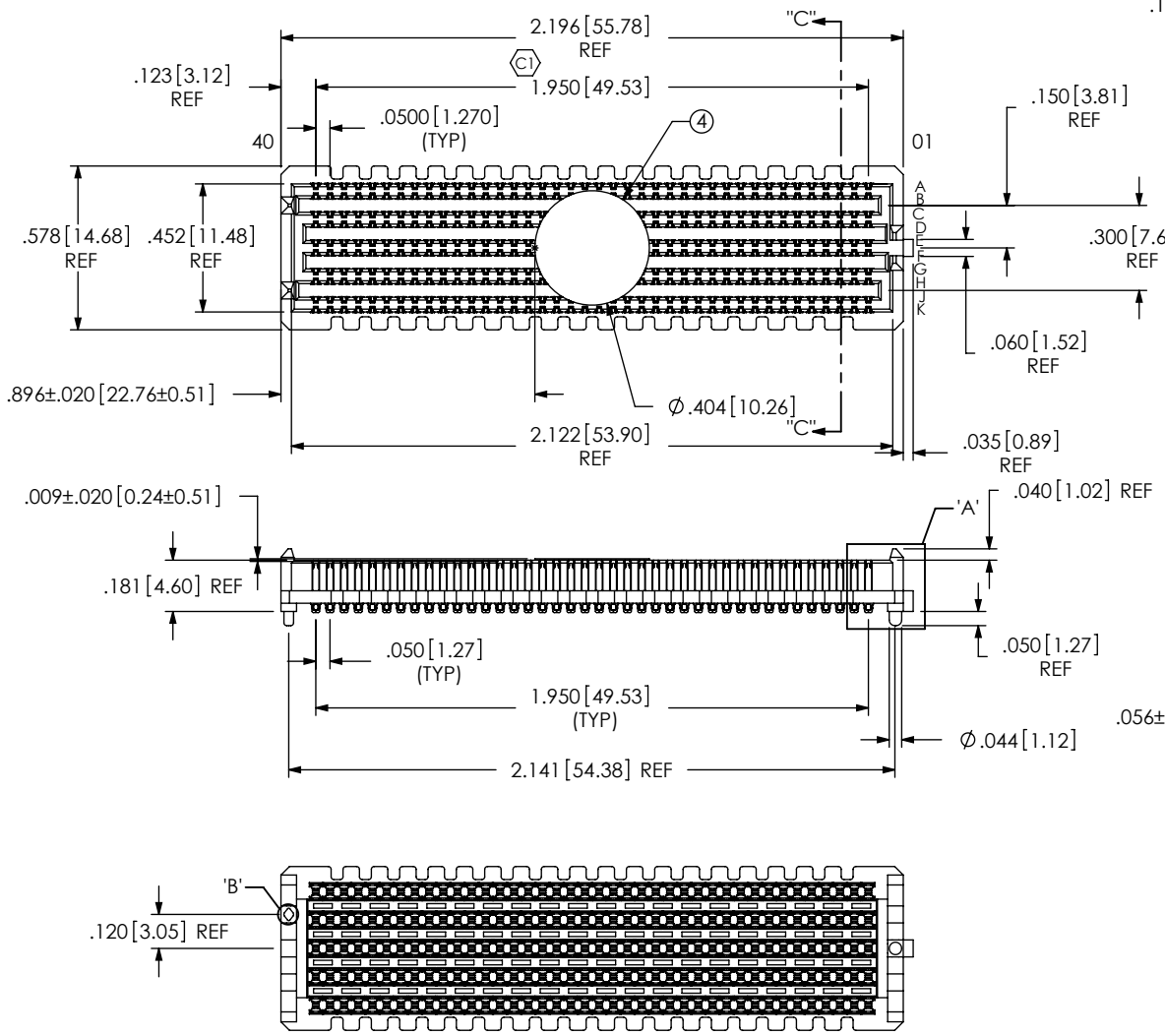


REVISION

A	GP	R SKEES
10/31/2007	ECN-82549	
RELEASE FOR PRODUCTION.		
B	DS	M HAMMAN
5/29/2008	ECN-91932	
ADD FOOTPRINT SHEETS 2 & 3		
C	TW	J HENRY
12/18/2008	ECN-102645	
NOTES: CHG NOTE 4 FROM "TRAY" TO "TAPE & REEL" PACKAGING; BOM; ADD ITEM 4, CHG ITEM 5 FROM: "TRAY-SEAM015-40-2-10-AP-T" TO "CT-SEAM032MS"; SHEETS 1, 2 & 3, ADD PINOUTS FOR ROWS & POSITIONS; ADD SHEET 4 FOR PACKAGING VIEW		
D	DS	J HENRY
3/4/2009	ECN-106494	
DETAIL 'A': ADD: .1790		
E	GP	M BOONE
11/25/2009	ECN-120843	
B.O.M. ITEM 3, MATERIAL DESCRIPTION: CHG "SOLDER 95.5% TIN/3.8% SILVER 7% COPPER" TO "SOLDER (63% TIN/37% LEAD)";		

- NOTES:
 1. VITA 57 CONNECTOR.
 2. (C) REPRESENTS A CRITICAL DIMENSION.
 3. MINIMUM PUSHOUT FORCE: .75 LB.
 4. PARTS TO BE PACKAGED IN TAPE AND REEL.



SECTION "C"-"C"

ITEM NO.	PART NUMBER	QUANTITY	MATERIAL
1	SEAM-40-02.0-10-A	1.0000	VECTRA E130i, COLOR: BLACK
2	T-1M36-02.0-S	400.00	BRUSH ALLOY 390 HT
3	STD-645-012-01	400.00	[E] SOLDER (63% TIN/37% LEAD)
4	K-DOT-.404-.505-.005	1.0000	POLYIMIDE FILM (KAPTON)
4	CT-SEAM032MS	1.0000	POLYIMIDE FILM (KAPTON)

UNLESS OTHERWISE SPECIFIED, DIMENSIONS ARE IN INCHES.
 TOLERANCES ARE:
 DECIMALS ANGLES
 .XX: $\pm .01 [0.3]$ 2°
 .XXX: $\pm .005 [0.13]$
 .XXXX: $\pm .0020 [0.051]$

PROPRIETARY NOTE
 THIS DOCUMENT CONTAINS INFORMATION CONFIDENTIAL AND PROPRIETARY TO SAMTEC, INC. AND SHALL NOT BE REPRODUCED OR TRANSFERRED TO OTHER DOCUMENTS OR DISCLOSED TO OTHERS OR USED FOR ANY PURPOSE OTHER THAN THAT WHICH IT WAS OBTAINED WITHOUT THE EXPRESSED WRITTEN CONSENT OF SAMTEC, INC.

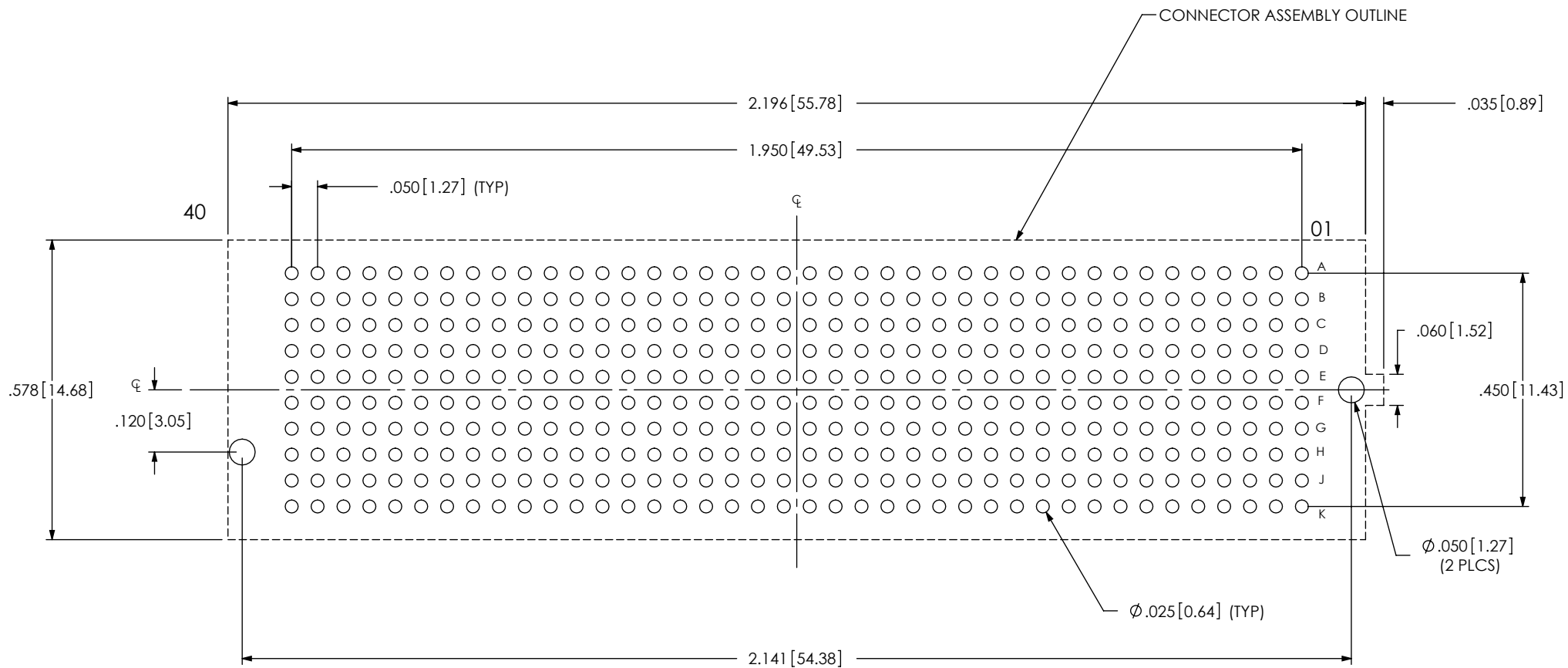
PLATING: DO NOT SCALE DRAWING SHEET SCALE: 1:0.666667
 CONTACT AREA: .000030 GOLD OVER .000050 NICKEL
 REMAINDER: .000200 REF TIN OVER .000050 NICKEL
 SOLDER COMPOSITION: 63% TIN/LEAD CHARGE TAIL

520 PARK EAST BLVD., NEW ALBANY, IN 47150
 PHONE: 812-944-6733 FAX: 812-948-5047
 e-Mail: info@SAMTEC.com code: 55322

DESCRIPTION:
 .050 PITCH TERMINAL ARRAY ASSEMBLY

DWG. NO.
ASP-134601-01

BY: G. PURVIS 10/31/2007 SHEET 1 OF 4



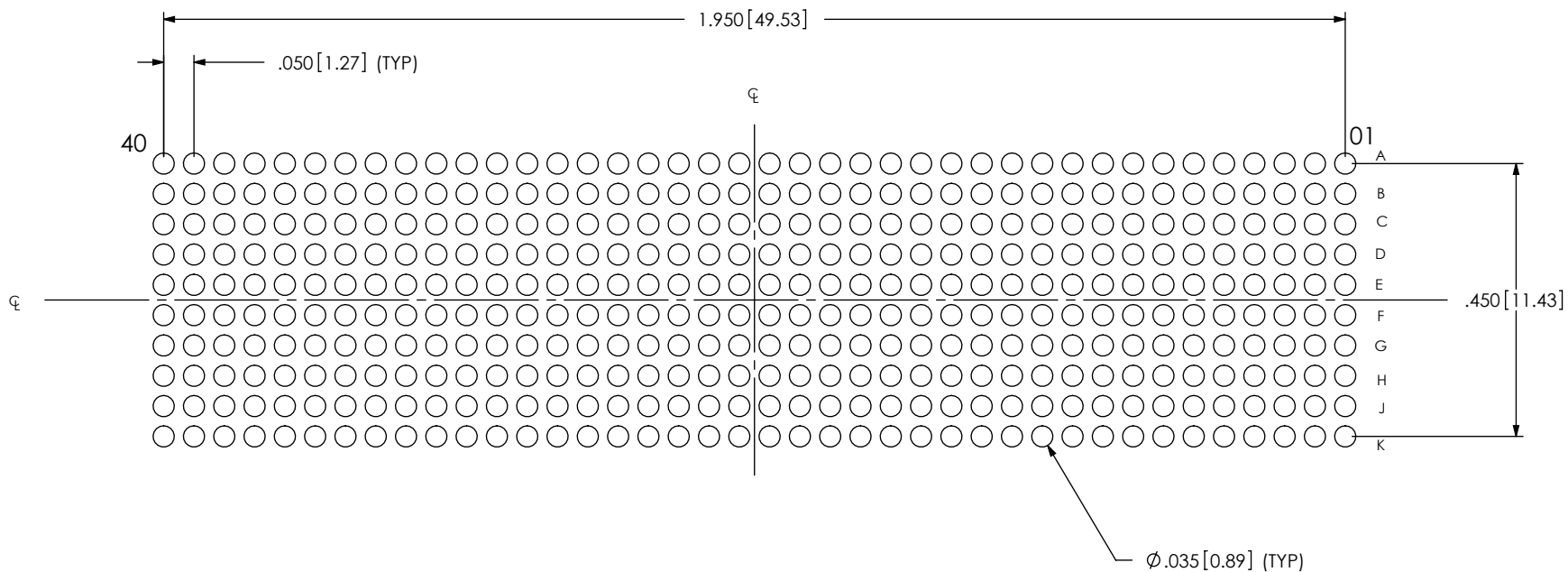
ALL DIMENSIONS ARE SYMMETRIC ABOUT CENTERLINE

PROPRIETARY NOTE
 THIS DOCUMENT CONTAINS INFORMATION
 CONFIDENTIAL AND PROPRIETARY TO
 SAMTEC, INC. AND SHALL NOT BE REPRODUCED
 OR TRANSFERRED TO OTHER DOCUMENTS OR
 DISCLOSED TO OTHERS OR USED FOR ANY
 PURPOSE OTHER THAN THAT WHICH IT WAS
 OBTAINED WITHOUT THE EXPRESSED WRITTEN
 CONSENT OF SAMTEC, INC.



520 PARK EAST BLVD, NEW ALBANY, IN 47150
 PHONE: 812-944-6733 FAX: 812-948-5047
 e-Mail: info@SAMTEC.com code: 55322

STENCIL THICKNESS TO BE .0060[0.152]

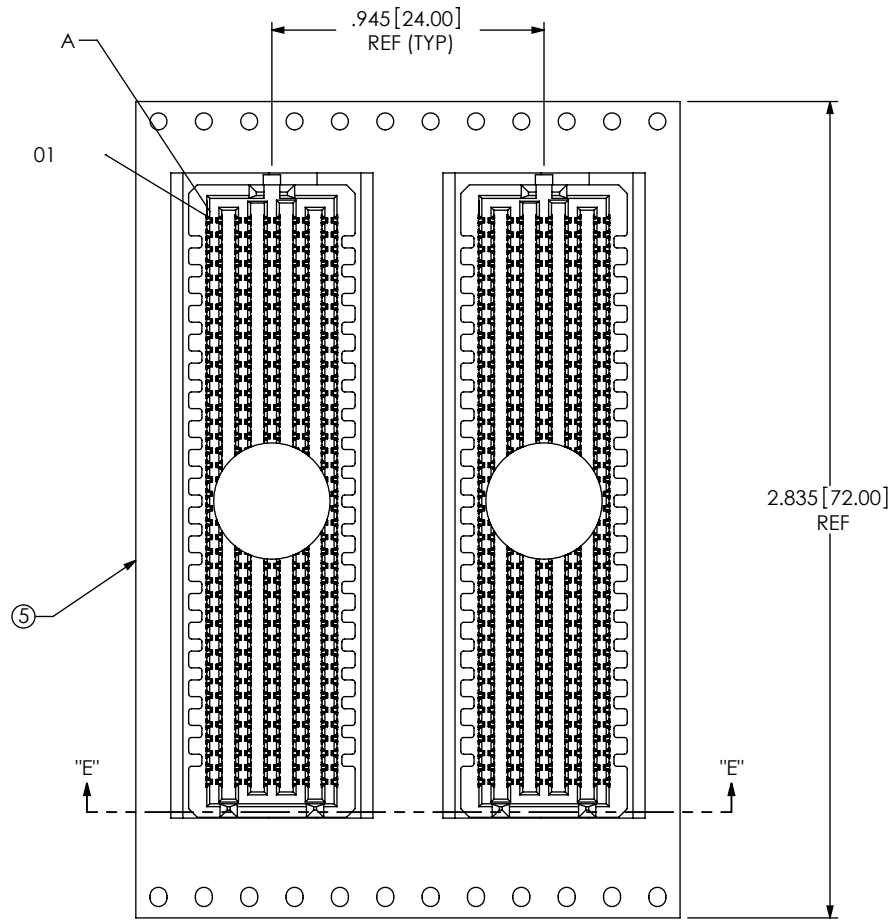


ALL DIMENSIONS ARE SYMMETRIC ABOUT CENTERLINE

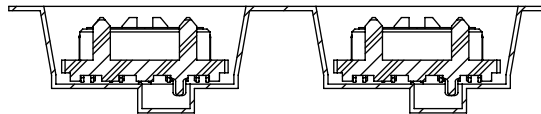
PROPRIETARY NOTE
 THIS DOCUMENT CONTAINS INFORMATION
 CONFIDENTIAL AND PROPRIETARY TO
 SAMTEC, INC. AND SHALL NOT BE REPRODUCED
 OR TRANSFERRED TO OTHER DOCUMENTS OR
 DISCLOSED TO OTHERS OR USED FOR ANY
 PURPOSE OTHER THAN THAT WHICH IT WAS
 OBTAINED WITHOUT THE EXPRESSED WRITTEN
 CONSENT OF SAMTEC, INC.



520 PARK EAST BLVD, NEW ALBANY, IN 47150
 PHONE: 812-944-6733 FAX: 812-948-5047
 e-Mail: info@SAMTEC.com code: 55322



USER DIRECTION OF UN-REELING
POCKET NOT DETAILED →



SECTION "E"-"E"
PACKAGING VIEW

PROPRIETARY NOTE

THIS DOCUMENT CONTAINS INFORMATION
CONFIDENTIAL AND PROPRIETARY TO
SAMTEC, INC. AND SHALL NOT BE REPRODUCED
OR TRANSFERRED TO OTHER DOCUMENTS OR
DISCLOSED TO OTHERS OR USED FOR ANY
PURPOSE OTHER THAN THAT WHICH IT WAS
OBTAINED WITHOUT THE EXPRESSED WRITTEN
CONSENT OF SAMTEC, INC.



520 PARK EAST BLVD, NEW ALBANY, IN 47150
PHONE: 812-944-6733 FAX: 812-948-5047
e-Mail: info@SAMTEC.com code: 55322

SHEET SCALE: 1.5:1

DESCRIPTION:
.050 PITCH TERMINAL ARRAY ASSEMBLY

DWG. NO.
ASP-134601-01

BY: G. PURVIS 10/31/2007 SHEET 4 OF 4