

REVISION

A	GP	R SKEES
11/2/2007	ECN-82643	

B	DS	M HAMMAN
5/30/2008	ECN-91958	

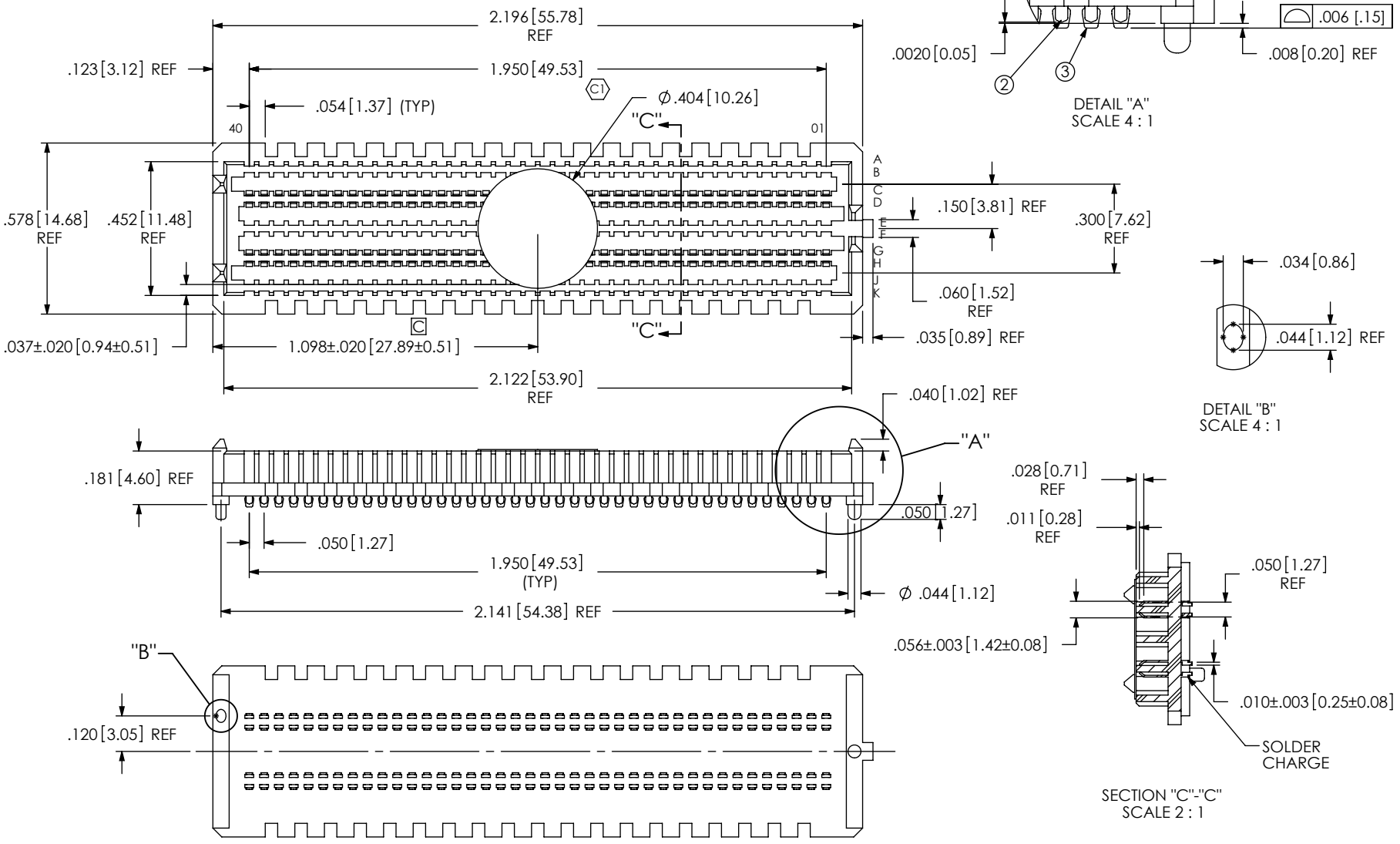
C	TP	J HENRY
12/18/2008	ECN-102678	

NOTES: CHG NOTE 4 FROM FROM TRAY TO TAPE & REEL. UPDATE BOM FROM TRAY-SEAM015-40-2-10-AP-T TO CT-SEAM032MS ADD T&R VIEW; SHEET 4, TOP VIEW SHEET 1, RECOMMENDED PCB LAYOUT SHEET 2 & RECOMMENDED STENCIL SHEET 3, ADD VITA SPEC PINOUTS TO THESE VIEWS, ROWS A THRU K, AND POSITIONS: 01-40, ADD K-DOT-.404-.500-.005 TO BOM & ALL VIEWS

D	GP	M BOONE
11/30/2009	ECN-120954	

PAGE TWO PCB LAYOUT SHOW ONLY ROWS 3, 4, 7, AND 8. PAGE THREE STENCIL LAYOUT SHOW ONLY ROWS 3, 4, 7, AND 8.

- NOTES:
 1. VITA 57 CONNECTOR.
 2. FILL 3, 4, 7 & 8 ROWS ONLY.
 3. Ⓢ REPRESENTS A CRITICAL DIMENSION.
 4. MINIMUM PUSHOUT FORCE: .75 LB.
 5. PARTS TO BE PACKAGED IN TAPE & REEL.



ITEM NO.	PART NUMBER	QUANTITY	MATERIAL
1	SEAM-40-02.0-10-A	1.0000	VECTRA E130i; COLOR: BLACK
2	T-1M36-02.0-S	160.00	BRUSH ALLOY 390HT
3	SDT-645-012-02	160.00	SOLDER 95.5% TIN 3.8% SOLVER 7% COPPER
4	K-DOT-.404-.500-.005	1.0000	POLYIMIDE FILM
5	CT-SEAM032MS	1.0000	CONDUCTIVE POLYMER

UNLESS OTHERWISE SPECIFIED, DIMENSIONS ARE IN INCHES. TOLERANCES ARE:
 DECIMALS ANGLES
 .XX: ±.01[.3] 2°
 .XXX: ±.005[.13]
 .XXXX: ±.0020[.051]

PROPRIETARY NOTE
 THIS DOCUMENT CONTAINS INFORMATION CONFIDENTIAL AND PROPRIETARY TO SAMTEC, INC. AND SHALL NOT BE REPRODUCED OR TRANSFERRED TO OTHER DOCUMENTS OR DISCLOSED TO OTHERS OR USED FOR ANY PURPOSE OTHER THAN THAT WHICH IT WAS OBTAINED WITHOUT THE EXPRESSED WRITTEN CONSENT OF SAMTEC, INC.

DO NOT SCALE DRAWING SHEET SCALE: 1:75:1

PLATING:
 CONTACT AREA: .000030 GOLD OVER .000050 NICKEL
 REMAINDER: .000200 REF TIN OVER .000050 NICKEL
 SOLDER COMPOSITION: 95.5% TIN/3.8% SILVER/7% COPPER CHARGE TAIL

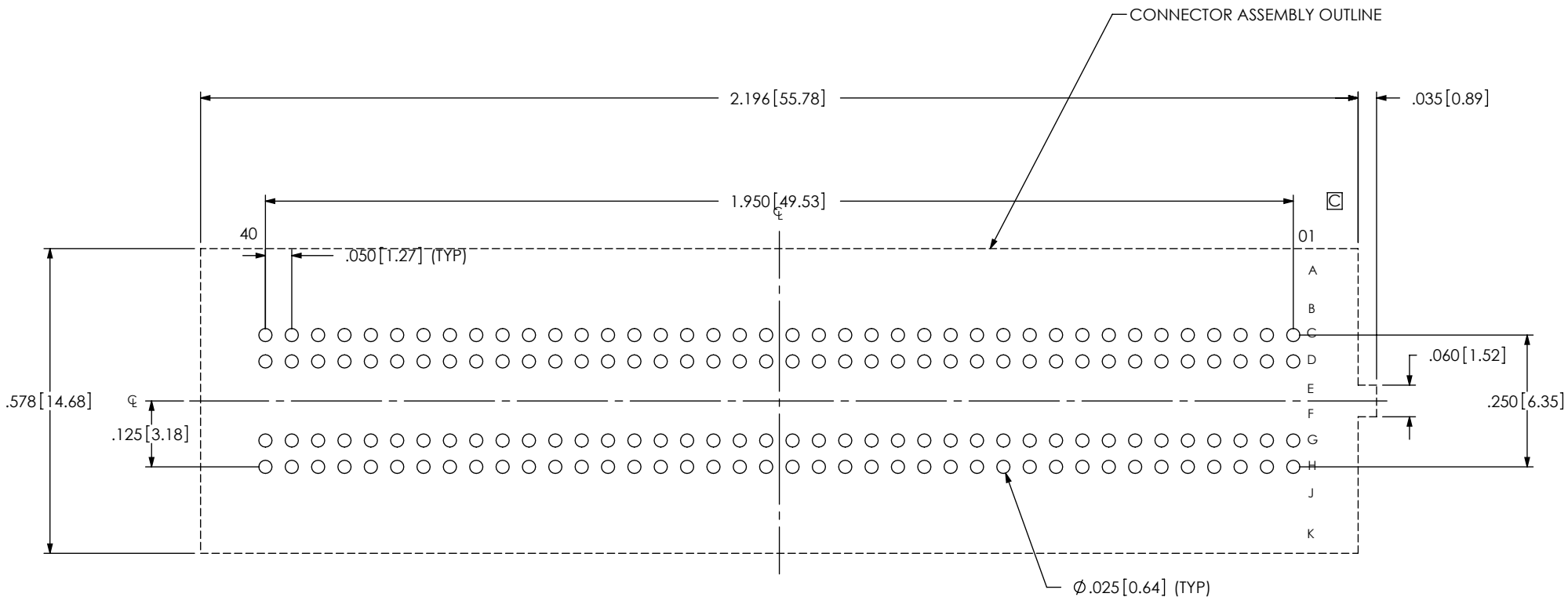
F:\d\wg\sw\asp\134000\ASP-134606-01.SLDDRW

520 PARK EAST BLVD, NEW ALBANY, IN 47150
 PHONE: 812-944-6733 FAX: 812-948-5047
 e-Mail: info@SAMTEC.com code: 55322

DESCRIPTION: .050 TERMINAL ARRAY ASSEMBLY

DWG. NO. ASP-134606-01

BY: G. PURVIS 11/02/2007 SHEET 1 OF 4



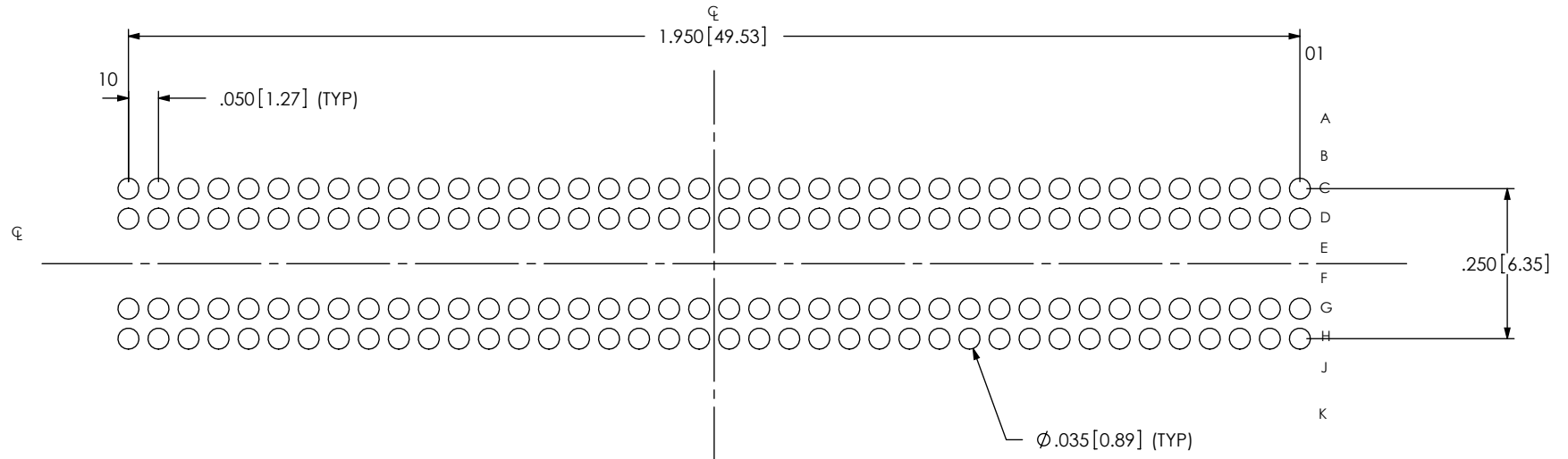
□
ALL DIMENSIONS ARE SYMMETRIC ABOUT CENTERLINE

PROPRIETARY NOTE
THIS DOCUMENT CONTAINS INFORMATION
CONFIDENTIAL AND PROPRIETARY TO
SAMTEC, INC. AND SHALL NOT BE REPRODUCED
OR TRANSFERRED TO OTHER DOCUMENTS OR
DISCLOSED TO OTHERS OR USED FOR ANY
PURPOSE OTHER THAN THAT WHICH IT WAS
OBTAINED WITHOUT THE EXPRESSED WRITTEN
CONSENT OF SAMTEC, INC.



520 PARK EAST BLVD, NEW ALBANY, IN 47150
PHONE: 812-944-6733 FAX: 812-948-5047
e-Mail: info@SAMTEC.com code: 55322

STENCIL THICKNESS TO BE .0060[0.152]

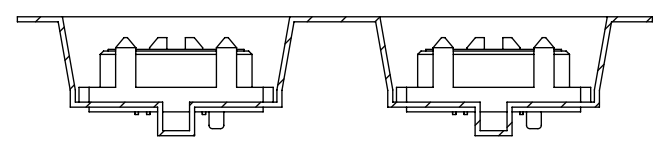
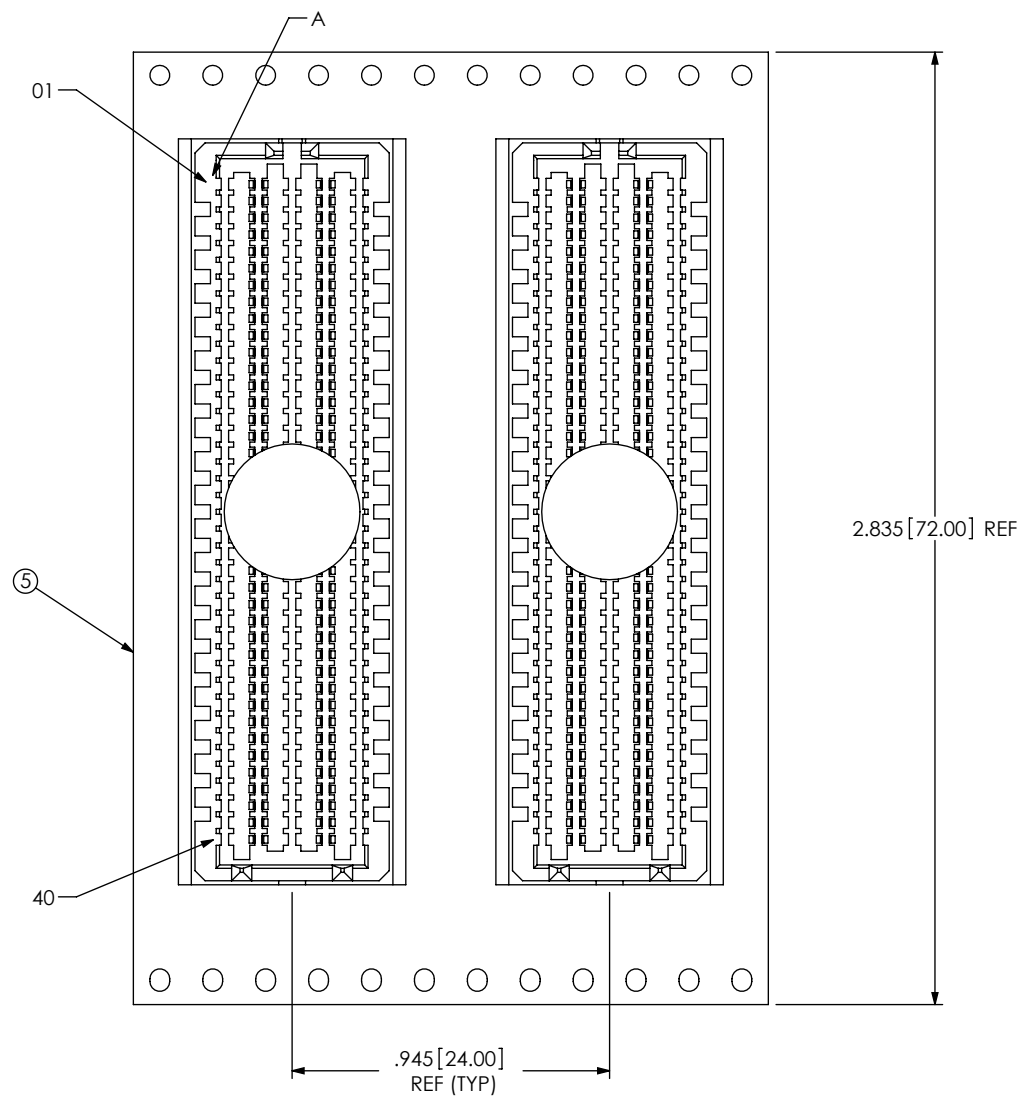


□
ALL DIMENSIONS ARE SYMMETRIC ABOUT CENTERLINE

PROPRIETARY NOTE
 THIS DOCUMENT CONTAINS INFORMATION
 CONFIDENTIAL AND PROPRIETARY TO
 SAMTEC, INC. AND SHALL NOT BE REPRODUCED
 OR TRANSFERRED TO OTHER DOCUMENTS OR
 DISCLOSED TO OTHERS OR USED FOR ANY
 PURPOSE OTHER THAN THAT WHICH IT WAS
 OBTAINED WITHOUT THE EXPRESSED WRITTEN
 CONSENT OF SAMTEC, INC.



520 PARK EAST BLVD, NEW ALBANY, IN 47150
 PHONE: 812-944-6733 FAX: 812-948-5047
 e-Mail: info@SAMTEC.com code: 55322



USER DIRECTION OF UNREELING →
POCKET NOT DETAILED

PACKAGING VIEW

PROPRIETARY NOTE
THIS DOCUMENT CONTAINS INFORMATION
CONFIDENTIAL AND PROPRIETARY TO
SAMTEC, INC. AND SHALL NOT BE REPRODUCED
OR TRANSFERRED TO OTHER DOCUMENTS OR
DISCLOSED TO OTHERS OR USED FOR ANY
PURPOSE OTHER THAN THAT WHICH IT WAS
OBTAINED WITHOUT THE EXPRESSED WRITTEN
CONSENT OF SAMTEC, INC.

samtec
520 PARK EAST BLVD, NEW ALBANY, IN 47150
PHONE: 812-944-6733 FAX: 812-948-5047
e-Mail: info@SAMTEC.com code: 55322