

REVISION

A	GP	R SKEES
11/9/2007	ECN-82936	RELEASE FOR PRODUCTION.
B	DS	M HAMMAN
5/30/2008	ECN-91991	
ADD FOOTPRINT SHEETS 2 & 3		
C	TP	J HENRY
12/16/2008	ECN-102547	
NOTES, CHG NOTE 4 FROM FROM TRAY TO TAPE & REEL, UPDATE BOM FROM TRAY-SEAF019-40-6.5-10-AP TO CT-SEAF028MS, TOP VIEW SHEET 1, RECOMMENDED PCB LAYOUT SHEET 2 & RECOMMENDED STENCIL SHEET 3, ADD VITA SPEC PINOUTS TO THESE VIEWS, ROWS A THRU K, AND POSITIONS 01-40, ADD K-DOT-.404-.500-.005 TO BOM & ALL VIEWS		

DATE: \_\_\_\_\_

COMPANY: \_\_\_\_\_

CUSTOMER SIGNATURE: \_\_\_\_\_

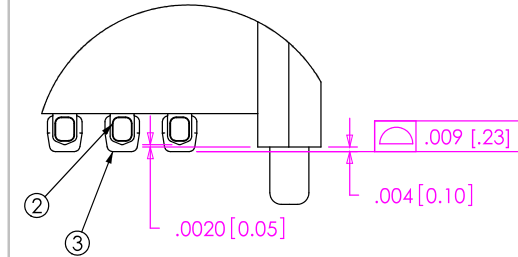
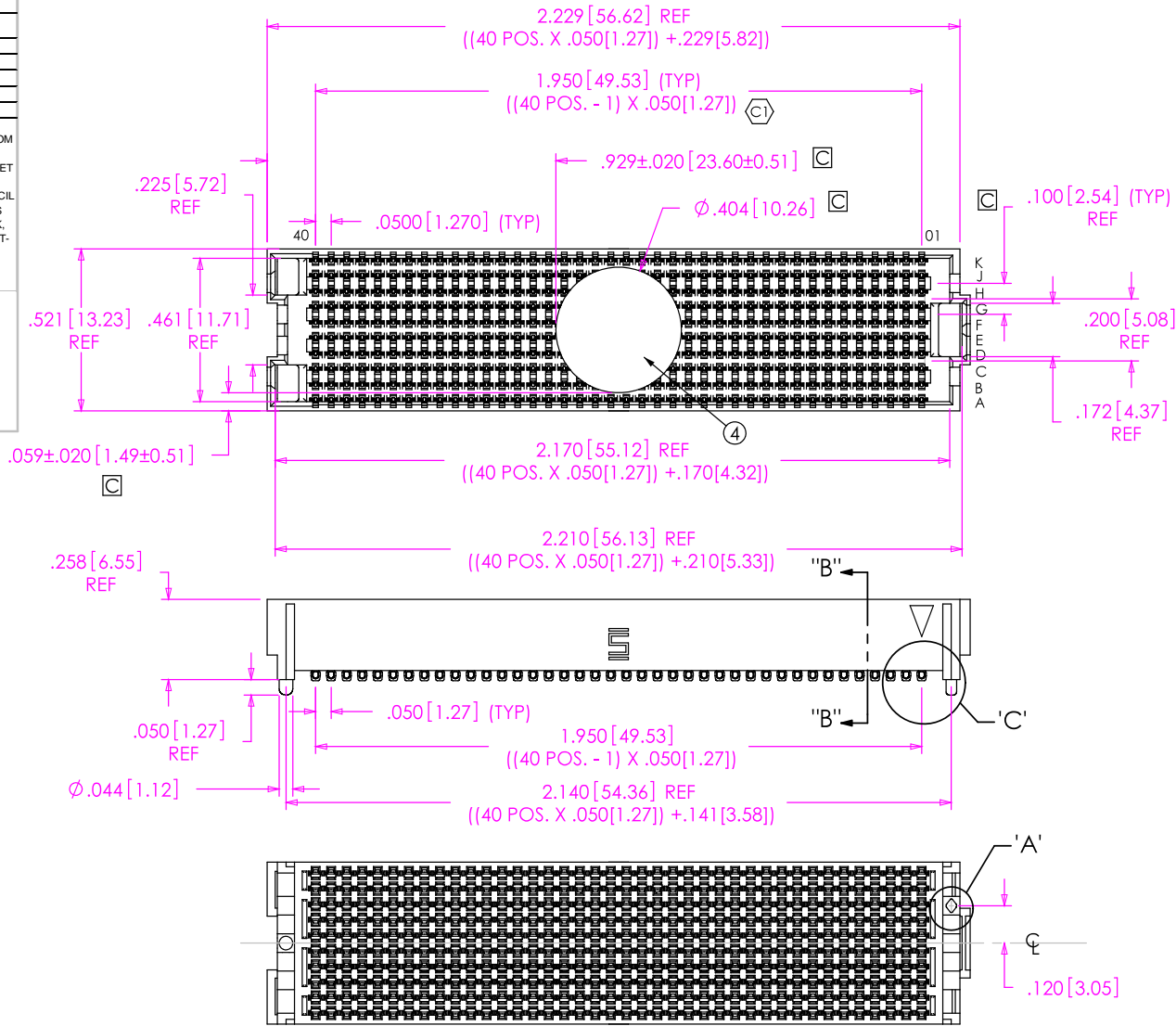
PRINTED NAME: \_\_\_\_\_

PHONE No: \_\_\_\_\_

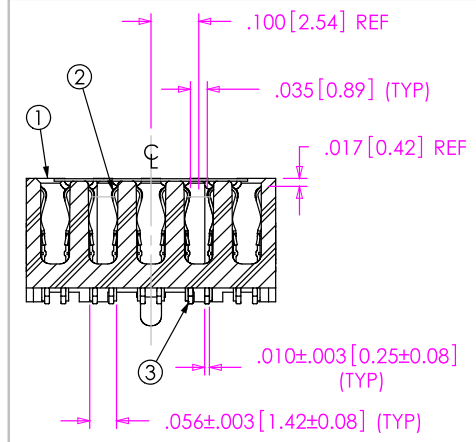
FAX No: \_\_\_\_\_

ACCEPTANCE OF DRAWING ACCEPTED WITH DEVIATIONS LISTED

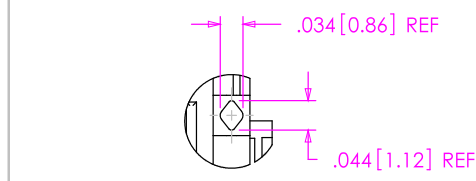
- NOTES:
1. VITA 57 CONNECTOR.
  2. Ⓢ REPRESENTS A CRITICAL DIMENSION.
  3. MINIMUM PUSHOUT FORCE: .75 LB.
  4. PARTS TO BE PACKAGED IN TAPE & REEL. Ⓢ



DETAIL 'C'  
SCALE 6:1



SECTION "B"-"B"  
SCALE 2.5:1



DETAIL 'A'  
SCALE 3.5:1

ITEM NO.	PART NUMBER	QUANTITY	MATERIAL
1	SEAF-40-06.5-10-A	1.0000	VECTRA 473i, COLOR: BLACK
2	C-209-06.5-S	400.00	BRUSH ALLOY 390 HT
3	SDT-645-012-02	400.00	SOLDER 95.5% TIN/3.8% SILVER 7% COPPER
4	K-DOT-.404-.500-.005	1.0000	POLYIMIDE FILM
5	CT-SEAF028MS	1.0000	CONDUCTIVE POLYMER

UNLESS OTHERWISE SPECIFIED, DIMENSIONS ARE IN INCHES. TOLERANCES ARE:

DECIMALS: .XX: ±.01[.3], .XXX: ±.005[.13], .XXXX: ±.0020[.051]

ANGLES: 2°

PROPRIETARY NOTE: THIS DOCUMENT CONTAINS INFORMATION CONFIDENTIAL AND PROPRIETARY TO SAMTEC, INC. AND SHALL NOT BE REPRODUCED OR TRANSFERRED TO OTHER DOCUMENTS OR DISCLOSED TO OTHERS OR USED FOR ANY PURPOSE OTHER THAN THAT WHICH IT WAS OBTAINED WITHOUT THE EXPRESSED WRITTEN CONSENT OF SAMTEC, INC.

DO NOT SCALE DRAWING SHEET SCALE: 1:0.3333

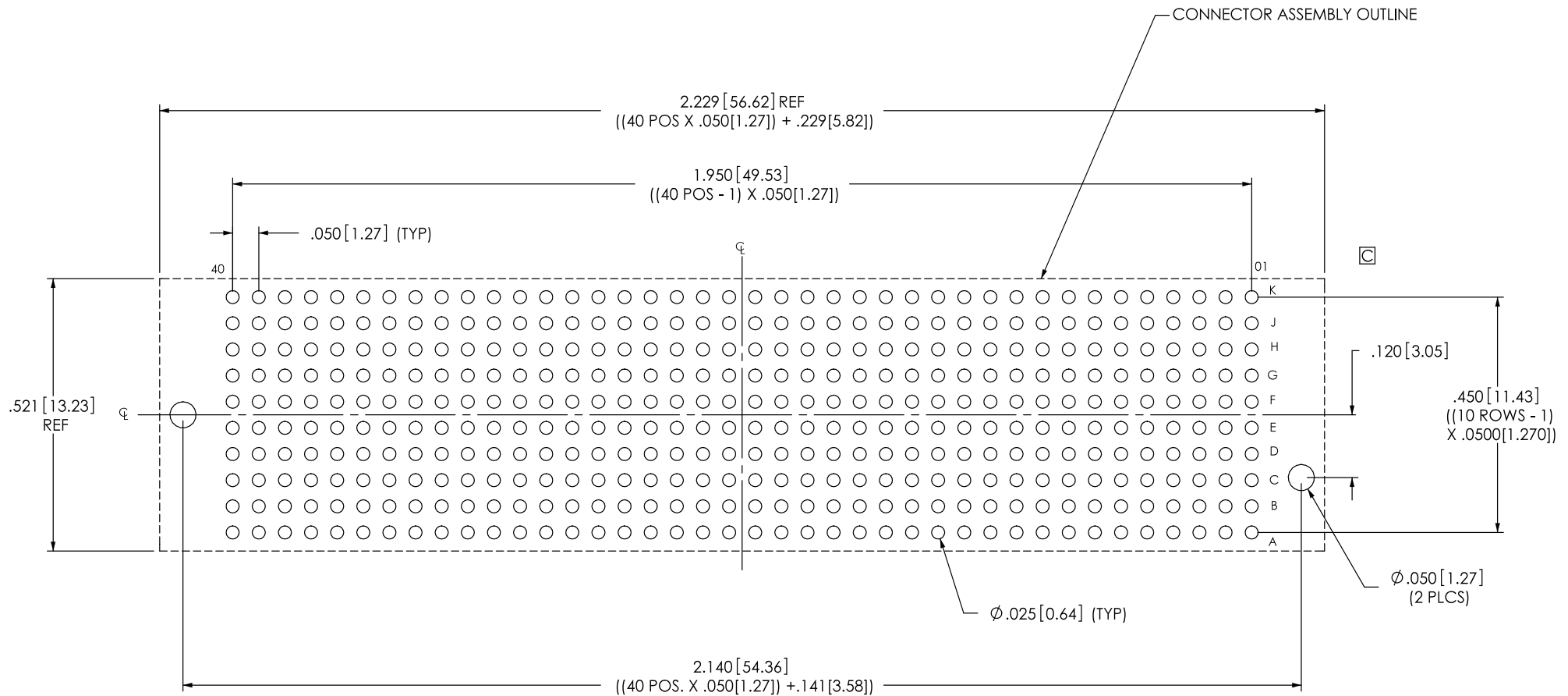
PLATING: CONTACT AREA: .000030 GOLD OVER .000050 NICKEL  
REMAINDER: .000200 REF TIN OVER .000050 NICKEL

520 PARK EAST BLVD, NEW ALBANY, IN 47150  
PHONE: 812-944-6733 FAX: 812-948-5047  
e-Mail: info@SAMTEC.com code: 55322

DESCRIPTION:  
.050 PITCH SOCKET ARRAY ASSEMBLY

DWG. NO. ASP-134486-01

BY: G. PURVIS 11/9/2007 SHEET 1 OF 4



ALL DIMENSIONS ARE SYMMETRIC ABOUT THE CENTERLINE.

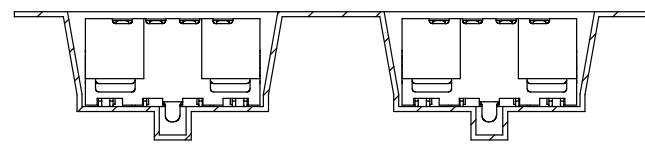
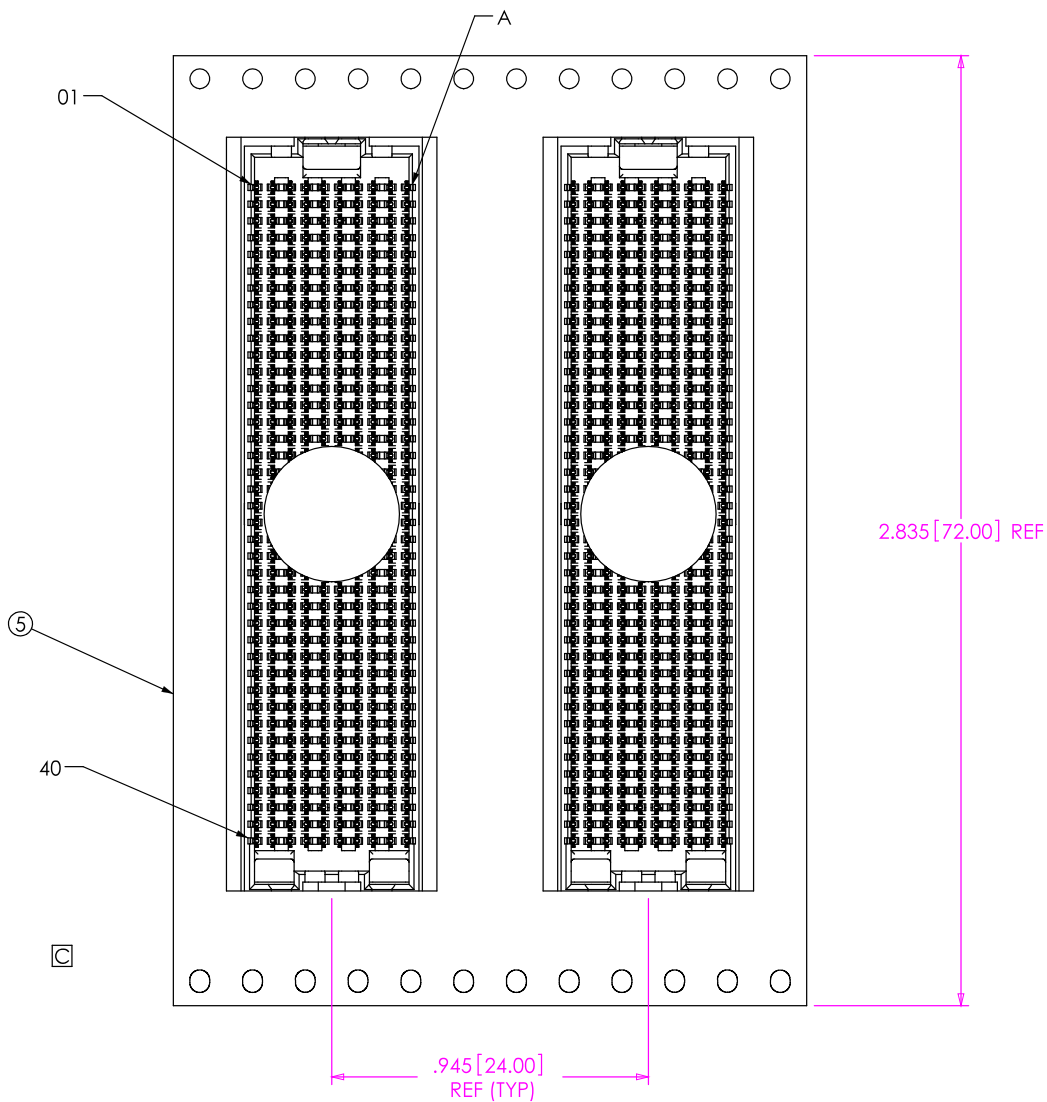
PROPRIETARY NOTE

THIS DOCUMENT CONTAINS INFORMATION CONFIDENTIAL AND PROPRIETARY TO SAMTEC, INC. AND SHALL NOT BE REPRODUCED OR TRANSFERRED TO OTHER DOCUMENTS OR DISCLOSED TO OTHERS OR USED FOR ANY PURPOSE OTHER THAN THAT WHICH IT WAS OBTAINED WITHOUT THE EXPRESSED WRITTEN CONSENT OF SAMTEC, INC.



520 PARK EAST BLVD, NEW ALBANY, IN 47150  
 PHONE: 812-944-6733 FAX: 812-948-5047  
 e-Mail: info@SAMTEC.com code: 55322





USER DIRECTION OF UNREELING →  
POCKET NOT DETAILED

PACKAGING VIEW

**PROPRIETARY NOTE**  
THIS DOCUMENT CONTAINS INFORMATION  
CONFIDENTIAL AND PROPRIETARY TO  
SAMTEC, INC. AND SHALL NOT BE REPRODUCED  
OR TRANSFERRED TO OTHER DOCUMENTS OR  
DISCLOSED TO OTHERS OR USED FOR ANY  
PURPOSE OTHER THAN THAT WHICH IT WAS  
OBTAINED WITHOUT THE EXPRESSED WRITTEN  
CONSENT OF SAMTEC, INC.



520 PARK EAST BLVD, NEW ALBANY, IN 47150  
PHONE: 812-944-6733 FAX: 812-948-5047  
e-Mail: info@SAMTEC.com code: 55322