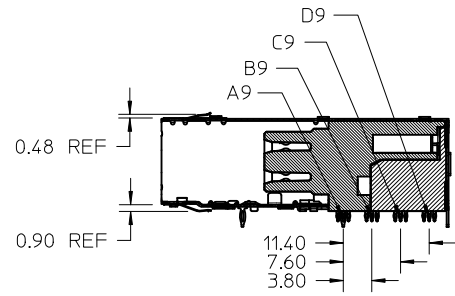
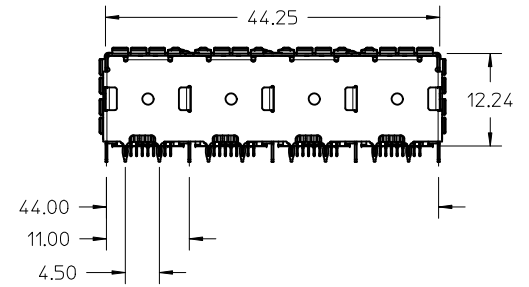
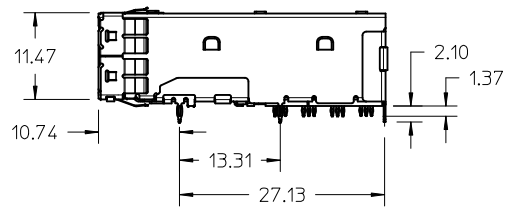
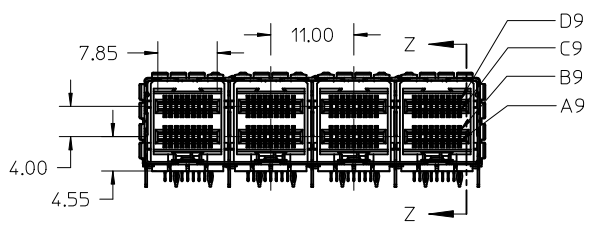
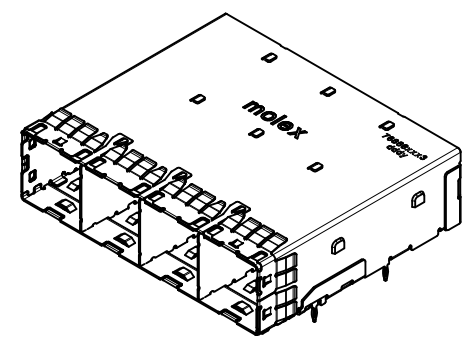


PART NUMBER  
DATE CODE



SECTION Z-Z



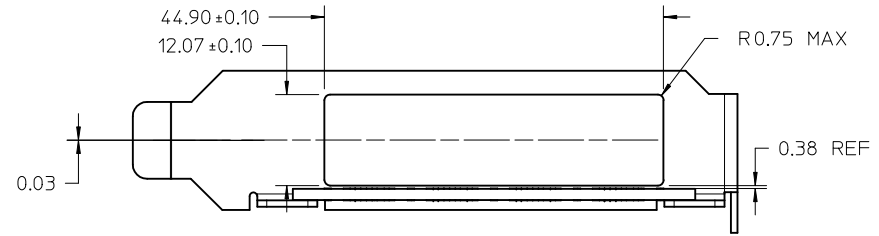
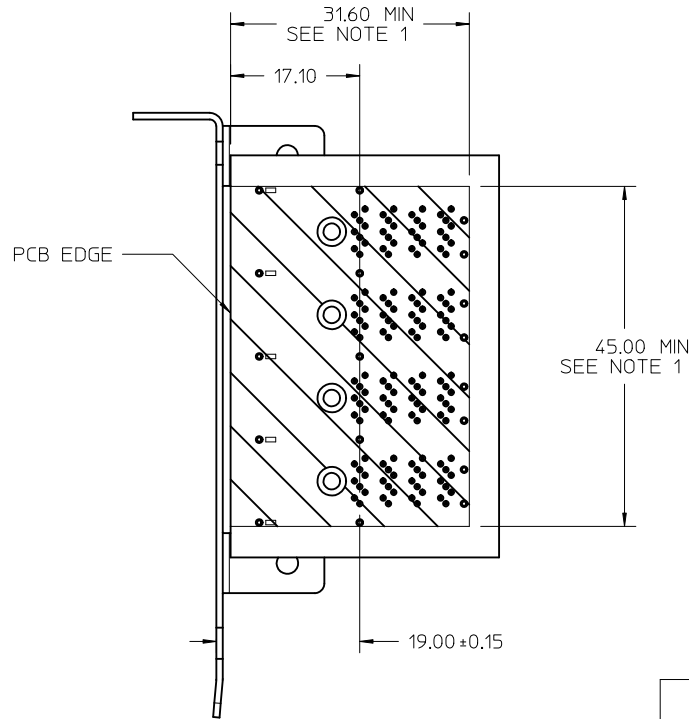
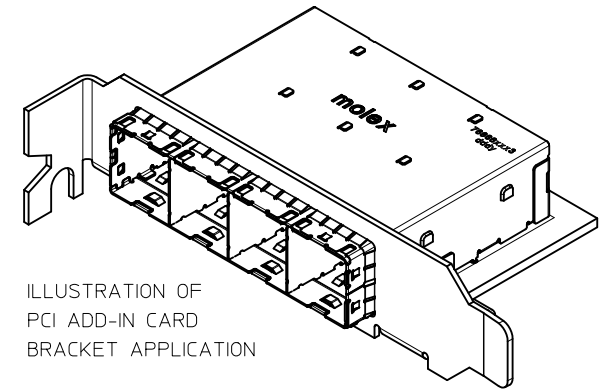
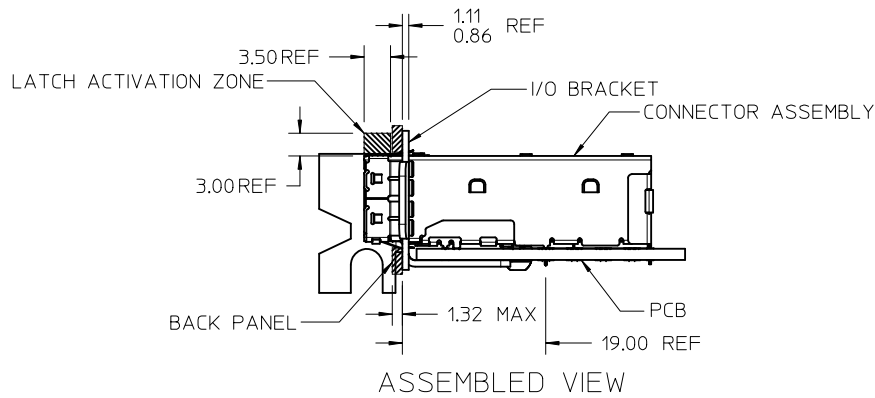
- NOTES:
- MATERIALS:
    - CONNECTOR HOUSING: HIGH TEMPERATURE THERMOPLASTIC GLASS FILLED, UL 94V-0
    - EMI CAGE: NICKEL SILVER ALLOY
    - EMI FINGERS: COPPER ALLOY
    - TERMINALS: COPPER ALLOY
  - FINISHES:
    - EMI FINGERS: 0.50µM MIN NICKEL
    - CONTACT AREA: 0.76µM MIN GOLD OVER 2.54µM MIN NICKEL
    - TAIL AREA:
      - OPTION 1: 0.76µM-1.52µM TIN/LEAD (90/10) OVER 2.54µM MIN NICKEL
      - OPTION 2: 0.76µM-1.52µM TIN (LEAD FREE) OVER 2.54µM MIN NICKEL
  - PRODUCT SPECIFICATION: PS-76866-001
  - PACKAGING SPECIFICATION: PK-76866-001
  - MATES WITH: MOLEX CABLE SERIES 111068
  - RECOMMENDED MOUNTING HARDWARE: M2X0.4 BUTTON HEAD SCREW
    - MOUNTING SCREW LENGTH: PCB THICKNESS + 1.4MM MAX (0.9MM MIN)
    - MOUNTING HARDWARE NOT SUPPLIED

PLATING OPT.	MATERIAL NO.
OPTION 1	76866-0003
OPTION 2	76866-0013

0.37±0.05 WAS ±0.10 EC NO: UCP2012-0946 DRW:KLANG 2011/09/22 CHKD: MBANAKIS APPR: MBANAKIS 2011/09/30	QUALITY SYMBOLS	GENERAL TOLERANCES (UNLESS SPECIFIED)	DIMENSION STYLE	SCALE	DESIGN UNITS	THIRD ANGLE PROJECTION															
	▼=0 ▽=0		MM ONLY	2:1	METRIC																
	REV: D1	DESCRIPTION	<table border="1"> <tr> <th></th> <th>mm</th> <th>INCH</th> </tr> <tr> <td>4 PLACES ±</td> <td>---</td> <td>---</td> </tr> <tr> <td>3 PLACES ±</td> <td>---</td> <td>---</td> </tr> <tr> <td>2 PLACES ±</td> <td>0.13</td> <td>---</td> </tr> <tr> <td>1 PLACE ±</td> <td>0.25</td> <td>---</td> </tr> </table> ANGULAR ±1/2°		mm	INCH	4 PLACES ±	---	---	3 PLACES ±	---	---	2 PLACES ±	0.13	---	1 PLACE ±	0.25	---	DRAWN BY: KLANG DATE: 2009/03/4 CHECKED BY: _____ DATE: _____	TITLE: IPASS PLUS HD 1X4 ASSY	
				mm	INCH																
4 PLACES ±	---	---																			
3 PLACES ±	---	---																			
2 PLACES ±	0.13	---																			
1 PLACE ±	0.25	---																			
		DRAFT WHERE APPLICABLE MUST REMAIN WITHIN DIMENSIONS	APPROVED BY: MBANAKIS DATE: 2010/01/14	MOLEX INCORPORATED DOCUMENT NO. SD-76866-003																	

THIS DRAWING CONTAINS INFORMATION THAT IS PROPRIETARY TO MOLEX INCORPORATED AND SHOULD NOT BE USED WITHOUT WRITTEN PERMISSION

# PCI ADD-IN CARD APPLICATION



NOTES:  
1. CONNECTOR KEEPOUT AREA

SEE SHEET 1 EC NO: UCP2012-0946 DRW: KLK CHKD: APPR: MBANAKIS 2011/09/22 2011/09/30	QUALITY SYMBOLS ▽=0 ▽=0	GENERAL TOLERANCES (UNLESS SPECIFIED) mm INCH 4 PLACES ± --- ± --- 3 PLACES ± --- ± --- 2 PLACES ± 0.13 ± --- 1 PLACE ± 0.25 ± --- ANGULAR ± 1/2°	DIMENSION STYLE MM ONLY DRAWN BY DATE KLK 2009/03/4 CHECKED BY DATE	SCALE 2:1 DESIGN UNITS METRIC THIRD ANGLE PROJECTION	TITLE IPASS PLUS HD 1X4 ASSY
	DRAFT WHERE APPLICABLE MUST REMAIN WITHIN DIMENSIONS	APPROVED BY DATE MBANAKIS 2010/01/14	MATERIAL NO. SEE CHART	MOLEX MOLEX INCORPORATED DOCUMENT NO. SD-76866-003	SHEET NO. 2 OF 7
	SIZE C	THIS DRAWING CONTAINS INFORMATION THAT IS PROPRIETARY TO MOLEX INCORPORATED AND SHOULD NOT BE USED WITHOUT WRITTEN PERMISSION			
	D1	REV			

# ALL OTHER (M/B) APPLICATIONS

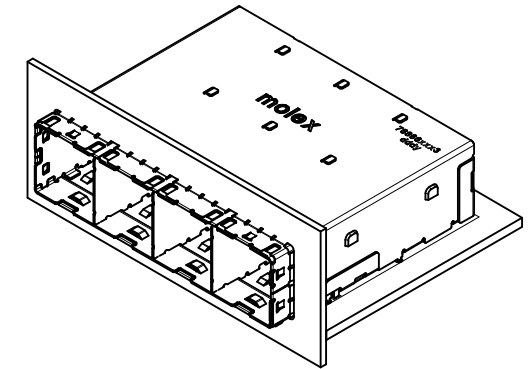
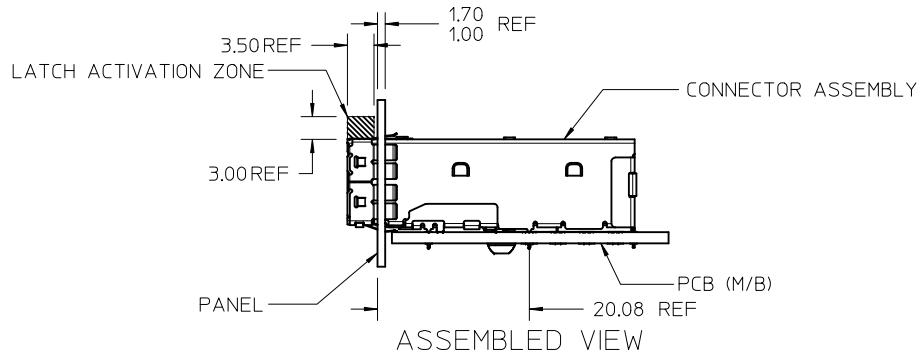
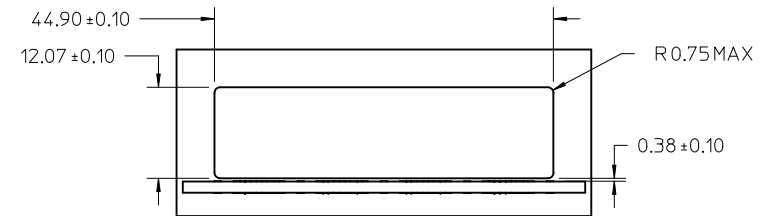
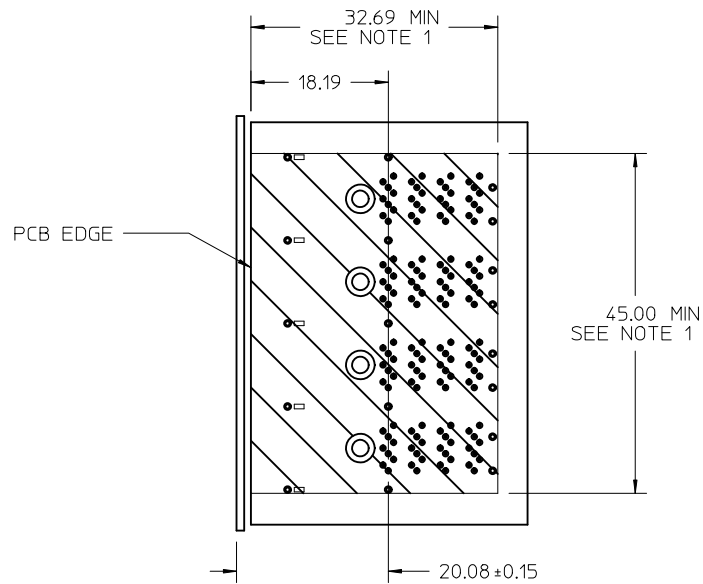


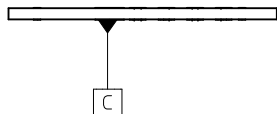
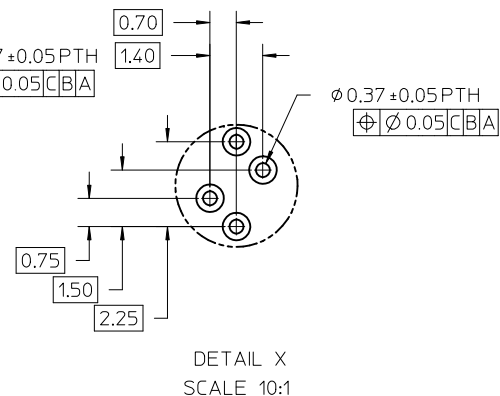
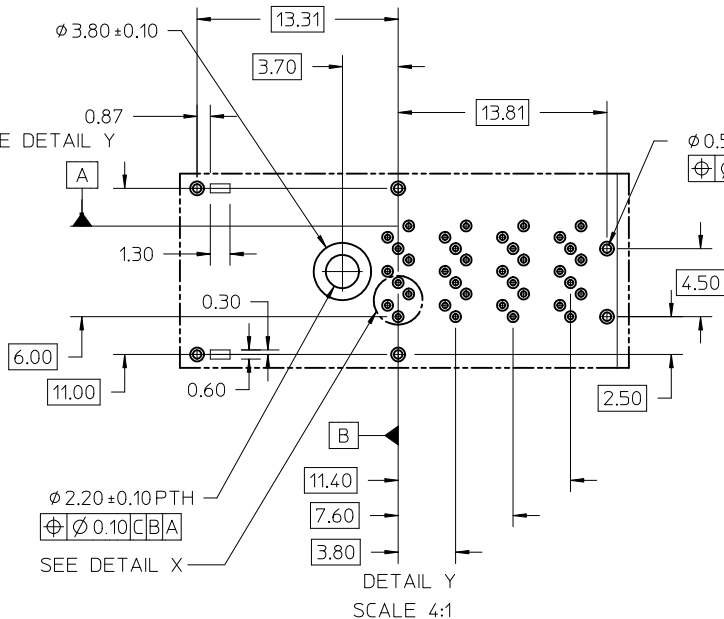
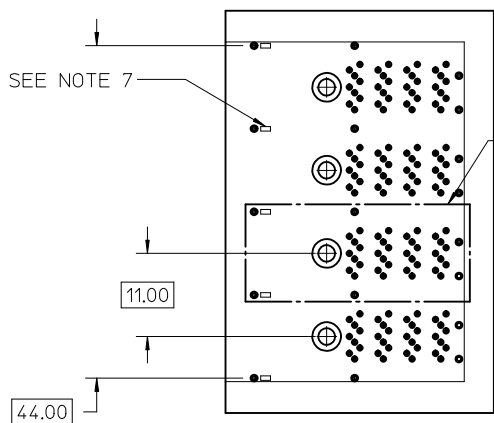
ILLUSTRATION OF ALL OTHER M/B BRACKET APPLICATION



NOTES:  
1. CONNECTOR KEEPOUT AREA

SEE SHEET 1 EC NO: UCP2012-0946 DRINKLANG 2011/09/22 CHKD: APPR: MBANAKIS 2011/09/30 REV:	QUALITY SYMBOLS	GENERAL TOLERANCES (UNLESS SPECIFIED)	DIMENSION STYLE <b>MM ONLY</b>	SCALE <b>2:1</b>	DESIGN UNITS <b>METRIC</b>	THIRD ANGLE PROJECTION
	▽=0	mm INCH	DRAWN BY DATE KLANG 2009/03/4	TITLE <b>IPASS PLUS HD 1X4 ASSY</b>		
	▽=0	4 PLACES ± --- ± ---	CHECKED BY DATE	APPROVED BY DATE MBANAKIS 2010/01/14		
	▽=0	3 PLACES ± --- ± ---	MATERIAL NO. DOCUMENT NO. <b>SD-76866-003</b>			
		2 PLACES ± 0.13 ± ---	SIZE <b>SEE CHART</b>			
		1 PLACE ± 0.25 ± ---	SHEET NO. <b>3 OF 7</b>			
		ANGULAR ± 1/2°	THIS DRAWING CONTAINS INFORMATION THAT IS PROPRIETARY TO MOLEX INCORPORATED AND SHOULD NOT BE USED WITHOUT WRITTEN PERMISSION			
		DRAFT WHERE APPLICABLE MUST REMAIN WITHIN DIMENSIONS				

# RECOMMENDED FOOTPRINT



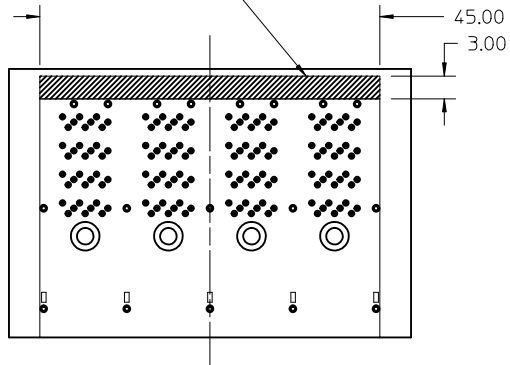
**NOTES:**

1. RECOMMENDED DRILL SIZE FOR 0.37 $\phi$  FINISHED PTH IS 0.48 $\phi$
2. RECOMMENDED ANNULAR RING AROUND 0.37 $\phi$  FINISHED PTH IS 0.73 $\phi$
3. MINIMUM RECOMMENDED SPACING: 47.00MM
4. MINIMUM PCB THICKNESS: 1.57MM
5. RECOMMENDED DRILL SIZE FOR 0.57 $\phi$  FINISHED PTH IS 0.68 $\phi$
6. RECOMMENDED ANNULAR RING AROUND 0.57 $\phi$  FINISHED PTH IS 0.93 $\phi$
7. CAGE STAND OFF AREA, TO TRACES ON SURFACE OF PCB IN THESE AREAS

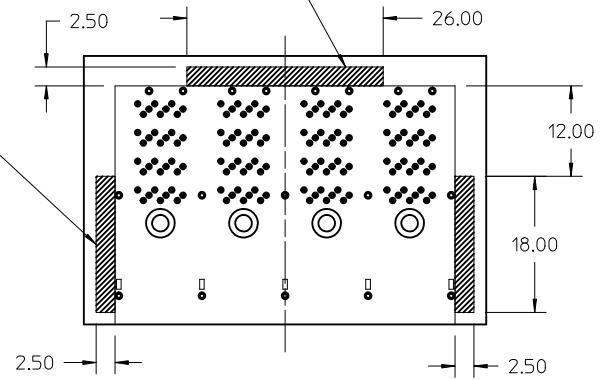
SEE SHEET 1 EC NO: UCP2012-0946 DRW: KLANG 2011/09/22 CHKD: MBANAKIS APPR: MBANAKIS 2011/09/30	QUALITY SYMBOLS	GENERAL TOLERANCES (UNLESS SPECIFIED)	DIMENSION STYLE	SCALE	DESIGN UNITS	THIRD ANGLE PROJECTION															
	$\nabla=0$ $\nabla=0$	<table border="1"> <thead> <tr> <th></th> <th>mm</th> <th>INCH</th> </tr> </thead> <tbody> <tr> <td>4 PLACES</td> <td><math>\pm 0.25</math></td> <td><math>\pm 0.010</math></td> </tr> <tr> <td>3 PLACES</td> <td><math>\pm 0.25</math></td> <td><math>\pm 0.010</math></td> </tr> <tr> <td>2 PLACES</td> <td><math>\pm 0.13</math></td> <td><math>\pm 0.005</math></td> </tr> <tr> <td>1 PLACE</td> <td><math>\pm 0.25</math></td> <td><math>\pm 0.010</math></td> </tr> </tbody> </table>		mm	INCH	4 PLACES	$\pm 0.25$	$\pm 0.010$	3 PLACES	$\pm 0.25$	$\pm 0.010$	2 PLACES	$\pm 0.13$	$\pm 0.005$	1 PLACE	$\pm 0.25$	$\pm 0.010$	MM ONLY	2:1	METRIC	
		mm	INCH																		
	4 PLACES	$\pm 0.25$	$\pm 0.010$																		
3 PLACES	$\pm 0.25$	$\pm 0.010$																			
2 PLACES	$\pm 0.13$	$\pm 0.005$																			
1 PLACE	$\pm 0.25$	$\pm 0.010$																			
DRAFT WHERE APPLICABLE MUST REMAIN WITHIN DIMENSIONS	DRAWN BY: KLANG DATE: 2009/03/14 CHECKED BY: _____ DATE: _____ APPROVED BY: MBANAKIS DATE: 2010/01/14 MATERIAL NO.	TITLE: IPASS PLUS HD 1X4 ASSY MOLEX INCORPORATED DOCUMENT NO. SD-76866-003	SHEET NO. 4 OF 7																		
D1	REV	SIZE C	THIS DRAWING CONTAINS INFORMATION THAT IS PROPRIETARY TO MOLEX INCORPORATED AND SHOULD NOT BE USED WITHOUT WRITTEN PERMISSION																		

# RECOMMENDED TOOPING KEEP OUT AREAS

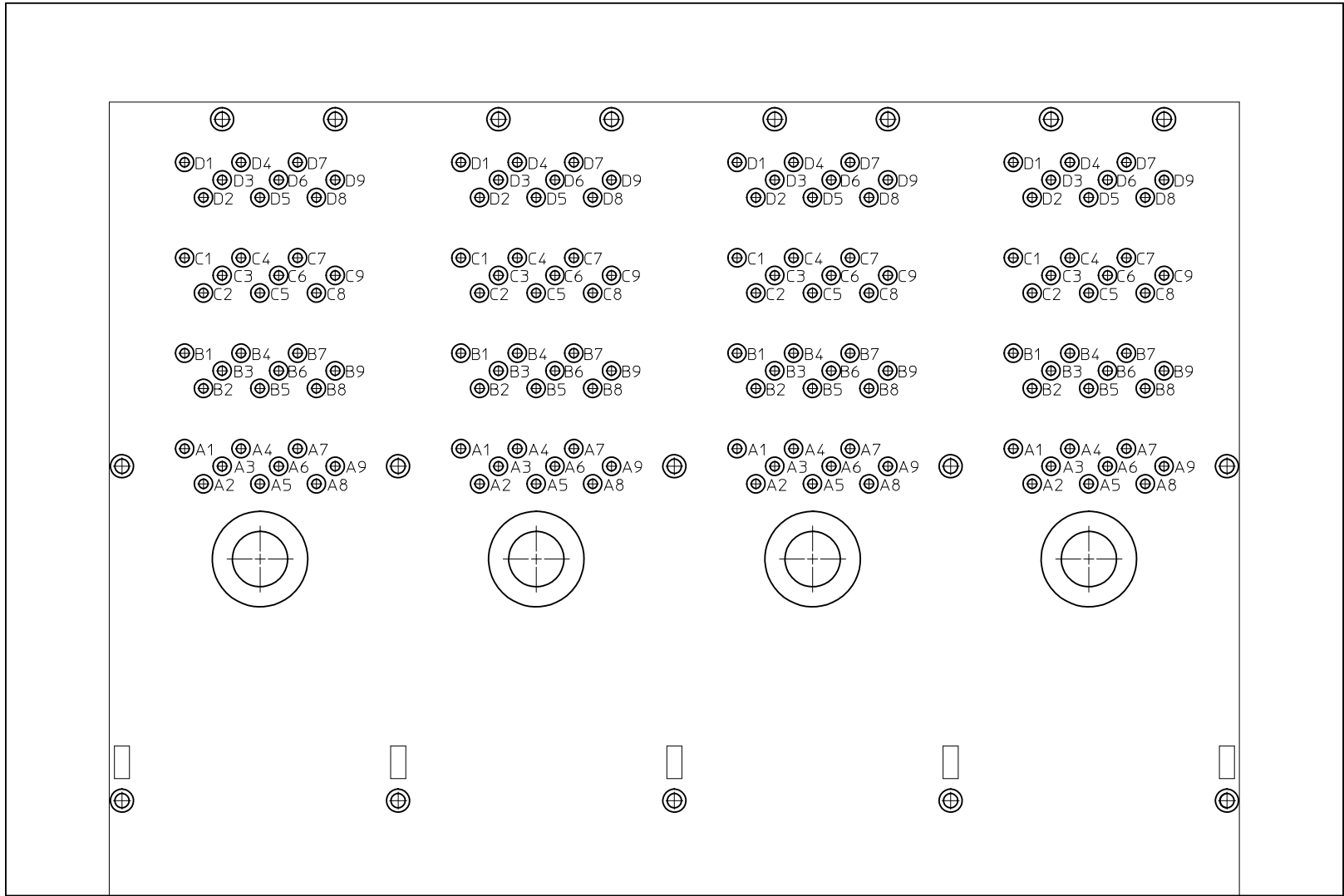
RECOMMENDED INSERTION TOOL  
KEEP OUT AREA  
NO COMPONENTS IN THIS AREA  
MORE THAN 7.50 mm TALL



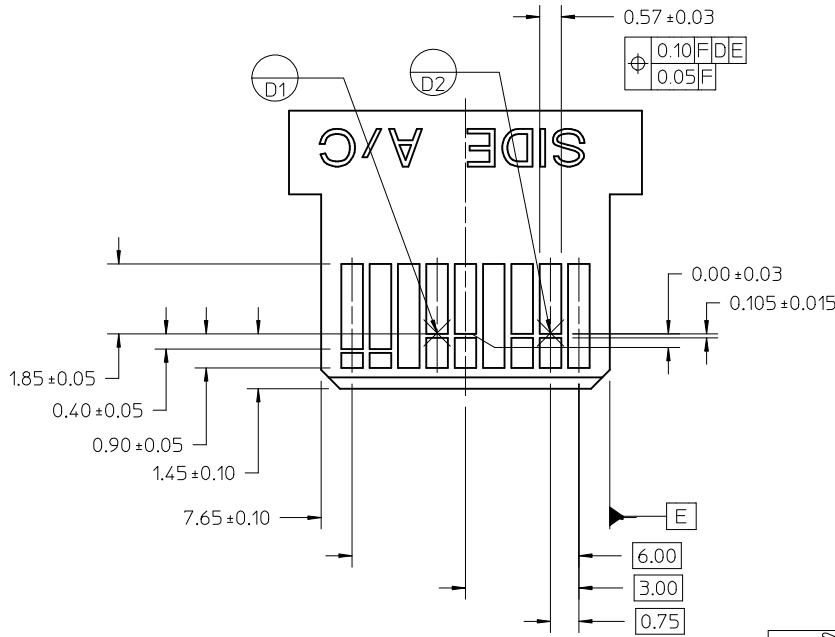
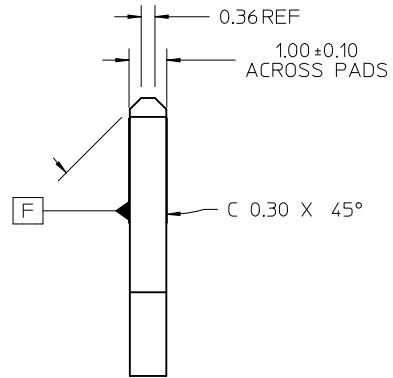
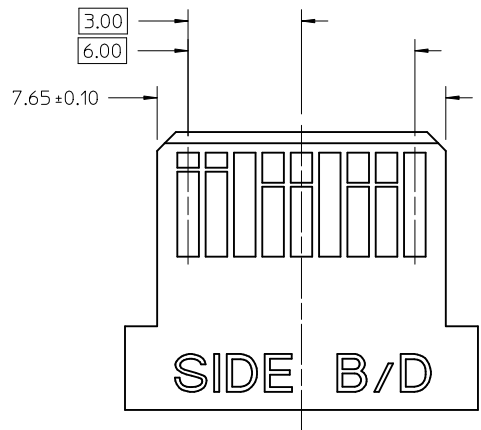
RECOMMENDED EXTRACTION TOOL  
KEEP OUT AREA  
NO COMPONENTS IN THESE AREAS



SEE SHEET 1 EC NO: UCP2012-0946 DRW:KLANG CHKD: APPR:MBANAKIS	DESCRIPTION 2011/09/22 2011/09/30	QUALITY SYMBOLS	GENERAL TOLERANCES (UNLESS SPECIFIED)	DIMENSION STYLE	SCALE	DESIGN UNITS	THIRD ANGLE PROJECTION	
		▽=0	mm INCH	MM ONLY	2:1	METRIC	☉	
		▽=0	4 PLACES ± --- ± ---	DRAWN BY DATE	TITLE			
		▽=0	3 PLACES ± --- ± ---	KLANG 2009/03/4	IPASS PLUS HD 1X4 ASSY			
			2 PLACES ± 0.13 ± ---	CHECKED BY DATE	APPROVED BY DATE			
			1 PLACE ± 0.25 ± ---	MBANAKIS 2010/01/14	MOLEX INCORPORATED			
			ANGULAR ± 1/2°	MATERIAL NO.	DOCUMENT NO.			
			DRAFT WHERE APPLICABLE MUST REMAIN WITHIN DIMENSIONS	SEE CHART	SD-76866-003			
D1	REV			SIZE C	THIS DRAWING CONTAINS INFORMATION THAT IS PROPRIETARY TO MOLEX INCORPORATED AND SHOULD NOT BE USED WITHOUT WRITTEN PERMISSION			



SEE SHEET 1 EC NO: UCP2012-0946 DRW:KLANG CHKD: APPR:MBANAKIS 2011/09/22 2011/09/30	QUALITY SYMBOLS ▽=0 ▽=0	GENERAL TOLERANCES (UNLESS SPECIFIED) <table border="1"> <thead> <tr> <th></th> <th>mm</th> <th>INCH</th> </tr> </thead> <tbody> <tr> <td>4 PLACES</td> <td>± ---</td> <td>± ---</td> </tr> <tr> <td>3 PLACES</td> <td>± ---</td> <td>± ---</td> </tr> <tr> <td>2 PLACES</td> <td>± 0.13</td> <td>± ---</td> </tr> <tr> <td>1 PLACE</td> <td>± 0.25</td> <td>± ---</td> </tr> </tbody> </table> ANGULAR ±1/2°		mm	INCH	4 PLACES	± ---	± ---	3 PLACES	± ---	± ---	2 PLACES	± 0.13	± ---	1 PLACE	± 0.25	± ---	DIMENSION STYLE <b>MM ONLY</b> DRAWN BY: KLANG DATE: 2009/03/4 CHECKED BY: _____ DATE: _____ APPROVED BY: MBANAKIS DATE: 2010/01/14 MATERIAL NO.: SEE CHART	SCALE: 8:1 DESIGN UNITS: METRIC THIRD ANGLE PROJECTION	TITLE: IPASS PLUS HD 1X4 ASSY MOLEX INCORPORATED DOCUMENT NO.: SD-76866-003 SHEET NO.: 6 OF 7
		mm	INCH																	
	4 PLACES	± ---	± ---																	
	3 PLACES	± ---	± ---																	
2 PLACES	± 0.13	± ---																		
1 PLACE	± 0.25	± ---																		
DRAFT WHERE APPLICABLE MUST REMAIN WITHIN DIMENSIONS	SIZE: C	THIS DRAWING CONTAINS INFORMATION THAT IS PROPRIETARY TO MOLEX INCORPORATED AND SHOULD NOT BE USED WITHOUT WRITTEN PERMISSION																		
D1	REV																			



NOTES:  
1. 0.05 MINIMUM KEEP OUT FOR SOLDER MASK AROUND ALL PADS  
2. DATUM D TARGETS ARE DEFINED BY THE RESPECTIVE PAD CENTER LINES AND THE LEADING EDGE OF THE TARGET PADS

SEE SHEET 1 EC NO: UCP2012-0946 DRW:KLANG 2011/09/22 CHKD: APPR:MBANAKIS 2011/09/30	QUALITY SYMBOLS	GENERAL TOLERANCES (UNLESS SPECIFIED)	DIMENSION STYLE	SCALE	DESIGN UNITS	THIRD ANGLE PROJECTION
	▽=0 ▽=0		MM ONLY	10:1	METRIC	
D1	DESCRIPTION	4 PLACES ± --- ± --- 3 PLACES ± --- ± --- 2 PLACES ± 0.13 ± --- 1 PLACE ± 0.25 ± ---	DRAWN BY	DATE	TITLE	
		ANGULAR ± 1/2°	KLANG	2009/03/4	IPASS PLUS HD 1X4 ASSY	
		DRAFT WHERE APPLICABLE MUST REMAIN WITHIN DIMENSIONS	CHECKED BY	DATE	APPROVED BY	
			MBANAKIS	2010/01/14	DATE	
			MATERIAL NO.		MOLEX INCORPORATED	
			SEE CHART		DOCUMENT NO.	
			SD-76866-003		SHEET NO.	
			7 OF 7		THIS DRAWING CONTAINS INFORMATION THAT IS PROPRIETARY TO MOLEX INCORPORATED AND SHOULD NOT BE USED WITHOUT WRITTEN PERMISSION	