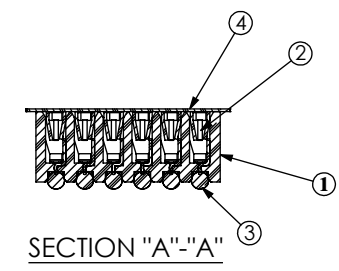
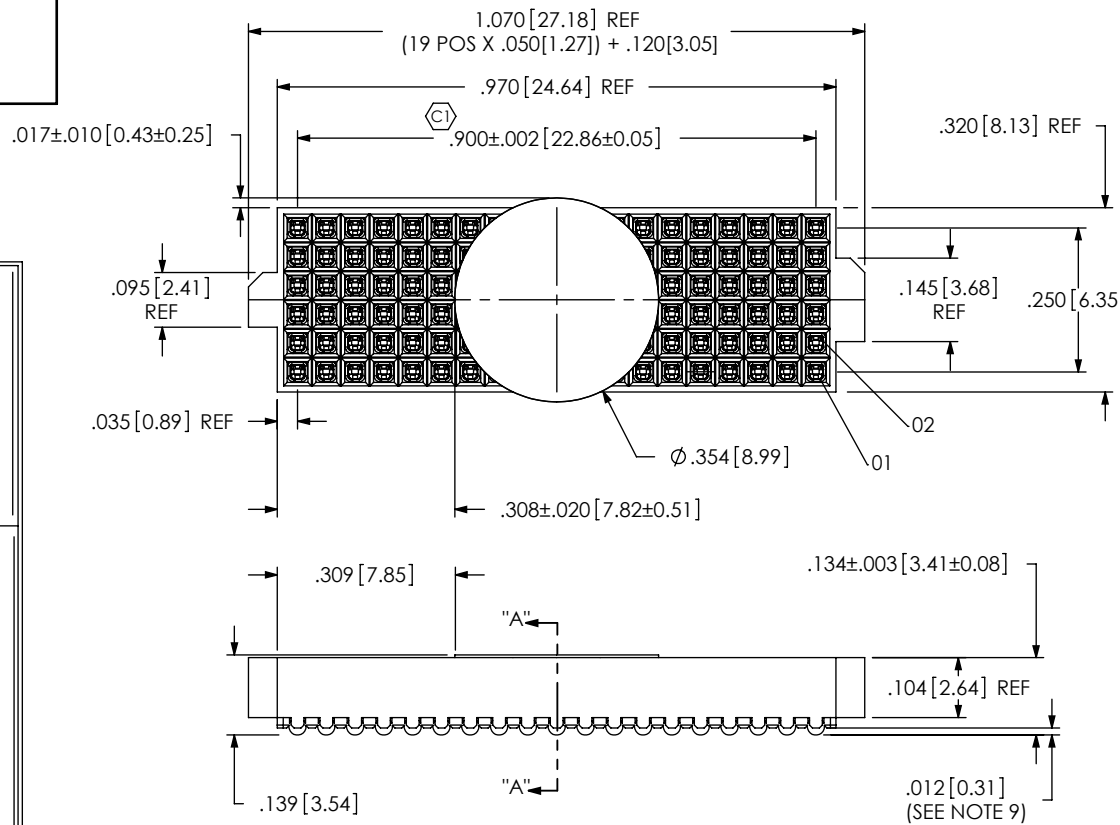
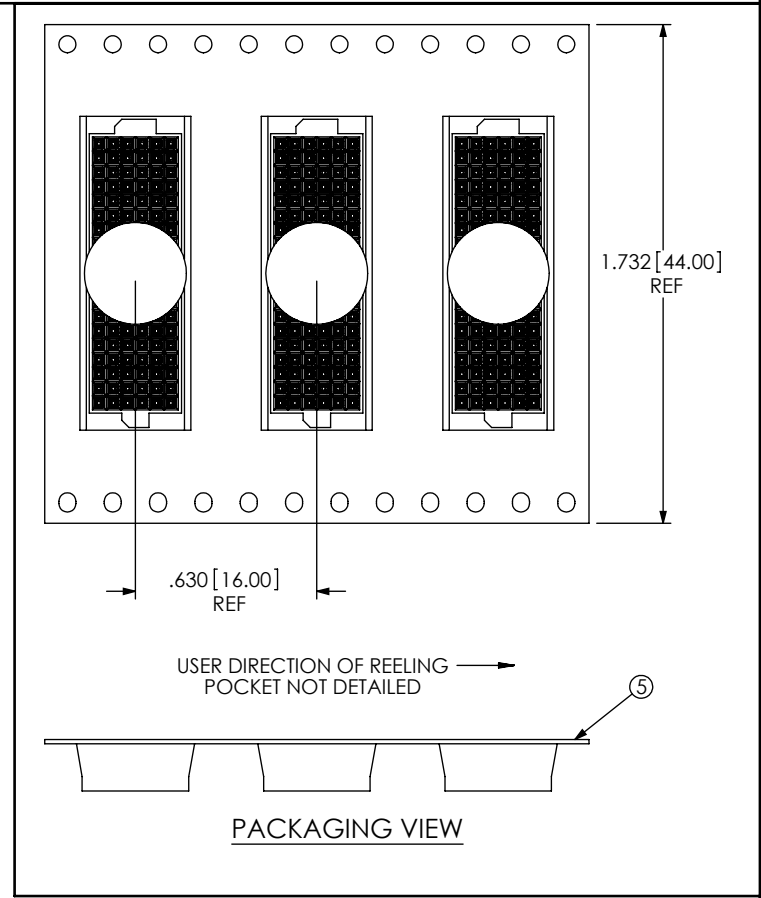
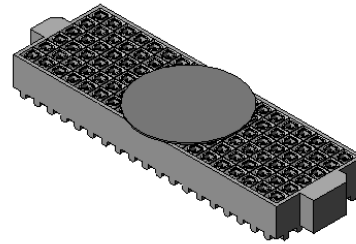


NOTES:

1. USE LEAD FREE SOLDER BALLS & ASP-103597-01-B BODY FOR NON-STANDARD 19 POSITION.
2. Ⓢ REPRESENTS A CRITICAL DIMENSION.
3. BURR ALLOWANCE: .0005[.013] MAX.
4. MINIMUM PUSHOUT FORCE: .5 LB.
5. MAXIMUM ALLOWABLE BOW: .002[.05] INCH/INCH AFTER ASSEMBLY.
6. CONTACT TO BE FLUSH TO .003[.08] RECESSED.
7. ONE REEL MINIMUM PLATING REQUIREMENT (85,000 CONTACTS PER REEL).
8. ALL DIMS TO BE SYMMETRICAL ABOUT THE CENTERLINE WITHIN ±.001[.03].
9. .0025[.064] MAX VARIATION BETWEEN SOLDERBALLS.
10. REFER TO VISUAL INSPECTION BOARD FOR SOLDERBALL APPEARANCE CHECKS.
11. THE DISTANCE FROM THE CENTER OF ANY SOLDERBALL TO THE CENTER OF ANY ADJACENT INNER PEG SHALL BE .025±.005[.64±.13].
12. PARTS TO BE PACKAGED IN TAPE & REEL.



DATE: \_\_\_\_\_  
 COMPANY: \_\_\_\_\_  
 CUSTOMER SIGNATURE \_\_\_\_\_  
 PRINTED NAME \_\_\_\_\_  
 PHONE No: \_\_\_\_\_  
 FAX No: \_\_\_\_\_

ACCEPTANCE OF DRAWING  
 ACCEPTED WITH DEVIATIONS LISTED

ITEM NO.	PART NUMBER	QUANTITY	MATERIAL
1	ASP-103597-01-B	1.0000	VECTRA E130i, COLOR: BLACK
2	C-226-03-H	114.00	PHOS BRONZE, 521 HARD TEMPER
3	SDB-030-9653	114.00	96.5% Sn/3% Ag/.5% Cu
4	K-850-650	1.0000	POLYAMIDE FILM (KAPTON)
5	CT-ASP1132MS	.0015	CONDUCTIVE POLYMER

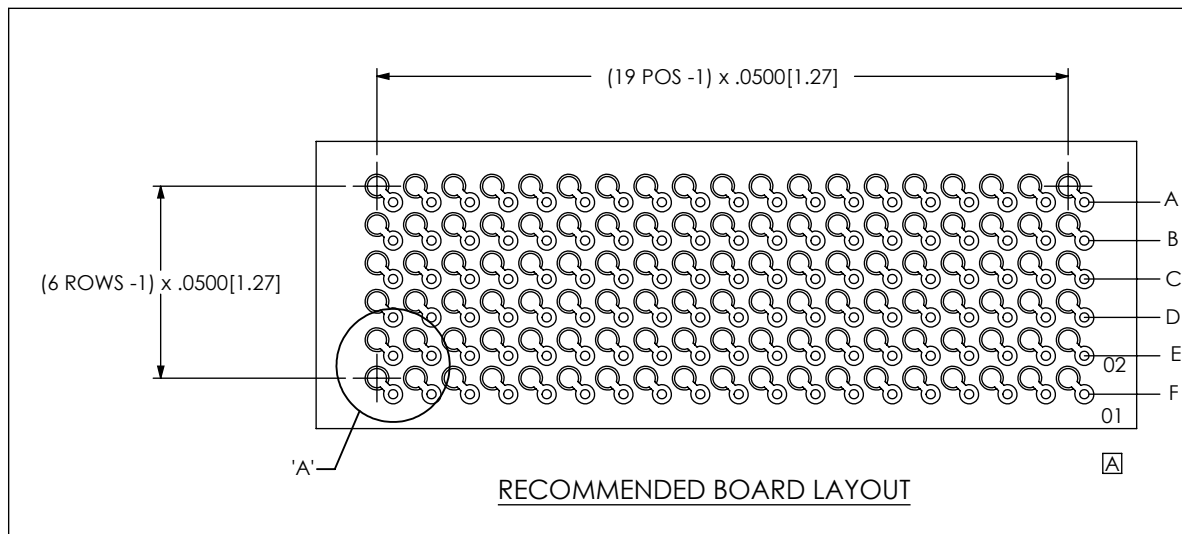
UNLESS OTHERWISE SPECIFIED, DIMENSIONS ARE IN INCHES. TOLERANCES ARE:  
 DECIMALS ANGLES  
 .XX: ±.01 2°  
 .XXX: ±.005  
 .XXXX: ±.0020

**PROPRIETARY NOTE**  
 THIS DOCUMENT CONTAINS INFORMATION CONFIDENTIAL AND PROPRIETARY TO SAMTEC, INC. AND SHALL NOT BE REPRODUCED OR TRANSFERRED TO OTHER DOCUMENTS OR DISCLOSED TO OTHERS OR USED FOR ANY PURPOSE OTHER THAN THAT WHICH IT WAS OBTAINED WITHOUT THE EXPRESSED WRITTEN CONSENT OF SAMTEC, INC.

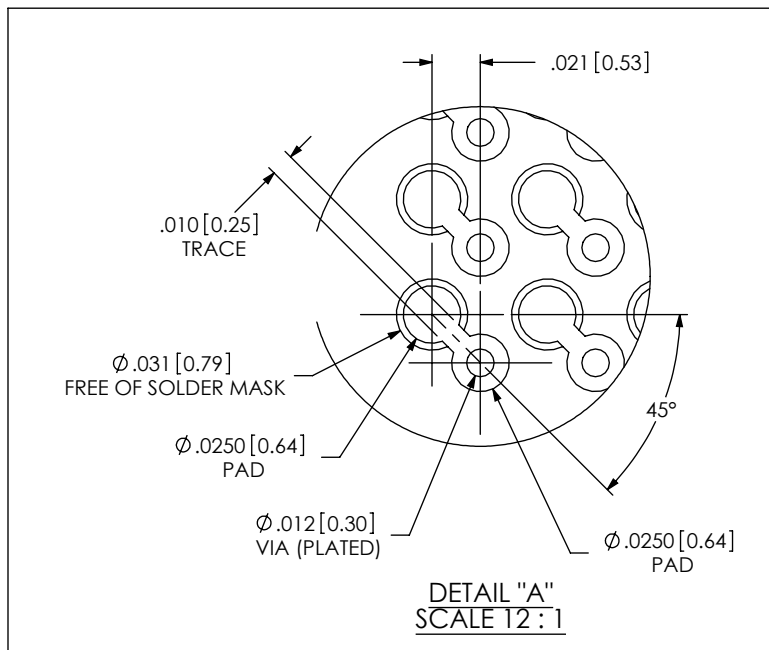
**samtec**  
 520 PARK EAST BLVD, NEW ALBANY, IN 47150  
 PHONE: 812-944-6733 FAX: 812-948-5047  
 e-Mail: info@SAMTEC.com code: 55322


DO NOT SCALE DRAWING SHEET SCALE: 3:1  
 PLATING:  
 CONTACT AREA: .000030 GOLD OVER .000050 NICKEL  
 REMAINDER: .000003 FLASH GOLD OVER .000050 NICKEL

DESCRIPTION: .050 MULTI-ROW SOCKET ASSMEBLY  
 DWG. NO. ASP-103612-04  
 BY: RRC 10/13/06 SHEET 1 OF 2



NOTE:  
 OUTER ROWS MAY NOT NEED VIAS - THIS IS LEFT TO  
 THE DISCRETION OF THE BOARD DESIGNER.



<p><b>PROPRIETARY NOTE</b>                  THIS DOCUMENT CONTAINS INFORMATION                  CONFIDENTIAL AND PROPRIETARY TO                  SAMTEC, INC. AND SHALL NOT BE REPRODUCED                  OR TRANSFERRED TO OTHER DOCUMENTS OR                  DISCLOSED TO OTHERS OR USED FOR ANY                  PURPOSE OTHER THAN THAT WHICH IT WAS                  OBTAINED WITHOUT THE EXPRESSED WRITTEN                  CONSENT OF SAMTEC, INC.</p>	 520 PARK EAST BLVD, NEW ALBANY, IN 47150 PHONE: 812-944-6733 FAX: 812-948-5047 e-Mail: info@SAMTEC.com code: 55322		
	<p>SHEET SCALE: 3:1</p>	<p>DESCRIPTION:                  .050 MULTI-ROW SOCKET ASSMEBLY</p>	
<p>DWG. NO.                  ASP-103612-04</p>		<p>BY: RRC 10/13/06</p>	<p>SHEET 2 OF 2</p>