

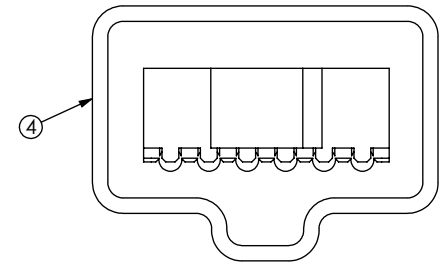
NOTES:

1. USE ASP-103597-01-B BODY FOR NON-STANDARD 19 POSITION.
2. Ⓞ REPRESENTS A CRITICAL DIMENSION.
3. BURR ALLOWANCE: .0005[.013] MAX.
4. MINIMUM PUSHOUT FORCE: .5 LB.
5. MAXIMUM ALLOWABLE BOW: .002[.05] INCH/INCH AFTER ASSEMBLY.
6. CONTACT TO BE FLUSH TO .003[.08] RECESSED.
7. ONE REEL MINIMUM PLATING REQUIREMENT (85,000 CONTACTS PER REEL).
8. ALL DIMS TO BE SYMMETRICAL ABOUT THE CENTERLINE WITHIN ±.001[.03].
9. .0025[.064] MAX VARIATION BETWEEN SOLDERBALLS.
10. REFER TO VISUAL INSPECTION BOARD FOR SOLDERBALL APPEARANCE CHECKS.
11. THE DISTANCE FROM THE CENTER OF ANY SOLDERBALL TO THE CENTER OF ANY ADJACENT INNER PEG SHALL BE .025±.005[.64±.13].
12. PARTS TO BE PACKAGED IN TUBES.

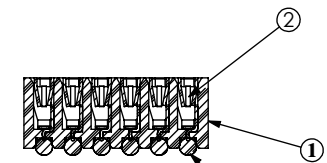
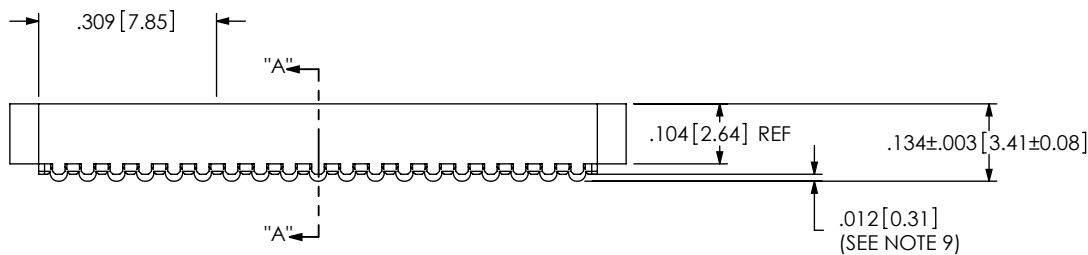
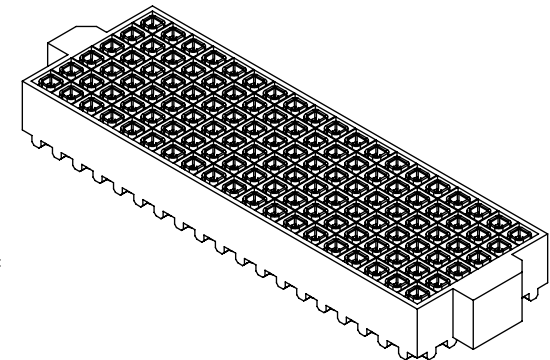
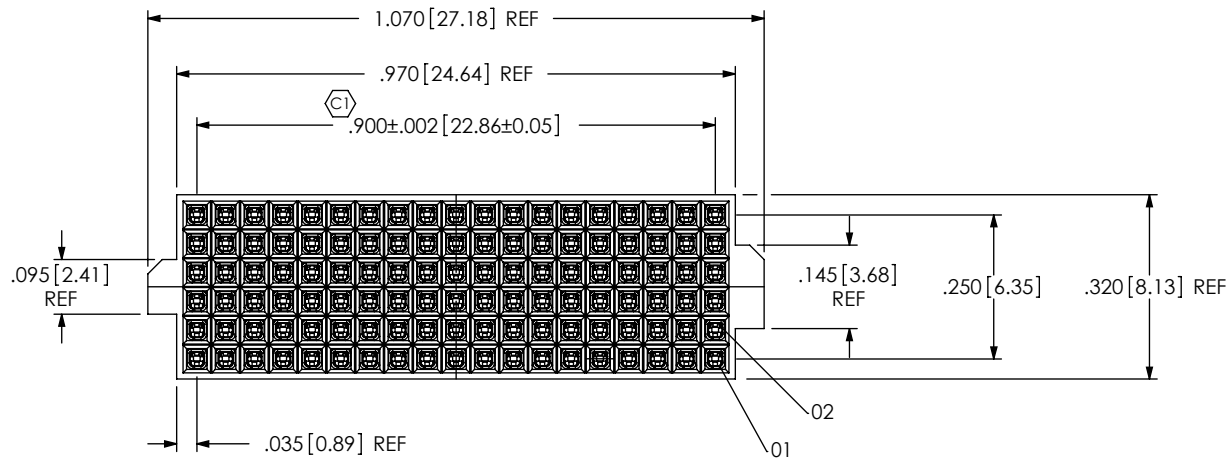
ANY REV. MADE TO THIS PRINT MUST HAVE A UPDATED MKTG. PRINT

REVISION

A	JL	T WILD
10/18/2006 ECN-86223		
RELEASE FOR PRODUCTION		
B	SS	T WILD
10/4/2007 ECN-81145		
SHT 2, FOOTPRINT, CHG 01 POSITION FROM TOP RIGHT TO LOWER RIGHT		



PACKAGING VIEW



SECTION "A"-A"

ITEM NO.	PART NUMBER	QUANTITY	MATERIAL
1	ASP-103597-01-B	1.00000	VECTRA E130i, COLOR: BLACK
2	C-140-03-H	114.00000	PHOS BRONZE, 521 HARD TEMPER
3	SDB-030-6337	114.00000	63% TIN /37% LEAD
4	PT-1-24-01-61	.05000	ANTI-STATIC PVC
5	TP-03	.10000	THERMOPLASTIC RUBBER

UNLESS OTHERWISE SPECIFIED, DIMENSIONS ARE IN INCHES. TOLERANCES ARE:  
 DECIMALS ANGLES  
 .XX: ±.01 2°  
 .XXX: ±.005  
 .XXXX: ±.0020

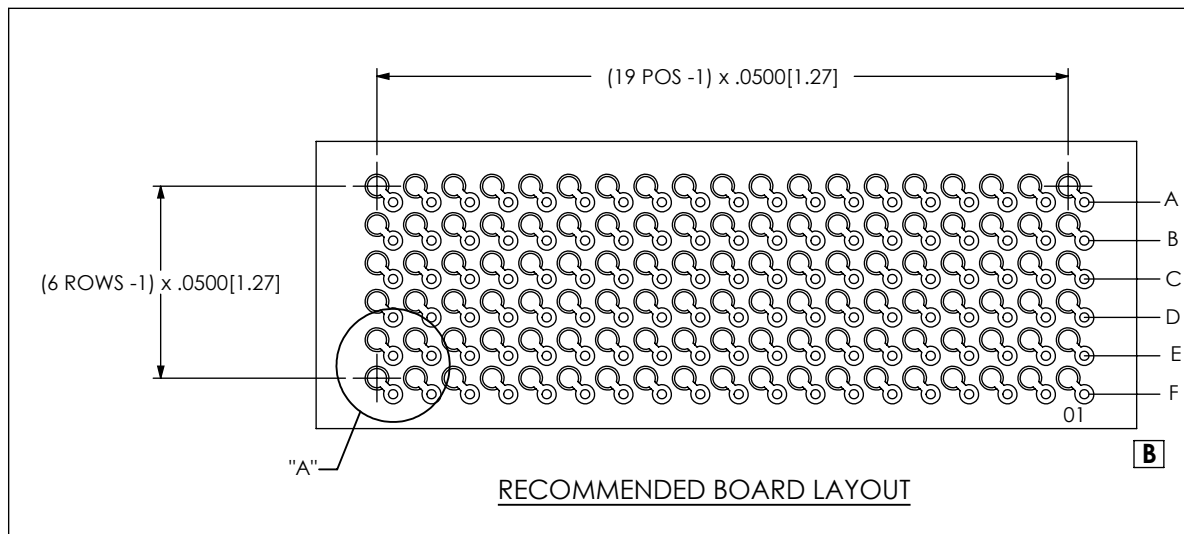
PROPRIETARY NOTE  
 THIS DOCUMENT CONTAINS INFORMATION CONFIDENTIAL AND PROPRIETARY TO SAMTEC, INC. AND SHALL NOT BE REPRODUCED OR TRANSFERRED TO OTHER DOCUMENTS OR DISCLOSED TO OTHERS OR USED FOR ANY PURPOSE OTHER THAN THAT WHICH IT WAS OBTAINED WITHOUT THE EXPRESSED WRITTEN CONSENT OF SAMTEC, INC.



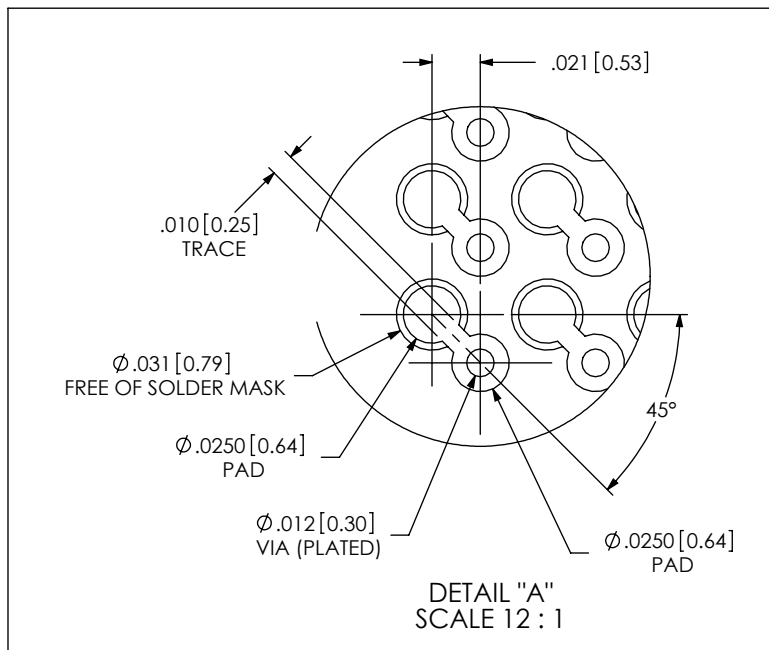
520 PARK EAST BLVD, NEW ALBANY, IN 47150  
 PHONE: 812-944-6733 FAX: 812-948-5047  
 e-Mail: info@SAMTEC.com code: 55322

DO NOT SCALE DRAWING SHEET SCALE: 3:1  
 PLATING:  
 CONTACT AREA: .000030 GOLD OVER .000050 NICKEL  
 REMAINDER: .000003 FLASH GOLD OVER .000050 NICKEL

DESCRIPTION: .050 MULTI-ROW SOCKET ASSMEBLY  
 DWG. NO. ASP-103612-03  
 BY: J LACKEY 10/18/2006 SHEET 1 OF 2



NOTE:  
 OUTER ROWS MAY NOT NEED VIAS - THIS IS LEFT TO  
 THE DISCRETION OF THE BOARD DESIGNER.



**PROPRIETARY NOTE**  
 THIS DOCUMENT CONTAINS INFORMATION  
 CONFIDENTIAL AND PROPRIETARY TO  
 SAMTEC, INC. AND SHALL NOT BE REPRODUCED  
 OR TRANSFERRED TO OTHER DOCUMENTS OR  
 DISCLOSED TO OTHERS OR USED FOR ANY  
 PURPOSE OTHER THAN THAT WHICH IT WAS  
 OBTAINED WITHOUT THE EXPRESSED WRITTEN  
 CONSENT OF SAMTEC, INC.



520 PARK EAST BLVD, NEW ALBANY, IN 47150  
 PHONE: 812-944-6733 FAX: 812-948-5047  
 e-Mail: info@SAMTEC.com code: 55322

SHEET SCALE: 3:1

DESCRIPTION:  
 .050 MULTI-ROW SOCKET ASSMEBLY

DWG. NO.  
 ASP-103612-03