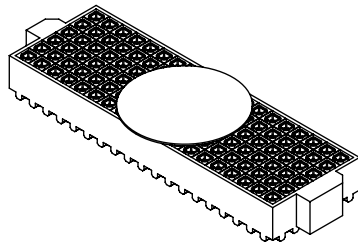


5GD!%\$' \*%&! \$&

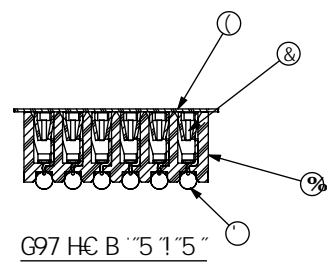
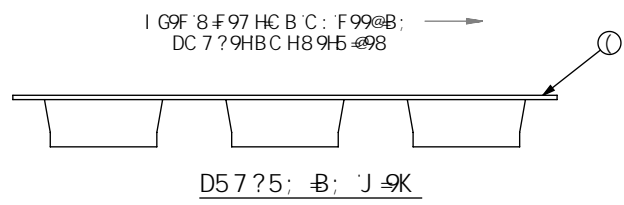
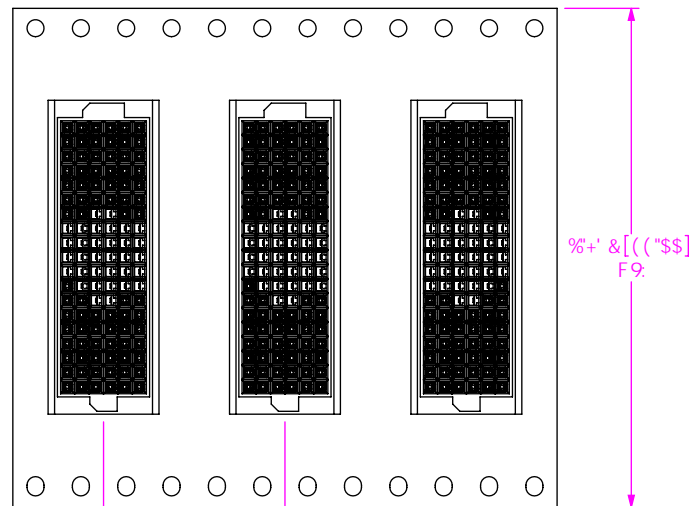
F9J GCB

NOTES:

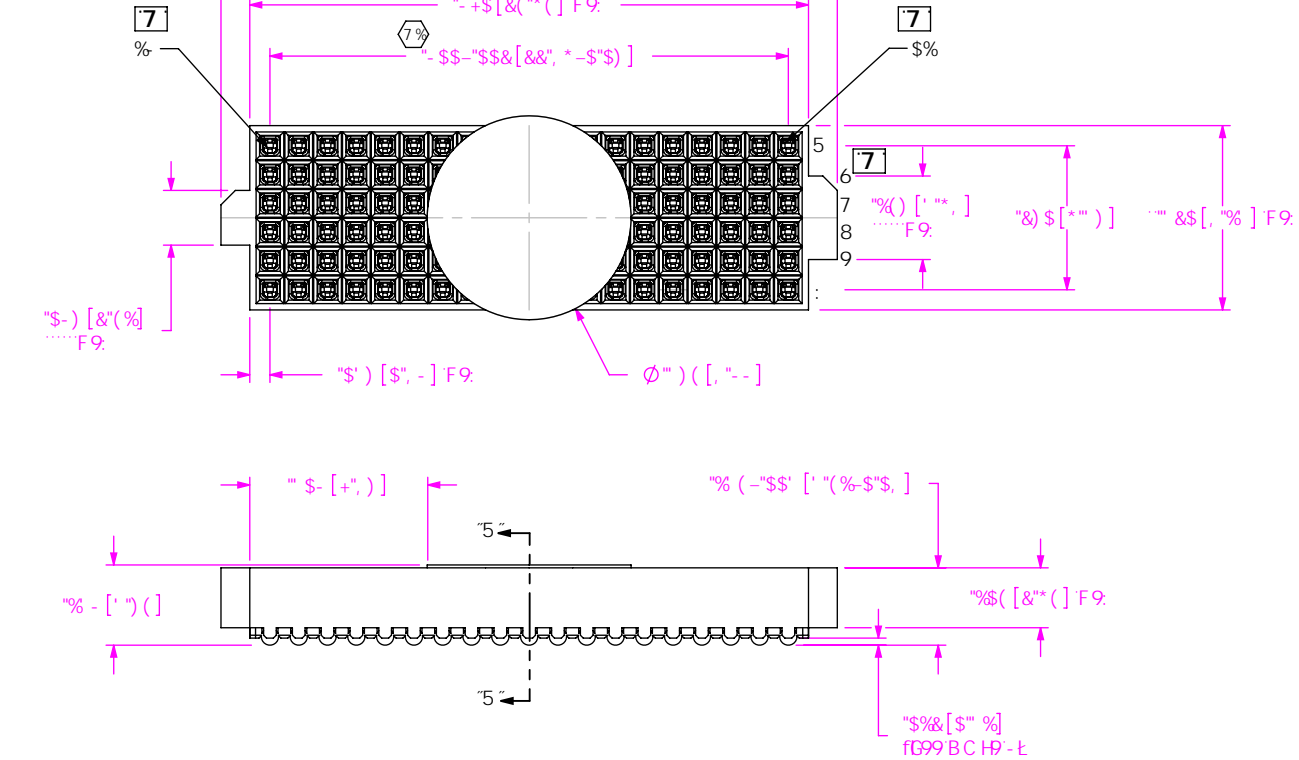
1. USE ASP-103597-01-B BODY FOR NON-STANDARD 19 POSITION.
2.  $\varnothing$  REPRESENTS A CRITICAL DIMENSION.
3. BURR ALLOWANCE: .0005[.013] MAX.
4. MINIMUM PUSHOUT FORCE: .5 LB.
5. MAXIMUM ALLOWABLE BOW: .002[.05] INCH/INCH AFTER ASSEMBLY.
6. CONTACT TO BE FLUSH TO .003[.08] RECESSED.
7. ONE REEL MINIMUM PLATING REQUIREMENT (85,000 CONTACTS PER REEL).
8. ALL DIMS TO BE SYMMETRICAL ABOUT THE CENTERLINE WITHIN  $\pm 0.01[.03]$ .
9. .0025[.064] MAX VARIATION BETWEEN SOLDERBALLS.
10. REFER TO VISUAL INSPECTION BOARD FOR SOLDERBALL APPEARANCE CHECKS.
11. THE DISTANCE FROM THE CENTER OF ANY SOLDERBALL TO THE CENTER OF ANY ADJACENT INNER PEG SHALL BE .025 $\pm$ .005[.64 $\pm$ .13].
12. PARTS TO BE PACKAGED IN TAPE & REEL.
13. LEAD FREE SOLDER BALLS.



5BMF9J "A 589HC H-GDF-BHA I GH<5J 95 1 D85H8'A ?H "DF-BH



0	TW	J HENRY
9/12/2006	ECN-63999	
ISSUE FOR REVIEW		
1	BC	J HENRY
11/22/2006	ECN-67974	
CHANGE MATERIAL OF ITEM 3 FROM 63% TIN/37% LEAD TO 96.5% SN/3% AG/5% CU		
A	TW	J HENRY
1/26/2007	ECN-70557	
RELEASE FOR PRODUCTION		
B	JB	J HENRY
10/5/2007	ECN-81209	
SHEET 2, FOOTPRINT: MOVE POS NOTE "01", DEL. POS NOTE "19", ADD POS NOTE "06"		
C	DS	T LOZIER
4/1/2008	ECN-88439	
SHT 1, TOP VIEW; CHG PIN 1 LOCATION TO UPPER RIGHT; ADD PIN 19 CALLOUT; ADD A,B,C,D,E AND F; SHT 2, BOARD LAYOUT; CHG PIN 1 LOCATION TO UPPER RIGHT; ADD PIN 19 CALLOUT		



#H9A 'BC "	D5FHBI A 69F	E I 5BH#M	A 5HPF 5@
%	5GD!%\$' ) - +! \$% 6	\$\$\$	J 97 HF 5 '9% \$Z 7 C @CF. 6@5 7 ?
&	7!% (\$!\$' !<	%(\$ "\$ \$	D<C G 6FC BNz) &%< 5F 8 'H9A D9F
'	G86!\$!\$' !* )'	%(\$ "\$ \$	- * ) i ' Gb # i ' 5 ( # ) i ' 7 i
(	?!, ) \$!\$' ) \$	\$\$\$	DC @M5A 89: @A fP 5DHC Bt
)	7 H 5GD% &A G	\$\$\$	7 C B 81 7 HJ 9DC @VA 9F

I B @GG C H 9FK 69 GD97 = 98Z 8 A 9BGC BG 5F9 B B 7 < 9G HC @F 5B 7 9G 5F9. 897 A 5@G ..... 5B; @9G "LL. ± *\$% ..... &° "LLL. ± *\$% "LLLL. ± *\$%&\$	DFC DF 9H5 FMBC H9 H: 68C 71A 98H7C B16 8G B: CFA 5HC B 7 C B: 89B H5 @588 DFC DF 9H5 FMC GSA H7 Z 4 B 7 * 5B 8 G 5 @8B C H69 F 90FC 81 7 98 C F H 5 B G 9 F 98 1C C H 9 F 8 C 71 A 9B H G C F 8 47 @C 98 H C H 9 F C F I 98 : C F 5 B M DI FDC 9 C H 9 F H 5 B H 5 H K < 7 < H K 5 G C 6 H 8 98 K H C I H H 9 9 L D F 9 G 98 K F H 98 7 C B 98 H C: GSA H7 Z 4 B 7
D85HB: 7 C B H 5 7 H 5 F 95. "\$\$\$\$ \$: C @B C J 9F "\$\$\$\$ \$ B 7 7 9@ F9A 5 8 8 9F. "\$\$\$\$ \$: @G<: C @B C J 9F "\$\$\$\$ \$ B 7 7 9@	8C "BCH G7 5 @9 8 F 5 K B: G 99 H G 7 5 @9. %. 89G7 F @HC B. "\$ \$ \$ A I @ # F C K ' GC 7 ? 9 H 5 CGA 96 @M 8K: "BC" 5GD!%\$' *%&! \$& 6M K < 9@B \$ - # / & # \$ * G < 99 H % C : &



5GD!%\$' \*%&! \$&

