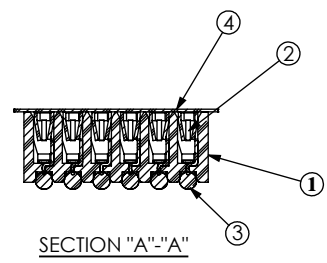
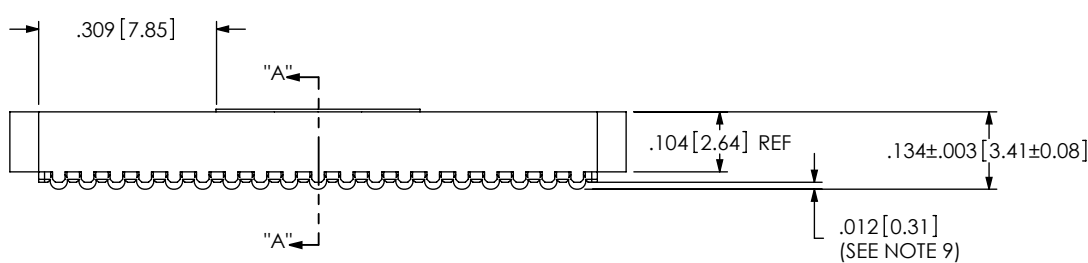
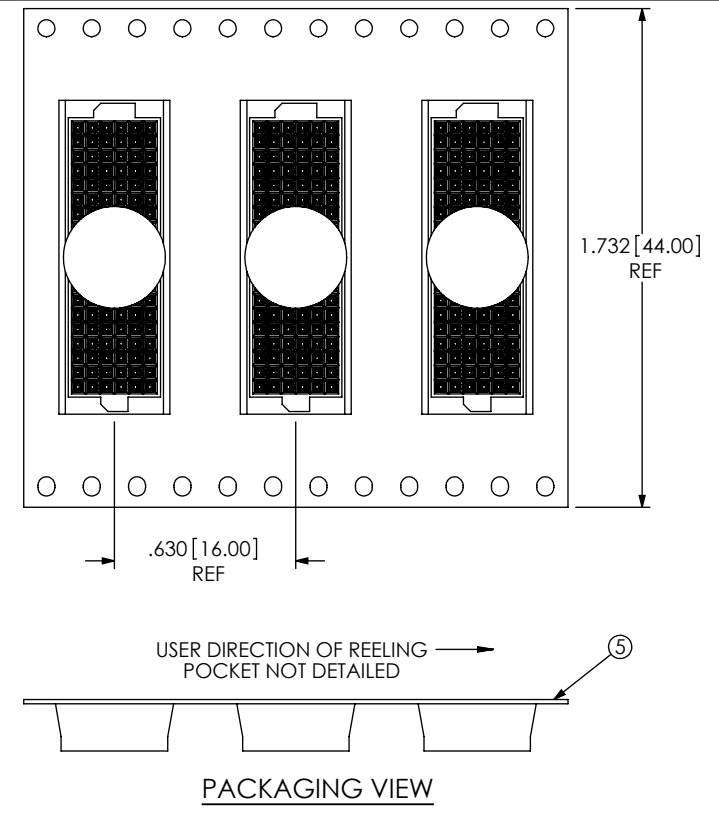
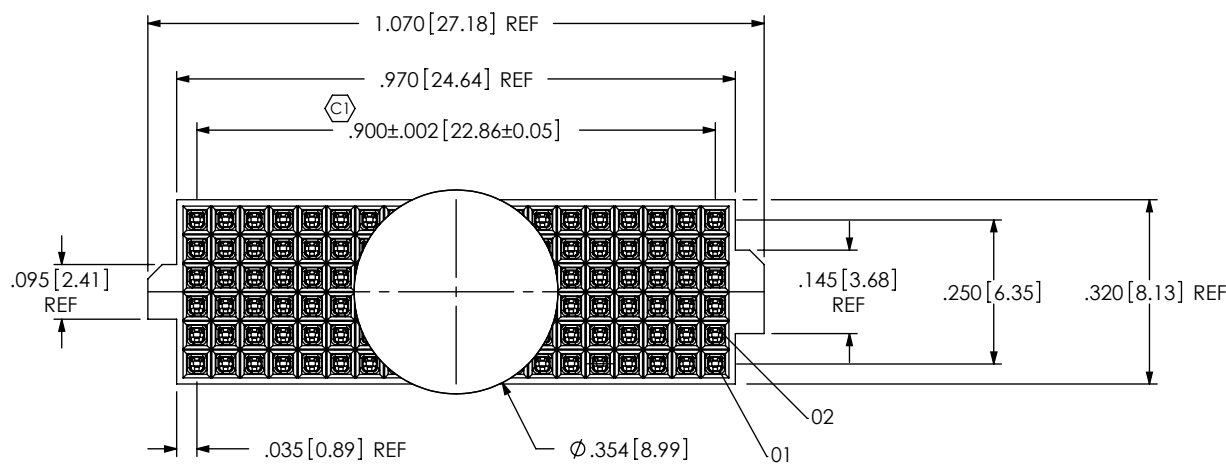
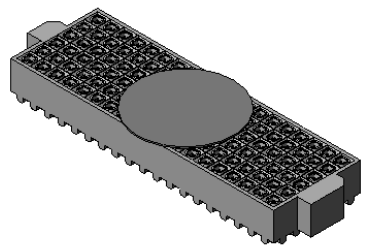


- NOTES:
1. USE ASP-103597-01-B BODY FOR NON-STANDARD 19 POSITION.
 2. Ⓞ REPRESENTS A CRITICAL DIMENSION.
 3. BURR ALLOWANCE: .0005[.013] MAX.
 4. MINIMUM PUSHOUT FORCE: .5 LB.
 5. MAXIMUM ALLOWABLE BOW: .002[.05] INCH/INCH AFTER ASSEMBLY.
 6. CONTACT TO BE FLUSH TO .003[.08] RECESSED.
 7. ONE REEL MINIMUM PLATING REQUIREMENT (85,000 CONTACTS PER REEL).
 8. ALL DIMS TO BE SYMMETRICAL ABOUT THE CENTERLINE WITHIN ±.001[.03].
 9. .0025[.064] MAX VARIATION BETWEEN SOLDERBALLS.
 10. REFER TO VISUAL INSPECTION BOARD FOR SOLDERBALL APPEARANCE CHECKS.
 11. THE DISTANCE FROM THE CENTER OF ANY SOLDERBALL TO THE CENTER OF ANY ADJACENT INNER PEG SHALL BE .025±.005[.64±.13].
 12. PARTS TO BE PACKAGED IN TAPE & REEL.

ANY REV. MADE TO THIS PRINT MUST HAVE A UPDATED MKTG. PRINT

REVISION		
A	JL	E MESSER
2/5/2003	ECN-23665	
RELEASE FOR PRODUCTION		
B	TB	R CRUSE
10/2/2003	ECN-29200	
ADD SHEET 2 (RECOMMENDED BOARD LAYOUT AND DETAIL "A")		
C	TB	R CRUSE
1/28/2004	ECN-32346	
CORRECT FOOTPRINT VIEW (SHEET 2) FROM 18 POS TO 19 POS		
D	JC	R CRUSE
2/2/2005	ECN-43112	
SHEET 2: PCB LAYOUT: ADD ROW AND COLUMN LABELING		
E	JB	S MANGELS
10/5/2007	ECN-81208	
SHEET 2: FOOTPRINT: MOVE POS NOTE '01', DEL POS NOTE '19', ADD POS NOTE '06'		



ITEM NO.	PART NUMBER	QUANTITY	MATERIAL
1	ASP-103597-01-B	1.00000	VECTRA E130i, COLOR: BLACK
2	C-140-03-H	114.00000	PHOS BRONZE, 521 HARD TEMPER
3	SDB-030-6337	114.00000	63% TIN /37% LEAD
4	K-850-650	1.00000	POLYAMIDE FILM (KAPTON)
5	CT-ASP1132MS	1.00000	CONDUCTIVE POLYMER

UNLESS OTHERWISE SPECIFIED, DIMENSIONS ARE IN INCHES. TOLERANCES ARE:
 DECIMALS ANGLES
 .XX: ±.01 2°
 .XXX: ±.005
 .XXXX: ±.0020

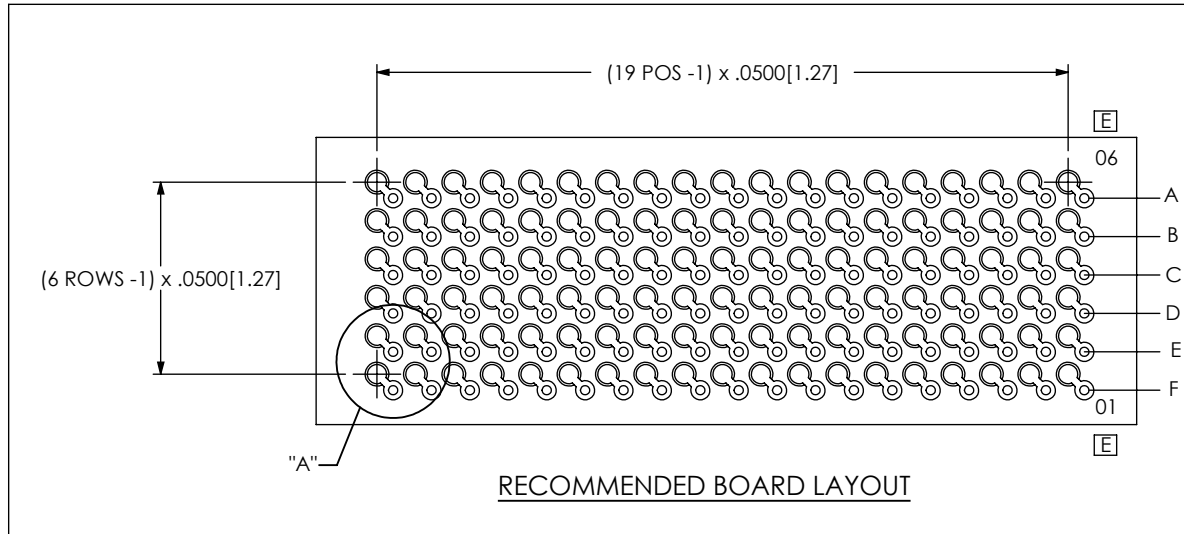
PROPRIETARY NOTE
 THIS DOCUMENT CONTAINS INFORMATION CONFIDENTIAL AND PROPRIETARY TO SAMTEC, INC. AND SHALL NOT BE REPRODUCED OR TRANSFERRED TO OTHER DOCUMENTS OR DISCLOSED TO OTHERS OR USED FOR ANY PURPOSE OTHER THAN THAT WHICH IT WAS OBTAINED WITHOUT THE EXPRESSED WRITTEN CONSENT OF SAMTEC, INC.



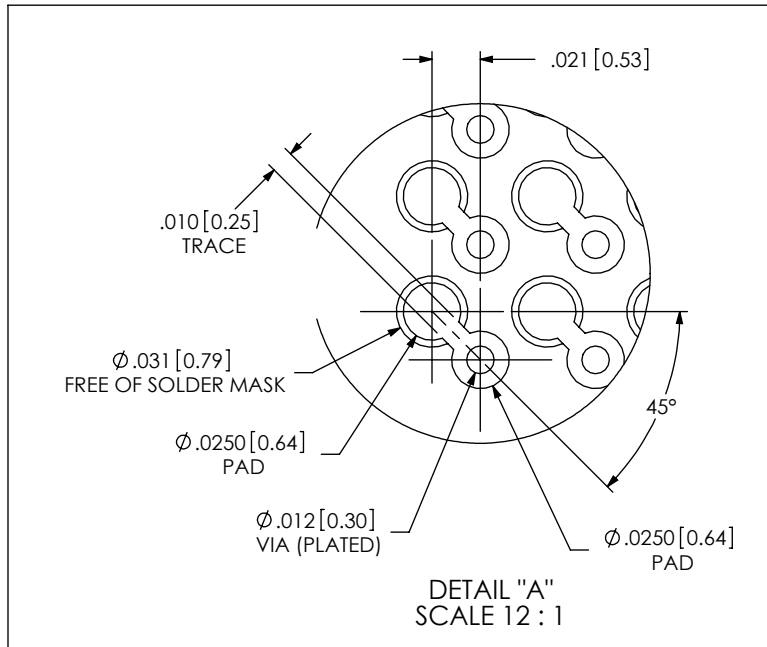
520 PARK EAST BLVD, NEW ALBANY, IN 47150
 PHONE: 812-944-6733 FAX: 812-948-5047
 e-Mail: info@SAMTEC.com code: 55322


DO NOT SCALE DRAWING SHEET SCALE: 3:1
 PLATING:
 CONTACT AREA: .000030 GOLD OVER .000050 NICKEL
 REMAINDER: .000003 FLASH GOLD OVER .000050 NICKEL

DESCRIPTION: .050 MULTI-ROW SOCKET ASSMEBLY
 DWG. NO. **ASP-103612-01**
 BY: BRYANT 10/22/2002 SHEET 1 OF 2



NOTE:
OUTER ROWS MAY NOT NEED VIAS - THIS IS LEFT TO
THE DISCRETION OF THE BOARD DESIGNER.



<p>PROPRIETARY NOTE THIS DOCUMENT CONTAINS INFORMATION CONFIDENTIAL AND PROPRIETARY TO SAMTEC, INC. AND SHALL NOT BE REPRODUCED OR TRANSFERRED TO OTHER DOCUMENTS OR DISCLOSED TO OTHERS OR USED FOR ANY PURPOSE OTHER THAN THAT WHICH IT WAS OBTAINED WITHOUT THE EXPRESSED WRITTEN CONSENT OF SAMTEC, INC.</p>	 520 PARK EAST BLVD, NEW ALBANY, IN 47150 PHONE: 812-944-6733 FAX: 812-948-5047 e-Mail: info@SAMTEC.com code: 55322	
	SHEET SCALE: 3:1	DESCRIPTION: .050 MULTI-ROW SOCKET ASSMEBLY
		DWG. NO. ASP-103612-01
BY: BRYANT 10/22/2002		SHEET 2 OF 2