

High Pressure Regulator for Outlet Pressure up to 200 bar

RH11

Description

Hand-operated, spring-loaded high pressure regulator for maximum supply pressure of 220 bar and maximum outlet pressure of 200 bar. For outlet pressures up to 15 bar the regulator has a diaphragm, for higher outlets a piston. A sintered bronze filter at the inlet port protects against contamination, compressed air or non-corrosive gases

Media

Supply pressure

max. 200 bar

Adjustment

RH11-02: by black plastic knob

RH11-03 to -10: by T-handle with locknut

Gauge port

All regulators are equipped with both one supply pressure gauge and one outlet pressure gauge.

Safety relief valve

prevents from overpressure, see chart

Compensation

All regulators are equipped with supply pressure variation compensation, so that a change in supply pressure has no effect on the outlet pressure's stability.

Temperature range

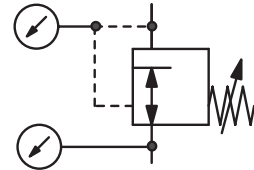
-20 °C to 60 °C / -4 °F to 140 °F

Mounting position

any

Material

Body: brass, nickel-plated at RH11-02
 Inlet filter: sintered bronze
 Piston: stainless steel, brass at RH11-02
 O-rings: EPDM
 Valve seat: nylon
 Diaphragm: stainless steel at RH11-02, NBR/Buna-N at all others



G $\frac{1}{4}$ up to G $\frac{1}{4}$
 1 ... 8/200 bar

Dimensions			Safety relief valve	K _v value	Flow rate	Connection thread	Pressure range	Order number
A	B	C	S: with valve	(m ³ /h)	m ³ /h*1	l/min*1	bar	
mm	mm	mm				in / out		

High pressure regulator 200 bar

non-relieving, for compressed air, pressure gauges supplied

RH11

175	150	32	S	0.05	30	500	DIN 477 / G $\frac{1}{4}$	1 ... 8	RH11-02A
			S		45	750		1 ... 15	RH11-02B
			S		60	1000		3 ... 30	RH11-02C
			S		60	1000		5 ... 50	RH11-02D
			S		60	1000		10 ... 100	RH11-02E
			-		60	1000		20 ... 200	RH11-02F
181	165	40	S	0.15	70	1150	DIN 477 / G $\frac{1}{2}$ m	1 ... 8	RH11-03A
			S		155	2580		1 ... 15	RH11-03B
			S		210	3500	DIN 477 / G $\frac{3}{8}$	3 ... 30	RH11-03C
181	180	40	S		300	5000		5 ... 50	RH11-03D
			-		390	6500		20 ... 200	RH11-03F
181	230	40	S	0.25	370	6170	DIN 477 / G $\frac{1}{2}$ m	1 ... 15	RH11-A3B
			S		550	9170	DIN 477 / G $\frac{3}{8}$	3 ... 30	RH11-A3C
			S		650	10830		5 ... 50	RH11-A3D
181	180	40	-		700	11670		20 ... 200	RH11-A3F
171	355	232	S	1.5	600	10000	G $\frac{3}{4}$ m / G $\frac{3}{4}$ m	1 ... 8	RH11-06A
			S		720	12000		1 ... 15	RH11-06B
171	380	257	S		850	14170		3 ... 30	RH11-06C
			S		1000	16670		5 ... 50	RH11-06D
246	376	245	S	2.5	1100	18330	G1m / G1m	1 ... 8	RH11-08A
			S		1300	21670		1 ... 15	RH11-08B
246	412	281	S		1500	25000		3 ... 30	RH11-08C
			S		1650	27500		5 ... 50	RH11-08D
			-		1850	30830		20 ... 200	RH11-08F
241	380	264	S	3.5	2700	45000	G1m / G $\frac{1}{4}$	1 ... 8	RH11-10A
			S		3150	52500		1 ... 15	RH11-10B
241	418	299	S		3500	58330		5 ... 50	RH11-10D



RH11-02B



RH11-A3B



RH11-08B

Special options, add the appropriate letter

relieving diaphragm

RH11-. .R

relieving piston

RH11-. .R

FKM elastomer

RH11-. .V

PTFE elastomer

RH11-. .T

SST diaphragm

from RH11-03 on

RH11-. .S

for panel mounting

for RH11-02 to -A3

RH11-. .P

nitrogen N₂: 07

carbon dioxide CO₂: 03*2

argon Ar:

RH11-. .05

helium He: 09

hydrogen H₂: 11

methane CH₄:

RH11-. .13

oxygen O₂: 15

propane C₃H₈: 16

nitrous oxide N₂O:

RH11-. .17

Accessories, enclosed

mounting bracket made of stainless steel

for RH11-02 to -A3

BW30-03S

mounting nut

for RH11-02 to -A3

M30x1,5S

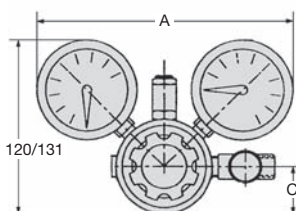
mounting bracket

for RH11-06

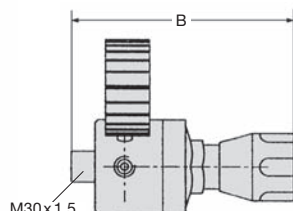
BW00-31

for RH11-08

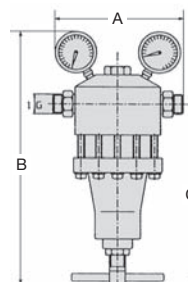
BW00-35



RH11-02/-03/-A3

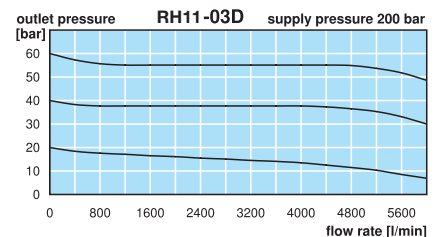


RH11-06/-08



*1 at 200 bar supply pressure and max. outlet pressure

*2 max. 80 bar



Order example:
RH11-02A

China website: www.duray-control.cn