

# Plastic Pressure Regulator

## R135... R195

### Description

Modular regulator easy to interlock with other regulators, filters or filter regulators of the same series, without the need for double nipples or any other fittings. A sensitive rolling diaphragm allows good pressure regulation.

### Media

compressed air, non-corrosive gases or liquids

### Supply pressure

max. 15 bar, max. 10 bar for R135

### Adjustment

by plastic knob with snap-lock, R135 without snap-lock

### Relieving function

relieving, optionally non-relieving

### Gauge port

G $\frac{1}{8}$  on both sides of the body (G $\frac{1}{4}$  at R195), one screw plug supplied

### Mounting position

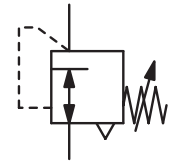
any

### Temperature range

0 °C to 50 °C / 32 °F to 177 °F

### Material

Body: nylon, POM at R135 and R142  
Elastomer: NBR/Buna-N  
Inner valve: brass  
Thread insert: brass



G $\frac{1}{8}$  up to G1

Standard



Dimensions			K <sub>v</sub> value (m <sup>3</sup> /h)	Flow rate		Connection thread G	Pressure range bar	Order number
A mm	B mm	C mm		m <sup>3</sup> /h*1	l/min*1			

### Pressure regulator

supply pressure max. 15 bar, series R135 max. 10 bar, relieving, without pressure gauge

R1

36	61	12	0.11	15	250	G $\frac{1}{8}$	0... 6	R135-01B
for battery assembly, without clips								
42	92	20	0.36	51	850	G $\frac{1}{4}$	0... 4 0... 8 0... 12	R142-02B R142-02C R142-02D
63	129	38	0.59	84	1400	G $\frac{3}{8}$	0... 4 0... 8 0... 12	R150-03B R150-03C R150-03D
63	129	38	0.63	90	1500	G $\frac{1}{2}$	0... 4 0... 8 0... 12	R152-04B R152-04C R152-04D
63	145	42	1.0	138	2300	G $\frac{1}{2}$	0... 4 0... 8 0... 12	R175-04B R175-04C R175-04D
137	145	42	1.0	144	2400	G $\frac{3}{4}$	0... 4 0... 8 0... 12	R180-06B R180-06C R180-06D
115	222	48	6.3	900	15000	G1	0... 4 0... 8 0... 12	R195-08B R195-08C R195-08D

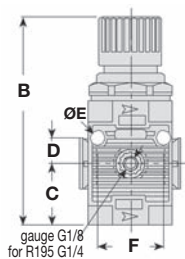


### Special options, add the appropriate letter

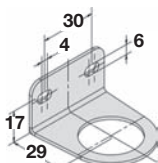
non-relieving also for liquids R1...0...K

### Accessories, enclosed

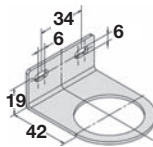
pressure gauge	Ø 23 mm, 0... <sup>*2</sup> bar, G $\frac{1}{8}$ , max. 12 bar Ø 40 mm, 0... <sup>*2</sup> bar, G $\frac{1}{8}$ Ø 50 mm, 0... <sup>*2</sup> bar, G $\frac{1}{8}$ Ø 63 mm, 0... <sup>*2</sup> bar, G $\frac{1}{4}$	for R135 for R142 for R150 to R180 for R195	MA2301-... <sup>*2</sup> MA4001-... <sup>*2</sup> MA5001-... <sup>*2</sup> MA6302-... <sup>*2</sup>
mounting bracket	made of steel, mounting nut at the device	for R142 for R150 to R180 for R195	BW30-01 BW42-01 BW00-02
set of brackets	made of steel	for R135	C350100018
connection clips		for R135	



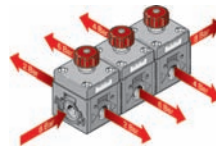
R135...R195



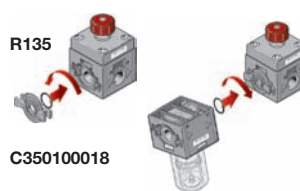
BW30-01



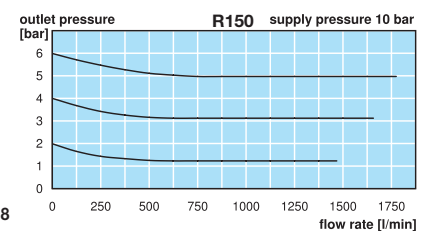
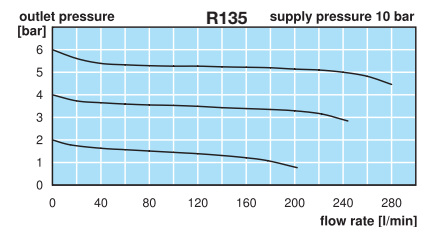
BW42-01



R135-01RB battery assembly



R135 assembly with connecting clips C350100018



\*1 at 10 bar supply pressure, 6 bar outlet pressure and 1 bar pressure drop  
\*2 04 = 0...4 bar, 06 = 0...6 bar, 10 = 0...10 bar, 16 = 0...16 bar



Order example:  
R135-01B

China website: www.duray-control.cn