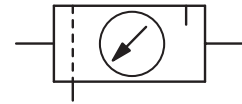


| | | | |
|----------------------------|---|---|--|
| Description | Made up of modular components which can be combined to form compact units. Switch-on and soft start valves available as additional modules. | | |
| Media | compressed air or non-corrosive gases | | |
| Supply pressure | max. 15 bar, | max. 7 bar at lubricator with oil level indicator | |
| Gauge port | G $\frac{1}{2}$ or G $\frac{1}{4}$ at series 095, on both sides of the body, one screw plug supplied | | |
| Filter element | 20 μ m, optionally 5 μ m, made of sintered polyethylene | | |
| Bowl | plastic version with bayonet catch, series 042 with connection thread | | |
| Drain | manual drain with semiautomatic drain, optionally automatic drain | | |
| Oil refilling | optionally with semiautomatic oil refilling without need to interrupt operation | | |
| Oil level indicator | If the oil level falls below the limit value, a float will close a signal contact. | | |
| Temperature range | 0 °C to 50 °C / 32 °F to 122 °F | | |
| Material | Body: nylon, POM at series 042 | Inner valve: brass | |
| | Bowl: polyamide | Thread insert: brass | |
| | Elastomer: NBR/Buna-N | | |



G $\frac{1}{4}$ up to G1

| Dimensions | | | Combination consisting of | Bowl design made of / with | Flow rate m ³ /h*1 | l/min*1 | Connection thread G | Order number |
|------------|---|---|---------------------------|----------------------------|-------------------------------|---------|---------------------|--------------|
| A | B | C | | | | | | |

FRL unit, 2-part

P_i: max. 15 bar, P_e: 0...8 bar, 20 μ m, semiautomatic drain, with pressure gauge

C2

| | | | | | | | | |
|-----|-----|-----|--------|------------|-----|-------|-----------------|------------------|
| 84 | 198 | 126 | B+L042 | plastic | 48 | 800 | G $\frac{1}{4}$ | C242-02HC |
| 126 | 239 | 148 | B+L050 | plastic/ | 78 | 1300 | G $\frac{3}{8}$ | C250-03HC |
| 126 | 239 | 148 | B+L052 | bowl guard | 84 | 1400 | G $\frac{1}{2}$ | C252-04HC |
| 151 | 276 | 173 | B+L075 | | 132 | 2200 | G $\frac{1}{2}$ | C275-04HC |
| 226 | 276 | 173 | B+L080 | | 138 | 2300 | G $\frac{3}{4}$ | C280-06HC |
| 225 | 411 | 237 | B+L095 | | 672 | 11200 | G1 | C295-08HC |

FRL unit, 3-part

P_i: max. 15 bar, P_e: 0...8 bar, 20 μ m, semiautomatic drain, with pressure gauge

C3

| | | | | | | | | |
|-----|-----|-----|----------|------------|-----|-------|-----------------|------------------|
| 126 | 198 | 126 | F+R+L042 | plastic | 48 | 800 | G $\frac{1}{4}$ | C342-02HC |
| 188 | 239 | 148 | F+R+L050 | plastic/ | 78 | 1300 | G $\frac{3}{8}$ | C350-03HC |
| 188 | 239 | 148 | F+R+L052 | bowl guard | 84 | 1400 | G $\frac{1}{2}$ | C352-04HC |
| 226 | 276 | 173 | F+R+L075 | | 132 | 2200 | G $\frac{1}{2}$ | C375-04HC |
| 290 | 276 | 173 | F+R+L080 | | 138 | 2300 | G $\frac{3}{4}$ | C380-06HC |
| 335 | 411 | 237 | F+R+L095 | | 672 | 11200 | G1 | C395-08HC |

Special options, add the appropriate letter

| | | | | |
|-----------------------------|-------------------------|------------|------------------|--------------|
| 5 μ m filter element | | | for C.42 to C.80 | C...-0..G. |
| | | | for C.95 | C..95-0..G. |
| 0...12 bar pressure range | | | for C.42 to C.80 | C...-0..D |
| | | | for C.95 | C..95-0..D |
| automatic drain | C400200130 | | for all devices | C...-0...R |
| semiautomatic oil refilling | P _{min.} 3 bar | | for C.42 to C.80 | C...-0...X65 |
| oil level indicator | P _{max.} 7 bar | 115 V / NO | for all devices | C...-0...X66 |

Accessories, enclosed

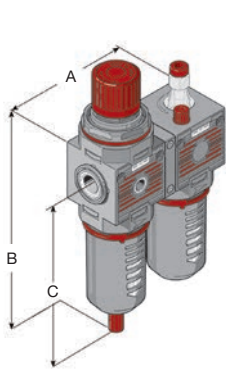
| | | | |
|----------------------|---|------------------|----------------|
| mounting bracket | made of steel, mounting nut at the device | for C.42 | BW30-01 |
| | | for C.50 to C.80 | BW42-01 |
| mounting bracket set | made of steel, mounting nut at the device | for C.95 | BW00-02 |



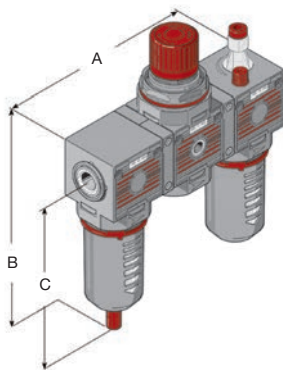
C242
with plastic bowl



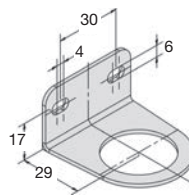
C375
with bowl guard



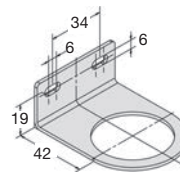
C2



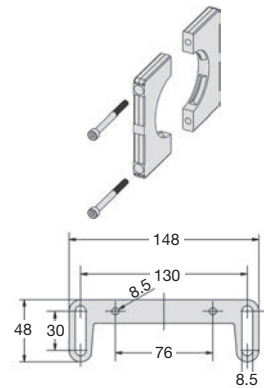
C3



BW30-01



BW42-01



BW00-02

*1 at 10 bar supply pressure, 6 bar outlet pressure and 1 bar pressure drop
*2 04 = 0...4 bar, 10 = 0...10 bar, 16 = 0...16 bar



Order example:
C242-02HC

China website: www.duray-control.cn

FRL
units

