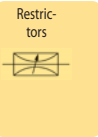
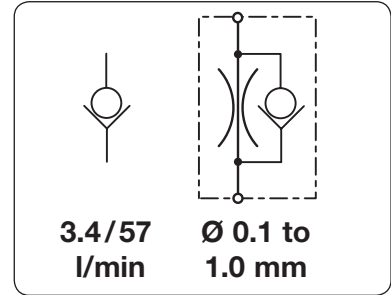


# Check Valve and Restrictor Check Valve

# F2804

<b>Check valve</b>	The check valve permits flow in one direction only. A small check disc within the housing ensures free flow in one direction and at the same time seals off on the other side.
<b>Restrictor check valve</b>	The restrictor check valve provides a constant flow in one direction, defined through the orifice size, and a flow of the full nominal size towards the other direction.
<b>Media</b>	5 µm filtered compressed air or non-corrosive gases
<b>Diameter tolerance</b>	-3% to +10% of nominal diameter
<b>Operating pressure</b>	max. 0.7 bar at F2804-400/1/2/3, max. 5.2 bar at F2804-404
<b>Cracking pressure</b>	< 20 mbar at F2804-400/1/2/3, < 25 mbar at F2804-404
<b>Temperature range</b>	5 °C to 50 °C / 41 °F to 122 °F
<b>Material</b>	Body: polysulphone at F2804-400/1/2/3, polypropylene at F2804-404 Check disc: Celcon at F2804-401/2, silicone at F2804-400/3/4

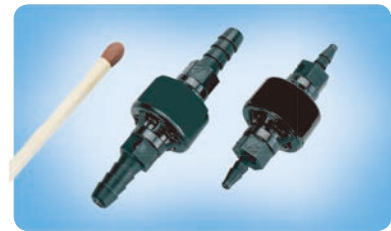


Dimension A	Operating pressure	Check disk	Connection	Leakage rate	Flow rate	Nominal size	Order number
mm	max. bar	made of		< ml/min*3	l/min*2	colour / DN	

Check valve		operating pressure max. 0.7 / 5.2 bar			F2804			
12	0.7	silicone	plain fittings Ø 2.4	3	3.4	red	1.5	F2804-400*1
		Celcon		51		orange	1.5	F2804-401
		Celcon		17		green	1.5	F2804-402
		silicone		3		blue	1.5	F2804-403
26	0.7	Celcon	fittings Ø 2.7	51		grey	1.5	F2804-401-B80
		Celcon		17		grey	1.5	F2804-402-B80
		silicone		3		grey	1.5	F2804-403-B80*1
30	0.7	Celcon	fittings Ø 4.7	51		grey	1.5	F2804-401-B85
		Celcon		17		grey	1.5	F2804-402-B85
		silicone		3		grey	1.5	F2804-403-B85*1
15	5.2	silicone	10-32"	1	57	grey	3.8	F2804-404*1
		silicone	fittings Ø 2.7	1		grey	3.8	F2804-404-B80
		silicone	fittings Ø 4.7	1		grey	3.8	F2804-404-B85



F2804-400/1/2/3 check valve



F2804-404 - B85/... -B80 check valve



F2804-404 - 071 / -301 restrictor check valve

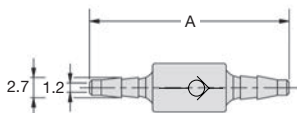
Restrictor check valve		operating pressure max. 5.2 bar			F2804			
15	5.2	silicone	10-32"				0.10	F2804-404-041*1
							0.13	F2804-404-050
							0.15	F2804-404-051
							0.18	F2804-404-071
							0.25	F2804-404-101*1
							0.30	F2804-404-121
							0.41	F2804-404-161
							0.51	F2804-404-201
							0.64	F2804-404-251*1
							0.76	F2804-404-301
	1.02	F2804-404-401*1						

## Special options, add the appropriate letter

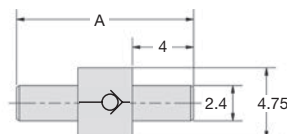
increased cracking pressure for check valve, with spring	35 mbar:	05	140 mbar	F2804-404-2
	280 mbar:	4	350 mbar	F2804-404-5

## Accessories, enclosed

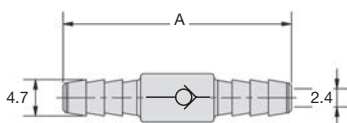
connecting nipple for F2804-404	10-32" / fitting Ø 2.7	F3120-80
	Ø 4.7	F3120-85
	Ø 5.6	F3120-86



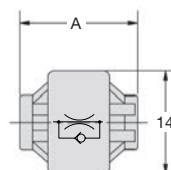
F2804-40.-B80



F2804-40.- with plain fittings



F2804-40.-B85



F2804-404

fitting	for tube		
B80	Ø2.7	1/16"	Ø 1.6 mm
B85	Ø4.7	1/8"	Ø 3.2 mm
B86	Ø5.6	0,17"	Ø 4.3 mm

\*1 preferred stock items \*2 at max. operating pressure \*3 at Δp or P<sub>1</sub> = 70 mbar, at type F2804-404: P<sub>1</sub> = 5.2 bar



Order example:  
F2804-400

China website: www.duray-control.cn